

A novel portable upper gastrointestinal endoscopy system with complete functions of both diagnosis and treatment



Gastrointestinal (GI) disease has a high incidence in clinical practice, especially in remote areas [1] and during natural disasters. However, it is difficult to perform conventional GI endoscopy outdoors as it requires a large area, hydroelectric power, and a complex cleaning and disinfection process [2]. To overcome the above limitations, we developed a novel portable upper GI endoscopy system that is capable of performing the same functions as a conventional endoscopy system and can be packed into a suitcase.

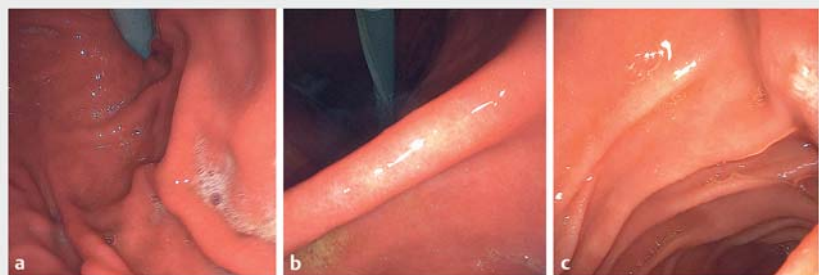
The system consists of six parts: endoscope, water and air pump, suction, power, monitor, and storage box (Ankon Technologies Co., Ltd., Wuhan, China). The system has two statuses: transportation and working. During the transportation status, the overall size of the box is 68×42×32 cm and it weighs less than 35 kg (► Fig. 1 a). When in working status, the probe of the endoscope is covered by a disposable sheathed system (► Fig. 1 b). The film covering the endoscope body, and the suction button, air-water pipe, and suction-biopsy channel are all single use [3]. After charging, the portable system is capable of running for more than 4 hours.

The doctors prepared the portable endoscopy system in working status and placed the disposable sheathed system on the endoscope. In a volunteer, the endoscope could clearly observe the gastric fundus (► Fig. 2 a) and angular incisure (► Fig. 2 b) under retroflexed view, and pass into the descending part of the duodenum (► Fig. 2 c). After examination, the endoscopist replaces the disposable sheathed system with a new one before the next case (► Video 1).

Only one portable GI endoscopy system currently exists (E.G. Scan; IntroMedic Co., Ltd., Seoul, Korea), but this is diagnostic only without any treatment function [4]. Our system has both diagnostic and treatment capabilities. Besides the portability of this system, another ad-



► Fig. 1 The portable endoscopy system. **a** In transportation status. **b** In working status, covered by a disposable sheathed system.



► Fig. 2 Endoscopic views of the portable endoscopy system. **a** The gastric fundus in the retroflexed view. **b** The angular incisure in the retroflexed view. **c** The descending part of the duodenum and papilla in the forward view.

vantage is that there is no need for routine cleaning and disinfection. It takes less than 5 minutes to apply and remove the disposable sheathed system. There-

fore, this system has potential applications in remote areas and during natural disasters when facilities are lacking. Further studies using this system in humans



The portable endoscopy system in transportation status

Video 1 The installation process and instructions for use of the portable endoscopy system.

are required to assess its performance and safety.

Endoscopy_UCTN_Code_CCL_1AB_2AC_3AH


Funding

Projects of Logistical Support
Department, China
AWS15J003,
2020-JSCGPZ-01,
21QNPY037,
2021-JCJQ-ZQ-005

Competing Interest

The authors declare that they have no conflict of interest.

The authors

Wen-Bin Zou¹, Ting Zhang¹, Chen He¹, Xiao-Dong Duan², Cui Liu¹, Zhao-Shen Li¹, Zhuan Liao¹ 

- 1 Department of Gastroenterology, Digestive Endoscopy Center, Changhai Hospital, Naval Medical University, Shanghai, China
- 2 Ankon Medical Technologies Co., Ltd., Shanghai, China

Corresponding author

Zhuan Liao, MD

Department of Gastroenterology, Digestive Endoscopy Center, Changhai Hospital, The Naval Medical University, 168 Changhai Road, Shanghai 200433, China
zhuanleo@126.com

References

- [1] Deng R, Labasangzhu, Zhaxideji et al. Illness prevalence rate in Tibet, China: data from the 2018 National Health Service Survey. *BMC Public Health*; 2020; 20: 955
- [2] Valori R, Cortas G, de Lange T et al. Performance measures for endoscopy services: a European Society of Gastrointestinal Endoscopy (ESGE) Quality Improvement Initiative. *Endoscopy* 2018; 50: 1186–1204
- [3] Jin P, Wang X, Yu DL et al. Safety and efficacy of a novel disposable sheathed gastroscopic system in clinical practice. *J Gastroenterol Hepatol* 2014; 29: 757–761
- [4] Choi JH, Choi JH, Lee YJ et al. Comparison of a novel bedside portable endoscopy device with nasogastric aspiration for identifying upper gastrointestinal bleeding. *World J Gastroenterol* 2014; 20: 8221–8228

Bibliography

Endoscopy 2023; 55: E9–E10
DOI 10.1055/a-1919-4443
ISSN 0013-726X
published online 9.9.2022
© 2022. The Author(s).

This is an open access article published by Thieme under the terms of the Creative Commons Attribution-NonDerivative-NonCommercial License, permitting copying and reproduction so long as the original work is given appropriate credit. Contents may not be used for commercial purposes, or adapted, remixed, transformed or built upon. (<https://creativecommons.org/licenses/by-nc-nd/4.0/>)

Georg Thieme Verlag KG, Rüdigerstraße 14,
70469 Stuttgart, Germany



ENDOSCOPY E-VIDEOS

<https://eref.thieme.de/e-videos>



Endoscopy E-Videos is an open access online section, reporting on interesting cases and new techniques in gastroenterological endoscopy. All papers include a high quality video and all contributions are freely accessible online. Processing charges apply (currently EUR 375), discounts and waivers acc. to HINARI are available.

This section has its own submission website at
<https://mc.manuscriptcentral.com/e-videos>

* These authors contributed equally to this work.