

# Effects of Plasmin on von Willebrand Factor and Platelets: A Narrative Review

Lisa N. van der Vorm<sup>1,2,3</sup> Jasper A. Remijn<sup>2,3</sup> Bas de Laat<sup>1,2,3</sup> Dana Huskens<sup>1,2</sup>

<sup>1</sup>Synapse Research Institute, Maastricht, The Netherlands

<sup>2</sup>Cardiovascular Research Institute Maastricht, Maastricht University Medical Centre, Maastricht, The Netherlands

<sup>3</sup>Department of Clinical Chemistry and Hematology, Gelre Hospitals, Apeldoorn, The Netherlands

Address for correspondence Dana Huskens, PhD, Synapse Research Institute, Oxfordlaan 70, 6229 EV, Maastricht, The Netherlands (e-mail: d.huskens@thrombin.com).

TH Open 2018;2:e218–e228.

## Abstract

Plasmin is the major fibrinolytic protease responsible for dissolving thrombi by cleavage of its primary substrate fibrin. In addition, emerging evidence points to other roles of plasmin: (1) as a back-up for ADAMTS13 in proteolysis of ultra-large von Willebrand factor (VWF) multimers and (2) as an activator of platelets. Although the molecular mechanisms of fibrinolysis are well defined, insights on the effects of plasmin on VWF and platelets are relatively scarce and sometimes conflicting. Hence, this review provides an overview of the literature on the effects of plasmin on VWF multimeric structures, on VWF binding to platelets, and on platelet activation. This information is placed in the context of possible applications of thrombolytic therapy for the condition thrombotic thrombocytopenic purpura.

## Keywords

- ▶ plasmin
- ▶ von Willebrand factor
- ▶ platelets

## Introduction

Plasmin is the key protease of the fibrinolytic system. During clot development, fibrin deposition elicits generation of plasmin from plasminogen, resulting in the dissolution of the fibrin clot.<sup>1</sup> Although many studies have focused on mechanisms of plasmin-mediated fibrin cleavage (reviewed by, among others, Cesarman-Maus and Hajjar<sup>2</sup>), there is a relative gap in knowledge on the effects of plasmin on other components that form the primary blood clot/thrombus. Recently, there has been increasing attention for a potential role of plasmin in the treatment of disorders associated with spontaneous von Willebrand factor (VWF)–platelet aggregation, such as thrombotic thrombocytopenic purpura (TTP).<sup>3,4</sup> This review provides an overview of the literature on the effects of plasmin on VWF and platelets. After a brief introduction into the structure and functions of plasmin, the evidence supporting a role for plasmin in degradation of VWF multimers and VWF–platelet complexes is presented. This is followed by a summary of existing literature on the effect of plasmin on

platelet activation through the platelet GP1b, GPIIb/IIIa, and thrombin receptors.

## Plasmin Function and Regulation

Plasmin is a potent serine-protease that is generated from its zymogen, plasminogen, usually at sites of vessel damage. Synthesized primarily in the liver,<sup>5</sup> plasminogen circulates in plasma at a concentration of approximately 1.5  $\mu\text{mol/L}$ , with a half-life of approximately 2 days.<sup>6</sup> Native, circulating Glu-plasminogen (92 kDa) is a single chain glycoprotein with a glutamic acid (Glu) as the N-terminal residue, containing an N-terminal activation peptide (NTP), five homologous triple-loop structures called kringle domains (K1–K5), and the serine protease domain containing the catalytic triad (**▶ Fig. 1**).<sup>7</sup> Physiological activation of plasminogen is mediated by tissue-type plasminogen activator (tPA) and urokinase-type plasminogen activator (uPA, urokinase).<sup>6</sup> tPA and uPA specifically cleave the single activation bond Arg561–Val562 of plasminogen, resulting in the formation of the two-chain enzyme plasmin composed of an N-

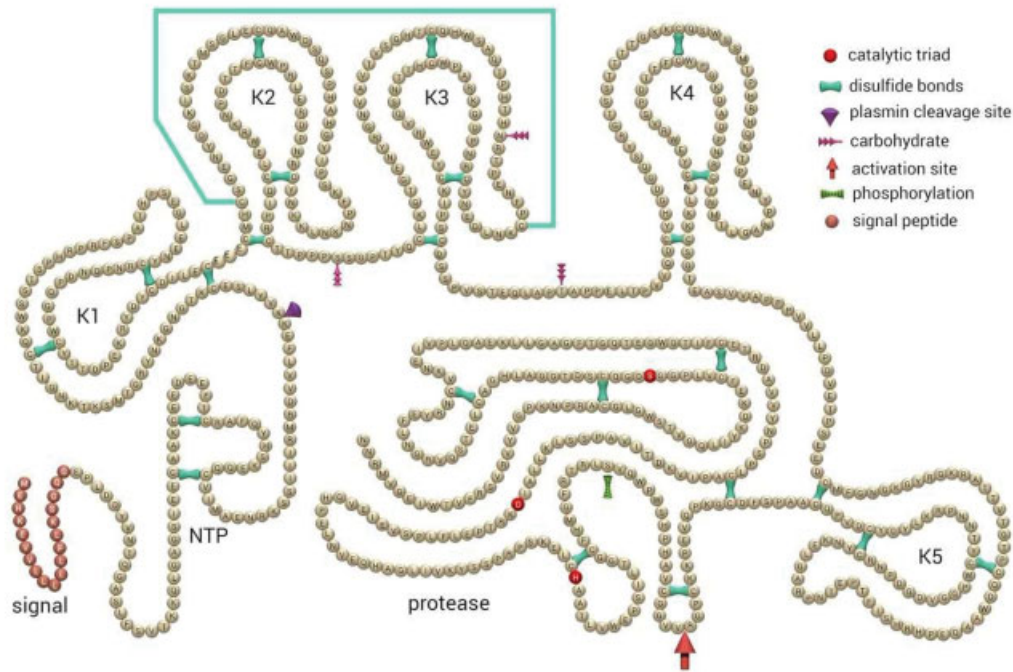
received  
February 28, 2018  
accepted after revision  
May 3, 2018

DOI <https://doi.org/10.1055/s-0038-1660505>  
ISSN 2512-9465.

© 2018 Georg Thieme Verlag KG  
Stuttgart · New York

License terms





**Fig. 1** Schematic representation of the primary structure of human plasminogen. The catalytic triad (His603, Asp646, and Ser741) within the protease domain, the activation site (Arg561–Val562), and the 24 disulfide bridges, as well as the signal peptide are indicated. NTP N-terminal peptide; K1–K5 kringles 1–5. (Adapted from Schaller and Gerber.<sup>100</sup>)

terminal heavy chain (12–65 kDa) and a C-terminal light chain (25 kDa).<sup>8</sup> Activation of plasminogen is inhibited by plasminogen activator inhibitors types 1 and 2 (PAI-1 and PAI-2).<sup>9,10</sup>

The primary substrate of plasmin is fibrin, which regulates its own degradation by binding both plasminogen<sup>11</sup> and tPA<sup>12</sup> on its surface, thereby localizing and enhancing plasmin generation. This binding of plasminogen to fibrin can be blocked by thrombin-activatable fibrinolysis inhibitor (TAFI).<sup>13</sup> Importantly, plasmin can also cleave both tPA and uPA, transforming them from single chain to more active two-chain polypeptides, thereby forming a positive-feedback loop (→ Fig. 2).<sup>2</sup> Plasmin is rapidly inhibited by its major inhibitor  $\alpha$ 2-antiplasmin ( $\alpha$ 2-AP), and to a lesser extent by  $\alpha$ 2-macroglobulin ( $\alpha$ 2M), unless it remains bound to fibrin or to its cell surface receptors (→ Fig. 2).<sup>14</sup>

Plasmin does not only cleave fibrin, it also possesses exceptionally broad specificity for target substrates, targeting among others coagulation factors V,<sup>15</sup> VIII,<sup>16</sup> IX,<sup>17</sup> X,<sup>18</sup> TFPI,<sup>19</sup> and fibrinogen;<sup>20</sup> as well as the VWF cleaving protease ADAMTS13 (a disintegrin and metalloproteinase with a thrombospondin type 1 motif, member 13)<sup>21</sup> (→ Table 1).

## Effect of Plasmin on von Willebrand Factor

### Structure and Regulation of von Willebrand Factor

VWF is a large plasma glycoprotein with essential functions in hemostasis. VWF circulates in plasma, at a concentration of approximately 10  $\mu$ g/mL,<sup>22</sup> in the form of multimers that comprise a varying number of VWF monomers (250–270

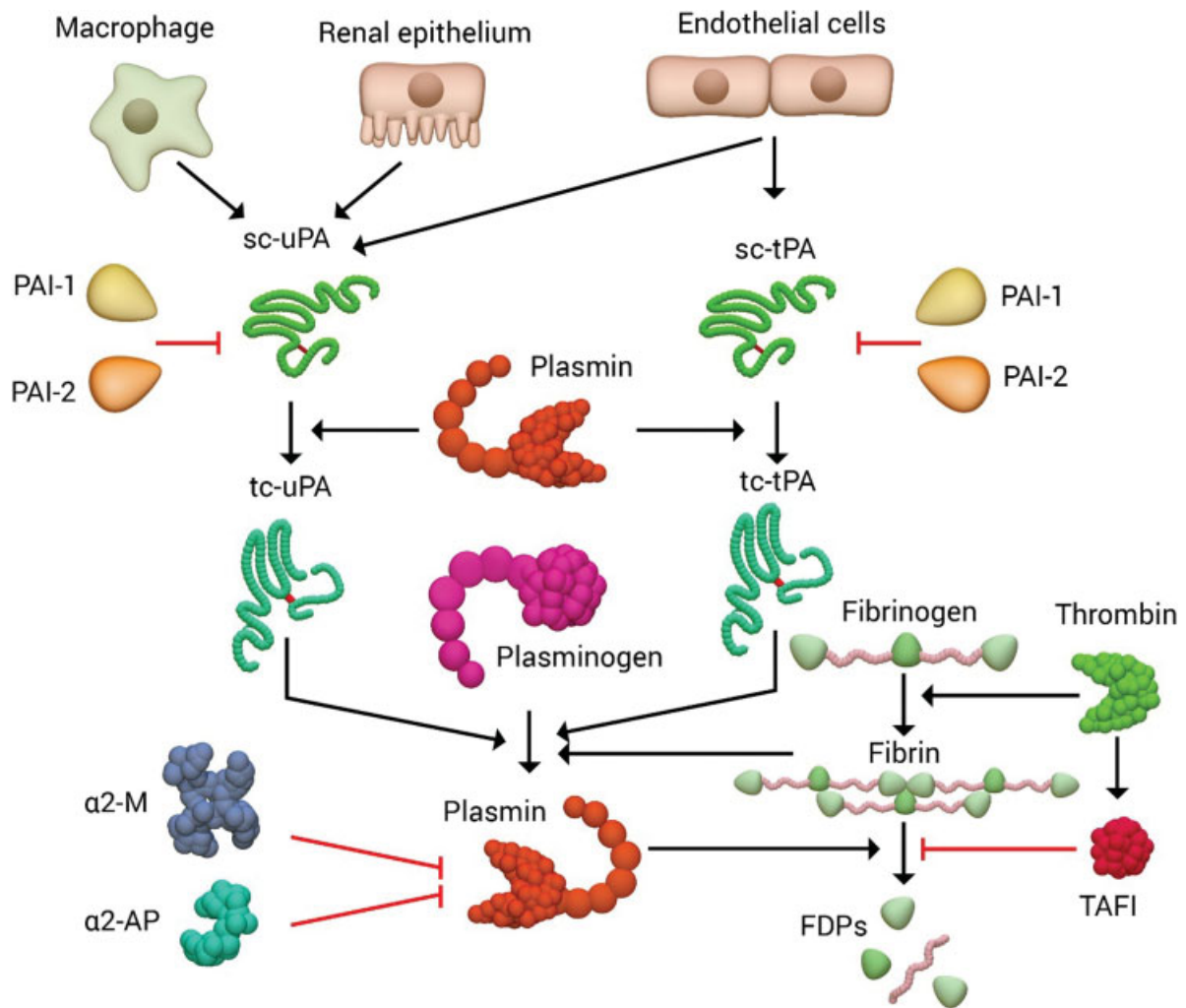
kDa).<sup>23</sup> Thus, the molecular weight of VWF multimers ranges from 500 to 20,000 kD, depending on the number of subunits.<sup>24</sup> Each VWF monomer possesses several domains, namely, the D'D3, A1, A2, A3, D4, C1 to C6, and CK domains.<sup>25</sup> Under normal blood flow conditions, VWF adopts a globular conformation<sup>26</sup> that can bind coagulation FVIII, prolonging its lifetime in the circulation.<sup>27,28</sup>

Vascular injury induces activation of endothelial cells<sup>29</sup> and platelets,<sup>30</sup> resulting in the release of hyperreactive ultra-large (UL) VWF multimers from Weibel-Palade bodies or  $\alpha$ -granules, respectively (→ Fig. 3A). These UL-VWF multimers are subjected to rapid proteolysis by ADAMTS13. The resulting ADAMTS13-cleaved VWF multimers are less thrombotic, but can still support normal hemostasis.<sup>31</sup> By inducing vasoconstriction, vascular injury also increases the hydrodynamic force, resulting in elongation of VWF multimers.<sup>32</sup> Unfolded VWF can bind to subendothelial collagen (via A1 and A3 domains)<sup>26</sup> and interact with platelets through GPIb $\alpha$ <sup>33</sup> (via VWF A1 domain<sup>34</sup>) which slows down the platelets through GPIIb/IIIa (via VWF C4 domain<sup>35</sup>) resulting in platelet activation, shape change, expression of activated integrins, and secretion of autocrine agents present on platelets.

### Plasmin: Candidate Protease for von Willebrand Factor

#### Rationale for Plasmin as Alternative for ADAMTS13

Deficiency in ADAMTS13 results in TTP, a disorder of thrombotic microangiopathy, characterized by an abnormal persistence of UL-VWF multimers.<sup>36</sup> Similar to the pathology in



**Fig. 2** Overview of fibrinolysis. Single-chain (sc) tPA and uPA are secreted from endothelial cells and from renal epithelium, monocytes/macrophages, or endothelial cells, respectively. Both tPA and uPA can be inhibited by plasminogen activator inhibitors (PAI-1 and PAI-2). Once plasmin is generated, it converts single-chain tPA and uPA to two-chain (tc) forms. Plasminogen is converted into the active protease plasmin primarily by tc-tPA (with fibrin as a cofactor) or tc-uPA. Plasmin cleaves fibrin to fibrin degradation products (FDPs), which can be inhibited by TAFI. Plasmin itself is inhibited by  $\alpha$ 2-antiplasmin ( $\alpha$ 2-AP) and  $\alpha$ 2-macroglobulin ( $\alpha$ 2-M).

systemic inflammation/sepsis, thrombotic microangiopathies such as TTP are associated with acute dysfunctional endothelial cell activation, indicated by up to fourfold increased VWF antigen (VWFAg) and VWF propeptide (VWFpp).<sup>37</sup>

Interestingly, TTP episodes occur sporadically in patients with hereditary ADAMTS13 deficiency,<sup>38</sup> while patients with acquired (autoantibody-mediated) ADAMTS13 deficiency can achieve clinical remission despite being severely depleted of ADAMTS13.<sup>39</sup> Hence, ADAMTS13 levels do not correlate with disease severity during the acute phase, suggesting the existence of regulatory mechanisms/factors other than ADAMTS13 that modulate the presentation of thrombotic microangiopathy.<sup>39,40</sup> However, during clinical remission, persistent ADAMTS13 deficiency is an established risk factor for clinical relapse.<sup>41,42</sup>

Plasmin is a candidate enzyme that may serve as an alternative, or back-up, for ADAMTS13 to cleave VWF multi-

mers.<sup>4</sup> The concentration of plasmin in the thrombus is above 10 nM and the environment of the thrombus protects it, at least partially, from inactivation by plasma inhibitors, most importantly  $\alpha$ 2-AP.<sup>43</sup> Early studies report cleavage by plasmin of the multimeric structure of VWF to lower molecular weight fragments,<sup>44</sup> mainly within disulfide loops,<sup>45</sup> resulting in loss of factor VIII<sup>46</sup> and VWF (ristocetin cofactor) activity.<sup>47</sup> An overview of reported effects of plasmin on VWF and the respective experimental concentrations used is given in ► **Table 2**.

#### Mechanisms of VWF Proteolysis by Plasmin

Plasmin, locally produced during fibrinolysis, can release VWF within minutes from native subendothelium. Thereby, proteolytic fragments are generated with potential activity in terms of platelet aggregation.<sup>48</sup> VWF is a relatively poor plasmin substrate compared with fibrinogen. In fact, VWF protects fibrinogen (but not fibrin) against degradation by

**Table 1** Plasmin substrates and corresponding cleavage sites: amino acid residue preceding cleavage site is given

Substrate	Plasmin cleavage site	Reference
Fibrin(ogen)	Arg104 (α chain) Arg42 (β-chain) Lys133 (β-chain) Lys62 (γ-chain) Lys85 (γ-chain)	Walker and Nesheim <sup>101</sup>
Glu-plasminogen	Lys62 Arg68 Lys77	Wiman <sup>102</sup> Wiman and Wallén <sup>103</sup> Violand and Castellino <sup>104</sup>
Factor V	Arg348 Lys1656 Arg1765 Lys1827	Omar and Mann <sup>15</sup> Lee and Mann <sup>105</sup> Zeibdawi and Pryzdial <sup>106</sup>
(sc)-tPA	Arg275	Pennica et al <sup>107</sup> Johanessen et al <sup>108</sup>
(sc)-uPA	Lys158 Lys135	Irigoyen et al <sup>109</sup> Collen and Lijnen <sup>20</sup>
TFPI	Lys86 Arg107 Arg199 Lys249 Lys256	Li and Wun <sup>19</sup>
Factor X	Lys433	Pryzdial et al <sup>18</sup>
Factor IX	Lys43 Arg145 Arg180 Lys316 Arg318	Samis et al <sup>17</sup>
TAFI	Arg92 Arg302 Lys327 Arg330	Marx et al <sup>110</sup>
Factor VIII	Lys36 Arg336 Arg372 Arg740	Nogami et al <sup>111</sup> Ogiwara et al <sup>16</sup> Nishiya et al <sup>112</sup>
ADAMTS13	Unknown	Crawley et al <sup>21</sup>
VWF	Lys1491	Brophy et al <sup>3</sup>

Abbreviations: ADAMTS13, a disintegrin and metalloproteinase with a thrombospondin type 1 motif, member 13; sc, single-chain; TFPI, tissue factor pathway inhibitor; tPA, tissue plasminogen activator; VWF, von Willebrand factor.

plasmin, thereby preserving procoagulant activity in plasma and its adhesive role in platelet thrombi.<sup>49</sup> This might indicate that the presence of VWF in platelet-rich thrombi may contribute to their resistance to thrombolytic therapy.<sup>49</sup>

Plasmin has limited affinity for binding to and cleavage of globular VWF, but shear- or denaturant- (e.g., ristocetin) induced unfolding and consequent exposure of the VWF A1 domain strongly enhance this process.<sup>3,4,50</sup> Of note, plasmin-binding sites and plasmin proteolysis sites within VWF are distinct. Under shear stress, conformational changes in A1A2 facilitate plasmin binding to lysine-rich regions 1405<sup>KKKK</sup>1408

in the VWF A1 domain, which subsequently enables specific plasmin cleavage at the K1491-R1492 peptide bond within the VWF A1-A2 linker region.<sup>3,4</sup>

VWF glycans play an important role in modulating VWF cleavage by plasmin.<sup>3,51</sup> First, desialylation of VWF enhances proteolysis by plasmin while it inhibits ADAMTS13 proteolysis.<sup>3,52,53</sup> Second, susceptibility of VWF to plasmin proteolysis at K1491-R1492 is modulated by local N-linked glycan expression within A1A2A3. More precisely, N-linked glycans expressed at N1515 and N1574 within the A2 domain protect VWF against proteolysis by both plasmin and ADAMTS13.<sup>3,54,55</sup> Finally, ABO(H) blood group determinants modulate VWF susceptibility to proteolysis by ADAMTS13 (O ≥ B > A ≥ AB) but do not influence plasmin-mediated cleavage.<sup>3,56</sup>

### Disaggregation of VWF-platelet Complexes in the Presence of Plasmin

In the complete absence of ADAMTS13, as in TTP, platelets as well as UL-VWF are present in the circulation (►Fig. 3B). However, obstructive microthrombi do not form spontaneously until a triggering event, for instance an infection, occurs. At that moment, vascular endothelial cells are the first to react on differences in oxygenation and respond to hypoxia through expression of extracellular uPA receptor.<sup>57</sup> Subsequently, uPA-dependent plasmin formation on endothelial cells results in degradation of platelet-VWF complexes.<sup>4</sup> Furthermore, exogenously added thrombolytic agents degrade platelet-VWF complexes with equal efficacy and can be securely controlled by the administration of lysine analogues.<sup>4</sup> This may have important clinical implications, as thrombolytic agents may thus have therapeutic value in the treatment of TTP.<sup>4</sup> In fact, Tersteeg et al found that a single dose (10 U/mL, corresponding to ~20% of the loading dose given for pulmonary embolism) of the plasminogen (human, injected at 20 mg/kg) activator streptokinase was sufficient to attenuate symptoms of TTP and correct the thrombocytopenia in an ADAMTS13-deficient mouse model. Importantly, no evidence of bleeding or a perturbed secondary hemostasis was observed after this treatment.<sup>4</sup> Hence, further studies on the safety and efficacy of therapeutic application of thrombolytic agents for TTP are warranted.

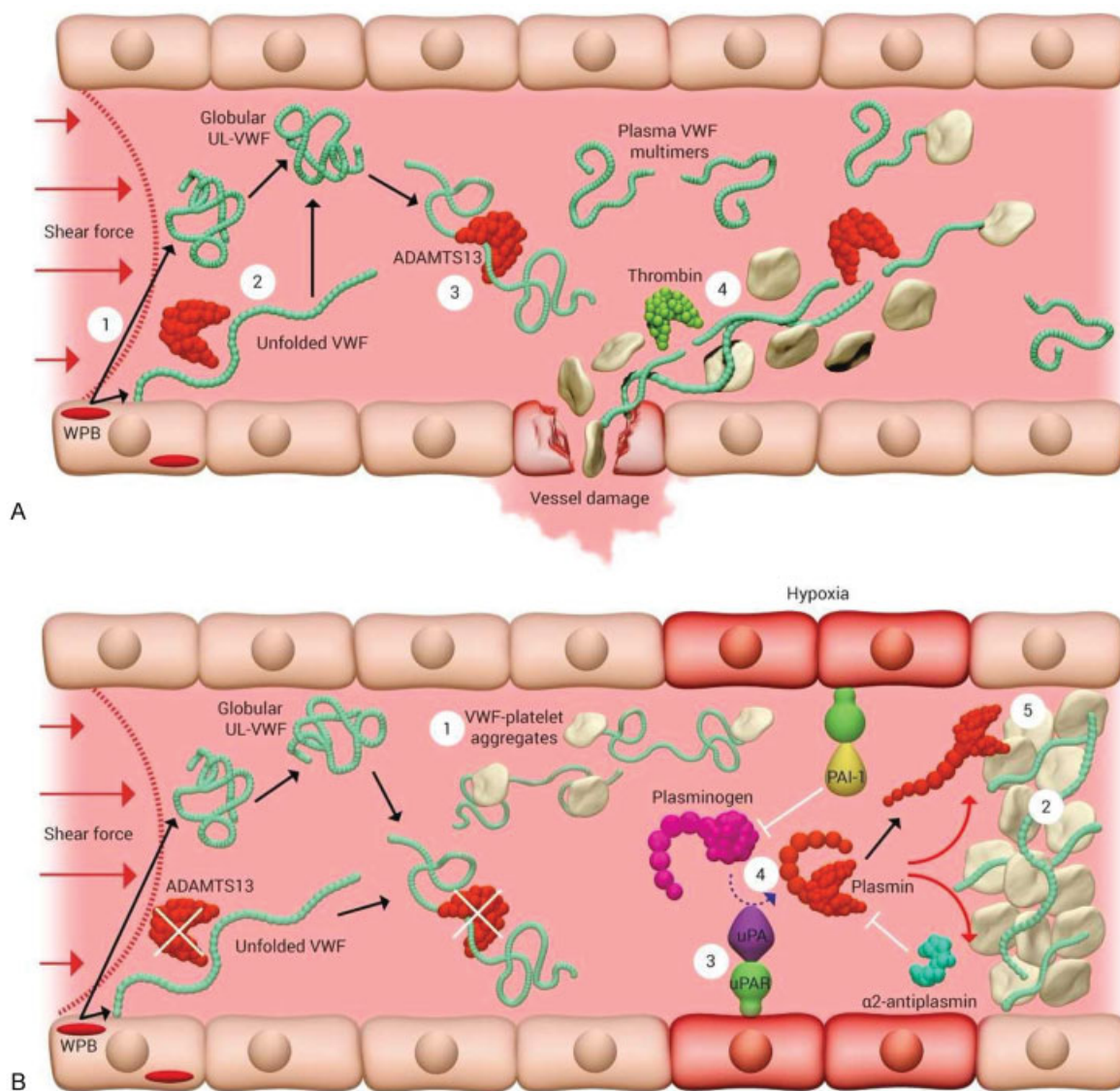
## Plasmin and Platelets

A comprehensive overview of platelet adhesion, activation, and aggregation was reviewed by Broos et al.<sup>58</sup> Key findings on the effects of plasmin on platelets reported in literature and the experimental concentrations of plasmin used are summarized in ►Table 3.

### (In)activation of Platelets by Plasmin

Under physiological conditions, plasmin activity is restricted to the proximity of the thrombus by plasma proteinase inhibitors. In stroke or deep vein thrombus formation, treatment with thrombolytic drugs can lead to free active plasmin in the circulation.<sup>59,60</sup> Sometimes, after a successful reperfusion, reocclusion of the damaged vessel occurs and marked platelet activation can be detected.<sup>20,61-66</sup>





**Fig. 3** Model of VWF cleavage by ADAMTS13 (A) and plasmin (B). (A) Graphic representation of VWF proteolysis by ADAMTS13. (1) UL-VWF in a globular conformation is synthesized by the endothelium, stored within, and secreted into the circulation by Weibel-Palade bodies (WPB). (2) Alternatively, a proportion of UL-VWF may remain transiently bound to the endothelial surface during exocytosis and unfold to a stretched conformation in response to shear. This conformation exposes the VWF A2 domain, enabling ADAMTS13 to cleave and release VWF into the circulation, where it adopts a globular conformation. (3) During passage through the microvasculature, globular UL-VWF in free circulation may unravel partially, allowing for cleavage of the largest, most thrombogenic multimers to smaller multimers that do not spontaneously interact with platelets. (4) At sites of vessel damage, plasma VWF will bind to exposed subendothelial collagen and subsequently, VWF unravels, and recruits platelets. The presence of collagen and thrombin induces rapid platelet activation, resulting in platelet plug formation. (B) Plasmin as an alternative protease for ADAMTS-13 to cleave VWF multimers. (1) Low or reduced ADAMTS13 levels/activities result in the loss of plasma VWF processing. Under these circumstances, platelets become bound to transiently unraveled VWF, (2) leading to accumulation of VWF-platelet aggregates that occlude the microvasculature, as seen in patients presenting with TTP. (3) Endothelial cells near the occlusion sense hypoxia and present urokinase-type plasminogen activator receptors (uPAR) on their surfaces. (4) Plasminogen is activated to plasmin by uPA bound to its receptor. Plasmin then attempts to clear the obstructed vessel by cleaving VWF in the occluding thrombus.

In the early 1970s, Niewiarowski et al were the first to report reversible plasmin-induced platelet aggregation, accompanied by a significant granule release.<sup>67,68</sup> In contrast, plasmin treatment could also reduce platelet aggregation after stimulation with thrombin, collagen, or adenosine diphosphate (ADP).<sup>67,69</sup> These results already suggested a dual effect of plasmin depending on plasmin concentration, temperature, exposure time, and platelet environment.

Plasmin, at concentrations  $\geq 1$  caseinolytic unit [CU]/mL causes platelet degranulation and aggregation in *in vitro* studies using isolated, plasma-free platelets.<sup>61,70-74</sup> To compare, the amount of plasminogen in 1 mL of normal plasma corresponds to 3 to 4 CU,<sup>75</sup> which amounts to a concentration of  $20.3 \pm 2.6$  mg/100 mL or 80  $\mu$ M of plasmin. The clinical dose of r-tPA used for treatment of ischemic stroke (0.9 mg/kg for 1 hour) resulted in the generation of 1.6 CU/mL

**Table 2** Effects of plasmin on VWF: key findings per paper and concentrations of reagents used

Year	Investigator	Key finding(s)	Plasmin concentration used	VWF concentration used
1978	Atichartakarn et al <sup>46</sup>	Plasmin rapidly destroys the coagulant activity of factor VIII but not ristocetin-cofactor activity.	0.6 CU/mL	0.76 mg/mL (FVIII:VWF)
1979	Henriksson and Nilsson <sup>47</sup>	Rapid loss of VWF activity upon incubation with 1.96 CU/mL plasmin.	0.96 CU/mL; 1.92 CU/mL	2.5 U/mL (FVIII:VWF)
1979	Switzer and McKee <sup>44</sup>	Cleavage of the multimeric structure of VWF by plasmin to lower molecular weight fragments.	0.6–0.8 CU/mL	0.6–1.2 absorbance units <sup>a</sup>
1984	Federici et al <sup>51</sup>	Carbohydrate chains protect VWF from disaggregation secondarily to proteolytic attack by plasmin.	4 and 8 µg/mg of VWF	~10 µg/mL <sup>b</sup>
1985	Hamilton et al <sup>45</sup>	Plasmin degrades the large VWF multimers to smaller forms by cleaving within disulfide loops.	3.2 mg/mL (20 CU/mg)	2 mg/mL
1987	Berkowitz and Federici <sup>53</sup>	Plasmin cleaves a 176-kD fragment from the N terminus and a 145 kDa fragment from the C terminus of the subunit. These species were demonstrated in plasmas from 4 patients with DVT treated with fibrinolytic agents, but not in type IIa VWD.	1.8 mg/mL	~10 µg/mL <sup>b</sup>
2000	Bonnefoy and Legrand <sup>48</sup>	VWF is rapidly released from native subendothelium when incubated with plasmin on a confluent endothelial cell monolayer. The released VWF is more resistant to proteolysis than constitutively secreted VWF.	0.2 CU/mL (200 nM)	6 µg/mL
2010	Tanka-Salamon et al <sup>49</sup>	At its physiological concentration VWF is able to protect fibrinogen from degradation by plasmin.	12.5 nM	10 µg/mL
2012	Wohner et al <sup>50</sup>	Plasmin at concentrations of in vivo relevance resulted in extensive degradation of VWF within several minutes.	50 nM	10 µg/mL
2014	Tersteeg et al <sup>4</sup>	Efficiency of VWF cleavage by plasmin is a function of its conformation: plasmin has limited affinity for binding to, and cleavage of, globular VWF, but shear- or denaturant-mediated unfolding strongly enhances this process.	Not specified <sup>c</sup>	Not determined <sup>d</sup>
2017	Brophy et al <sup>3</sup>	Globular VWF is resistant to plasmin cleavage under static conditions, but is readily cleaved by plasmin under shear. Plasmin cleaves the K1491-R1492 peptide bond within the VWF A1–A2 linker region. VWF susceptibility to plasmin proteolysis is modulated by local N-linked glycan expression within A1A2A3, and can be specifically inhibited by heparin binding to the A1 domain.	12.8 nM	10 µg/mL

Abbreviations: CU, caseinolytic units; VWF, von Willebrand factor.

<sup>a</sup>VWF concentration was estimated by the absorbance at 280 nm, corrected for light scattering, and expressed as absorbance units.

<sup>b</sup>Estimated plasma concentration of VWF.

<sup>c</sup>216 µg/mL plasminogen + 10 ng/mL uPA or 10 U/mL streptokinase.

<sup>d</sup>VWF from cultured human umbilical vein endothelial cells (HUVECs) stimulated to release VWF by addition of phorbol 12-myristate 13-acetate (PMA).

**Table 3** Effects of plasmin on platelets: key findings per paper and concentrations of reagents used

Year	Investigator	Key finding(s)	Plasmin concentration used
1973	Niewiarowski et al <sup>67</sup>	Plasmin-induced platelet aggregation is reversible and is accompanied by significant granule release.	2.2 CU/mg
1985	Adelman et al <sup>91</sup>	Treatment of washed platelets with plasmin resulted in progressive loss of GPIb accompanied by loss of the agglutination response when combined with ristocetin in the presence of VWF.	1 CU/mL
1985	Adelman et al <sup>92</sup>	Plasmin reduced ristocetin-mediated agglutination of washed platelets in the presence of VWF following a 60-min incubation. Plasmin treatment of washed platelets released a glycolaligin-related antigen into the surrounding medium, corresponding to loss of VWF-dependent, ristocetin-induced agglutination.	0.05–1.0 CU/mL
1985	Schafer and Adelman <sup>79</sup>	Plasmin concentrations that did not affect platelet shape change, release, or aggregation (< 1.0 CU/mL) caused a dose- and time-dependent inhibition of platelet aggregation in response to thrombin, ionophore A23187, and collagen. Complete loss of aggregation occurred at 0.1–0.5 CU/mL of plasmin.	<1.0 CU/mL 0.1–0.5 CU/mL
1986	Schafer et al <sup>70</sup>	In washed human platelets, plasmin at concentrations of $\geq 1.0$ CU/mL induces aggregation.	$\geq 1.0$ CU/mL
1991	Cramer et al <sup>95</sup>	Plasmin treatment of platelets at 37°C resulted in the disappearance of GPIb from the cell surface and its subsequent redistribution into the channels and vesicles of the surface-connected canalicular system.	0.2 CU/mL
1991	Lu et al <sup>78</sup>	Lowering the temperature from 37 to 22°C, plasmin at low concentrations (0.1–0.5 CU/mL) fully activated platelets. When platelets were treated with 0.2 CU/mL of plasmin, lowering the temperature resulted in increased expression of fibrinogen receptors, in platelet release and aggregation.	0.1–0.5 CU/mL
1992	Gouin et al <sup>84</sup>	Incubation of human platelet-rich plasma with streptokinase does not produce any detectable platelet activation but leads to a time-dependent inhibition of ADP-induced aggregation accompanied by substantial fibrinogenolysis.	Not determined <sup>a</sup>
1994	Pasche et al <sup>83</sup>	Plasmin treatment reduced maximal reversible fibrinogen binding in a dose-dependent fashion, and this reduction in binding was accompanied by a correlative reduction in the maximal rate of aggregation.	0.4–4 CU/mL
1995	Loscalzo et al <sup>74</sup>	Plasmin at higher concentrations ( $\sim 1$ CU/mL), plasmin activates the platelet directly.	1.0 CU/mL
1995	Nakamura et al <sup>71</sup>	Plasmin produces a small rise in platelet cytosolic Ca <sup>2+</sup> and a tyrosine kinase-dependent enhancement of Ca <sup>2+</sup> turnover.	$\geq 1.0$ CU/mL
1997	Kinlough-Rathbone et al <sup>80</sup>	Incubation with plasmin almost completely inhibited thrombin-induced aggregation, release of serotonin, and increase in cytosolic Ca <sup>2+</sup> .	0.2 CU/mL
2000	Ishii-Watabe et al <sup>72</sup>	Plasmin causes the degranulation of platelets; subsequently, ADP released from granules plays a crucial role in the induction of platelet aggregation.	$\geq 1.0$ CU/mL
2001	Ervin and Peerschke <sup>77</sup>	Sustained exposure (60 min) of platelets to very low plasmin doses leads to platelet activation, both at 22 and 37°C. The resulting platelet aggregation was not accompanied by dense or $\alpha$ -granule secretion.	0.05 CU/mL
2004	Quinton et al <sup>88</sup>	Desensitization of PAR1 has no effect on plasmin-induced platelet aggregation. PAR4 is cleaved by plasmin at the thrombin-cleavage site R47. Desensitization of PAR4 completely eliminates plasmin-induced aggregation. Platelets treated with a PAR4 antagonist do not aggregate in response to plasmin.	1 CU/mL

Abbreviations: CU, caseolytic units; VWF, von Willebrand factor.

<sup>a</sup>300 IU/mL streptokinase was added to platelet-rich plasma.

plasmin in a canine animal model.<sup>76</sup> More in detail, plasmin activates protein kinase C (PKC) and stimulates dose-dependent diacylglycerol (and phosphatic acid) production by phospholipase C activation.<sup>70</sup> Subsequently, plasmin produces a small rise in platelet cytosolic  $\text{Ca}^{2+}$  and a tyrosine kinase-dependent enhancement of  $\text{Ca}^{2+}$  turnover.<sup>70,71</sup> Upon plasmin-induced platelet degranulation, ADP most likely plays a crucial role in the induction of platelet aggregation via the P2Tac receptor.<sup>72</sup> Interestingly, prolonged (>60 minutes) exposure of platelets to very low doses (0.05 CU/mL) of plasmin also leads to platelet aggregation and enhanced expression of procoagulant activity.<sup>77</sup> Likewise, upon lowering the temperature to 22°C, incubation with low concentrations of plasmin (<0.1 CU/mL) induces strong platelet aggregation.<sup>78</sup> These results may be of clinical relevance, because the fibrinolytic system was found to be activated during cardiopulmonary bypass, in which the temperature of the patient's blood is reduced.<sup>78</sup>

Plasmin at concentrations less than 1.0 CU/mL can cause a dose- and time-dependent inhibition of platelet aggregation and thromboxane B2 (TXB<sub>2</sub>, inactive metabolite of TXA<sub>2</sub>) production in response to thrombin, ionophore A23187, and collagen.<sup>61,74,79,80</sup> This plasmin-induced inhibitory effect may result from a proteolysis-mediated increase in cyclic AMP,<sup>81</sup> blockage of the mobilization of arachidonic acid from membrane phospholipid pools,<sup>79</sup> and/or modification of the expression of glycoprotein receptors (GPIb and GPIIb/IIIa, see below for more details). Interestingly, plasmin synergizes with prostaglandin I<sub>2</sub> in inhibiting thrombin- and ADP-induced platelet activity, a finding of potential importance for the control of platelet accrual at sites of vascular injury, where the release of tPA and prostaglandin I<sub>2</sub> by adjacent endothelial cells is generally increased.<sup>82</sup>

Of note, in plasma, the main effect of plasmin is impairment of aggregation.<sup>83,84</sup> However, this is not related to a direct effect of plasmin on platelets. Plasmin degrades fibrinogen and fibrin/fibrinogen degradation products bind to fibrinogen and/or GPIIb/IIIa receptors, both resulting in a reduction of the formation of fibrinogen bridges between platelets.<sup>85</sup> Additionally, in plasma, plasmin is inhibited by  $\alpha$ 2-antiplasmin.<sup>86</sup>

### Plasmin Activates Platelets via PAR4

Plasmin cleaves both thrombin receptors PAR1 and PAR4 on platelets.<sup>87,88</sup> Cleavage by plasmin was reported to be 1,700-fold lower relative to thrombin cleavage.<sup>89,90</sup> Four cleavage sites have been identified on the PAR1 exodomain (R41, R70, K76, and K82). R41 is the thrombin-cleavage site and generates a transiently activated exodomain. The R70, K76, and K82 sites are located on a linker region that tethers the ligand to the body of the receptor. However, the high affinity of plasmin for R70, K76, and K82 and the low affinity for R41 (thrombin-cleavage site) result predominantly in inactivation of PAR1 by truncating the tethered ligand at the distal sites.<sup>87</sup> Additionally, desensitization of PAR1 had no effect on plasmin-induced platelet aggregation.<sup>88</sup> PAR4, on the other hand, is cleaved by plasmin at the thrombin-cleavage site R47.<sup>88</sup> As a result, desensitization of PAR4 completely elimi-

nated aggregation in response to plasmin, and platelets treated with a PAR4 antagonist, as well as platelets isolated from PAR4 homozygous null mice, failed to aggregate in response to plasmin. Altogether, Quinton et al concluded that plasmin induces platelet aggregation primarily through slow cleavage of PAR4.<sup>88</sup>

### Plasmin Induces Reversible Translocation of Platelet GPIb

The addition of plasmin to washed platelets results in progressive loss of GPIb as measured by fluorescence flow cytometry and by the loss of ristocetin-induced VWF-dependent platelet agglutination.<sup>91,92</sup> The loss of platelet surface GPIb, initially assigned to plasmin-mediated cleavage of GPIb,<sup>92-94</sup> is now known to be related to a redistribution of GPIb, which moves from the external membrane into the surface-connected canalicular system.<sup>95</sup> This translocation of GPIb is related to actin polymerization, as cytochalasin D (a specific inhibitor of actin polymerization) inhibited the migration of GPIb after plasmin stimulation.<sup>95</sup> Subsequently, neutralization of plasmin by the inhibitors aprotinin and tripeptide Val-Phe-Lys-CH<sub>2</sub>Cl permitted a time-dependent recovery of platelet agglutination.<sup>96</sup> The functional recovery was accompanied by a restoration of a normal amount of GPIb on the platelet surface. This suggests a reverse translocation of the GPIb molecules initially present at the cell surface.<sup>96</sup>

### Effect of Plasmin on GPIIb/IIIa

Plasmin exerts opposing effects on GPIIb/IIIa, resulting in enhanced or impaired fibrinogen binding and platelet aggregation. On the one hand, plasmin-induced platelet activation and granule release result in the expression of active GPIIb/IIIa receptors on the cell surface.<sup>97</sup> On the other hand, in plasma, plasmin degrades GPIIIa by cleaving a proteolytically susceptible loop domain, but only after degradation of the solubilized GPIIb/IIIa by *Staphylococcus aureus* V8 (Glu-C) endoprotease.<sup>83</sup> In contrast, treatment of isolated platelets with plasmin has no effect on GPIIb/IIIa expression.<sup>95</sup> These findings suggest that, in plasma, plasmin modifies GPIIIa by a unique proteolytic event that is dependent on fibrinogen binding and, consequently, is accompanied by significant reduction in fibrinogen binding and aggregation.<sup>83</sup>

## Conclusion

Although the mechanism of plasmin generation and its function in fibrinolysis are rather well-defined, the precise (patho)physiological effects of plasmin on other components of the coagulation cascade are hitherto not completely understood. In this review, we provide an overview of the available evidence on the effects of plasmin on VWF and platelets. Summarizing, it can be stated that, in addition to ADAMTS13, plasmin can regulate the thrombogenicity of VWF through its protease activity. This role of plasmin appears particularly important in pathologies in which high-molecular-weight VWF multimers accumulate, as exemplified by TTP. Moreover, although plasmin-mediated platelet activation is unlikely to play a significant role in normal hemostasis, during pharmacological



thrombolysis where the plasmin activity could reach as high as 1 CU/mL, it may have implications in terms of vessel patency and effectiveness of treatment. Hence, future research should focus on obtaining a better understanding of the molecular mechanisms of plasmin binding to and cleavage of VWF as well as of plasmin's effects on platelet activation and aggregation. For experiments with platelets, particular attention should be given to simulating the in vivo environment as much as possible in the experimental conditions to obtain reliable results. Together, this knowledge on the interaction of plasmin, VWF, and platelets will support the ongoing development of novel therapies<sup>98,99</sup> as well as the use of existing thrombolytic therapy to potentially prevent the occurrence of, or degrade, existing VWF-platelet aggregates in conditions such as TTP.

#### Conflict of Interest

None declared.

#### References

- Longstaff C, Kolev K. Basic mechanisms and regulation of fibrinolysis. *J Thromb Haemost* 2015;13(Suppl 1):S98–S105
- Cesarman-Maus G, Hajjar KA. Molecular mechanisms of fibrinolysis. *Br J Haematol* 2005;129(03):307–321
- Brophy TM, Ward SE, McGimsey TR, et al. Plasmin cleaves von Willebrand factor at K1491–R1492 in the A1–A2 linker region in a shear- and glycan-dependent manner in vitro. *Arterioscler Thromb Vasc Biol* 2017;37(05):845–855
- Tersteeg C, de Maat S, De Meyer SF, et al. Plasmin cleavage of von Willebrand factor as an emergency bypass for ADAMTS13 deficiency in thrombotic microangiopathy. *Circulation* 2014;129(12):1320–1331
- Raum D, Marcus D, Alper CA, Levey R, Taylor PD, Starzl TE. Synthesis of human plasminogen by the liver. *Science* 1980;208(4447):1036–1037
- Hajjar KA. The molecular basis of fibrinolysis. In: Nathan DG, Orkin SH, Ginsburg D, Look AT, eds. *Hematology of Infancy and Childhood*. Philadelphia, PA: WB Saunders Co; 2003: 1497–1514
- Forsgren M, Råden B, Israelsson M, Larsson K, Hedén LO. Molecular cloning and characterization of a full-length cDNA clone for human plasminogen. *FEBS Lett* 1987;213(02):254–260
- Holvoet P, Lijnen HR, Collen D. A monoclonal antibody specific for Lys-plasminogen. Application to the study of the activation pathways of plasminogen in vivo. *J Biol Chem* 1985;260(22): 12106–12111
- Ny T, Sawdey M, Lawrence D, Millan JL, Loskutoff DJ. Cloning and sequence of a cDNA coding for the human beta-migrating endothelial-cell-type plasminogen activator inhibitor. *Proc Natl Acad Sci U S A* 1986;83(18):6776–6780
- Ye RD, Wun TC, Sadler JE. cDNA cloning and expression in *Escherichia coli* of a plasminogen activator inhibitor from human placenta. *J Biol Chem* 1987;262(08):3718–3725
- Thorsen S, Clemmensen I, Sottrup-Jensen L, Magnusson S. Adsorption to fibrin of native fragments of known primary structure from human plasminogen. *Biochim Biophys Acta* 1981;668(03):377–387
- Medved L, Nieuwenhuizen W. Molecular mechanisms of initiation of fibrinolysis by fibrin. *Thromb Haemost* 2003;89(03):409–419
- Redlitz A, Tan AK, Eaton DL, Plow EF. Plasma carboxypeptidases as regulators of the plasminogen system. *J Clin Invest* 1995;96(05):2534–2538
- Aoki N, Moroi M, Tachiya K. Effects of alpha2-plasmin inhibitor on fibrin clot lysis. Its comparison with alpha2-macroglobulin. *Thromb Haemost* 1978;39(01):22–31
- Omar MN, Mann KG. Inactivation of factor Va by plasmin. *J Biol Chem* 1987;262(20):9750–9755
- Ogiwara K, Nogami K, Nishiya K, Shima M. Plasmin-induced procoagulant effects in the blood coagulation: a crucial role of coagulation factors V and VIII. *Blood Coagul Fibrinolysis* 2010;21(06):568–576
- Samis JA, Ramsey GD, Walker JB, Nesheim ME, Giles AR. Proteolytic processing of human coagulation factor IX by plasmin. *Blood* 2000;95(03):943–951
- Pryzdial EL, Lavigne N, Dupuis N, Kessler GE. Plasmin converts factor X from coagulation zymogen to fibrinolysis cofactor. *J Biol Chem* 1999;274(13):8500–8505
- Li A, Wun TC. Proteolysis of tissue factor pathway inhibitor (TFPI) by plasmin: effect on TFPI activity. *Thromb Haemost* 1998;80(03):423–427
- Collen D, Lijnen HR. Basic and clinical aspects of fibrinolysis and thrombolysis. *Blood* 1991;78(12):3114–3124
- Crawley JT, Lam JK, Rance JB, Mollica LR, O'Donnell JS, Lane DA. Proteolytic inactivation of ADAMTS13 by thrombin and plasmin. *Blood* 2005;105(03):1085–1093
- Peyvandi F, Garagiola I, Baronciani L. Role of von Willebrand factor in the haemostasis. *Blood Transfus* 2011;9(Suppl 2):s3–s8
- Wagner DD. Cell biology of von Willebrand factor. *Annu Rev Cell Biol* 1990;6:217–246
- Furlan M. Von Willebrand factor: molecular size and functional activity. *Ann Hematol* 1996;72(06):341–348
- Zhou YF, Eng ET, Zhu J, Lu C, Walz T, Springer TA. Sequence and structure relationships within von Willebrand factor. *Blood* 2012;120(02):449–458
- Schneider SW, Nuschele S, Wixforth A, et al. Shear-induced unfolding triggers adhesion of von Willebrand factor fibers. *Proc Natl Acad Sci U S A* 2007;104(19):7899–7903
- Ruggeri ZM. Role of von Willebrand factor in platelet thrombus formation. *Ann Med* 2000;32(Suppl 1):2–9
- Owen WG, Wagner RH. Antihemophilic factor: separation of an active fragment following dissociation by salts or detergents. *Thromb Diath Haemorrh* 1972;27(03):502–515
- Dong JF, Moake JL, Nolasco L, et al. ADAMTS-13 rapidly cleaves newly secreted ultralarge von Willebrand factor multimers on the endothelial surface under flowing conditions. *Blood* 2002; 100(12):4033–4039
- Liu L, Choi H, Bernardo A, et al. Platelet-derived VWF-cleaving metalloprotease ADAMTS-13. *J Thromb Haemost* 2005;3(11): 2536–2544
- Savage B, Sixma JJ, Ruggeri ZM. Functional self-association of von Willebrand factor during platelet adhesion under flow. *Proc Natl Acad Sci U S A* 2002;99(01):425–430
- Savage B, Saldívar E, Ruggeri ZM. Initiation of platelet adhesion by arrest onto fibrinogen or translocation on von Willebrand factor. *Cell* 1996;84(02):289–297
- Vicente V, Kostel PJ, Ruggeri ZM. Isolation and functional characterization of the von Willebrand factor-binding domain located between residues His1–Arg293 of the alpha-chain of glycoprotein Ib. *J Biol Chem* 1988;263(34):18473–18479
- Fujimura Y, Titani K, Holland LZ, et al. von Willebrand factor. A reduced and alkylated 52/48-kDa fragment beginning at amino acid residue 449 contains the domain interacting with platelet glycoprotein Ib. *J Biol Chem* 1986;261(01):381–385
- Plow EF, Pierschbacher MD, Ruoslahti E, Marguerie GA, Ginsberg MH. The effect of Arg-Gly-Asp-containing peptides on fibrinogen and von Willebrand factor binding to platelets. *Proc Natl Acad Sci U S A* 1985;82(23):8057–8061
- Tsai HM, Lian EC. Antibodies to von Willebrand factor-cleaving protease in acute thrombotic thrombocytopenic purpura. *N Engl J Med* 1998;339(22):1585–1594
- Tsai Mourik JA, Boertjes R, Huisveld IA, et al. von Willebrand factor propeptide in vascular disorders: a tool to distinguish

- between acute and chronic endothelial cell perturbation. *Blood* 1999;94(01):179–185
- 38 Crawley JT, Scully MA. Thrombotic thrombocytopenic purpura: basic pathophysiology and therapeutic strategies. *Hematology (Am Soc Hematol Educ Program)* 2013;2013:292–299
  - 39 Zheng XL, Kaufman RM, Goodnough LT, Sadler JE. Effect of plasma exchange on plasma ADAMTS13 metalloprotease activity, inhibitor level, and clinical outcome in patients with idiopathic and nonidiopathic thrombotic thrombocytopenic purpura. *Blood* 2004;103(11):4043–4049
  - 40 Furlan M, Robles R, Galbusera M, et al. von Willebrand factor-cleaving protease in thrombotic thrombocytopenic purpura and the hemolytic-uremic syndrome. *N Engl J Med* 1998;339(22):1578–1584
  - 41 Jin M, Casper TC, Cataland SR, et al. Relationship between ADAMTS13 activity in clinical remission and the risk of TTP relapse. *Br J Haematol* 2008;141(05):651–658
  - 42 Peyvandi F, Lavoretano S, Palla R, et al. ADAMTS13 and anti-ADAMTS13 antibodies as markers for recurrence of acquired thrombotic thrombocytopenic purpura during remission. *Haematologica* 2008;93(02):232–239
  - 43 Kolev K, Léránt I, Tenekejev K, Machovich R. Regulation of fibrinolytic activity of neutrophil leukocyte elastase, plasmin, and miniplasmin by plasma protease inhibitors. *J Biol Chem* 1994;269(25):17030–17034
  - 44 Switzer ME, McKee PA. Immunologic studies of native and modified human factor VIII/von Willebrand factor. *Blood* 1979;54(02):310–321
  - 45 Hamilton KK, Fretto LJ, Grierson DS, McKee PA. Effects of plasmin on von Willebrand factor multimers. Degradation in vitro and stimulation of release in vivo. *J Clin Invest* 1985;76(01):261–270
  - 46 Atichartakarn V, Marder VJ, Kirby EP, Budzynski AZ. Effects of enzymatic degradation on the subunit composition and biologic properties of human factor VIII. *Blood* 1978;51(02):281–297
  - 47 Henriksson P, Nilsson IM. Effects of leukocytes, plasmin and thrombin on clotting factors. A comparative in vitro study. *Thromb Res* 1979;16(3-4):301–312
  - 48 Bonnefoy A, Legrand C. Proteolysis of subendothelial adhesive glycoproteins (fibronectin, thrombospondin, and von Willebrand factor) by plasmin, leukocyte cathepsin G, and elastase. *Thromb Res* 2000;98(04):323–332
  - 49 Tanka-Salamon A, Kolev K, Machovich R, Komorowicz E. Proteolytic resistance conferred to fibrinogen by von Willebrand factor. *Thromb Haemost* 2010;103(02):291–298
  - 50 Wohner N, Kovács A, Machovich R, Kolev K. Modulation of the von Willebrand factor-dependent platelet adhesion through alternative proteolytic pathways. *Thromb Res* 2012;129(04):e41–e46
  - 51 Federici AB, Elder JH, De Marco L, Ruggeri ZM, Zimmerman TS. Carbohydrate moiety of von Willebrand factor is not necessary for maintaining multimeric structure and ristocetin cofactor activity but protects from proteolytic degradation. *J Clin Invest* 1984;74(06):2049–2055
  - 52 McGrath RT, McKinnon TA, Byrne B, et al. Expression of terminal alpha2-6-linked sialic acid on von Willebrand factor specifically enhances proteolysis by ADAMTS13. *Blood* 2010;115(13):2666–2673
  - 53 Berkowitz SD, Federici AB. Sialic acid prevents loss of large von Willebrand factor multimers by protecting against amino-terminal proteolytic cleavage. *Blood* 1988;72(05):1790–1796
  - 54 McKinnon TA, Chion AC, Millington AJ, Lane DA, Laffan MA. N-linked glycosylation of VWF modulates its interaction with ADAMTS13. *Blood* 2008;111(06):3042–3049
  - 55 Nowak AA, Canis K, Riddell A, Laffan MA, McKinnon TA. O-linked glycosylation of von Willebrand factor modulates the interaction with platelet receptor glycoprotein Ib under static and shear stress conditions. *Blood* 2012;120(01):214–222
  - 56 Bowen DJ. An influence of ABO blood group on the rate of proteolysis of von Willebrand factor by ADAMTS13. *J Thromb Haemost* 2003;1(01):33–40
  - 57 Graham CH, Fitzpatrick TE, McCrae KR. Hypoxia stimulates urokinase receptor expression through a heme protein-dependent pathway. *Blood* 1998;91(09):3300–3307
  - 58 Broos K, Feys HB, De Meyer SF, Vanhoorelbeke K, Deckmyn H. Platelets at work in primary hemostasis. *Blood Rev* 2011;25(04):155–167
  - 59 Califf RM, Fortin DF, Tenaglia AN, Sane DC. Clinical risks of thrombolytic therapy. *Am J Cardiol* 1992;69(02):12A–20A
  - 60 Schweizer J, Kirch W, Koch R, et al. Short- and long-term results after thrombolytic treatment of deep venous thrombosis. *J Am Coll Cardiol* 2000;36(04):1336–1343
  - 61 Collier BS. Platelets and thrombolytic therapy. *N Engl J Med* 1990;322(01):33–42
  - 62 Fitzgerald DJ, Catella F, Roy L, FitzGerald GA. Marked platelet activation in vivo after intravenous streptokinase in patients with acute myocardial infarction. *Circulation* 1988;77(01):142–150
  - 63 Ohlstein EH, Storer B, Fujita T, Shebuski RJ. Tissue-type plasminogen activator and streptokinase induce platelet hyperaggregability in the rabbit. *Thromb Res* 1987;46(04):575–585
  - 64 Kerins DM, Roy L, FitzGerald GA, Fitzgerald DJ. Platelet and vascular function during coronary thrombolysis with tissue-type plasminogen activator. *Circulation* 1989;80(06):1718–1725
  - 65 Fitzgerald DJ, Wright F, FitzGerald GA. Increased thromboxane biosynthesis during coronary thrombolysis. Evidence that platelet activation and thromboxane A2 modulate the response to tissue-type plasminogen activator in vivo. *Circ Res* 1989;65(01):83–94
  - 66 Watabe A, Ohta M, Matsuyama N, et al. Characterization of plasmin-induced platelet aggregation. *Res Commun Mol Pathol Pharmacol* 1997;96(03):341–352
  - 67 Niewiarowski S, Senyi AF, Gillies P. Plasmin-induced platelet aggregation and platelet release reaction. Effects on hemostasis. *J Clin Invest* 1973;52(07):1647–1659
  - 68 Niewiarowski S, Gurewich V, Senyi AF, Mustard JF. The effect of fibrinolysis on platelet function. *Thromb Diath Haemorrh Suppl* 1971;47:99
  - 69 Miller JL, Katz AJ, Feinstein MB. Plasmin inhibition of thrombin-induced platelet aggregation. *Thromb Diath Haemorrh* 1975;33(02):286–309
  - 70 Schafer AI, Maas AK, Ware JA, Johnson PC, Rittenhouse SE, Salzman EW. Platelet protein phosphorylation, elevation of cytosolic calcium, and inositol phospholipid breakdown in platelet activation induced by plasmin. *J Clin Invest* 1986;78(01):73–79
  - 71 Nakamura K, Kimura M, Fenton JW II, Andersen TT, Aviv A. Duality of plasmin effect on cytosolic free calcium in human platelets. *Am J Physiol* 1995;268(4, Pt 1):C958–C967
  - 72 Ishii-Watabe A, Uchida E, Mizuguchi H, Hayakawa T. On the mechanism of plasmin-induced platelet aggregation. Implications of the dual role of granule ADP. *Biochem Pharmacol* 2000;59(11):1345–1355
  - 73 Pasche B, Loscalzo J. Platelets and fibrinolysis. *Platelets* 1991;2(03):125–134
  - 74 Loscalzo J, Pasche B, Ouimet H, Freedman JE. Platelets and plasminogen activation. *Thromb Haemost* 1995;74(01):291–293
  - 75 Friberger P. Synthetic peptide substrate assays in coagulation and fibrinolysis and their application on automates. *Semin Thromb Hemost* 1983;9(04):281–300
  - 76 Rudd MA, George D, Amarante P, Vaughan DE, Loscalzo J. Temporal effects of thrombolytic agents on platelet function in vivo and their modulation by prostaglandins. *Circ Res* 1990;67(05):1175–1181
  - 77 Ervin AL, Peerschke EI. Platelet activation by sustained exposure to low-dose plasmin. *Blood Coagul Fibrinolysis* 2001;12(06):415–425

- 78 Lu H, Soria C, Cramer EM, et al. Temperature dependence of plasmin-induced activation or inhibition of human platelets. *Blood* 1991;77(05):996–1005
- 79 Schafer AI, Adelman B. Plasmin inhibition of platelet function and of arachidonic acid metabolism. *J Clin Invest* 1985;75(02):456–461
- 80 Kinlough-Rathbone RL, Perry DW, Rand ML, Packham MA. Pretreatment of human platelets with plasmin inhibits responses to thrombin, but potentiates responses to low concentrations of aggregating agents, including the thrombin receptor activating peptide, SFLLRN. *Thromb Haemost* 1997;77(04):741–747
- 81 Adnot S, Ferry N, Hanoune J, Lacombe ML. Plasmin: a possible physiological modulator of the human platelet adenylate cyclase system. *Clin Sci (Lond)* 1987;72(04):467–473
- 82 Gresle P, Kleiman NS, Lopez JA, Page CP. Platelets in Thrombotic and Non-Thrombotic Disorders. 1st ed. Cham, Switzerland: Springer International Publishing; 2017
- 83 Pasche B, Ouimet H, Francis S, Loscalzo J. Structural changes in platelet glycoprotein IIb/IIIa by plasmin: determinants and functional consequences. *Blood* 1994;83(02):404–414
- 84 Gouin I, Lecompte T, Morel MC, et al. In vitro effect of plasmin on human platelet function in plasma. Inhibition of aggregation caused by fibrinogenolysis. *Circulation* 1992;85(03):935–941
- 85 de Haan J, Schönberger J, Haan J, van Oeveren W, Eijgelaar A. Tissue-type plasminogen activator and fibrin monomers synergistically cause platelet dysfunction during retransfusion of shed blood after cardiopulmonary bypass. *J Thorac Cardiovasc Surg* 1993;106(06):1017–1023
- 86 Blockmans D, Deckmyn H, Hove LV, Vermynen J. The effect of plasmin on platelet function. *Platelets* 1996;7(03):139–148
- 87 Kuliopulos A, Covic L, Seeley SK, Sheridan PJ, Helin J, Costello CE. Plasmin desensitization of the PAR1 thrombin receptor: kinetics, sites of truncation, and implications for thrombolytic therapy. *Biochemistry* 1999;38(14):4572–4585
- 88 Quinton TM, Kim S, Derian CK, Jin J, Kunapuli SP. Plasmin-mediated activation of platelets occurs by cleavage of protease-activated receptor 4. *J Biol Chem* 2004;279(18):18434–18439
- 89 Kimura M, Andersen TT, Fenton JW II, Bahou WF, Aviv A. Plasmin-platelet interaction involves cleavage of functional thrombin receptor. *Am J Physiol* 1996;271(1, Pt 1):C54–C60
- 90 Parry MA, Myles T, Tschopp J, Stone SR. Cleavage of the thrombin receptor: identification of potential activators and inactivators. *Biochem J* 1996;320(Pt 1):335–341
- 91 Adelman B, Michelson AD, Handin RI, Ault KA. Evaluation of platelet glycoprotein Ib by fluorescence flow cytometry. *Blood* 1985;66(02):423–427
- 92 Adelman B, Michelson AD, Loscalzo J, Greenberg J, Handin RI. Plasmin effect on platelet glycoprotein Ib-von Willebrand factor interactions. *Blood* 1985;65(01):32–40
- 93 Adelman B, Michelson AD, Greenberg J, Handin RI. Proteolysis of platelet glycoprotein Ib by plasmin is facilitated by plasmin lysine-binding regions. *Blood* 1986;68(06):1280–1284
- 94 Kamat SG, Michelson AD, Benoit SE, et al. Fibrinolysis inhibits shear stress-induced platelet aggregation. *Circulation* 1995;92(06):1399–1407
- 95 Cramer EM, Lu H, Caen JP, Soria C, Berndt MC, Tenza D. Differential redistribution of platelet glycoproteins Ib and IIb-IIIa after plasmin stimulation. *Blood* 1991;77(04):694–699
- 96 Lu H, Soria C, Soria J, et al. Reversible translocation of glycoprotein Ib in plasmin-treated platelets: consequences for platelet function. *Eur J Clin Invest* 1993;23(12):785–793
- 97 Rabhi-Sabile S, Pidard D. Exposure of human platelets to plasmin results in the expression of irreversibly active fibrinogen receptors. *Thromb Haemost* 1995;73(04):693–701
- 98 Peyvandi F, Callewaert F. Caplacizumab for acquired thrombotic thrombocytopenic purpura. *N Engl J Med* 2016;374(25):2497–2498
- 99 Callewaert F, Roodt J, Ulrichts H, et al. Evaluation of efficacy and safety of the anti-VWF Nanobody ALX-0681 in a preclinical baboon model of acquired thrombotic thrombocytopenic purpura. *Blood* 2012;120(17):3603–3610
- 100 Schaller J, Gerber SS. The plasmin-antiplasmin system: structural and functional aspects. *Cell Mol Life Sci* 2011;68(05):785–801
- 101 Walker JB, Nesheim ME. The molecular weights, mass distribution, chain composition, and structure of soluble fibrin degradation products released from a fibrin clot perfused with plasmin. *J Biol Chem* 1999;274(08):5201–5212
- 102 Wiman B. Primary structure of peptides released during activation of human plasminogen by urokinase. *Eur J Biochem* 1973;39(01):1–9
- 103 Wiman B, Wallén P. Activation of human plasminogen by an insoluble derivative of urokinase. Structural changes of plasminogen in the course of activation to plasmin and demonstration of a possible intermediate compound. *Eur J Biochem* 1973;36(01):25–31
- 104 Violland BN, Castellino FJ. Mechanism of the urokinase-catalyzed activation of human plasminogen. *J Biol Chem* 1976;251(13):3906–3912
- 105 Lee CD, Mann KG. Activation/inactivation of human factor V by plasmin. *Blood* 1989;73(01):185–190
- 106 Zeibdawi AR, Prydzial EL. Mechanism of factor Va inactivation by plasmin. Loss of A2 and A3 domains from a Ca<sup>2+</sup>-dependent complex of fragments bound to phospholipid. *J Biol Chem* 2001;276(23):19929–19936
- 107 Pennica D, Holmes WE, Kohr WJ, et al. Cloning and expression of human tissue-type plasminogen activator cDNA in *E. coli*. *Nature* 1983;301(5897):214–221
- 108 Johannessen M, Nielsen F, Petersen LC. Plasmin-catalysed cleavage of single chain tissue-type plasminogen activator in fibrin clots. *Fibrinolysis* 1989;3(04):215–220
- 109 Irigoyen JP, Muñoz-Cánoves P, Montero L, Koziczak M, Nagamine Y. The plasminogen activator system: biology and regulation. *Cell Mol Life Sci* 1999;56(1-2):104–132
- 110 Marx PF, Dawson PE, Bouma BN, Meijers JC. Plasmin-mediated activation and inactivation of thrombin-activatable fibrinolysis inhibitor. *Biochemistry* 2002;41(21):6688–6696
- 111 Nogami K, Shima M, Matsumoto T, Nishiya K, Tanaka I, Yoshioka A. Mechanisms of plasmin-catalyzed inactivation of factor VIII: a crucial role for proteolytic cleavage at Arg336 responsible for plasmin-catalyzed factor VIII inactivation. *J Biol Chem* 2007;282(08):5287–5295
- 112 Nishiya K, Nogami K, Okada K, et al. Determination of a factor VIII-interactive region within plasmin responsible for plasmin-catalysed activation and inactivation of factor VIII(a). *Thromb Haemost* 2010;104(01):105–117