



Transcavernous Resection of a Giant Extensive Chondrosarcoma with Endoscopic Assistance

Walid Elshamy^{1,2} Burcak Soylemez¹ Sima Sayyahmelli¹ Nese Keser¹ Mustafa K. Baskaya¹

¹Department of Neurological Surgery, University of Wisconsin-Madison School of Medicine and Public Health, Madison, Wisconsin, United States

²Department of Neurological Surgery, Ain Shams University, Faculty of Medicine, Cairo, Egypt

Address for correspondence Mustafa K. Baskaya, MD, Department of Neurological Surgery, University of Wisconsin-Madison, 600 Highland Avenue, CSC K8/828, Madison, WI 53792, United States (e-mail: m.baskaya@neurosurgery.wisc.edu).

J Neurol Surg B Skull Base 2022;83(suppl S3):e644–e645.

Abstract

Chondrosarcomas are one of the major malignant neoplasms which occur at the skull base. These tumors are locally invasive. Gross total resection of chondrosarcomas is associated with longer progression-free survival rates. The patient is a 55-year-old man with a history of dysphagia, left eye dryness, hearing loss, and left-sided facial pain. Magnetic resonance imaging (MRI) showed a giant heterogeneously enhancing left-sided skull base mass within the cavernous sinus and the petrous apex with extension into the sphenoid bone, clivus, and the cerebellopontine angle, with associated displacement of the brainstem (→ Fig. 1). An endoscopic endonasal biopsy revealed a grade-II chondrosarcoma. The patient was then referred for surgical resection. Computed tomography (CT) scan and CT angiogram of the head and neck showed a left-sided skull base mass, partial destruction of the petrous apex, and complete or near-complete occlusion of the left internal carotid artery. Digital subtraction angiography confirmed complete occlusion of the left internal carotid artery with cortical, vertebrobasilar, and leptomeningeal collateral development. The decision was made to proceed with a left-sided transcavernous approach with possible petrous apex drilling. During surgery, minimal petrous apex drilling was necessary due to autopensectomy by the tumor. Endoscopy was used to assist achieving gross total resection (→ Fig. 2). Surgery and postoperative course were uneventful. MRI confirmed gross total resection of the tumor. The histopathology was a grade-II chondrosarcoma. The patient received proton therapy and continues to do well without recurrence at 4-year follow-up. This video demonstrates steps of the combined microsurgical skull base approaches for resection of these challenging tumors.

The link to the video can be found at: https://youtu.be/WlmCP_-i57s.

Keywords

- ▶ chondrosarcoma
- ▶ endoscopic-assisted microsurgery
- ▶ cavernous sinus
- ▶ skull base
- ▶ transcavernous approach

www.thieme.com/skullbasevideos

www.thieme.com/jnlsbvideos

received
April 30, 2020
accepted after revision
January 9, 2021
published online
May 11, 2021

DOI <https://doi.org/10.1055/s-0041-1727124>.
ISSN 2193-6331.

© 2021. The Author(s).

This is an open access article published by Thieme under the terms of the Creative Commons Attribution-NonDerivative-NonCommercial-License, permitting copying and reproduction so long as the original work is given appropriate credit. Contents may not be used for commercial purposes, or adapted, remixed, transformed or built upon. (<https://creativecommons.org/licenses/by-nc-nd/4.0/>)

Georg Thieme Verlag KG, Rüdigerstraße 14, 70469 Stuttgart, Germany

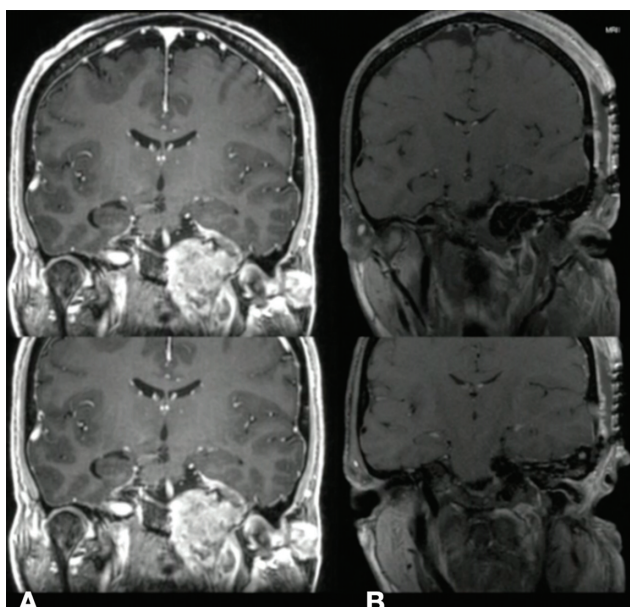


Fig. 1 (A) Preoperative coronal T1-weighted MRI with contrast shows heterogeneously enhancing lesion in the cavernous sinus extending to the posterior fossa, sphenoid sinus infratemporal fossa. (B) Post-operative T1-weighted MRI with contrast shows gross total resection of the lesion from the middle fossa, infratemporal fossa and cavernous sinus. MRI, magnetic resonance imaging.

Note

This manuscript has not been published before, either as a whole or in part, nor is it under consideration for publication elsewhere. Additionally, the authors of this manuscript report no conflicts of interest related to the manuscript, which was not financially supported by any person or institute.

Disclosure

The authors have no personal, financial, or institutional interest in any of the drugs, materials, or devices described in this article.

Conflict of Interest

None declared.

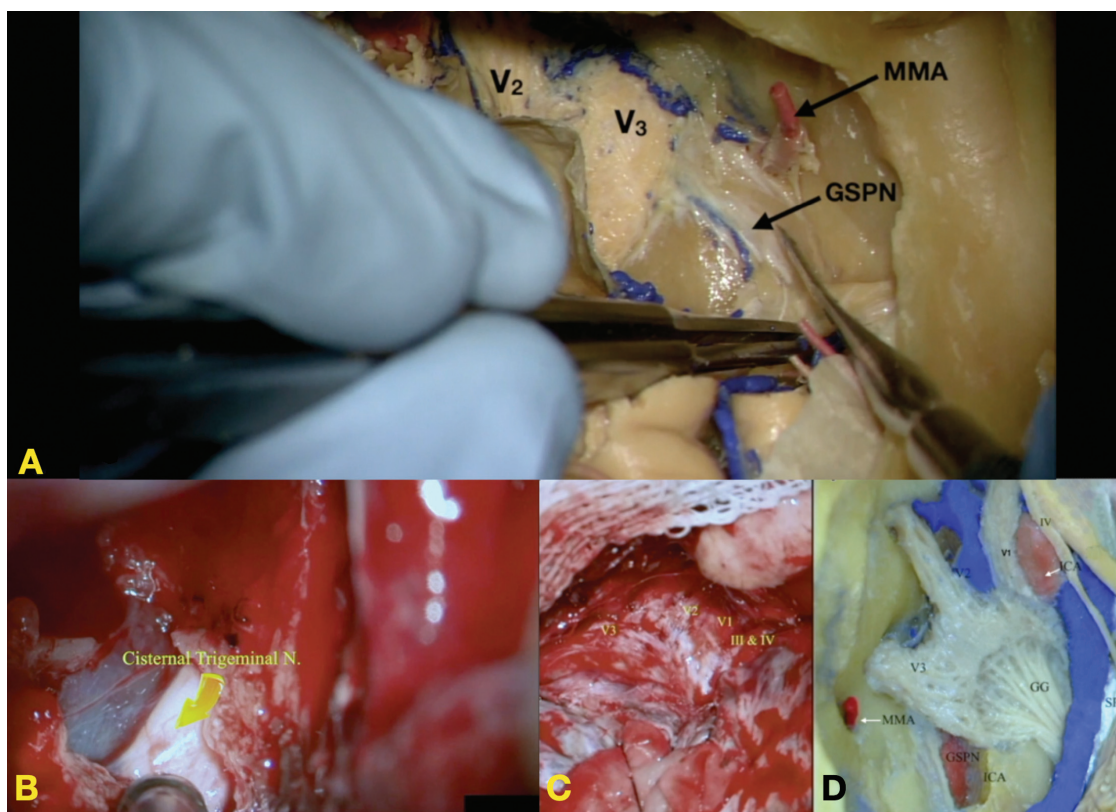


Fig. 2 Cadaveric and intraoperative photomicrographs. (A) Cadaveric dissection of the cavernous sinus and the middle cranial fossa showing middle meningeal artery (MMA), V1, V2 branches of the trigeminal nerve, and greater superficial petrosal nerve (GSPN). (B) Intraoperative image shows the cisternal segment of the trigeminal nerve after sectioning of the posterior fossa dura and tentorium and removal of the tumor. (C) Intraoperative image shows the cavernous sinus tumor splaying the branches of the trigeminal nerve including V1, V2, and V3. (D) A cadaveric dissection of the cavernous sinus showing the branches of the trigeminal nerve (V1, V2, V3), Gasserian ganglion (GG), trochlear nerve (IV), oculomotor nerve (III), and cavernous internal carotid artery (ICA) after drilling of the overlying bone, middle meningeal artery (MMA), the superior petrosal sinus (SPS), and the greater superficial petrosal nerve (GSPN).