



# Efficacy of Sacrospinous Fixation or Uterosacral Ligament Suspension for Pelvic Organ Prolapse in Stages III and IV: Randomized Clinical Trial

## *Eficácia da fixação sacroespinhal ou da suspensão do ligamento útero-sacro no prolapso de órgãos pélvicos nos estágios III e IV: Ensaio clínico randomizado*

Sérgio Brasileiro Martins<sup>1</sup> Rodrigo de Aquino Castro<sup>1</sup> Claudia Cristina Takano<sup>1</sup>   
Gisele Vissoci Marquini<sup>1</sup> Leticia Maria de Oliveira<sup>1</sup> Paulo Cezar Feldner Martins Junior<sup>1</sup>   
Márcia Maria Dias<sup>1</sup> Manoel João Batista Castello Girão<sup>1,\*</sup> Marair Gracio Ferreira Sartori<sup>1</sup>

<sup>1</sup>Department of Gynecology, Escola Paulista de Medicina, Universidade Federal de São Paulo, São Paulo, SP, Brazil

Address for correspondence: Gisele Vissoci Marquini, Departamento de Gynecologia, Escola Paulista de Medicina, Universidade Federal de São Paulo, São Paulo, SP, Brazil (e-mail: giselemarquini@gmail.com).

Rev Bras Ginecol Obstet 2023;45(10):e584–e593.

### Abstract

**Objective** To evaluate the efficacy and outcomes of the surgical treatment for pelvic organ prolapse (POP) in stages III and IV by sacrospinous ligament fixation (SSLF) or uterosacral ligament suspension (USLS) by comparing anatomical and subjective cure rates and quality-of-life parameters (through the version validated for the Portuguese language of the Prolapse Quality of Life [P-QoL] questionnaire) under two definitions: genital prolapse Ba, Bp, and C < −1 (stage I) and Ba, Bp, and C ≤ 0 (stage II).

**Materials and Methods** After we obtained approval from the Ethics Committee (under CAAE 0833/06) and registered the study in ClinicalTrials.gov (NCT 01347021), 51 patients were randomized into two groups: the USLS group (N = 26) and the SSLF group (N = 25), with follow-up 6 and 12 months after the procedures.

**Results** There was a significant improvement in the P-QoL score and anatomical measurements of all compartments in both groups after 12 months ( $p < 0.001$ ). The anatomical cure rates in the USLS and SSLF groups, considering stage 1, were of 34.6% and 40% (anterior) respectively; of 100% both for groups (apical); and of 73.1% and 92% (posterior) respectively. The rates of adverse outcomes were of 42% (N = 11) and 36% (N = 11) for the USLS and SSLF groups respectively ( $p = 0.654$ ), and those outcomes were excessive bleeding, bladder perforation (intraoperative) or gluteal pain, and urinary infection (postoperative), among others, without differences between the groups.

### Keywords

- pelvic organ prolapse
- pelvic floor disorders
- reconstructive surgical procedures
- patient health questionnaire
- patient-reported outcome measures

\* *In memoriam*.

received  
November 22, 2022  
accepted  
May 13, 2023

DOI <https://doi.org/10.1055/s-0043-1772592>.  
ISSN 0100-7203.

© 2023. Federação Brasileira de Ginecologia e Obstetrícia. All rights reserved.

This is an open access article published by Thieme under the terms of the Creative Commons Attribution License, permitting unrestricted use, distribution, and reproduction so long as the original work is properly cited. (<https://creativecommons.org/licenses/by/4.0/>)

Thieme Revinter Publicações Ltda., Rua do Matoso 170, Rio de Janeiro, RJ, CEP 20270-135, Brazil

## Resumo

### Palavras-chave

- ▶ prolapso de órgão pélvico
- ▶ distúrbios do assoalho pélvico
- ▶ procedimentos cirúrgicos reconstrutivos
- ▶ questionário de saúde da paciente
- ▶ medidas de resultados relatadas pela paciente

**Conclusion** High cure rates in all compartments were observed according to the anatomical criterion (stage I), without differences in P-QoL scores and complications either with USLS or SSLF for the surgical treatment of accentuated POP.

**Objetivo** Avaliar a eficácia e os resultados do tratamento cirúrgico para prolapso de órgãos pélvicos (POP) nos estágios III e IV, por meio da técnica de fixação do ligamento sacroespinal (FLSE) ou suspensão do ligamento útero-sacro (SLUS), ao comparar os índices de cura anatômicos, subjetivos, e os parâmetros de qualidade de vida (por meio do questionário Prolapse Quality of Life [P-QoL] validado para a língua portuguesa) sob duas definições: prolapso genital Ba, Bp e C < -1 (estágio I) e Ba, Bp e C ≤ 0 (estágio II).

**Materiais e Métodos** Após aprovação do Comitê de Ética (CAAE 0833/06) e registro no ClinicalTrials.gov (NCT 01347021), 51 pacientes foram randomizadas em dois grupos: grupo SLUS (N = 26) e (2) grupo FLSE (N = 25), com seguimento de 6 e 12 meses.

**Resultados** Houve melhora significativa nas pontuações no P-QoL e nas medidas anatômicas de todos os compartimentos em ambos os grupos após 12 meses ( $p < 0,001$ ). As taxas de cura anatômica nos grupos SLUS e FLSE, considerando o estágio 1, foram de 34,6% e 40% (anterior), respectivamente; de 100% em ambos os grupos (apical); e de 73,1% e 92% (posterior), respectivamente. As taxas de resultados adversos foram de 42% (N = 11) e 36% (N = 11), respectivamente, nos grupos SLUS e FLSE ( $p = 0,654$ ), e elas foram sangramento excessivo, perfuração da bexiga (intraoperatória) ou dor glútea, e infecção urinária (pós-operatória), entre outras, sem diferenças entre os grupos.

**Conclusão** Altas taxas de cura em todos os compartimentos foram observadas segundo critério anatômico (estágio I), sem diferença quanto às pontuações no P-QoL e às complicações tanto com SLUS quanto com FLSE para o tratamento cirúrgico de POP acentuado.

## Introduction

In high-income countries, individuals are growing ever older, and the need for pelvic organ prolapse (POP) treatment is anticipated to increase in the coming decades.<sup>1</sup> The treatment of the apical compartment is critical to the successful repair of severe POP. The two most commonly used techniques for apical corrections, through vaginal procedures, are uterosacral ligament suspension (USLS) or sacrospinous ligament fixation (SSLF).<sup>2-4</sup> Close to the ischial spines, USLS is an effective intraperitoneal procedure to restore apical support in 98% of women.<sup>5</sup> The second technique is a widely used extraperitoneal procedure with subjective cure rates ranging from 70% to 98%, and objective cure rates ranging from 67% to 97%.<sup>6</sup>

In an attempt to improve the anatomical result of pelvic reconstruction surgeries with native tissues, the use of meshes was propagated with the intention of replacing the injured native tissues, but numerous complications and high rates of reoperations due to exposure, pain, and dyspareunia have been observed.<sup>2-4,7</sup> Because of warnings about the adverse effects of surgical correction with polypropylene meshes,<sup>7</sup> efforts to identify the ideal technique to correct the apical effect by the vaginal access have been undertaken.<sup>7</sup>

Thus, medical societies specializing in such fields have recommended that meshes be used sparingly, with restrictions or not at all. It is possible that researchers in countries such as the United States, Australia, and the United Kingdom have stopped their studies on this topic because of mesh scrutiny.<sup>1,7</sup> Therefore, the objective of the present study was to compare the success rates and outcomes of USLS and SSLF in the surgical treatment of advanced apical POP (stages III and IV) under the subjective (Ba, Bp and C < -1) and anatomical (Ba, Bp and C ≤ 0) cure criteria of the Pelvic Organ Prolapse Quantification (POP-Q) System.<sup>8</sup>

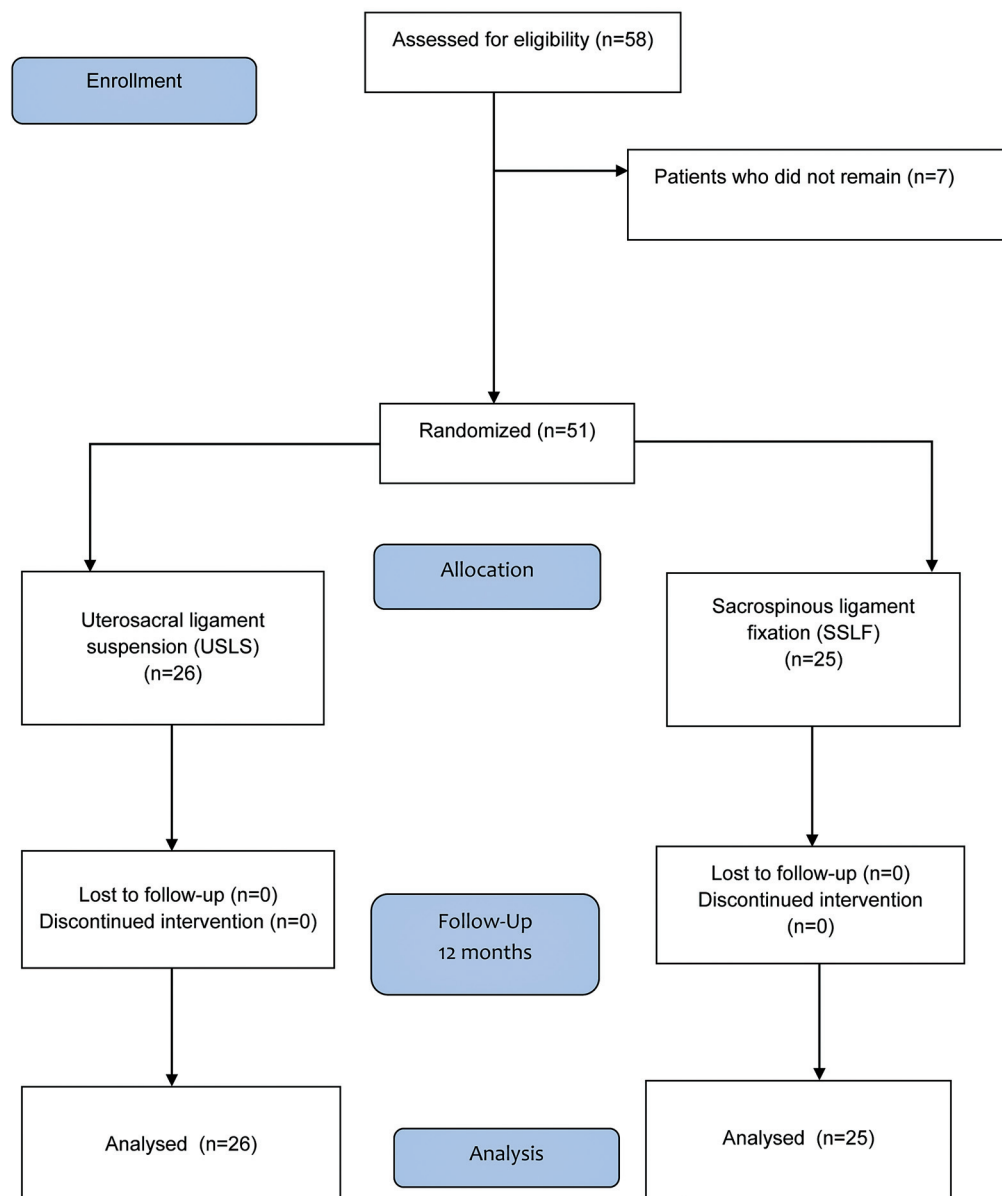
## Materials and Methods

The present prospective and randomized trial was performed at Universidade Federal de São Paulo, Brazil, and it was approved by the Research Ethics Committee of said institution (under CAAE 0833/06; CEP 0833/06 [attached document]) and registered on Clinicaltrials.gov (NCT 01347021). The inclusion criteria were patients with apical POP in stages III or IV, aged between 50 and 90 years, who voluntarily agreed to participate and signed the informed consent form. The exclusion criteria were clinico-surgical contraindications (severe comorbidities), apical POP in

stages I and II; previous pelvic radiotherapy or thromboembolic disorders; hormone therapy; endometrial hyperplasia or high-grade squamous intraepithelial lesions of the cervix, vagina, or vulva, or untreated genitourinary infection.

Standard history-taking was performed, as well as a physical examination in the supine and standing positions to stage the POP through the POP-Q according to the recommendations of the International Continence Society (ICS),<sup>8,9</sup> followed by reduction of the prolapse using gauze and a Cheron dressing forceps. The stress test was performed with and without the prolapse reduction to diagnose occult stress urinary incontinence (SUI). If involuntary leakage of urine was observed, a urodynamic study was performed to include the correction of the SUI during the surgical approach. All clinical evaluations were performed by the authors SBM and CCT through sequential randomization (performed by LMO and MMD) and allocation of the sample into two groups. The

double-blinded randomization criterion was not applied because the procedures would have had to be explained to the patient and performed by the authors (SBM, CCT, LMO and MMD) in a technically-feasible manner with the scientific rigor of sequential randomization. However, the statistician and the preoperative evaluator were blinded because they did not know to which group the patient would be assigned. The random allocation was sequential and performed 1:1 by drawing lots to avoid possible selection biases, and, in the postoperative evaluation, there was no blinding. The authors state that this does not compromise the outcomes, since the postoperative evaluator was blinded to the other randomization processes. The initial sample consisted of 58 patients with stage III and IV apical POP (according to the POP-Q). Of these, 7 were excluded (leaving 51 randomized patients) (► **Fig. 1**) because they presented stage II apical prolapse. Vaginal hysterectomy (VH) was performed in all



**Fig. 1** Flow diagram of the present study.

patients, and correction of SUI with a retropubic midurethral sling when indicated, followed by cystoscopy to assess ureteral integrity and correction of site-specific apical defects through USLS or SSLF. Nine SUI corrections were performed in the USLS group and seven in the SSLF group. All patients underwent posterior colporrhaphy and perineorrhaphy, without the need for a description of the technique, as this was not the technique under comparison in the study hypothesis. The analyses were performed using the intention-to-treat (ITT) principle. In the USLS group, the uterosacral ligaments were identified, seized with an Allis forceps ~ 1 cm medial and posterior to the ischial spine, and repaired, followed by a procedure to correct site-specific defects (in the anterior compartment). After that, the sutures of the uterosacral ligament were passed in the vaginal apex followed by anterior, posterior and perineorrhaphy or colporrhaphy.<sup>10,11</sup> In the SSFL group, correction of site-specific defects (in the anterior compartment) was performed by means of a longitudinal incision of the posterior vaginal wall up to 2 cm from the vaginal apex. Correction of the site-specific defects of the posterior vaginal wall and enterocele was performed, and the knots of polypropylene threads (number 0) were tied, leading the vaginal apex toward the sacrospinous ligament, avoiding excessive traction.<sup>10,11</sup> All patients received intravenous antibiotic therapy (cephalothin and metronidazole) intraoperatively. Meshes were not used to correct pelvic floor defects. Hospital discharge occurred at least 48 hours after surgery, provided the patients were clinically well.

Quality of life was assessed preoperatively, 6, and 12 months after the intervention through the version validated for the Portuguese language of the Prolapse Quality of Life (P-QoL) questionnaire,<sup>12</sup> which determined the criterion of subjective cure. This questionnaire contains 20 questions in 9 domains: general health perception; prolapse impact; role limitations; physical limitations; social limitations; personal relationships; emotions; sleep/energy; and severity measures.<sup>12</sup>

Anatomical success was evaluated by the positions of the vaginal apex, anterior and posterior compartments after 6 and 12 months of follow-up in the two groups. Data from 12 months of follow-up were used to assess both quality of life and the anatomical outcomes, because of the greater practical applicability of the outcomes. However, the authors consider the follow-up of patients to assess long-term efficacy, which was not the objective of the present study. For the assessment of cure ranges, two specific clinical criteria were used: according to the first criterion, those with the highest prolapse point lower than -1 according to the POP-Q were considered cured (stage I). Then, in the second criterion, patients were regrouped and considered cured when the point of greatest prolapse was  $\leq 0$ , (stage II).<sup>8</sup>

The duration of the surgery (time from the first incision to the completion of the suture) and blood loss (hemoglobin and hematocrit levels) were also analyzed pre- and postoperatively. Complications were described according to the terminology of the International Urogynecological Association (IUGA) and ICS.<sup>13</sup>

The sample size (N) was calculated based on the primary objective of the study. According to the literature review, the

authors estimated a minimum of 20 patients in each group, with a difference of 25% between them. The level of rejection of the null hypothesis was set at 0.05 or 5% ( $\alpha \leq 0.05$ ) and the power of the sample, at 80%.<sup>14</sup> The statistical analyzes were performed using the IBM SPSS Statistics for Windows (IBM Corp., Armonk, NY, United States), version 19.0, and the R software (R Foundation for Statistical Computing, Vienna, Austria), version 2.11.1. Quantitative (numerical) variables were calculated as mean, median, minimum and maximum, and standard deviation values. The qualitative (categorical) variables were analyzed by calculating their absolute and relative frequencies (percentage). The Student *t*- and Mann-Whitney tests were used to compare the continuous variables, and the Pearson Chi-squared with the Fisher exact tests, to compare the categorical variables between groups. Analysis of variance (ANOVA) was performed to compare the POP and the P-QoL score between the 2 groups before and 12 months after surgery. The significance level was set at 0.05.

## Results

The two groups were homogeneous in terms of age, age at the onset of menopause, number of pregnancies, vaginal or cesarean deliveries, body mass index (BMI), race, smoking status, systemic arterial hypertension, diabetes mellitus, initial stage, previous gynecological surgeries, presence of SUI or occult SUI (► **Table 1**). After 12 months of follow-up, a significant improvement was observed in all anatomical points after the surgeries in both groups (► **Table 2**).

In the evaluation of the compartments, separately, after 12 months of follow-up, with the adoption of anatomical healing patterns of points in a position lower than -1, anatomical cure rates of 34.6% and 40% (for the USLS and SSLF groups respectively) in the anterior compartment and of 100% for both groups in the apical compartment were observed. In the posterior compartment, anatomical healing rates of 73.1% and 92% were observed in the USLS and SSLF groups respectively, with a significant improvement in the posterior compartment (Bp) favorable to the SSLF group ( $p = 0.043$ ) (► **Tables 2 and 3**).

On the other hand, when adopting the presence of prolapse up to the hymenal caruncle as a cure criterion, that is, Ba, Bp or C  $\leq 0$ , we observed cure rates of 88.4% and 84% (for the USLS and SSLF groups respectively) in the anterior compartment, of 88.4% (USLS group) and 96% (SSLF group) in the posterior compartment, and of 100% (both groups) in the apical compartment, with no statistical difference between techniques (► **Table 3**). Therefore, when analyzing the anatomical measurements of the compartments, there was a favorable statistical difference in the SSLF group (posterior compartment), without statistical difference between the groups when analyzing the cure rates. Using the P-QoL, we observed that, after 12 months of follow-up, both procedures were efficient, with a significant improvement in scores in the nine domains evaluated regarding the postoperative and preoperative periods. There were no significant differences when comparing both groups after 12 months of follow-up (► **Table 4**).

**Table 1** Preoperative characteristics of the patients

	USLS	SSFL	<i>p</i>
<b>Age (years)</b> (min–max) ± SD	68.8 (50–88) ± 10.3	66.6 (53–80) ± 6.9	0.374 <sup>a</sup>
<b>Parity</b> (min–max) ± SD	5,0 (1–14) ± 3.4	5,4 (0–15) ± 4.0	0.648 <sup>a</sup>
<b>Vaginal deliveries</b> (min–max) ± SD	4,1 (0–14) ± 3.6	4,2 (0–12) ± 3.5	0.864 <sup>b</sup>
<b>BMI (Kg/m<sup>2</sup>)</b> (min–max) ± SD	26,2 (17.7–38.9) ± 4.7	25,8 (19.4–33.9) ± 3.2	0.760 <sup>a</sup>
<b>Race</b>			0.068 <sup>c</sup>
White	18 (69.2%)	19 (76%)	
Non-white	8 (31.8%)	6 (24%)	
<b>POP-Q stage</b>			0.312 <sup>d</sup>
III	13 (50%)	9 (36%)	
IV	13 (50%)	16 (64%)	
<b>Previous surgeries</b>	5 (19.2%)	7 (28%)	0.460 <sup>d</sup>
SUI	15 (57.8%)	16 (64%)	0.645 <sup>d</sup>
Overactive bladder	21 (80.8%)	16 (64%)	0.180 <sup>d</sup>
Occult SUI	3 (11.5%)	4 (12%)	> 0.999 <sup>c</sup>

Abbreviations: BMI, Body Mass Index; min, minimum; max, maximum; POP-Q, Pelvic Organ Prolapse Quantification System; SD, standard deviation; SSFL, sacrospinous ligament fixation; SUI, stress urinary incontinence; USLS, uterosacral ligament suspension.

Notes: <sup>a</sup>Student *t*-test for independent samples; <sup>b</sup>Mann-Whitney test; <sup>c</sup>Fisher exact test or its extension; <sup>d</sup>Pearson Chi-squared test.

**Table 2** Position of the anatomical points (POP-Q) pre- and postoperatively after 12 months in both groups

Points	USLS		SSFL		<i>p</i>
	Mean ± SD	Min/Max	Mean ± SD	Min/Max	
<b>Aa</b>					
Preop	2.77 ± 0.82	(0/3)	2.48 ± 1.23	(–1/3)	0.827
Postop	–1.15 ± 1.29	(–3/1)	–1.00 ± 1.41	(–3/1)	0.778
<i>p</i> <sup>a</sup>	< 0.001		< 0.001		
<b>Ba</b>					
Preop	4.81 ± 1.44	(1/7)	4.76 ± 2.01	(0/8)	> 0.999
Postop	–1.00 ± 1.26	(–3/1)	–0.80 ± 1.58	(–3/2)	0.791
<i>p</i> <sup>a</sup>	< 0.001		< 0.001		
<b>C</b>					
Preop	5.73 ± 1.54	(3/8)	6.56 ± 1.69	(4/10)	0.481
Postop	–5.46 ± 1.36	(–8/–2)	–5.72 ± 1.28	(–8/–3)	0.324
<i>p</i> <sup>a</sup>	< 0.001		< 0.001		
<b>GH</b>					
Preop	5.15 ± 0.97	(3/6)	4.80 ± 1.12	(3/8)	0.487
Postop	3.31 ± 0.68	(2/5)	3.44 ± 0.71	(2/5)	0.594
<i>p</i> <sup>a</sup>	< 0.001		< 0.001		
<b>PB</b>					
Preop	2.73 ± 0.67	(2/4)	3.04 ± 1.14	(2/7)	0.515
Postop	3.77 ± 0.65	(3/5)	3.80 ± 0.65	(3/5)	0.388
<i>p</i> <sup>a</sup>	< 0.001		< 0.001		

**Table 2** (Continued)

Points	USLS		SSFL		<i>p</i>
	Mean ± SD	Min/Max	Mean ± SD	Min/Max	
TVL					
Preop	8.38 ± 0.70	(7/10)	8.36 ± 0.76	(7/10)	> 0.999
Postop	7.04 ± 1.00	(5/9)	6.92 ± 1.38	(4/9)	0.951
<i>p</i> <sup>a</sup>	< 0.001		< 0.001		
Ap					
Preop	0.96 ± 1.87	(−2/3)	1.56 ± 1.85	(−3/3)	0.481
Postop	−2.19 ± 1.10	(−3/1)	−2.60 ± 0.87	(−3/0)	0.105
<i>p</i> <sup>a</sup>	< 0.001		< 0.001		
Bp					
Preop	2.08 ± 2.86	(−2/6)	3.36 ± 2.45	(−3/8)	0.141
Postop	−1.92 ± 1.41	(−3/2)	−2.48 ± 1.33	(−3/3)	0.043*
<i>p</i> <sup>a</sup>	< 0.001		< 0.001		

Abbreviations: GH, Genital Hiatus; Min, minimum; Max, maximum; PB, Perineal Body; POP-Q, Pelvic Organ Prolapse Quantification System; Postop, postoperatively; Preop, preoperatively; SD, Standard Deviation; SSFL, sacrospinous ligament fixation; TVL, Total Vaginal Length; USLS, uterosacral ligament suspension.

Notes: Values expressed in centimeters (mean  $\pm$  standard deviation, and minimum and maximum values); <sup>a</sup>Analysis of variance (ANOVA).

**Table 3** Cure rate using two different criteria of anatomical and functional cure: POP-Q < -1 or POP-Q  $\leq$  0

POP-Q	USLS (N = 26) N (%)	SSFL (N = 25) N (%)	p
Ba < -1	9 (34.6%)	10 (40.0%)	0.691 <sup>a</sup>
Ba $\leq$ 0	23 (88.4%)	21 (84.0%)	0.703 <sup>a</sup>
C < -1	26 (100.0%)	25 (100.0%)	*
C $\leq$ 0	26 (100.0%)	25 (100.0%)	*
Bp < 1	19 (73.1%)	23 (92.0%)	0.140 <sup>b</sup>
Bp $\leq$ 0	23 (88.4%)	24 (96.0%)	0.610 <sup>b</sup>

Abbreviations: POP-Q, Pelvic Organ Prolapse Quantification System; SSFL, sacrospinous ligament fixation; USLS, uterosacral ligament suspension.

Notes: <sup>a</sup>Pearson Chi-Squared test; <sup>b</sup>Fisher exact test; \*Impossibility of performing a statistical analysis for total cure in both groups.

**Table 4** Preoperative and postoperative P-QOL scores of women who underwent fixation of the vaginal vault through SSFL USLS

	USLS	SSLF	<i>p</i> <sup>a</sup>
	Mean ± SD	Mean ± SD	
General health perception			0.970
Preop	49.0 ± 26.9	52.0 ± 24.9	0.514
Postop	31.7 ± 24.0	22.0 ± 18.1	
<i>p</i> <sup>b</sup>	< 0.001	< 0.001	
Prolapse impact			0.994
Preop	74.3 ± 36.8	76.3 ± 29.6	0.739
Postop	8.9 ± 27.5	1.3 ± 6.6	
<i>p</i> <sup>b</sup>	< 0.001	< 0.001	
Role limitations			0.555
Preop	58.9 ± 38.9	47.4 ± 40.1	
Postop	7.6 ± 27.1	0.6 ± 3.3	0.171
<i>p</i> <sup>b</sup>	< 0.001	< 0.001	

(Continued)

**Table 4** (Continued)

	USLS	SSLF	<i>p</i> <sup>a</sup>
	Mean ± SD	Mean ± SD	
Physical limitations			0.444
Preop	60.9 ± 39.4	48.0 ± 42.0	0.297
Postop	5.1 ± 20.4	1.3 ± 6.6	
<i>p</i> <sup>b</sup>	< 0.001	< 0.001	
Social limitations			0.771
Preop	44.8 ± 39.8	36.8 ± 38.7	
Postop	0.9 ± 4.5	0.89 ± 4.4	0.204
<i>p</i> <sup>b</sup>	< 0.001	< 0.001	
Personal relationships			0.463
Preop	14.1 ± 30.4	24.0 ± 36.3	
Postop	1.2 ± 6.5	1.3 ± 6.6	0.371
<i>p</i> <sup>b</sup>	< 0.001	< 0.001	
Emotions			
Preop	62.8 ± 40.9	64.4 ± 37.9	> 0.999
Postop	4.7 ± 19.6	1.3 ± 22.2	0.799
<i>p</i> <sup>b</sup>	< 0.001	< 0.001	
Sleep/Energy			0.295
Preop	39.1 ± 34.2	27.1 ± 28.5	
Postop	5.7 ± 15.5	2.6 ± 10.4	
<i>p</i> <sup>b</sup>	< 0.001	< 0.001	0.146
Severity measures			0.850
Preop	43.2 ± 32.4	48.3 ± 31.5	
Postop	1.9 ± 1.3	1.3 ± 5.2	0.493
<i>p</i> <sup>b</sup>	< 0.001	< 0.001	

Abbreviations: P-QoL, Prolapse Quality of Life questionnaire; Preop, preoperative period; Postop, postoperative period; SD, standard deviation; SSLF, sacrospinous ligament fixation; USLS, uterosacral ligament suspension.

Note: <sup>a,b</sup>Analysis of variance (ANOVA).

The mean duration of the surgery was of 137.6 (range: 80 to 190) minutes in the USLS group, and of 146.9 (range: 80 to 215) minutes in the SSFL group, with no difference between them (*p* = 0.299) (► **Table 5**). There was no statistical differ-

ences between the groups regarding the minimal incidence of intraoperative or postoperative complications (► **Table 6**). Subjective cure was determined by the P-QoL, and there was no difference between the groups.

**Table 5** Comparison of perioperative results between the USLS and SSFL groups

Variables		USLS Group		SSFL Group		<i>p</i>
		Mean ± SD	Min-max	Mean ± SD	Min-max	
Operative Time (minutes)		137.6 ± 29.5	80–190	133.5 ± 33.7	80–215	0.299
Hemoglobin (g/dL)	Preop	13.1 ± 1.1	11.0–15.7	13.1 ± 1.1	10.7–15.4	0.482
	Postop	10.8 ± 1.2	8.6–13.5	11.2 ± 1.6	8.3–14.1	0.448
Hematocrit (%)	Preop	39.1 ± 3.4	34.0–47.4	39.1 ± 3.1	33.6–47.0	0.571
	Postop	32.3 ± 3.7	26.0–40.0	33.4 ± 4.7	24.7–42.6	0.415
Hospital stay (days)		2.3 ± 0.8	2.0–5.0	2.2 ± 0.8	1.0–5.0	0.559

Abbreviations: Min, minimum; max, maximum; Preop, preoperative period; Postop, postoperative period; SD, standard deviation; SSFL, sacrospinous ligament fixation; USLS, uterosacral ligament suspension.

Notes: Values expressed as mean ± standard deviation; hemoglobin and hematocrit levels collected 24 hours after surgery through analysis of variance (ANOVA) with parametric repeated measures.



**Table 6** Total number of complications in both groups

	USLS	SSLF	<i>p</i> <sup>a</sup>
<b>Intraoperative</b>			
Excessive bleeding	3	1	–
Transfusion	–	–	–
Bladder perforation	–	–	–
<b>Postoperative</b>			
Gluteal pain	–	5	–
Infection	3	1	–
De novo overactive bladder	1	–	–
Thigh paresthesia	1	–	–
Urinary infection	2	3	–
Dyspareunia	1	–	–
Rectal injury (47 <sup>th</sup> postoperative day) <sup>b</sup>	–	1	–
<b>Total</b>	<b>11</b>	<b>11</b>	<b>0.654<sup>a</sup></b>

Abbreviations: SSLF, sacrospinous ligament fixation; USLS, uterosacral ligament suspension.

Notes: <sup>a</sup>Pearson Chi-squared test; <sup>b</sup>one patient in the SSFL group had an acute abdomen on the 47th postoperative day, with a diagnosis of a perforation lesion measuring ~ 5 cm, located in the middle rectum. The patient underwent exploratory laparotomy with resection of the lesion and colostomy with reconstruction of the intestinal transit in the second stage. The anatomopathological study showed circulatory disturbance, probably due to ischemic injury.

## Discussion

The present study evaluated the two most commonly performed surgical correction techniques, one of which is the reconstruction of the pelvic anatomy using native tissues, and the degree of objective (anatomical) and subjective (functional) success in achieving satisfactory results with respect to the most current recommendations on the surgical treatment of POP.<sup>2–4,9,15,16</sup>

Systematic reviews, randomized trials and medical societies found no evidence to support the use of meshes to the detriment of native tissues.<sup>2–4,15–17</sup> Since 2011,<sup>7</sup> many transvaginal mesh products have been removed from the market after the Food and Drug Administration (FDA) announcement that identified serious safety, effectiveness concerns, and complications with the use of transvaginal mesh to treat POP. The outcomes of the present study corroborate global analyzes and recommendations on the surgical treatment for POP. Fortunately, VH and vaginal apex repair to the uterosacral or sacrospinous ligaments (which are relatively low-risk surgeries) are effective treatments for most women with apical POP, according to several authors and supported by renowned medical societies in the field, without the use of synthetic mesh.<sup>2–4,9,15,16</sup>

Studies such as the present, which prove the effectiveness of surgical treatment with the application of traditional techniques in urogynecology, such as fixation of the vaginal vault to the sacrospinous ligament or suspension of the uterosacral ligament to correct even advanced apical prolapses, reinforce the prioritization of the choice and reproducibility of the classic technique in urogynecological surgery for POP.<sup>17–20</sup> Thus, currently there is no indication

for the use of screens.<sup>17</sup> In a systematic review published in 2016, Maher et al.<sup>17</sup> found no evidence to support the use of meshes to the detriment of native tissues, which is in line with the results of the present study. The practical applicability of these results enables the advancement and dissemination of knowledge regarding surgical techniques in traditional urogynecology, without detriment to technologies, but with the deserved reservations.<sup>18–20</sup>

Regarding the cure criteria, there is no consensus in the scientific community on success and failure in POP correction surgery. Barber et al.<sup>8</sup> (2009), after a 2-year follow-up of 322 patients in the Colpopexy and Urinary Reduction Efforts (CARE) study, applied 18 different definitions of success after surgery for the correction of POP in stages II to IV, and the treatment success rate varied widely depending on the definition used (range: 19.2% to 97.2%).

In that context, the POP-Q enables more accurate descriptions of the POP stages for diagnosis and follow-up. Despite the fact that most patients are classified as stage II postoperatively, with a surgical outcome between the +1 and –1 range of the hymenal ring, they generally remain asymptomatic. Therefore, what would configure an anatomical failure (stage II according to the POP-Q) is classified as a cure according to the patient's subjective criteria, particularly when the prolapse is axial to the hymenal point.<sup>8,21,22</sup>

Based on this scenario, the results of the present study (anterior compartment), showed questionable anatomical cure rates in both groups after one year of follow-up, when considering the cure criterion points of greater POP-Q prolapse below –1 (34.6% and 40%, for USLS and SSLF groups respectively). However, when adopting the hymenal ring as a reference point for healing ( $Ba \leq 0$ ), since these patients are



asymptomatic, the cure rates were of 88.4% (USLS) and 88% (SSLF).

In the same direction, Barber et al.<sup>23</sup> (2014) compared patients in stages II to IV submitted to SSLF ( $N=186$ ) and USLS ( $N=188$ ), with 2 years of follow-up, and observed recurrence rates of 13.7% and 15.5% respectively, considering  $Ba > 0$ . Then, the results of the present study were similar to the work by Barber et al.<sup>23</sup>, who, after 2 years of follow-up, observed surgical success rates of 59.2% for uterosacral fixation and of 60.5% for sacrospinous fixation, with no difference between the two techniques.

However, Meyer et al.<sup>24</sup> (2020), when reanalyzing data from that study only with patients in stages III and IV, found anterior wall recurrence rates of 16.8% (SSLF) and 17.9% (USLS), and a high rate of patient satisfaction in both groups according to the P-QoL.

The analysis of the apical compartment after the interventions points to the restoration of the anatomy in both groups, with no significant difference. These findings corroborate those of previous studies<sup>2-4,15,16</sup> and enable us to demonstrate that both techniques yield satisfactory surgical outcomes. Choosing to ignore less-rigid cure criteria in the treatment of advanced apical prolapse can provide satisfactory anatomical and surgical outcomes for the patient, especially when native tissues are used for pelvic reconstruction.

On the other hand, in the posterior compartment, a better anatomical result was observed in the SSLF group, with a statistical difference, but no difference in terms of the subjective assessment. This was probably due to posterior deviation of the vaginal axis: the greater the area of dissection of the posterior compartment, the better the anatomical correction.<sup>24</sup>

In both groups, there was a significant decrease in the size and width of the genital hiatus after reconstruction of the posterior compartment and perineal body, which is considered a high-impact factor in surgical success and decreased recurrence. Inadequate correction of the genital hiatus can therefore impair the surgical outcome in addition to resulting in recurrence of the prolapse.<sup>25,26</sup>

This randomized design, approved by ethics committees and clinical trials platforms, highlights the methodological rigor and positive impact by offering reliability and resilience of site-specific surgical treatment in advanced POP, in a paradoxical technological appeal and numerous restrictions to synthetic meshes. Synthetic meshes may have their clinical applicability; however, it is increasingly limited due to the high rate of complications.<sup>2-4,7,9,21</sup>

The recommendation to use classic techniques for POP correction is in line with reference medical societies, such as the IUGA,<sup>9</sup> the American College of Obstetricians and Gynecologists (ACOG),<sup>2</sup> the International Federation of Gynecology and Obstetrics (Fédération Internationale de Gynécologie et d'Obstétrique, FIGO, in French),<sup>3</sup> the American Urogynecologic Society (AUGS),<sup>9</sup> as well as regulatory agencies (such as the FDA).<sup>7</sup> Besides that, the present study emphasizes a subjective criterion of cure, valued by the person most interested in the subject, the patient, without detriment to the anatomical criterion.

On the other hand, sample size and sexual function data (most patients no longer had an active sexual life) may be limitations of the present study which may not compromise the scientific quality. The authors believe that the parity of positive cure outcomes analyzed by different anatomical methods, as well as the application of the P-QoL, reinforces the data and alleviates the limitation of the sample. Besides that, due to the objective being the comparison of cure criteria, not the assessment of the superiority or inferiority of a technique, the sample was sufficient according to the statistical recommendation.

The authors point to the need for longer follow-up of patients (undergoing evaluations to provide data for future studies) with a more robust sample from multiple centers to really assess the potential for POP recurrence between the groups.

Due to the current restrictions on the use of synthetic meshes by specialized medical societies, regulatory agencies and several authors, reconstructive pelvic surgery might be moving toward a return to the classic use of native tissues, even in cases of POP in advanced stages.

## Conclusion

Both techniques (SSLF and USLS) have high success rates, good satisfactory anatomical and subjective outcomes, and a positive impact on the quality of life of patients with apical POP in stages III and IV.

## Contributions

SBM: project development, data collection, writing/proofreading/editing of the manuscript; RAC: project development, proofreading/editing of the manuscript; CCT: project development, data collection, proofreading/editing of the manuscript; GVM: proofreading/editing of the manuscript; LMO: data collection, proofreading/editing of the manuscript; PCFMJ: proofreading/editing of the manuscript; MMD: data collection, proofreading/editing of the manuscript; MJBCG: project development, proofreading/editing of the manuscript and MGFS: project development, writing/proofreading/editing of the manuscript.

## Conflict of Interests

The authors have no conflict of interests to declare.

## Acknowledgments

The authors would like to thank all patients who participated in the present study.

## References

- 1 Brown HW, Hegde A, Huebner M, Neels H, Barnes HC, Marquini GV, et al. International urogynecology consultation chapter 1 committee 2: Epidemiology of pelvic organ prolapse: prevalence, incidence, natural history, and service needs. *Int Urogynecol J Pelvic Floor Dysfunct.* 2022;33(02):173–187. Doi: 10.1007/s00192-021-05018-z
- 2 The American College of Obstetricians and Gynecologists (ACOG) Pelvic Organ Prolapse: ACOG Practice Bulletin, Number 214. *Obstet Gynecol.* 2019;134(05):e126–e142. Doi: 10.1097/AOG.00000000000003519

- 3 Ugianskiene A, Davila GW, Su THFIGO Urogynecology and Pelvic Floor Committee. FIGO review of statements on use of synthetic mesh for pelvic organ prolapse and stress urinary incontinence. *Int J Gynaecol Obstet.* 2019;147(02):147–155. Doi: 10.1002/ijgo.12932
- 4 This document was developed by the American Urogynecologic Society (AUGS) Guidelines and Statements Committee with assistance of Cassandra L. Carberry, MD, Paul K. Tulikangas, Beri M. Ridgeway, Sarah A. Collins, and Rony A. Adam. This peer-reviewed document reflects clinical and scientific advances as of the date issued and is subject to change. The information should not be construed as dictating an exclusive course of treatment or procedure to be followed. Its content is not intended to be a substitute for professional medical judgment, diagnosis or treatment. The ultimate judgment regarding any specific procedure or treatment is to be made by the physician and patient in light of all circumstances presented by the patient. American Urogynecologic Society Best Practice Statement: Evaluation and Counseling of Patients With Pelvic Organ Prolapse. *Female Pelvic Med Reconstr Surg.* 2017;23(05):281–287 Doi: 10.1097/SPV.0000000000000424 Erratum in: *Female Pelvic Med Reconstr Surg.* 2018 May/June;24(3):256. PMID: 28846554
- 5 Margulies RU, Rogers MA, Morgan DM. Outcomes of transvaginal uterosacral ligament suspension: systematic review and meta-analysis. *Am J Obstet Gynecol.* 2010;202(02):124–134. Doi: 10.1016/j.ajog.2009.07.052
- 6 Petri E, Ashok K. Sacrospinous vaginal fixation—current status. *Acta Obstet Gynecol Scand.* 2011;90(05):429–436. Doi: 10.1111/j.1600-0412.2011.01084.x
- 7 U.S. Food and Drug Administration. FDA takes action to protect women's health, orders manufacturers of surgical mesh intended for transvaginal repair of pelvic organ prolapse to stop selling all devices. Silver Spring (MD): FDA; 2019. Available at: <https://www.fda.gov/NewsEvents/Newsroom/PressAnnouncements/ucm636114.htm> Retrieved July 17, 2019
- 8 Barber MD, Brubaker L, Nygaard I, Wheeler TL 2nd, Schaffer J, Chen Z, et al; Pelvic Floor Disorders Network. Defining success after surgery for pelvic organ prolapse. *Obstet Gynecol.* 2009;114(03):600–609. Doi: 10.1097/AOG.0b013e3181b2b1ae
- 9 Haylen BT, de Ridder D, Freeman RM, Swift SE, Berghmans B, Lee J, et al; International Urogynecological Association International Continence Society. An International Urogynecological Association (IUGA)/International Continence Society (ICS) joint report on the terminology for female pelvic floor dysfunction. *Neurourol Urodyn.* 2010;29(01):4–20. Doi: 10.1002/nau.20798
- 10 Morley GW, DeLancey JO. Sacrospinous ligament fixation for eversion of the vagina. *Am J Obstet Gynecol.* 1988;158(04):872–881
- 11 Shull BL, Bachofen C, Coates KW, Kuehl TJ. A transvaginal approach to repair of apical and other associated sites of pelvic organ prolapse with uterosacral ligaments. *Am J Obstet Gynecol.* 2000;183(06):1365–1373, discussion 1373–1374
- 12 Digesu GA, Khullar V, Cardozo L, Robinson D, Salvatore S. P-QOL: a validated questionnaire to assess the symptoms and quality of life of women with urogenital prolapse. *Int Urogynecol J Pelvic Floor Dysfunct.* 2005;16(03):176–181, discussion 181. Doi: 10.1007/s00192-004-1225-x
- 13 Haylen BT, Freeman RM, Swift SE, Cosson M, Davila GW, Deprest J, et al. An International Urogynecological Association (IUGA)/International Continence Society (ICS) joint terminology and classification of the complications related directly to the insertion of prostheses (meshes, implants, tapes) & grafts in female pelvic floor surgery. *Int Urogynecol J Pelvic Floor Dysfunct.* 2011;22(01):3–15. Doi: 10.1007/s00192-010-1324-9
- 14 Schulz KF, Grimes DA. Sample size calculations in randomised trials: mandatory and mystical. *Lancet.* 2005;365(9467):1348–1353. Doi: 10.1016/S0140-6736(05)61034-3
- 15 Barber MD, Brubaker L, Burgio KL, Richter HE, Nygaard I, Weidner AC, et al; Eunice Kennedy Shriver National Institute of Child Health and Human Development Pelvic Floor Disorders Network. Comparison of 2 transvaginal surgical approaches and perioperative behavioral therapy for apical vaginal prolapse: the OPTIMAL randomized trial. [published erratum appears in *JAMA* 2015;313:2287] *JAMA.* 2014;311(10):1023–1034
- 16 Larson KA, Smith T, Berger MB, Abernethy M, Mead S, Fenner DE, et al. Long-term patient satisfaction with michigan four-wall sacrospinous ligament suspension for prolapse. *Obstet Gynecol.* 2013;122(05):967–975
- 17 Maher C, Feiner B, Baessler K, Christmann-Schmid C, Haya N, Brown J. Surgery for women with apical vaginal prolapse. *Cochrane Database Syst Rev.* 2016;10(10):CD012376. Doi: 10.1002/14651858.CD012376
- 18 Morgan DM, Larson K. Uterosacral and sacrospinous ligament suspension for restoration of apical vaginal support. *Clin Obstet Gynecol.* 2010;53(01):72–85. Doi: 10.1097/GRF.0b013e3181cf2d51
- 19 Diwadkar GB, Barber MD, Feiner B, Maher C, Jelovsek JE. Complication and reoperation rates after apical vaginal prolapse surgical repair: a systematic review. *Obstet Gynecol.* 2009;113(2 Pt 1):367–373. Doi: 10.1097/AOG.0b013e318195888d Erratum in: *Obstet Gynecol.* 2009 June;113(6):1377. PMID: 19155908
- 20 Weber AM, Walters MD, Piedmonte MR, Ballard LA. Anterior colporrhaphy: a randomized trial of three surgical techniques. *Am J Obstet Gynecol.* 2001;185(06):1299–1304, discussion 1304–1306. Doi: 10.1067/mob.2001.119081
- 21 Samuelsson EC, Victor FT, Tibblin G, Svärdsudd KF. Signs of genital prolapse in a Swedish population of women 20 to 59 years of age and possible related factors. *Am J Obstet Gynecol.* 1999;180(2 Pt 1):299–305. Doi: 10.1016/S0002-9378(99)70203-6
- 22 Nygaard I, Barber MD, Burgio KL, Kenton K, Meikle S, Schaffer J, et al; Pelvic Floor Disorders Network. Prevalence of symptomatic pelvic floor disorders in US women. *JAMA.* 2008;300(11):1311–1316. Doi: 10.1001/jama.300.11.1311
- 23 Barber MD, Brubaker L, Burgio KL, Richter HE, Nygaard I, Weidner AC, et al; Eunice Kennedy Shriver National Institute of Child Health and Human Development Pelvic Floor Disorders Network. Comparison of 2 transvaginal surgical approaches and perioperative behavioral therapy for apical vaginal prolapse: the OPTIMAL randomized trial. *JAMA.* 2014;311(10):1023–1034. Doi: 10.1001/jama.2014.1719 Erratum in: *JAMA.* 2015 Jun 9;313(22):2287. PMID: 24618964; PMCID: PMC4083455
- 24 Meyer I, Whitworth RE, Lukacz ES, Smith AL, Sung VW, Visco AG, et al; NICHHD Pelvic Floor Disorders Network and the National Institutes of Health Office of Research on Women's Health. Outcomes of native tissue transvaginal apical approaches in women with advanced pelvic organ prolapse and stress urinary incontinence. *Int Urogynecol J Pelvic Floor Dysfunct.* 2020;31(10):2155–2164. Doi: 10.1007/s00192-020-04271-y
- 25 Delancey JO, Hurd WW. Size of the urogenital hiatus in the levator ani muscles in normal women and women with pelvic organ prolapse. *Obstet Gynecol.* 1998;91(03):364–368. Doi: 10.1016/S0029-7844(97)00682-0
- 26 Vaughan MH, Siddiqui NY, Newcomb LK, Weidner AC, Kawasaki A, Visco AG, Bradley MS. Surgical Alteration of Genital Hiatus Size and Anatomic Failure After Vaginal Vault Suspension. *Obstet Gynecol.* 2018;131(06):1137–1144. Doi: 10.1097/AOG.0000000000002593