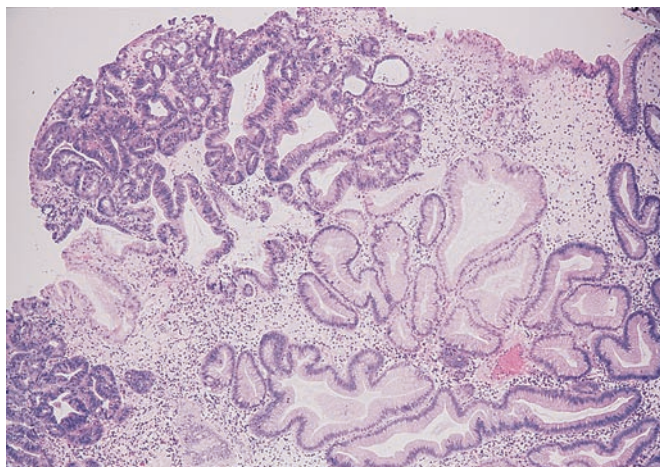


# Gastric Intramucosal Carcinoma in a Small Hyperplastic Foveolar Polyp



**Figure 1** In this patient, upper gastrointestinal endoscopy revealed a 6-mm sessile elevated lesion in the greater curvature of the middle gastric body. The surface of the lesion was lobulated, and an erosion was noticed on the top. It was removed by electrosurgical snare polypectomy.



**Figure 2** A photomicrograph of the resected specimen showed hyperplasia of the gastric foveolae. In addition, a focal intramucosal well-differentiated adenocarcinoma was visible in the left part of the lesion (hematoxylin and eosin;  $\times 20$ ). The incidence of carcinoma found in hyperplastic foveolar polyps is reported to be between 0% and 6.1%, and the development of cancer in hyperplastic polyps that are smaller than 1 cm is particularly rare.

**A. Okano, H. Takakuwa, Y. Matsubayashi**  
Department of Gastroenterology, Tenri  
Hospital, Nara, Japan

## Corresponding Author

**A. Okano, M.D.**  
Department of Gastroenterology, Tenri  
Hospital  
200 Mishima-cho  
Tenri  
Nara 632-8552  
Japan  
Fax: +81-743-625576  
E-mail: okano-a@tenriyoroze-hp.or.jp