

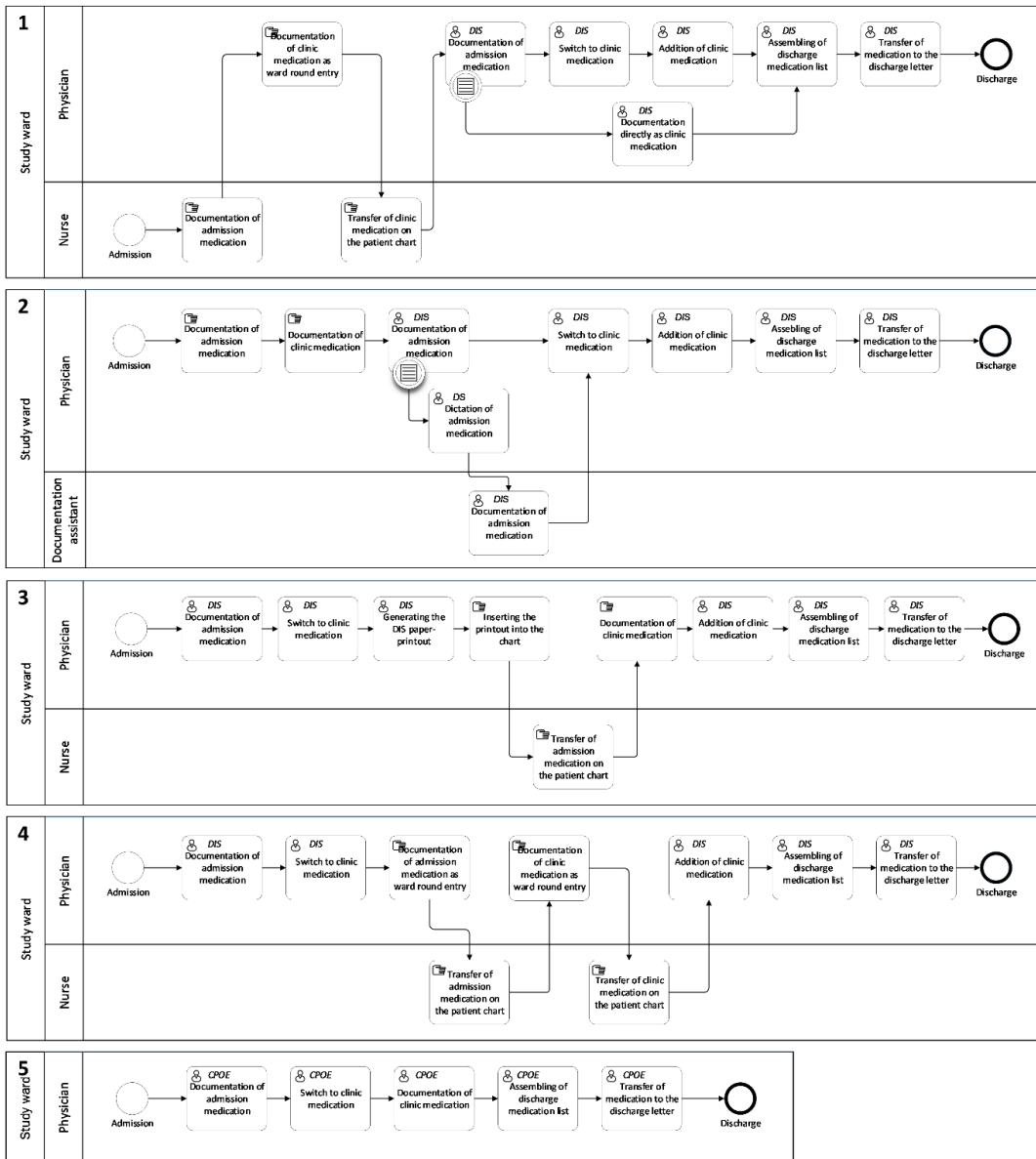
**Supplementary Material:**

Jungreithmayr V et al. A multicentre evaluation of the impact of computerised physician order entry (CPOE) on medication documentation workflow, time, and quality. *Methods Inf Med.* 2025

**Supplement 1: Interview guide**

- Admission
  - type of admission (elective, emergency, etc.): Does medication documentation differ according to the type of admission?
  - documentation of admission medication: when?, which information is being documented (drugs, allergies, diagnoses, etc.)?, where (paper chart, electronic system, etc.)?, who (physicians, nurses, others)?, are medication orders documented twice/several times?
  - switch to hospital formulary drugs: how is this done?, is an electronic system used?, who is performing the switch?
  - dissemination of information: how (written, face-to-face, by telephone)?
- Inpatient stay
  - changes to medications or procedures: where are these documented (paper chart, electronic system, etc.)?, when?, what is triggering documentation (ward round, communication by nurses, etc.)?, what kind of ward rounds are performed?
  - dissemination of information: how (written, face-to-face, by telephone)?, is feedback given when an order is processed?
- Discharge
  - documentation of discharge medication: where (electronic system, physician letter, etc.)?, how is information on inpatient medication changes collected?, is the federal standard medication plan printed?

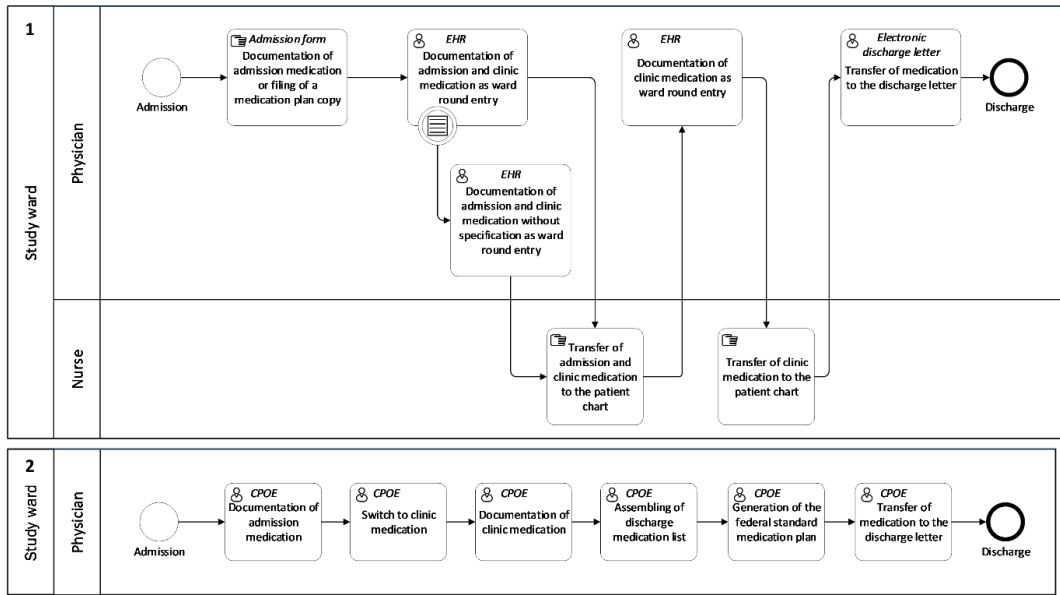
Supplement 2: Process flowcharts



Supplement 2.a: Workflows at hospital A (workflows without CPOE: 1 – 4, workflow with CPOE: 5)

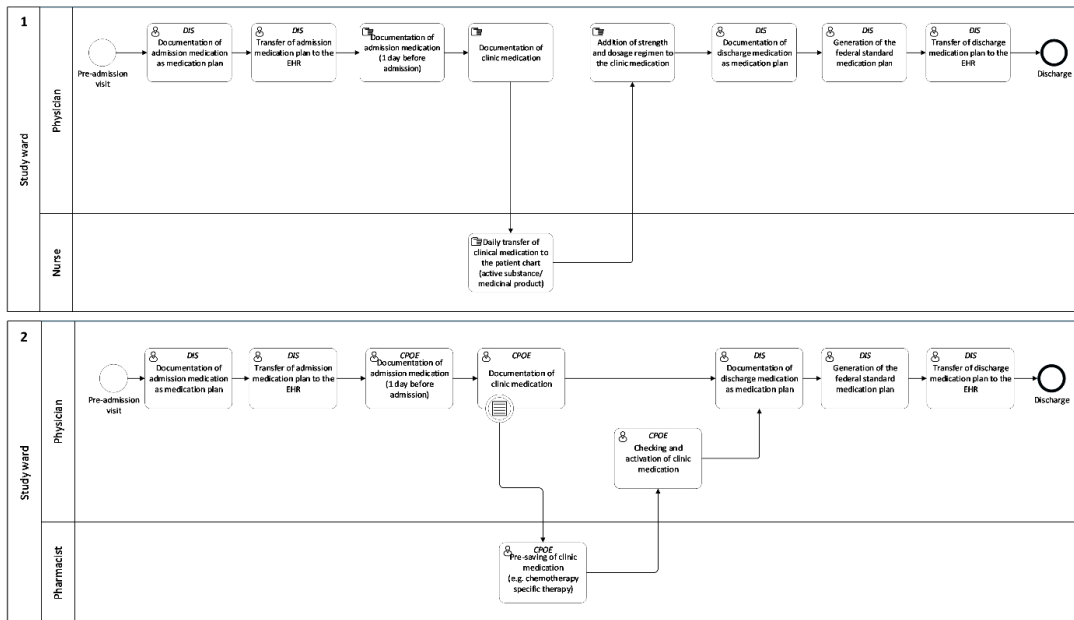
CPOE: computerized physician order entry, DIS: drug information system, DS: dictation software, ○ : start event, □ : manual task (patient chart), □ : user task, ⊞ : intermediate conditional event, ○ : end event.

As published in: Jungreithmayr V, Haefeli WE, Seidling HM. Workflow, Time Requirement, and Quality of Medication Documentation with or without a Computerized Physician Order Entry System-A Simulation-Based Lab Study. *Methods Inf Med.* 2023;62(1-02):40-48



**Supplement 2.b: Workflows at hospital B (workflow without CPOE: 1, workflow with CPOE: 2)**

CPOE: computerized physician order entry, EHR: electronic health record, ○: start event, →: sequence flow, □: manual task (patient chart), □: user task, ⊞: intermediate conditional event, ⊙: end event.



**Supplement 2.c: Workflows at hospital C (workflow without CPOE: 1, workflow with CPOE: 2)**

CPOE: computerized physician order entry, DIS: drug information system, ○: start event, →: sequence flow, □: manual task (patient chart), □: user task, ⊞: intermediate conditional event, ⊙: end event.