

Caroli's disease associated with biliary papillomatosis and cholangiolithiasis

A 52-year-old man presented with constant right upper quadrant pain and repeated episodes of fever for 6 months, accompanied with cutaneous and scleral icterus. Laboratory tests suggested a rise in bilirubin. A computed tomography (CT) scan showed obvious dilatation of the intra- and extrahepatic bile ducts, and patchy high density shadows in the intrahepatic bile ducts that were thought to be stones (► **Fig. 1**).

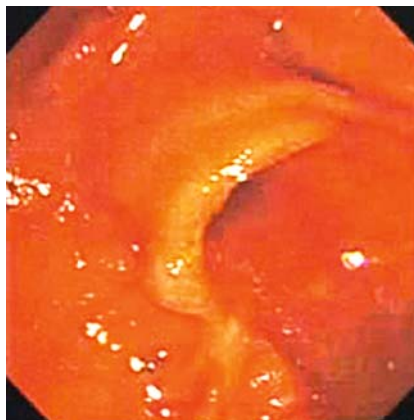
Duodenoscopy showed that the orifice of the duodenal papilla was shaped like the mouth of a fish and a large amount of mucus was expelled (► **Fig. 2**). T-tube cholangiography confirmed the dilated hepatic bile ducts (► **Fig. 3**). The patient then underwent biliary exploration. During surgery, a large amount of mucus could be seen in the bile duct, and the T-tube was indwelling in the common bile duct. After the surgery, the patient still had abdominal pain, the T-tube drainage was problematic with mucus discharge observed, and there was no significant regression of the jaundice.

The patient underwent cholangioscopy 6 weeks after surgery, which showed diffuse and labyrinth-like dilatation of the intrahepatic bile ducts (► **Fig. 4a**), which was thought to be Caroli's disease with cholangiolithiasis. Diffuse papillary protrusions could be seen on the intrahepatic bile duct wall, with a large amount of mucus (► **Fig. 4b**). A biopsy was taken, which subsequently confirmed the diagnosis of biliary papillomatosis (► **Fig. 5**). Most of the stones were removed under cholangioscopy (► **Video 1**). After stone extraction, the patient's abdominal pain was relieved and the degree of jaundice gradually decreased.

Caroli's disease is a rare autosomal recessive disorder, which leads to intrahepatic stones and recurrent cholangitis when progressive. It is characterized by a biliary abnormality consisting of segmental saccular dilatations of the large intrahepatic bile ducts [1, 2]. Biliary papillomatosis is also a rare disease entity with



► **Fig. 1** Computed tomography scan showing obvious dilatation in the intra- and extrahepatic bile ducts, along with patchy high density shadows in the intrahepatic bile ducts that were thought to be stones.



► **Fig. 2** Duodenoscopy image showing the orifice of the duodenal papilla, which was shaped like the mouth of a fish.

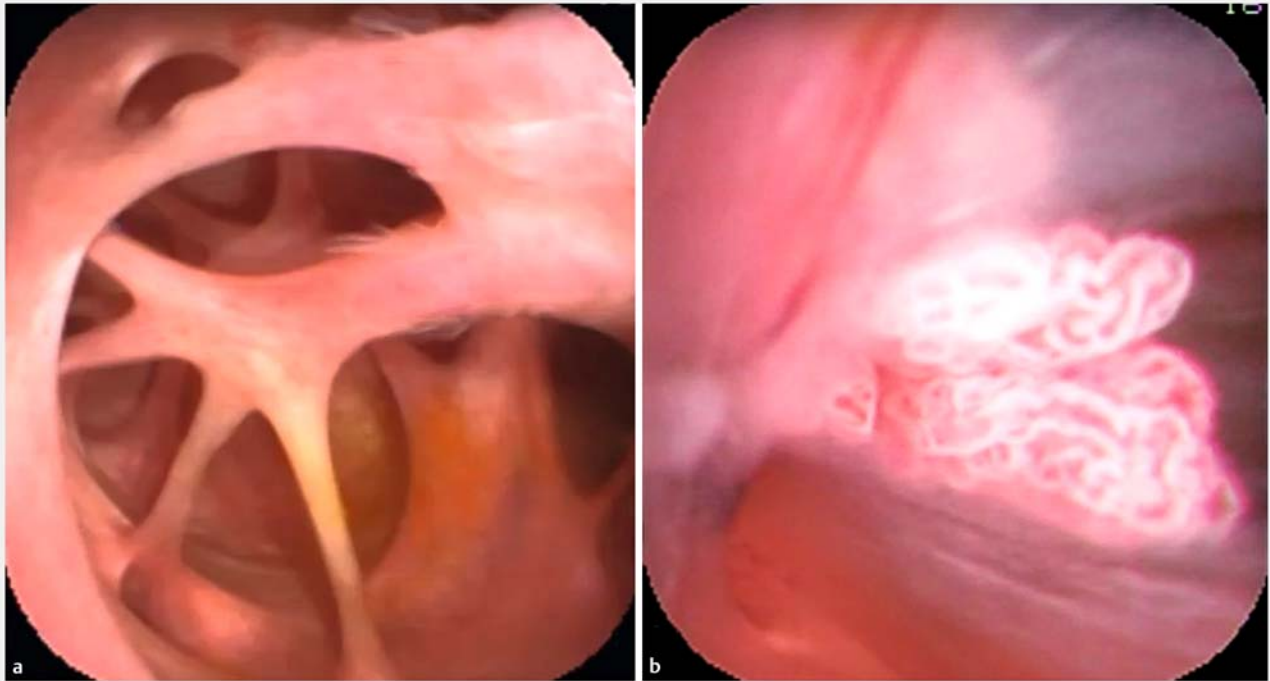


► **Fig. 3** T-tube cholangiogram showing dilatation of the intra- and extrahepatic bile ducts.

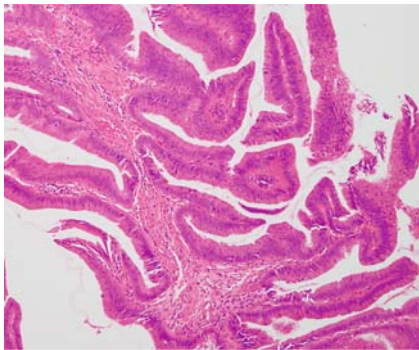
a strong malignant potential, which is characterized by multiple papillary adenomas involving both the intrahepatic and extrahepatic biliary tree [3]. This patient had a wide range of lesions due to papillomas, which could not be comple-

tely resected. The only complete and effective treatment for this condition is liver transplantation [4].

Endoscopy_UCTN_Code_CCL_1AZ_2AZ



► **Fig. 4** Cholangioscopic views showing: **a** diffuse and labyrinth-like dilatation of the intrahepatic bile duct; **b** a large amount of mucus and diffuse papillary protrusions within the intrahepatic bile ducts.



► **Fig. 5** Histology of the biopsy specimen showing biliary papillomatosis.



► **Video 1** Cholangioscopy showing diffuse dilatation of the intrahepatic bile ducts, with a large amount of mucus and cholangiolithiasis. A biopsy is taken and stones are extracted.

Competing interests

None

The authors

Chi Yuan^{*}, Jianrong Liu^{*}, Xianghong Zhou, Chuncheng Wu

Department of Gastroenterology, West China Hospital, Sichuan University, Chengdu, China

^{*} Chi Yuan and Jianrong Liu are considered co-first authors of this work.

Corresponding author

Chuncheng Wu, MD

Department of Gastroenterology, West China Hospital, Sichuan University, No. 37 Guo Xue Alley, Chengdu 610041, Sichuan Province, China
hxwucc@163.com

References

- [1] Millwala F, Segev DL, Thuluvath PJ. Caroli's disease and outcomes after liver transplantation. *Liver Transpl* 2008; 14: 11–17
- [2] Kassahun WT, Kahn T, Wittekind C et al. Caroli's disease: liver resection and liver transplantation. Experience in 33 patients. *Surgery* 2005; 138: 888–898
- [3] Vassiliou I, Kairivassilatou E, Marinis A et al. Malignant potential of intrahepatic biliary papillomatosis: a case report and review of the literature. *World J Surg Oncol* 2006; 4: 71
- [4] Dumortier J, Scoazec JY, Valette PJ et al. Successful liver transplantation for diffuse biliary papillomatosis. *J Hepatol* 2001; 35: 542–543

Bibliography

DOI <https://doi.org/10.1055/a-0640-2859>
Published online: 3.7.2018
Endoscopy 2018; 50: E276–E278
© Georg Thieme Verlag KG
Stuttgart · New York
ISSN 0013-726X

ENDOSCOPY E-VIDEOS

<https://eref.thieme.de/e-videos>



Endoscopy E-Videos is a free access online section, reporting on interesting cases and new techniques in gastroenterological endoscopy. All papers include a high quality video and all contributions are freely accessible online.

This section has its own submission website at <https://mc.manuscriptcentral.com/e-videos>