

SARS-CoV-2/COVID-19: Evidence-Based Recommendations on Diagnosis and Therapy

SARS-CoV-2/COVID-19: Empfehlungen zu Diagnostik und Therapie




Authors

Berthold Bein¹, Martin Bachmann², Susanne Huggett³, Petra Wegermann⁴

Affiliations

- 1 Klinik für Anästhesiologie, Intensivmedizin, Notfallmedizin und Schmerztherapie der Asklepios Klinik St. Georg, Hamburg, Germany
- 2 Klinik für Intensivmedizin und Beatmungsmedizin, Asklepios Klinikum Harburg, Harburg, Germany
- 3 Krankenhaushygiene der Asklepios Kliniken, Hamburg, Germany
- 4 Asklepios Klinik Weißenfels, Weißenfels, Germany

Key words

SARS-CoV-2, COVID-19, critical care, adult respiratory distress syndrome, acute lung injury, personal protection equipment, N95 respiratory masks

Schlüsselwörter


SARS-CoV-2, COVID-19, Intensivtherapie, ARDS, akutes Lungenversagen, persönliche Schutzausrüstung, FFP3

Bibliography

DOI <https://doi.org/10.1055/a-1156-3991>
Geburtsh Frauenheilk 2020; 80: 491–498 © Georg Thieme Verlag KG Stuttgart · New York | ISSN 0016-5751

Correspondence

Prof. Dr. med. Berthold Bein
Klinik für Anästhesiologie, Intensivmedizin, Notfallmedizin und Schmerztherapie, Asklepios Klinik St. Georg
Lohmühlenstraße 5, 20099 Hamburg, Germany
b.bein@asklepios.com

 Deutsche Version unter:
<https://doi.org/10.1055/a-1156-3991>

ABSTRACT

COVID-19, a new viral disease affecting primarily the respiratory system and the lung, has caused a pandemic posing serious challenges to healthcare systems around the world. In about 20% of patients, severe symptoms occur after a mean incubation period of 5–6 days; 5% of patients need intensive

care therapy. Mortality is about 1–2%. Protecting healthcare workers is of paramount importance in order to prevent hospital-acquired infections. Therefore, during all procedures associated with aerosol production, personal protective equipment consisting of a FFP2/FFP3 (N95) respiratory mask, gloves, safety glasses and a waterproof overall should be used. Therapy is based on established recommendations issued for patients with acute lung injury (ARDS). Lung protective ventilation, prone position, restrictive fluid management and adequate management of organ failure are the mainstays of therapy. In case of fulminant lung failure, veno-venous extracorporeal membrane oxygenation may be used as a rescue in experienced centres. New, experimental therapies are evolving with ever increasing frequency; currently, however, no evidence-based recommendation is possible. If off-label and compassionate use of these drugs is considered, an individual benefit-risk assessment is necessary, since serious side effects have been reported.

ZUSAMMENFASSUNG

COVID-19 ist eine neue Viruserkrankung, die primär die Atemwege und Lungen befällt; sie hat eine weltweite Pandemie ausgelöst und stellt eine ernste Herausforderung für die Gesundheitssysteme auf der ganzen Welt dar. Nach einer mittleren Inkubationszeit von 5–6 Tagen kommt es bei ca. 20% der Patienten zu einem schweren Krankheitsverlauf; rund 5% der Patienten benötigen Intensivtherapie. Die Letalität beträgt rund 1–2%. Ein adäquater Schutz des medizinischen Personals ist essenziell, um im Krankenhaus erworbene Infektionen vorzubeugen. Bei allen Aerosol produzierenden Maßnahmen ist daher eine Schutzausrüstung mit FFP2/FFP3-Maske, Schutzbrille und flüssigkeitsdichtem Kittel zu tragen. Die Therapie intensivpflichtiger Patienten mit Lungenversagen basiert auf den etablierten Empfehlungen zur Behandlung von Patienten mit ARDS. Lungenprotektive Ventilation, Lagerungstherapie, restriktive Flüssigkeitsgabe und adäquate Beherrschung weiterer Organinsuffizienzen stehen hier im Mittelpunkt. Wenn Patienten mit akutem Lungenversagen eine Notfallbehandlung mittels venovenöser extrakorporaler Membranoxygenierung benötigen, sollte die Behandlung in erfahrenen Zentren durchgeführt werden. Neue und experi-

mentelle Therapieoptionen werden zunehmend diskutiert; evidenzbasiert kann aber für keine dieser Therapien derzeit eine Empfehlung ausgesprochen werden. In jedem Fall ist vor

Verwendung einer Substanz als Off-Label Use eine individuelle Nutzen-Risiko-Abwägung erforderlich, da auch die jeweiligen Nebenwirkungen beachtet werden müssen.

Abbreviations

ARDS	acute respiratory distress syndrome
COVID-19	corona virus disease 2019
CRP	C-reactive protein
ECMO	extracorporeal membrane oxygenation
EI	endotracheal intubation
FFP2/FFP3	filtering face piece (protection classes 2/3)
IL	interleukin
LDH	lactate dehydrogenase
NIV	non-invasive ventilation
NSAID	nonsteroidal anti-inflammatory drug
PPE	personal protective equipment
RKI	Robert Koch Institute
RT-PCR	reverse transcriptase polymerase chain reaction
SARS-CoV-2	severe acute respiratory syndrome-coronavirus 2
SSC	Surviving Sepsis Campaign
TNF	tumour necrosis factor

Introduction

The new coronavirus, known as SARS-CoV-2 (severe acute respiratory syndrome-coronavirus 2), has caused a global pandemic within a short period of time. The clinical presentation, i.e., the disease itself, has been given the name COVID-19 (corona virus disease 2019). Since the initial period of transmission of infections, the number of infections reported in the People's Republic of China and in numerous European countries has risen exponentially [1] and significantly exceeded the capacity of healthcare systems in certain countries such as Italy. Physicians and nursing staff are therefore in urgent need of information about efficient ways of diagnosing the disease and evidence-based treatment.

Epidemiology

It is currently assumed that SARS-CoV-2 was present in an animal reservoir (the market for seafood and reptiles in Wuhan, People's Republic of China) from where it passed to human hosts at the beginning of December 2019 [2]. The original reservoir species is still unknown, but bats are considered the most likely source [3]. With Wuhan as the starting point, the virus spread across all of mainland China, with a significant concentration of cases occurring in the province of Hubei [4].

Initially, the number of infections in all affected countries increased exponentially, although the curve has since flattened following drastic measures taken by some countries to avoid social contacts (People's Republic of China, Taiwan, Singapore) [5]. The characteristic exponential infection curve is due to SARS-CoV-2 being highly contagious. Based on a meta-analysis of 12 studies published until 7 February 2020, the mean basic reproduction

number for SARS-CoV-2 is currently 3.28 infections per infected individual, a considerably higher number than that of SARS.

Data from China suggested, that every infected individual infects an average of 3.28 other people [6].

According to current calculations, the case fatality rate (= the number of infected persons who die of the infection; lethality) of SARS-CoV-2 is just 1.4%, although the risk of developing symptomatic infection increases with age (approx. 4% per year for adults between the ages of 30–60 years) [7]. Patients over the age of 59 years have a 5-fold higher risk of dying from COVID-19. Children are often not affected or only to a minor extent, but they can pass on the infection. It is currently not expected that large numbers of children will be seriously affected [8].

The average incubation period is about 5–6 days (range: 0–14 days). However, the virus is still detectable in infected persons up to 30 days from onset of illness, which makes it more difficult to classify asymptomatic patients as cured even if they appear to have recovered from the infection [9].

There is currently insufficient evidence to be able to say whether persons who had the disease develop immunity and how long this immunity persists [10]. Data from animal studies suggest that, as with other viral diseases, infected individuals do develop immunity which subsequently prevents clinically apparent reinfection [11].

Clinical Characteristics

COVID-19 is primarily an infection of the upper and lower respiratory tract. The efficient proliferation of the virus within the nasopharyngeal cavity is considered one of the reasons for the high contagiousness of the virus [12]. Otherwise, the clinical characteristics of SARS-CoV-2 resemble those of other viral diseases which affect the lungs: fever, cough, fatigue.

According to data from the People's Republic of China, more than 80% of affected patients are asymptomatic or present with only mild symptoms, around 15% develop more serious general symptoms including pneumonia, and around 5% of patients become critically ill and develop sepsis, septic shock or multi-organ failure [13–18] (► **Table 1**). The lethality is between 1–2%. Men are affected significantly more often than women [16,23]. The figures may vary, depending on the intensity and time of testing. This appears to be the case in Italy.

Critically ill patients present with the classic features of ARDS including hyaline membrane formation, consolidated areas in the lungs and atelectasis [19]. Images of the thorax obtained with computed tomography show ground-glass opacity in more than 50% of cases and bilateral shadows [16]; bilateral shadowing was also found in > 50% of cases with conventional X-ray imaging [20].

On admission to hospital, more than 80% of patients were found to have lymphocytopenia; laboratory tests in a cohort of 173 patients from Wuhan with severe disease showed elevated

► **Table 1** Classification of symptoms and severity in persons with COVID-19 (data from [18]).

Severity	Symptoms
Mild (outpatient/ normal ward)	Fever Cough Fatigue
Severe (IMC = intermediate care)	Dyspnoea Respiratory rate $\geq 30/\text{min}$ $\text{SaO}_2 \leq 93\%$ $\text{paO}_2/\text{FiO}_2 < 300$ Lung infiltrates $> 50\%$ within 24–48 h
Critically ill (ICU = intensive care unit)	Lung failure Septic shock Multi-organ failure

CRP ($\geq 10 \text{ mg/l}$, 81.5%), LDH ($\geq 250 \text{ U/l}$, 58.1%) and D-dimer ($\geq 0.5 \text{ mg/l}$, 59.8%) levels in a majority of patients, while only 13.7% of patients had elevated procalcitonin levels of more than $\geq 0.5 \text{ ng/l}$ [16]. Elevated D-dimer and serum ferritin levels have also been reported in other cohorts [21, 22].

In general, it appears that older men with comorbidities are more likely to fall ill and more likely to die.

Around half of patients with COVID-19 have chronic comorbidities; the majority have cardiovascular or cerebrovascular comorbidities or diabetes mellitus [23]. Some patients with severe course of disease had coinfections with bacteria and fungi. Examination of cultures has identified *Acinetobacter baumannii*, *Klebsiella pneumoniae*, *Aspergillus flavus*, *Candida glabrata* and *Candida albicans* among others [23].

Diagnosis

In cases suspicious for infection with SARS-CoV-2, the Robert Koch Institute (RKI) recommends obtaining parallel samples from the upper and lower respiratory tract, depending on the clinical situation. It is important to use swabs suitable for detecting the virus (virus swabs with an appropriate transport medium or, if necessary, dry swabs moistened with a small amount of NaCl solution; no agar swabs).

The material should be examined with RT-PCR for the presence of viral RNA [24]. If the material needs to be preserved for longer periods, it must be stored at a temperature of 4°C .

According to the recommendations of the RKI (www.rki.de/covid-19-falldefinition; as per: 28.03.2020), testing should focus on symptomatic persons and individuals suspected of having the virus based on a differential diagnosis.

A clinical suspicion of infection is based on an individual's previous history, symptoms or findings consistent with COVID-19 disease, and whether a diagnosis for a different disease exists which could adequately explain the presenting symptoms and clinical picture [25].

In practice, the recurrent issue for medical staff is which contacts should lead to testing.

A category 1 contact person is defined a person who had face-to-face contact for a cumulative period of at least 15 minutes with a known COVID-19 patient, e.g. during a conversation [25]. Persons who had this type of contact should initially be sent home to self-isolate (quarantine) for 14 days. For medical staff, this category has been subdivided further into category 1a and 1b contact persons.

A category 1a contact is a person with high-risk exposure, e.g. someone who had unprotected exposure to secretions and aerosols from COVID-19 patients (intubation and extubation of the patient, bronchoscopy, aspiration, nebulisation, manual ventilation prior to endotracheal anaesthesia, proning the patient, non-invasive ventilation (NIV), tracheotomy and cardiopulmonary resuscitation) [26]. This group of people should usually be required to quarantine themselves at home for a period of 14 days. As medical staff are a very limited resource, in view of the shortage of relevant staff, the RKI has recommended a shorter isolation period of 7 days for this group.

Persons classified as contact category 1b had contact with a confirmed COVID-19 case in the context of delivering care or undertaking a medical examination ($> 15 \text{ min}$, $\leq 2 \text{ m}$ distance) without personal protective equipment but also without carrying out a high-risk procedure. Because of the shortage of staff, this group of persons may continue working but should use a surgical mask to cover their mouth and nose for a period of 14 days.

No special precautions are required for category 3 contact persons; this category covers medical staff who were in the same room as a confirmed COVID-19 case and were not wearing adequate personal protective equipment but were never closer than 2 metres, did not come into direct contact with secretions or excretions of the patient and were not exposed to aerosols as well as medical staff who were closer than 2 m to the patient but were wearing adequate personal protective equipment throughout the entire contact period [26].

The overview below summarises the contact categories and appropriate response for each category.

OVERVIEW

The 3 contact categories for medical staff

There are 3 different contact categories for medical staff.

Category Ia

Risky contact with aerosol production.

→ If there are staff shortages: 7 days self-isolation at home followed by testing.

Category Ib

Risky contact without aerosol exposure, distance to patient was < 2 metres, duration of contact was > 15 minutes.

→ If there are staff shortages: can return directly to work with patients if wearing a surgical mask covering mouth and nose.

Category III

No aerosol contact, distance to patient was > 2 metres, duration of contact was < 15 minutes or aerosol + adequate personal protective equipment.

→ No particular measures required.

Hygiene Measures

Cave

Data from Wuhan and Italy show that around 4–20% of medical staff were infected with the virus while caring for COVID-19 patients [18,27].

In addition to strict observance of the rules of basic hygiene, it is critically important to ensure that staff are adequately provided with personal protective equipment. Because the disease is highly contagious, use of a FFP2/FFP3 (face filtering piece) respirator mask is recommended for all aerosol-generating procedures performed when caring for patients. Staff must additionally wear protective goggles and a waterproof apron or gown [28].

Class 2 and 3 FFP masks are characterised by a very low levels of overall leakage, which is why they offer good protection against aerosols (droplet infection); however, working while wearing FFP2/FFP3 respirator masks is only possible for limited periods of time because of the high breathing resistance [29].

As it is expected that supplies of FFP2/FFP3 respirator masks will be insufficient during the pandemic, it is necessary to also think about alternative approaches in an emergency. In its recently published recommendations on the treatment of patients with COVID-19, the Surviving Sepsis Campaign (SSC) cited a current meta-analysis which did not find special respiratory masks (analogous to our FFP2/FFP3 masks) to be superior to conventional surgical masks with regard to preventing the infection from spreading to healthcare staff who treated infectious patients [30]. A randomised study on the treatment of patients which included a number of patients infected with the coronavirus also reported that surgical masks were noninferior to N95 respirator masks [31]. This means that, in exceptional situations, providing patients *and* healthcare staff with surgical masks could be a useful means of reducing the risk of infection for medical staff, at least when treating spontaneously breathing patients.

However, during all aerosol-generating procedures, it is absolutely essential that medical staff wear a FFP2 mask at the very least, or better still a FFP3 mask (see above) for their own protection. The German Society for Pneumology and Respiratory Medicine recently published detailed recommendations [32]. To reduce the use of FFP2/FFP3 masks, it is recommended that medical staff wear personal protective equipment (PPE) during as many of their encounters with patients as possible. When treating patients with the virus who are on the same ward, several patients can be treated while wearing the same PPE. Between contacts with patients, the FFP mask can be placed between 2 low-microbe disposable cardboard kidney dishes if it is possible to prevent the inside of the mask from being contaminated.

To ensure that sufficient PPE is available for all medical staff despite the increased demand during the pandemic, tests are currently being carried out to see whether it would be possible to re-use used FFPS masks using suitable reprocessing methods. Before the reprocessed masks are released for use, it will be necessary to test whether the masks continue to fulfil their protective function after reprocessing.

Treatment

Around 20% of patients develop severe symptoms (► **Table 1**), and around 5% require treatment in an intensive care unit. The lungs react to the disease-causing agent SARS-CoV-2 in the same way they react to other viruses which attack the respiratory system. Patients present with pathophysiological changes which are known to also occur in patients with influenza or viral SARS pneumonia. This means, specifically, that the treatment of patients with COVID-19 must be based, first and foremost, on best standard care, i.e., on optimal compliance with evidence-based treatment recommendations developed to treat acute lung failure (acute respiratory distress syndrome, ARDS) [33].

The recommendations of the Surviving Sepsis Campaign (SSC) published very recently in the context of the current corona pandemic include a total of 50 statements which were assigned different levels of recommendation [34].

The measures listed below are the only ones given a strong recommendation (cf. also ► **Fig. 1**):

- Recommendation against the use of dopamine,
- Recommendation for lung-protective ventilation: low tidal volume ventilation (V_t) of 4–8 ml/kg predicted body weight, PEEP > 10 cm H₂O, but no incremental (stepwise) PEEP recruitment,
- Recommendation for supplemental oxygen if SpO₂ is <90% (but SpO₂ must not be >96%).

Additional measures (e.g., proning, restrictive administration of fluids and veno-venous ECMO as emergency therapy) may be considered.

► **Fig. 2** shows the suggested approach for hypoxemia. Non-invasive ventilation is usually an important component of treatment for acute lung failure. However, the use of non-invasive ventilation and high-flow nasal oxygen therapy are associated with aerosol generation.

If these forms of treatment are used, it is important to ensure the nasal high-flow cannula or NIV mask have an optimal fit. An NIV helmet is preferable if the patient can tolerate it.

Because of the above-mentioned problem of aerosol generation, ventilation based on endotracheal intubation is the preferred approach for patients with acute hypoxemic respiratory insufficiency [35].

Transpulmonary thermodilution (PiCCO2, Pulsion-Maquet or EV1000, Edwards Life Sciences) can be used to guide the restrictive fluid strategy as it can be used to measure extravascular lung water, which plays an important prognostic role in acute lung failure [36,37].

Paracetamol or metamizole can be used to reduce fever. Although the WHO has withdrawn its warning, the data on ibuprofen is still unclear, with NSAID use associated with an increased risk of bleeding [38].

Experimental procedures

Outside best standard care, there is also a huge interest in new and experimental treatment procedures, although there are currently no data available for the overwhelming majority of new procedures. A very recently published study on the use of a com-

COVID-19 with mild ARDS	COVID-19 with moderate/severe ARDS	Salvage/Adjunctive therapy
✓ Vt 4–8 ml/kg and $p_{plat} < 30$ cm H ₂ O Driving pressure < 15 cm H ₂ O	! Consider: Higher PEEP	? Unclear: Antivirals, chloroquine, anti-IL-6 agents
✓ Investigate for bacterial infection	! Consider: Neuromuscular blocking agent (NMBA) boluses to relax patient	! Consider (if patient is prone, high p_{plat} , asynchrony): Continuous NMBA infusion
✓ Target SpO ₂ is 92–96%	! Consider (if responsive to PEEP): Recruitment manoeuvres	! Consider (STOP if no quick response): Inhaled nitric oxide
! Consider: Restrictive fluid strategy	! Consider: Prone ventilation 12–16 h/d	! Consider: Prone ventilation 12–16 h/d
! Consider: Empirical antibiotics	! Consider (if patient is prone, high p_{plat} , asynchrony): Continuous NMBA infusion	! Consider: V-V ECMO or referral to ECMO centre
? Uncertain: Systematic corticosteroids	✗ No incremental (stepwise) recruitment manoeuvres	
	! Consider: Short course of systemic corticosteroids	
	? Uncertain: Antivirals, chloroquine, anti-IL-6 agents	

► **Fig. 1** Summary of clinical recommendations to treat COVID-19 patients [data from: Alhazzani W, Moller MH, Arabi YM et al. Surviving Sepsis Campaign: Guidelines on the Management of Critically Ill Adults with Coronavirus Disease 2019 (COVID-19) (in press). doi:10.1007/s00134-020-06022-5]. Copyright © 2020 by the Society of Critical Care Medicine and the European Society of Intensive Care Medicine.

combination of lopinavir and ritonavir was unable to show any survival benefits for COVID-19 patients [39].

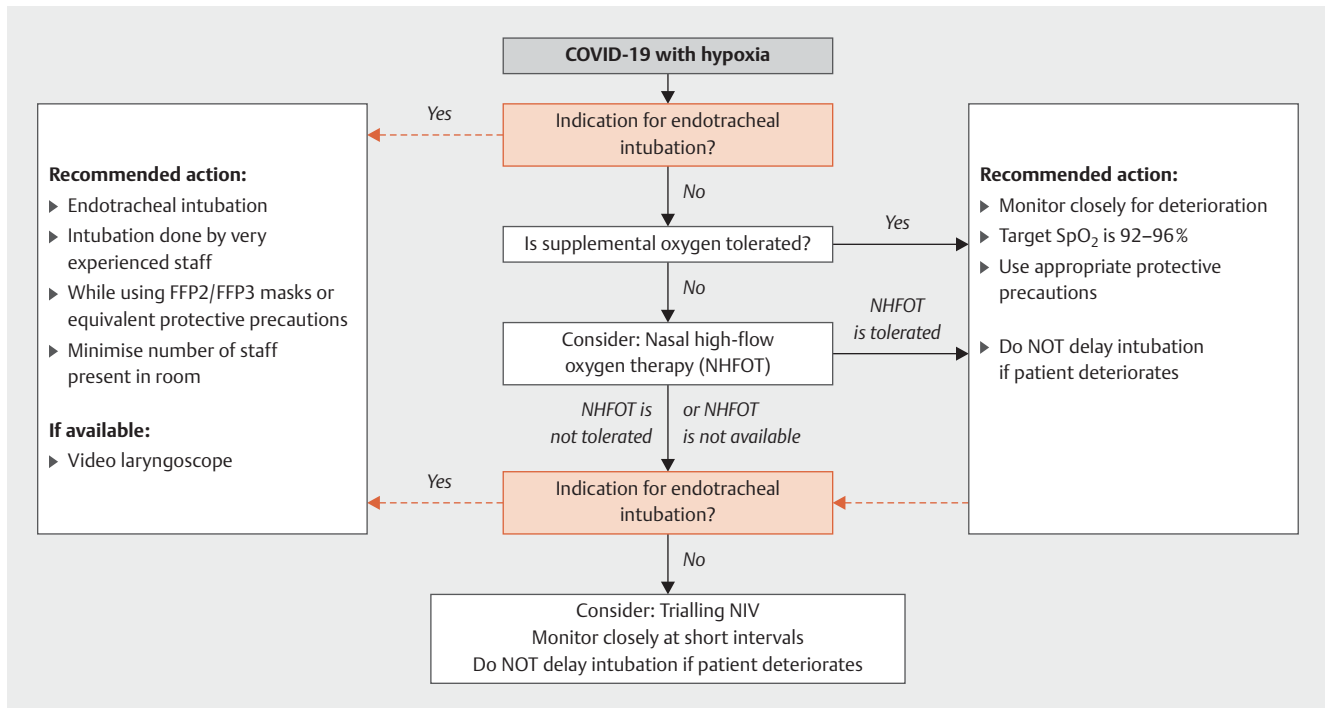
Remdesivir (pharmaceutical company: Gilead Sciences, Inc.) is another effective antiviral agent which was originally developed to treat infections associated with the Ebola virus. Remdesivir is effective to treat a wide range of different viruses, including filoviruses, paramyxoviruses, pneumo-viruses and pathogenic coronaviruses [40]. In cell cultures inoculated with Middle East respiratory syndrome coronaviruses, remdesivir was found to be superior to a combination of lopinavir/ritonavir [30]. The first data from Chinese patients are expected in early April. However, the substance is currently not available in Germany outside of controlled trials.

Early on, the suggestion was made that chloroquine could be a potentially effective antiviral drug; however, positive results in cell cultures and animal experiments could not be replicated or confirmed in clinical practice [41]. A recent Letter to the Editor [42] reported positive effects in 100 patients in a Chinese multicentre study. In the group which received the drug, it was found to prevent exacerbation of pneumonia, improve X-ray findings and shorten the overall course of disease. No relevant side effects

were noted. There are currently no peer-reviewed publications on its use in this context; a recent systematic review into the use of chloroquine to treat COVID-19 disease recommended that chloroquine should only be administered in accordance with the Monitored Emergency Use of Unregistered Interventions (MEURI) protocol [43].

Based on the available evidence, it is currently not possible to recommend any of these therapies. In each case, an individual risk-benefit assessment is necessary prior to initiating the off-label use of particular substances, as serious side effects have been reported [44].

There is also considerable interest in the use of extracorporeal membrane oxygenation (ECMO) as an emergency therapy [45]. Venovenous ECMO (vv-ECMO) is already an established procedure to treat refractory respiratory failure and appears to be associated with a survival benefit in a subgroup of patients [46,47]. There is general agreement that this therapy should only be carried out in experienced centres. As with other medical procedures, a minimum of 20 venovenous ECMO runs per year is considered the minimum entry criterion [20].



► **Fig. 2** Treatment algorithm for patients with acute hypoxemic respiratory insufficiency caused by COVID-19 [data from: Alhazzani W, Moller MH, Arabi YM et al. Surviving Sepsis Campaign: Guidelines on the Management of Critically Ill Adults with Coronavirus Disease 2019 (COVID-19) (in press). doi:10.1007/s00134-020-06022-5]. Copyright © 2020 by the Society of Critical Care Medicine and the European Society of Intensive Care Medicine.

A small subgroup of COVID-19 patients experience a cytokine storm during infection, which is caused by an overwhelming and excessive release of proinflammatory cytokines (e.g. IL-2, IL-7, interferon- γ , TNF- α) [22]. Serum ferritin and IL-6 levels were found to be significantly elevated in samples obtained from deceased individuals from this subgroup of patients [48]. This is the rationale behind specific anti-inflammatory treatments, for example, the administration of interferon β -1b, the IL-1 blocker anakinra, the IL-6 receptor blocker tocilizumab or corticosteroids. There are no evidence-based data for any of the therapies mentioned here; analogously to the recommendations on the treatment of septic shock, corticosteroids may be considered as a hydrocortisone therapy (200 mg/24 h) in patients with high vasopressor doses.

Improved outcomes were reported in a case series of patients with septic shock and high cytokine concentrations (e.g. an IL-6 of ≥ 1000 pg/ml) following the use of a cytokine filter (Cytosorbents, Berlin, Germany) [49]. This requires an extracorporeal circulation (hemofiltration and/or ECMO) in which the filter can be incorporated. Cytokine removal could be an interesting treatment option for patients who meet the criteria. Antibiotic dosages may need to be adjusted accordingly.

CORE STATEMENTS

- COVID-19 is a new viral disease that affects the respiratory system. The currently available data suggest that around 20% of cases develop severe symptoms, and around 5% of all cases require intensive care. Mortality is between 1 and 2% of all persons who develop the disease.
- Adequate protection of medical staff is essential to prevent nosocomial infection. Medical staff must therefore wear personal protective equipment consisting of an FFP2/FFP3 mask, safety goggles and a waterproof overall during all aerosol-generating procedures.
- Intensive care treatment of patients with lung failure is based on established recommendations for the treatment of patients with ARDS issued by the relevant professional societies. The focus is on lung-protective ventilation, prone positioning, restrictive fluid management and adequate management of other organ insufficiencies. Patients requiring extracorporeal membrane oxygenation must be treated in centres experienced in providing this type of organ support.
- New and experimental treatment options are being discussed. However, based on the currently available evidence, it is not yet possible to recommend any of these approaches. In every case, an individual risk-benefit assessment is necessary prior to initiating the off-label use of particular substances as serious side effects have been reported.

Acknowledgements

The authors would like to thank Mr. Hauke Sieg, Klinik für Anästhesiologie, Intensivmedizin, Notfallmedizin und Schmerztherapie Asklepios Klinik St. Georg, Hamburg, for producing the illustrations. We would like to thank PD Dr. Wiest, Klinik für Pneumologie, Asklepios Klinikum Harburg, and Dr. Hohl-Radke, Klinik für Psychiatrie, Psychosomatik und Psychotherapie, Asklepios Fachkliniken Brandenburg, for their valuable remarks and comments.

Conflict of Interest

Prof. Bein received honoraria for consulting and giving lectures from Pulsion/Maquet, Edwards Life Sciences and Cytosorbents. The other authors state that they have no conflict of interest.

Information

This is a translation of “SARS-CoV-2/COVID-19: Evidence-Based Recommendations on Diagnosis and Therapy” published in: *Anästhesiologie und Notfallmedizin Schmerztherapie* 2020; 55: 257–265

References

- [1] Johns Hopkins Coronavirus Resource Center. Coronavirus COVID-19 Global Cases by the Center for Systems Science and Engineering (CSSE) at Johns Hopkins University. Online: <https://coronavirus.jhu.edu/map.html>; last access: 28.03.2020
- [2] Rothan HA, Byrareddy SN. The epidemiology and pathogenesis of coronavirus disease (COVID-19) outbreak. *J Autoimmun* 2020. doi:10.1016/j.jaut.2020.102433
- [3] Andersen KG, Rambaut A, Lipkin WI et al. The proximal origin of SARS-CoV-2. *Nat Med* 2020. doi:10.1038/s41591-020-0820-9
- [4] Adhikari SP, Meng S, Wu Y-J et al. Epidemiology, causes, clinical manifestation and diagnosis, prevention and control of coronavirus disease (COVID-19) during the early outbreak period: a scoping review. *Infect Dis Poverty* 2020; 9: 29
- [5] Wang CJ, Ng CY, Brook RH. Response to COVID-19 in Taiwan. *JAMA* 2020. doi:10.1001/jama.2020.3151
- [6] Cheng ZJ, Shan J. 2019 Novel coronavirus: where we are and what we know. *Infection* 2020; 48: 155–163
- [7] Wu JT, Leung K, Bushman M et al. Estimating clinical severity of COVID-19 from the transmission dynamics in Wuhan, China. *Nat Med* 2020. doi:10.1038/s41591-020-0822-7
- [8] Cruz A, Zeichner S. COVID-19 in children: initial characterization of the pediatric disease. *Pediatrics* 2020. doi:10.1542/peds.2020-0834
- [9] Wu Z, McGoogan JM. Characteristics of and important lessons from the coronavirus disease 2019 (COVID-19) outbreak in China. *JAMA* 2020. doi:10.1001/jama.2020.2648
- [10] Center of Disease Control. Healthcare Professionals: frequently asked questions and answers. CDC. Online: <https://www.cdc.gov/coronavirus/2019-ncov/hcp/faq.html>; last access: 28.03.2020
- [11] Bao L, Deng W, Gao H et al. Reinfection could not occur in SARS-CoV-2 infected rhesus macaques. *bioRxiv*. Cold Spring Harbor Laboratory 2020
- [12] Zou L, Ruan F, Huang M et al. SARS-CoV-2 Viral load in upper respiratory specimens of infected patients. *N Engl J Med* 2020; 382: 1177–1179
- [13] Yang X, Yu Y, Xu J et al. Clinical course and outcomes of critically ill patients with SARS-CoV-2 pneumonia in Wuhan, China: a single-centered, retrospective, observational study. *Lancet Respir Med* 2020. doi:10.1016/S2213-2600(20)30079-5
- [14] Wang D, Hu B, Hu C et al. Clinical characteristics of 138 hospitalized patients with 2019 novel coronavirus-infected pneumonia in Wuhan, China. *JAMA* 2020; 323: 1061
- [15] Huang C, Wang Y, Li X et al. Clinical features of patients infected with 2019 novel coronavirus in Wuhan, China. *Lancet* 2020; 395: 497–506
- [16] Guan W, Ni Z, Hu Y et al. Clinical characteristics of coronavirus disease 2019 in China. *N Engl J Med* 2020. doi:10.1056/NEJMoa2002032
- [17] Zhou F, Yu T, Du R et al. Clinical course and risk factors for mortality of adult inpatients with COVID-19 in Wuhan, China: a retrospective cohort study. *Lancet* 2020; 395: 1054–1062. doi:10.1016/S0140-6736(20)30566-3
- [18] Wu Z, McGoogan J. Characteristics of and important lessons from the coronavirus disease 2019 (COVID-19) outbreak in China: summary of a report of 72314 cases from the Chinese Center for Disease Control and Prevention. *JAMA* 2020. doi:10.1001/jama.2020.2648
- [19] Fan E, Brodie D, Slutsky AS. Acute respiratory distress syndrome. *JAMA* 2018; 319: 698
- [20] AWMF. S3-Leitlinie Invasive Beatmung und Einsatz extrakorporaler Verfahren bei akuter respiratorischer Insuffizienz, 1. Aufl., Langversion. Stand 04.12.2017. Online: https://www.awmf.org/uploads/tx_szleitlinien/001-0211_S3_Invasive_Beatmung_2017-12.pdf; last access: 28.03.2020
- [21] Wu C, Chen X, Cai Y et al. Risk factors associated with acute respiratory distress syndrome and death in patients with coronavirus disease 2019 pneumonia in Wuhan, China. *JAMA Intern Med* 2020. doi:10.1001/jamainternmed.2020.0994
- [22] Mehta P, McAuley DF, Brown M et al. COVID-19: consider cytokine storm syndromes and immunosuppression. *Lancet* 2020; 395: 1033–1034. doi:10.1016/S0140-6736(20)30628-0
- [23] Chen N, Zhou M, Dong X et al. Epidemiological and clinical characteristics of 99 cases of 2019 novel coronavirus pneumonia in Wuhan, China: a descriptive study. *Lancet* 2020; 395: 507–513
- [24] Reusken CBEM, Broberg EK, Haagmans B et al. Laboratory readiness and response for novel coronavirus (2019-nCoV) in expert laboratories in 30 EU/EEA countries, January 2020. *Eurosurveillance* 2020. doi:10.2807/1560-7917.ES.2020.25.6.2000082
- [25] Robert Koch-Institut – RKI. Coronavirus SARS-CoV-2 – Hinweise zur Testung von Patienten auf Infektion mit dem neuartigen Coronavirus SARS-CoV-2. Online: https://www.rki.de/DE/Content/InfAZ/N/Neuartiges_Coronavirus/Vorl_Testung_nCoV.html; last access: 28.03.2020
- [26] Robert Koch-Institut – RKI. Coronavirus SARS-CoV-2 – Optionen zum Management von Kontaktpersonen unter medizinischem Personal bei Personalmangel. Online: https://www.rki.de/DE/Content/InfAZ/N/Neuartiges_Coronavirus/HCW.html; last access: 28.03.2020
- [27] Anonymous. COVID-19: protecting health-care workers. *Lancet* 2020; 395: 922. doi:10.1016/S2213-2600(20)30066-7
- [28] AWMF online. Empfehlungen Krankenhaushygiene: Hygieneanforderungen respiratorisch übertragbare Infektions-Erkrankungen. Online: https://www.awmf.org/fileadmin/user_upload/Leitlinien/029_AWMF-AK_Krankenhaus-_und_Praxishygiene/HTML-Dateien/029-0321_S1_Hygiene_respiratorisch-uebertragbare_Infektionserkrankungen_2016-01.html; last access: 28.03.2020
- [29] Robert Koch-Institut – RKI. Infektionsprävention im Rahmen der Pflege und Behandlung von Patienten mit übertragbaren Krankheiten. *Bundesgesundheitsbl Gesundheitsforsch Gesundheitsschutz* 2015; 58: 1151–1170
- [30] Martinez MA. Compounds with therapeutic potential against novel respiratory 2019 coronavirus. *Antimicrob Agents Chemother* 2020. doi:10.1128/AAC.00399-20
- [31] Radonovich LJ, Simberkoff MS, Bessesen MT et al. N95 Respirators vs. Medical Masks for Preventing Influenza Among Health Care Personnel. *JAMA* 2019; 322: 824

- [32] Sektion 2 Endoskopie der Deutschen Gesellschaft für Pneumologie und Beatmungsmedizin. Empfehlung. Online: https://pneumologie.de/fileadmin/user_upload/Aktuelles/2020-03_DGP-Empfehlung_Broncho_Covid19.pdf; last access: 04.04.2020
- [33] Fan E, Brodie D, Slutsky AS. Acute respiratory distress syndrome. *JAMA* 2018; 319: 698
- [34] Oczkowski S, Levy MM, Derde L et al. Surviving Sepsis Campaign: Guidelines on the Management of Critically Ill Adults with Coronavirus Disease 2019 (COVID-19) Authors Intensive Care Medicine (ICM) and Critical Care Medicine (CCM). *Intensive Care Med* 2020. doi:10.1007/s00134-020-06022-5
- [35] Kluge S, Janssens U, Welte T et al. Empfehlungen zur intensivmedizinischen Therapie von Patienten mit COVID-19. *Med Klin Intensivmed Notfallmed* 2020. doi:10.1007/s00063-020-00674-3
- [36] LeTourneau JL, Pinney J, Phillips CR. Extravascular lung water predicts progression to acute lung injury in patients with increased risk. *Crit Care Med* 2012; 40: 847–854
- [37] Bein B, Renner J. Best practice & research clinical anaesthesiology: Advances in haemodynamic monitoring for the perioperative patient. *Best Pract Res Clin Anaesthesiol* 2019; 33: 139–153
- [38] Müller C. DAZ online. WHO rät doch nicht von Ibuprofen ab: Ibuprofen und COVID-19: WHO rudert zurück. Online: <https://www.deutsche-apotheker-zeitung.de/news/artikel/2020/03/19/ibuprofen-und-covid-19-who-rudert-zurueck>; last access: 28.03.2020
- [39] Cao B, Wang Y, Wen D et al. A Trial of lopinavir–ritonavir in adults hospitalized with severe Covid-19. *N Engl J Med* 2020. doi:10.1056/NEJMoa2001282
- [40] Zhang L, Liu Y. Potential interventions for novel coronavirus in China: A systematic review. *J Med Virol* 2020; 92: 479–490
- [41] Touret F, de Lamballerie X. Of chloroquine and COVID-19. *Antiviral Res* 2020; 177: 104762
- [42] Gao J, Tian Z, Yang X. Breakthrough: chloroquine phosphate has shown apparent efficacy in treatment of COVID-19 associated pneumonia in clinical studies. *Biosci Trends* 2020; 14: 72–73
- [43] Cortegiani A, Ingoglia G, Ippolito M et al. A systematic review on the efficacy and safety of chloroquine for the treatment of COVID-19. *J Crit Care* 2020. doi:10.1016/j.jcrc.2020.03.005
- [44] Kalil AC. Treating COVID-19 – Off-label drug use, compassionate use, and randomized clinical trials during pandemics. *JAMA* 2020. doi:10.1001/jama.2020.4742
- [45] Ramanathan K, Antognini D, Combes A et al. Planning and provision of ECMO services for severe ARDS during the COVID-19 pandemic and other outbreaks of emerging infectious diseases. *Lancet Respir Med* 2020. doi:10.1016/S2213-2600(20)30121-1
- [46] Peek GJ, Mugford M, Tiruvoipati R et al. Efficacy and economic assessment of conventional ventilatory support versus extracorporeal membrane oxygenation for severe adult respiratory failure (CESAR): a multicentre randomised controlled trial. *Lancet* 2009; 374: 1351–1363
- [47] Combes A, Hajage D, Capellier G et al. Extracorporeal Membrane Oxygenation for Severe Acute Respiratory Distress Syndrome. *N Engl J Med* 2018; 378: 1965–1975
- [48] Ruan Q, Yang K, Wang W et al. Clinical predictors of mortality due to COVID-19 based on an analysis of data of 150 patients from Wuhan, China. *Intensive Care Med* 2020. doi:10.1007/s00134-020-05991-x
- [49] Kogelmann K, Jarczak D, Scheller M et al. Hemoadsorption by CytoSorb in septic patients: a case series. *Crit Care* 2017; 21: 74