

Endocrine Conditions and COVID-19

Authors

Skand Shekhar^{1, 2}, Rachel Wurth¹, Crystal D. C. Kamilaris¹, Graeme Eisenhofer³, Francisco J. Barrera^{4, 5}, Michelle Hajdenberg⁶, Joselyne Tonleu², Janet E. Hall², Ernesto L. Schiffrin⁷, Forbes Porter⁸, Constantine A. Stratakis¹, Fady Hannah-Shmouni¹

Affiliations

- 1 Section on Endocrinology & Genetics, Eunice Kennedy Shriver National Institute of Child Health and Human Development, National Institutes of Health (NIH), Bethesda, Maryland, USA
- 2 Clinical Research Branch, National Institute of Environmental Health Sciences, NIH, North Carolina, USA
- 3 Institute of Clinical Chemistry and Laboratory Medicine, and Department of Medicine III, University Hospital Carl Gustav Carus, Technische Universität Dresden, Dresden, Germany
- 4 Endocrinology Division, Internal Medicine Department, University Hospital “Dr. Jose E. Gonzalez”, Universidad Autonoma de Nuevo Leon, Monterrey, Mexico
- 5 Plataforma INVEST-KER Unit Mayo Clinic, School of Medicine, Universidad Autonoma de Nuevo Leon, Monterrey, Mexico
- 6 College of Arts and Sciences at Washington University in St. Louis, Saint Louis, Missouri, USA
- 7 Department of Medicine, Sir Mortimer B. Davis-Jewish General Hospital, McGill University, Montreal, Quebec, Canada
- 8 Division of Translational Medicine, Eunice Kennedy Shriver National Institute of Child Health and Human Development, NIH, Bethesda, Maryland, USA

Key words

COVID-19, endocrinology, diabetes, hypertension, obesity, metabolic syndrome

received 22.04.2020

accepted 30.04.2020

Bibliography

DOI <https://doi.org/10.1055/a-1172-1352>

Published online: 8.6.2020

Horm Metab Res 2020; 52: 471–484

© Georg Thieme Verlag KG Stuttgart · New York

ISSN 0018-5043

Correspondence

Skand Shekhar MD

Section on Endocrinology & Genetics

Eunice Kennedy Shriver National Institute of Child Health and Human Development,

National Institute of Environmental Health Sciences,

National Institutes of Health

10 Center Drive, Rm 2N-119

Bethesda, MD, USA

Tel.: +1 301 451 1866; +1 646 409 7759,

Fax: +1 203 233 5353

skand.shekhar@nih.gov

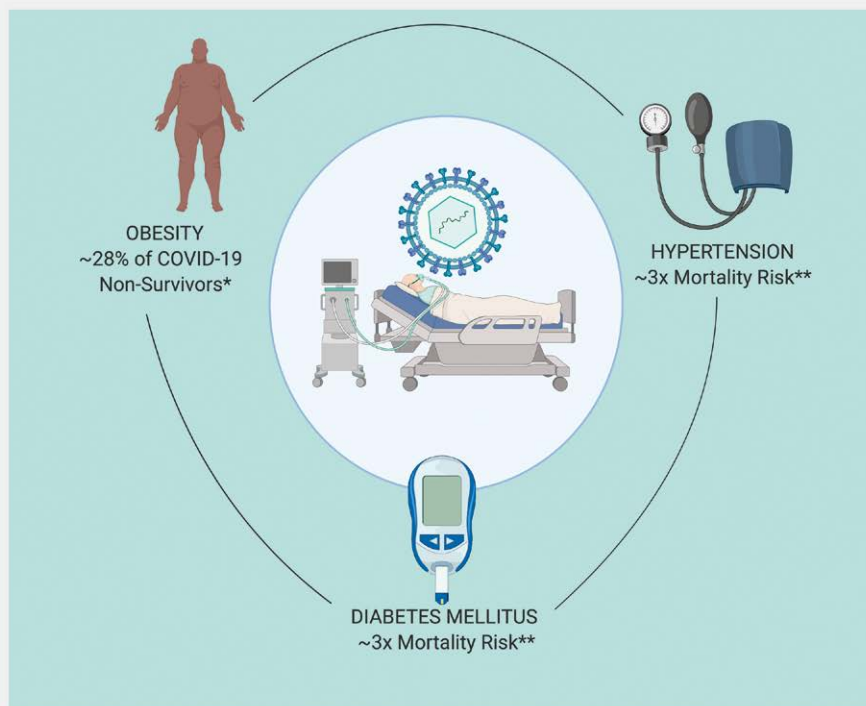
ABSTRACT

COVID-19 was declared a global pandemic by the WHO and has affected millions of patients around the world. COVID-19 disproportionately affects persons with endocrine conditions, thus putting them at an increased risk for severe disease. We discuss the mechanisms that place persons with endocrine conditions at an additional risk for severe COVID-19 and review the evidence. We also suggest precautions and management of endocrine conditions in the setting of global curfews being imposed and offer practical tips for uninterrupted endocrine care.

Introduction

Coronavirus disease 2019 (COVID-19) was declared a pandemic by the World Health Organization (WHO) on March 11, 2020 with over 3,059,642 cases and 211,028 deaths being reported from 213 countries and territories at the time of writing this review [1, 2]. There is increasing evidence to suggest that patients with endocrinopathies such as diabetes mellitus (DM), hypertension (HTN), obesity and cardiovascular disease are at higher risk for COVID-19 related complications [3]. Reports from the UK and US have indicated a high prevalence of DM and obesity in COVID-19 non-sur-

vivors and severe cases [4, 5]. In the US, the most commonly reported cardiometabolic comorbidities associated with COVID-19 are HTN (49.7%), obesity (48.3%), DM (28.3%), and cardiovascular disease (27.8%) (► **Fig. 1**) [6]. Furthermore, DM is the most common comorbidity in COVID-19 deaths according to one report [4]. Given these data, both the WHO and the US Centers for Disease Control and Prevention (CDC) list DM, HTN and obesity as risk factors for development of more severe COVID-19 outcomes [6–8]. In this review, we summarize common endocrinopathies associated with COVID-19.



► **Fig. 1** Clinical impact of endocrine conditions on COVID-19 *Louisiana Department of Health Updates for 3/27/2020. <http://ldh.la.gov> **ref [3].

Overview of the Novel Coronavirus-Cell Interaction

Severe acute respiratory syndrome coronavirus 2 (SARS-CoV-2) is a betacoronavirus that was identified as the causative pathogen of COVID-19 [9]. This virus enters the intracellular environment by binding of the spike protein on its receptor binding domain (RBD) to angiotensin converting enzyme 2 (ACE2) which is present on the epithelial surface of human cells (► **Fig. 2**) [9]. Notably, ACE2 is a distinct molecule from the well-known angiotensin converting enzyme 1 (ACE1), which is a therapeutic target. After attachment to ACE2, the SARS-CoV-2 recruits a serine protease TMPRSS2, which facilitates viral protein priming and cytoplasmic entry (► **Fig. 2**) [10]. ACE2 is cleaved by a protease ADAMTS17, which in turn reduces its surface expression. After entering the cytoplasm, the virus enters the nucleus via an endosomal pathway and viral replication ensues [10].

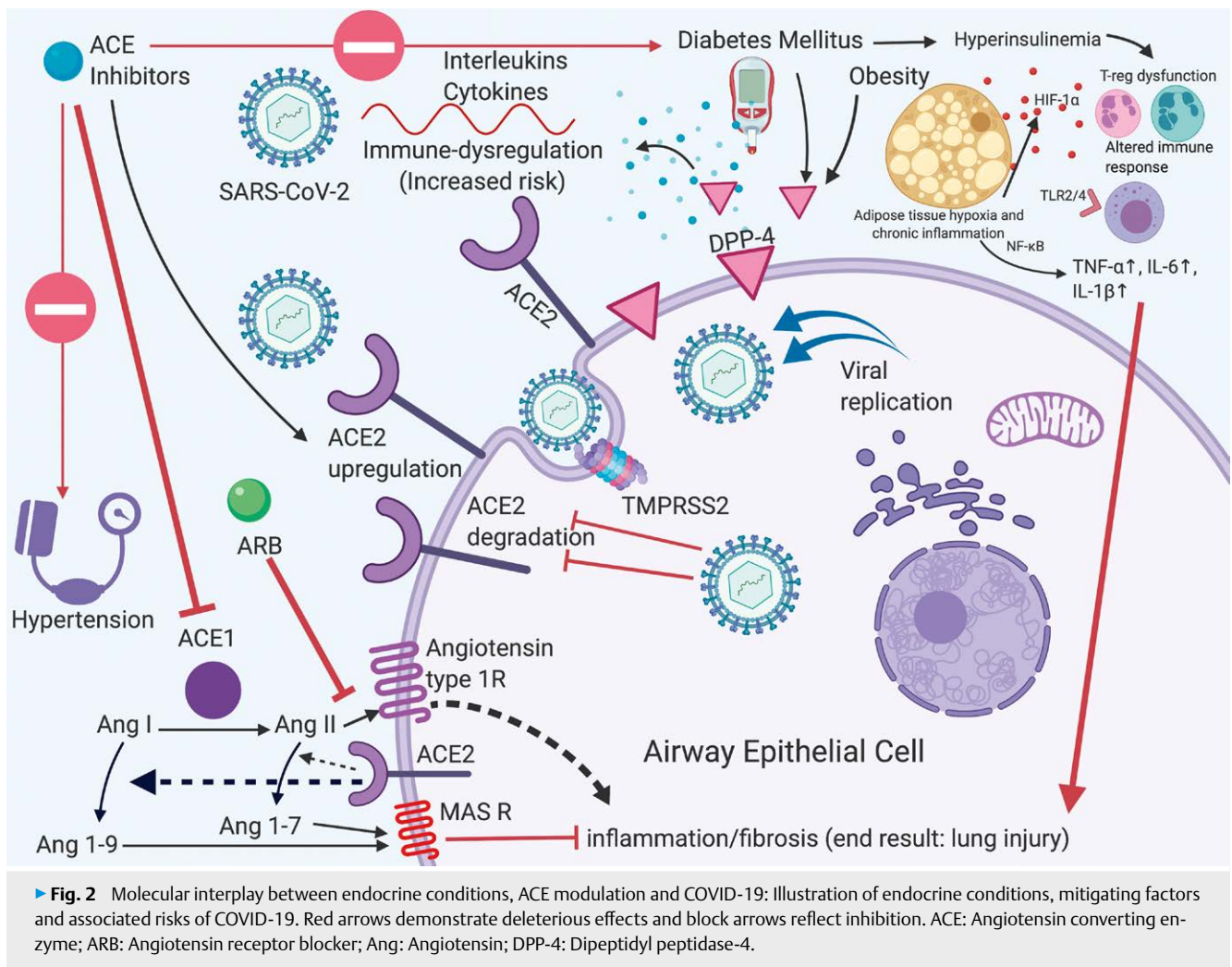
Diabetes mellitus

Pathophysiology and risk

There are several reasons why DM may aggravate the risk of severe COVID-19. First, DM may facilitate cell entry of SARS-CoV-2 by augmenting the surface expression of ACE2 through hyperinsulinemia-mediated reduction in ADAMTS17 activity [11–13]. In humans, higher expression of ACE2 protein in the pancreatic islets was associated with hyperglycemia and diabetes caused by SARS-coronavirus (SARS-CoV) another coronavirus that uses ACE2 for cell entry, suggesting that SARS-CoV-2 may act through a similar mechanism [14]. Second, ACE2 modulators such as ACE1 inhibitors (ACEi), angiotensin receptor blockers (ARBs), and thiazolidinediones, which are used frequently in DM may upregulate ACE2 ex-

pression [9, 15]. Third, DM is associated with complement defects and reduced antigen stimulated IL-6, IL-8 and TNF- α [16, 17]; and impairment of T-regulator cells (Tregs) and antigen presenting cells (APCs) that may exacerbate the immunodeficiency [18]. Fourth, co-existing HTN and obesity, acting via HIF-1 α and toll-like receptors, may contribute to the pre-existing chronic inflammation leading to impaired immune-mediated clearance of SARS-CoV-2 [18, 19]. Lastly, dipeptidyl peptidase-4 (DPP-4), a surface glycoprotein, which degrades glucagon like peptide 1 ("GLP-1", an incretin hormone), is known to be elevated in DM and obesity [20–22], and also functions as a surface receptor for coronaviruses [23, 24]. Although the latter is yet to be shown for SARS-CoV-2, the unique role of DPP-4 in coronavirus infections makes DPP-4 inhibition a possible therapeutic target, which may work both by reducing DPP-4 expression and offsetting the cytokine mediated end organ damage [19, 25]. This assessment is further strengthened by evidence that DPP-4 inhibition showed anti-inflammatory effects in pre-clinical human studies [19, 26, 27]. Taken together, patients with DM may be predisposed to cytokine storms resulting in end organ injury and mortality (► **Fig. 2**) [28].

A review of sixteen clinical studies with a total of 9,011 patients with COVID-19 revealed a prevalence of DM between 2.0 % and 56.6 % [median (IQR) %: 13.2 (9.10–23.70)], highlighting the high risk that patients with DM face in the wake of the global COVID-19 pandemic (► **Table 1**) [3, 6, 29–43]. Additionally, hyperglycemia has been seen in 35–58 % of inpatients with COVID-19 suggesting the burden of impaired glucose metabolism [29, 34]. Other studies have reported a higher DM prevalence in severe cases of COVID-19 when compared to mild cases (14.3 vs. 5.0 %, $p = 0.009$) [39],



as well as an increased mortality risk and an increased case fatality rate in patients with DM (~3x, ▶ **Fig. 1**) [3], in comparison to persons without DM (7.3 vs. 2.3%, respectively), indicating the amplified risk to patients with DM [44]. In a different study DM was highlighted as the most common comorbidity occurring in 41% of all COVID-19 deaths [4]. Additionally, one study noted that COVID-19-affected patients with DM as a sole comorbidity had a 16.5% mortality rate compared to 0% in comorbidity free COVID-19 patients, whereas another reported poor outcomes in COVID-19 inpatients with uncontrolled hyperglycemia compared to their euglycemic counterparts [45, 46]. The US CDC included DM as a risk factor for severe COVID-19 in their clinical guidance [8].

Evidence of an increased risk of long term metabolic complications in patients that have recovered from SARS, caused by SARS-CoV, raises concern for a possible increased risk for similar complications in COVID-19. This was demonstrated in a follow-up study of thirty one recovered SARS patients in comparison to healthy volunteers at 12 years that revealed abnormal glucose metabolism in 60% (vs. 16%), hyperlipidemia in 68% (vs. 40%), and cardiovascular abnormality in 44% (vs. 0%) of study participants [47]. It was speculated that the use of pulse dose glucocorticoids may have contributed to these long-term metabolic derangements [47]. Glucocorticoid use in hospitalized COVID-19 patients may also play a

role in acute inpatient hyperglycemia. However, glucocorticoid use has fallen out of favor in the routine management of COVID-19 according to CDC and WHO guidelines [48, 49] and evidence points to glucocorticoids attenuating anti-inflammatory angiotensin 1–7 levels and delaying viral clearance (▶ **Fig. 3**), providing a molecular basis for avoiding their universal use [50, 51]. A clinical trial is currently underway to determine the efficacy of systemic glucocorticoid therapy in COVID-19 [52].

Clinical approach

Recently, the American Diabetes Association (ADA) issued patient recommendations regarding preparedness and precautions for COVID-19 (▶ **Table 2**) including keeping updated contact information; ensuring adequate stocks of simple carbohydrates, medications and insulin; and ensuring availability of supplies such as rubbing alcohol, glucagon kits, ketone strips, soap and household items [53]. The American Association of Clinical Endocrinologists also emphasizes adequate emergency preparedness and provided a checklist of emergency plan action items to ensure the uninterrupted care of DM (▶ **Table 2**) [54, 55].

From a clinical practice standpoint patient counseling should include discussing glycemic goals and sick day insulin dosing regimens, as well as adequate hydration and maintaining access to food

► **Table 1** Prevalence of diabetes mellitus (DM) and hypertension (HTN) in patients with COVID-19.

Title	Author	Sample	Diabetes prevalence	Hypertension prevalence	Obesity prevalence
Clinical Course and Outcomes of Critically Ill Patients With SARS-CoV-2 Pneumonia in Wuhan, China: A Single-Centered, Retrospective, Observational Study	Yang et al. [29]	52 critically sick patients	17 %	NR	NR
Clinical Characteristics of Coronavirus Disease 2019 in China	Guan et al. [82]	1099 patients	7.40 %	15 %	NR
Clinical characteristics of 140 patients infected with SARS-CoV-2 in Wuhan, China	Zhang et al. [31]	140 patients	12.10 %	30 %	NR
Clinical Characteristics of 138 Hospitalized Patients With 2019 Novel Coronavirus-Infected Pneumonia in Wuhan, China	Wang et al. [32]	138 patients	10.10 %	31.20 %	NR
Clinical findings in a group of patients infected with the 2019 novel coronavirus (SARS-Cov-2) outside of Wuhan, China: retrospective case series	Xu et al. [33]	62 patients	2 %	8 %	NR
Epidemiological and clinical characteristics of 99 cases of 2019 novel coronavirus pneumonia in Wuhan, China: a descriptive study	Chen et al. [34]	99 patients	13 %	NR	NR
A familial cluster of pneumonia associated with the 2019 novel coronavirus indicating person-to-person transmission: a study of a family cluster	Chan et al. [41]	Family of 6 patients	16 %	32 %	NR
Clinical course and risk factors for mortality of adult inpatients with COVID-19 in Wuhan, China: a retrospective cohort study	Zhou et al. [3]	191 patients	19 %	30 %	NR
Analysis of Myocardial Injury and Cardiovascular Diseases in Critical Patients with New Coronavirus Pneumonia	Chen et al. [83]	150 patients	13.3 %	32.6 %	NR
A Trial of Lopinavir-Ritonavir in Adults Hospitalized with Severe Covid-19	Cao et al. [36]	199 patients	11.16 %	NR	NR
Characteristics and Outcomes of 21 Critically Ill Patients With COVID-19 in Washington State	Arentz et al. [38]	21 critically sick patients	33.3 %	NR	NR
Epidemiologic and Clinical Characteristics of 91 Hospitalized Patients with COVID-19 in Zhejiang, China: A retrospective, multi-centre case series.	Qian et al. [40]	91 patients	8.79 %	16.48 %	NR
Host susceptibility to severe COVID-19 and establishment of a host risk score: findings of 487 cases outside Wuhan.	Shi et al. [39]	487 patients	6 %	20.3 %	NR
Clinical Characteristics of Covid-19 in New York City	Goyal et al. [42]	393 patients	25.2 %	50.1 %	35.8 %
Hospitalization Rates and Characteristics of Patients Hospitalized with Laboratory-Confirmed Coronavirus Disease 2019 – COVID-NET, 14 States, March 1–30, 2020	Garg et al. [6]	178 patients	28.3 %	49.7 %	48.3 %
Presenting Characteristics, Comorbidities, and Outcomes Among 5700 Patients Hospitalized With COVID-19 in the New York City Area	Richardson et al. [43]	5700 patients	56.6 %	33.8 %	41.7 %

NR: Not reported.

(including nonperishable items, glucose and electrolyte tablets). Furthermore, adoption and continuation of a healthy diet and recommended 150 minutes of weekly exercise such as indoor walking and other physical distancing compatible exercises should be encouraged [56]. Recommended vaccinations for influenza, pneumococcal and other infections should be emphasized (based on CDC or equivalent local authority guidelines). The latter is of major importance since viral co-infection has been frequent in COVID-19 [57–59]. Furthermore, patients should be notified of insulin availability without a prescription in many countries as a contingency measure (US, Canada, India, Mexico, etc.) [60–63].

For inpatient hyperglycemia management, the blood glucose target recommended by the *ADA Standards of Medical Care in Diabetes* is 140–180 mg/dL for most critically-ill and non-critically ill patients, with more stringent glycemic goals (blood glucose 110–140 mg/dL) recommended for selected patients if hypoglycemia can be avoided [64]. However, specific glycemic targets for patients with COVID-19 have not been released by the ADA to date. In the aforementioned guidelines, the ADA recommends the consideration of more liberal glycemic goals (blood glucose > 180 mg/dL) for patients that have severe comorbidities, are terminally ill, or where frequent glucose monitoring or close nursing supervision is not possible. In these patients less aggressive insulin regimens with the

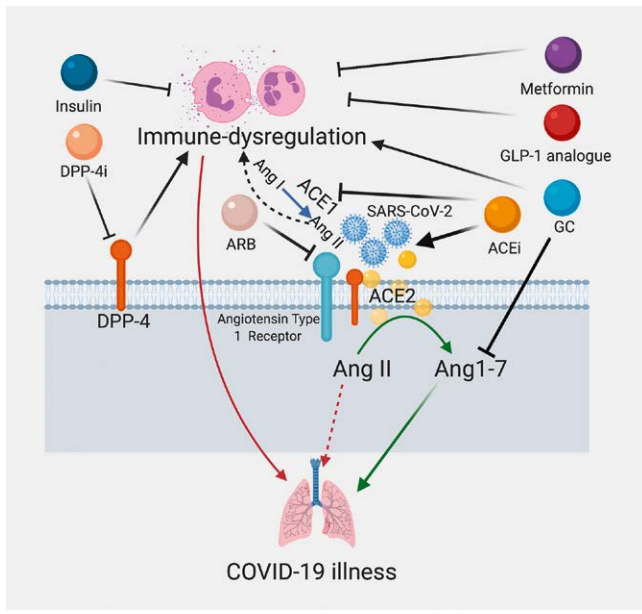


Fig. 3 Effects of commonly used drugs in obesity, diabetes mellitus, and hypertension on immune dysregulation. Red arrows indicate negative clinical consequences, green arrows indicate positive clinical implications, black arrows reflect stimulation and block arrows signify inhibition. ACE: Angiotensin converting enzyme; ARB: Angiotensin receptor blockers; Ang: Angiotensin; DPP-4: Dipeptidyl peptidase-4; GLP-1: Glucagon like peptide-1; GC: Glucocorticoids.

aim of minimizing glycosuria, dehydration, and electrolyte disturbances may be more appropriate, however clinical judgment combined with continuing assessment of clinical status that includes changes in the trajectory of glucose measures, illness severity, nutritional status, or concomitant medications that might affect glucose levels, should be incorporated into medical decision making. Furthermore, it is reasonable to discontinue sodium-glucose co-transporter-2 inhibitors (SGLT-2i) that have been associated with intravascular volume depletion and increased risk of euglycemic ketosis [56]. Discontinuation of sulfonylureas is also advisable, particularly in critical patients, where drug renal clearance may be compromised [56]. Chloroquine and hydroxychloroquine, which are under investigation for efficacy in the treatment of COVID-19, may cause hypoglycemia [65, 66]. In contrast, antiviral drugs such as ritonavir and lopinavir, which were used for COVID-19 previously, are associated with hyperglycemia [67]. Use of these drugs should also be accompanied by adjustments in diabetes regimens.

Because of the need for flexible management, insulin remains the safest drug for the management of hyperglycemia in DM patients and has an added anti-inflammatory effect in the critical illness setting [68]. Importantly, DPP-4 inhibitors and GLP-1 receptor analogues may not only attenuate the chronic inflammatory state in DM but also have independent lung-protective and immunomodulatory effects (in pre-clinical studies) and may prove beneficial (► Fig. 3) [19, 69–71].

Panic-buying is a major threat in this crisis. Fortunately, to date, there is no report of a major household or medical supply shortage and clinicians should counsel patients against this practice to ensure adequate availability for others [72–74].

Resources and future directions

The Endocrine Society has established a dedicated COVID-19 webpage with resources for clinicians and researchers with many other societies such as the European Society of Endocrinology and the Society for Endocrinology (► Table 2) [75].

This pandemic has led to a fast-tracking of telemedicine. Authorities in the US, Canada and France announced wider coverage of telemedicine visits, which is likely to directly benefit patients with DM [76, 77]. However, it is not known whether the telemedicine visits will suffice for insulin pump follow-up, which currently mandate inperson visits.

There are still many areas of uncertainty that warrant further investigation with respect to DM and COVID-19. Some of these include the differences between type 1 and type 2 DM, optimal vs. poor glycemic control, and the effect of age and other co-existing conditions in patients with DM among others.

Hypertension

Pathophysiology and risk

A high prevalence of HTN has been noted among patients with COVID-19, with HTN possibly predisposing to an elevated risk for more severe disease. The risk could stem from a variety of reasons. Foremost, HTN is associated with immune dysregulation, which manifests as higher IL-17 levels, abnormal natural killer cell function and cytotoxic T-cell anomalies partly reversible with mineralocorticoid receptor antagonists [78, 79]. Other contributors include overactive sympathetic drive, dysregulated NFκB and elevations in the pro-inflammatory peptide, angiotensin II (► Fig. 2) [80, 81].

A review of twelve studies, which included data from 8,635 patients with COVID-19, revealed the prevalence of HTN to be between 8.0 and 50.1% [median (IQR) %: 30.6 (17.43–33.50)] (► Table 1) [3, 6, 30–33, 35, 37, 39–43, 82, 83]. A US-based study reported a 50.1% prevalence of HTN [42]. Moreover, one study [34] of 191 patients found a 3-fold higher risk of mortality in patients with HTN while other studies revealed a 1.57–2.71-fold risk of severe COVID-19 illness [39, 84] (► Fig. 1). Shi et al. also included HTN as one of three indices in a COVID-19 risk assessment score [39]. This risk may be further enhanced by the co-existence of DM, which is present in 60.2–85.8% of persons with HTN (depending on the diagnostic threshold used) [85].

However, it should be noted that HTN is highly prevalent among the elderly, and the elderly are over-represented among COVID-19 patients requiring hospital admission and critical care. Thus, the risk attributed to HTN might be the result of reverse causality. The prevalence of HTN or DM may be greater in severe patients, but studies have failed to report if these comorbidities co-exist with others, hence increasing the risk for severity. Moreover, the associated risks currently remain associations. A comprehensive isolation of the exposure of HTN or DM has not been reported. Therefore the causal risk carried by these comorbidities individually, or together, has not been established and remains unclear.

Renin-angiotensin-aldosterone system and COVID-19

SARS-CoV-2 enters the human body through attachment to the ACE2 receptors that are present on the cell surface of type 2 alveolar epithelial cells in the lungs (► Fig. 2) [9, 86, 87]. These receptors are also present in other tissues, with tissue ACE2 levels not al-

► **Table 2** Endocrinology and COVID-19: Resources and Links.

Society	Resource	Web Link
American Association of Clinical Endocrinologists	Diabetes emergency plan (for patients)	http://mydiabetesemergencyplan.com
Endocrine Society	General resources for endocrinologists	https://www.endocrine.org
European Society of Endocrinology	General resources for endocrinologists	https://www.es-e-hormones.org
Society for Endocrinology	General resources for endocrinologists	https://www.endocrinology.org/clinical-practice/covid-19-resources-for-managing-endocrine-conditions
Society for Endocrinology	Adrenal insufficiency position statement	https://www.endocrinology.org/news/item/14050/Coronavirus-advice-statement-for-patients-with-adrenal %20pituitary-insufficiency
American Diabetes Association	Inpatient blood glucose management	https://care.diabetesjournals.org/content/43/Supplement_1/S193
American Thyroid Association	Frequently asked questions	https://www.thyroid.org/covid-19/coronavirus-frequently-asked-questions
National Osteoporosis Foundation	Patients and Providers Fact Sheet	https://cdn.nof.org/wp-content/uploads/NOF-COVID-Factsheet_.pdf
National Center for Transgender Equality	Plan of Action	https://transequality.org/covid19/plan
The National Institute of Diabetes and Digestive and Kidney Diseases	General guidelines	https://www.niddk.nih.gov/health-information/endocrine-diseases/adrenal-insufficiency-addisons-disease
Centers for Disease Control and Prevention	General guidelines	https://www.cdc.gov/coronavirus/2019-ncov/index.html
World Health Organization	General guidelines	https://www.who.int/emergencies/diseases/novel-coronavirus-2019

ways correlating with plasma ACE2 activity [88]. Although ACEi/ARBs do not directly affect ACE2 activity, some studies in experimental animal models have shown that ACEi/ARBs can upregulate the expression and activity of ACE2 in certain tissues including the heart and kidney, but studies regarding their effects on ACE2 expression and activity in the lungs are lacking [89, 90]. One study demonstrated increased intestinal messenger RNA levels of ACE2 in patients previously treated with ACEi but not in those treated with ARBs [91]. Equally, there are reports of higher ACE2 urinary levels in type 1 and 2 DM but the clinical implications of these findings remains unclear in the context of COVID-19 [70, 92, 93]. In light of these findings, it has been proposed that ACEi/ARBs could enhance the risk for severe COVID-19 and re-evaluating their use has been suggested [94–96]. On the contrary, higher plasma ACE2 may bind SARS-CoV-2 and protect against lung and other tissue injury (shown in animal models) and this is proposed as a therapeutic target [97]. Furthermore, angiotensin 1–7 uptitrated by the use of ACEi/ARBs may offer immunoprotection and attenuate the severity of COVID-19 by acting via the Mas receptor pathway (► Fig. 2) [98–101]. Similarly, ACEi may reduce angiotensin II levels and attenuate immunodysregulation [102]. This position is further supported by other recent reviews that point to the confusing nature of these unproven assertions regarding greater risk to COVID-19 patients taking ACEi/ARBs [98, 103–105]. No direct evidence to support the theoretical risk of ACEi/ARBs use with regards to COVID-19 severity has been published as of April 22, 2020. One clinical study reported milder COVID-19, improved immune function and lower viral loads in patients with HTN who were treated with ACEi/ARBs compared to those who were not [106] and better

clinical outcomes in another study [107]. These findings refute the theoretical concerns about these agents and support their continued use (► Table 2) [106, 107].

Various societies have endorsed the continued use of ACEi/ARBs based on the lack of evidence of harm (► Table 2). The European Society of Cardiology released a statement strongly recommending “*that patients and physicians continue their usual anti-hypertensive therapy because there is no clinical or scientific evidence to suggest that treatment with ACEi or ARBs should be discontinued because of the Covid-19 infection*” [108]. Many others followed suit (► Table 2) [108–112]. The American Heart Association recently published a white paper reporting the lack of studies investigating and demonstrating evidence of harm [103]. A clinical trial, ‘Recombinant Human Angiotensin Converting Enzyme 2 (rhACE2) as a Treatment for Patients With COVID-19’ (ClinicalTrials.gov Identifier: NCT04287686), is currently examining the role of ACE2 receptor modulation in COVID-19 and may provide conclusive evidence on this matter [113, 114].

Obesity

Pathophysiology and risk

Obesity is a state of chronic adipose tissue hypoxia leading to a pro-inflammatory state with increased levels of IL-1, IL-6, and TNF- α (► Figs. 2 and ► 3) [18, 115, 116]. The immunological dysfunction in obesity could also stem from T-cell insulin resistance and exhaustion [18]. We speculate that this would presumably lead to an altered immune response, not only to the virus but also to a future vaccine. One review raised the possibility of adipose tissue representing a SARS-CoV-2 target and reservoir, albeit no study reflect-

ing this has been published to date [117]. Another study demonstrated prolonged influenza viral shedding in obese persons [118]. Likewise, the alteration of myeloid and lymphoid responses within the adipose tissue consequently leads to an aberration of adipokine profiles [117, 119]. Similarly, obesity is linearly associated with raised C-reactive protein (CRP) levels, which is proximately triggered by adipocytic derived IL-6 [115, 120]. Not surprisingly, CRP has been correlated with severe disease, providing a pathophysiological link between obesity and poor COVID-19 outcomes [121, 122]. There is also evidence to suggest attenuated Mas receptor signaling (of angiotensin 1–7) within the renin-angiotensin-aldosterone system may further aggravate the pre-existing immune dysregulation [123, 124]. In addition, higher levels of pro-inflammatory DPP-4 levels seen in obesity and the consequent hyperinsulinemia may both independently exacerbate COVID-19 risks (► **Figs. 2** and ► **3**) [21]. While the benefits of DPP-4 inhibition are unproven, there is a clear anti-inflammatory and lung-protective effect of GLP-1 receptor analogues in obesity that may prove useful in mitigating risks for severe disease [71, 125]. Furthermore, co-existing obesity hypoventilation syndrome and obstructive sleep apnea, both complications of obesity, may compromise respiratory function that could also account for the observed effects. Moreover, obesity is independently linked with a higher thrombosis risk that is especially relevant as COVID-19 has an increased predilection for microangiopathy and venous thrombosis [126–128]. The latter, in conjunction with compromised cardiorespiratory reserve, may acutely impede mechanical ventilation of critically-ill obese persons. Furthermore, it is vital for future investigations to analyze the link between patients' anthropometric characteristics and severe COVID-19 since visceral adiposity is likely to represent a higher risk for COVID-19 illness [129]. On a more chronic basis, obesity poses an additional challenge both from a nursing and a rehabilitation standpoint [130].

Recently, the Louisiana Department of Health reported obesity as the third most common comorbidity (after DM and chronic kidney disease) associated with mortality, with a prevalence of 28% in COVID-19 non-survivors (► **Fig. 1**) [4]. Moreover, the CDC reported obesity being present in 48.3% of all COVID-19 hospitalized patients [6]. A review of three clinical studies, comprising of a total of 6,271 patients showed that obesity was prevalent in 35.8–48.3% [median (IQR)%: 41.7 (35.80–48.30)] of hospitalized COVID-19 patients (► **Table 1**) [6, 42, 43]. Another study noted obesity as an independent risk for COVID-19 hospitalization [131]. The National Health Service in the UK also reported obesity as a risk factor for severe disease and mortality in COVID-19 [5]. In light of these data, the CDC updated their guidance to include a BMI > 40 kg/m² as a risk factor for severe COVID-19 [8].

Common 'Bad' actors in metabolic disease related cytokine storm

It is important to consider the cumulative pathophysiology of commonly described endocrinopathies and COVID-19 severity. In this section, we discuss plausible underlying mechanisms for severe COVID-19 in hosts with these conditions.

Betacoronaviruses, including SARS-CoV-2, enter human cells by binding to ACE2 in various tissues. However, betacoronaviruses such as MERS-CoV and SARS-CoV also directly infect immune cells.

Specifically, MERS-CoV binds to monocytes and dendritic cells and SARS-CoV affects T-cells through DPP-4 receptors [132]. After being exposed to a betacoronavirus, monocytes, macrophages and dendritic cells release the proinflammatory cytokine IL-6. IL-6 has two major modes of pleiotropic signaling (*cis* and *trans*) [133]. *Cis*-signaling occurs when IL-6 attaches to its membrane bound receptors (mIL-6R) present on immune cells, triggering activation of other immune pathway cells such as T-cells, B-cells and natural killer cells and leading to further IL-6 release and immune activation. Pathological activation of this signaling leads to a cytokine release syndrome (CRS). *Trans*-signaling occurs when IL-6 binds to its soluble receptor (sIL-6R) that is present in vascular endothelium. This triggers the release of vascular endothelial growth factor (VEGF) and monocyte chemoattractant protein-1 (MCP-1). Together with reduction of E-cadherin, the result is increased vascular permeability and leakage causing syndromes such as CRS, acute respiratory distress syndrome (ARDS) and shock [134]. A third pathological signaling mechanism is the *trans*-pathway (distinct from *trans*-signaling), which is mediated by attachment of IL-6 on T-helper 17 cells, which leads to pathological consequences such as ARDS [132].

The 'bad' actors of immune dysregulation are increased in obesity, DM and HTN and may account for the severity of disease. For instance, IL-6 levels are significantly higher in type 1 and 2 DM and directly proportional to BMI in obese persons [115, 120, 135]. IL-6 has a bidirectional relationship with DM as it is implicated in causing insulin resistance and disorders of glucose homeostasis [136]. T-cells in type 1 DM are more sensitive to IL-6 possibly leading to immune dysregulation and CRS [137]. In HTN, IL-6 levels are higher, likely mediated by the increased levels of angiotensin II and aldosterone, which directly trigger IL-6 secretion by the vasculature [138]. This effect is blocked by ARBs and mineralocorticoid receptor antagonists [139]. Elevated CRP, another predictor of COVID-19 severity, is a downstream effect of IL-6, and elevated in obesity, DM and HTN [140]. DPP-4, a known co-receptor of beta-coronaviruses is higher in persons with obesity and DM, and has independent pro-inflammatory effects [20]. Finally, the possibility of the pathological *trans*-pathway signaling of IL-6 in obesity, DM and HTN cannot be excluded given the pre-existing immune-dysregulatory state, and may contribute to CRS and clinical consequences such as ARDS. Taken together, the 'bad actors' of immune dysregulation linked with severe COVID-19 are highly prevalent in obesity, DM and HTN, and may account for the higher severity noted in these states. ► **Fig. 3** describes the immune-pharmacology of endocrine conditions and COVID-19.

Other endocrinopathies

Hypothalamic-pituitary-adrenal axis

Glucocorticoids have both immune-stimulatory and -inhibitory effects [141]. During the initial phase of viral infection, glucocorticoids prime the immune response to counteract foreign antigens. However, in the advanced phase of viral infection, blunting of the hypothalamic-pituitary-adrenal axis activation may occur that may lead to glucocorticoid insufficiency in the critical illness setting [141]. Given the widespread use of glucocorticoids and the possible risk to patients with adrenal insufficiency (AI), the Society for

Endocrinology released an advisory statement conveying the lack of evidence to support a higher risk for contracting COVID-19 in patients with AI (► **Table 2**). They also reinforced sick-day glucocorticoid dosing and physical distancing rules as these patients may theoretically be at a higher risk for COVID-19 complications and mortality due to adrenal crisis, although this has yet to be described [142]. A recent opinion piece also highlighted the increased risks faced by patients taking physiological and supraphysiological doses of glucocorticoids and encouraged identification of these patients and counseling about possible risks and precautions [143]. Patients with AI are at an elevated risk of infection, and patients with primary AI have been shown to have significantly decreased natural killer cell cytotoxicity that may compromise early recognition and elimination of virally infected cells and impair anti-viral immune defenses, although COVID-19 specific infection risk has not been reported to date [144]. Recently, COVID-19 specific guidance for the management of AI was published that advised specific sick-day rules in addition to reinforcing the importance of education and physical distancing [145]. This guidance recommended that adults with AI on physiological glucocorticoids and acute suspected or confirmed COVID-19 should double their morning hydrocortisone dose and then take 20mg hydrocortisone every 6 hours in order to provide evenly spaced glucocorticoid coverage for the persistent acute inflammation and often continuous fever experienced by patients with COVID-19. Those taking prednisone 5–15 mg daily should take 10mg every twelve hours while those on doses of prednisone > 15 mg should continue to take their usual daily prednisone dose but should split this into a morning and afternoon dose of at least 10mg each. Once the patient shows resolution of fever and significant clinical improvement, the hydrocortisone dose can be tapered to double the physiologic replacement dose and then normal routine doses when fully recovered. If the clinical symptoms and signs of COVID-19 worsen, it is recommended that patients contact emergency medical services and administer a subcutaneous or intramuscular injection of hydrocortisone 100 mg (or take 50–100 mg hydrocortisone orally if this injection is not available) [145]. Those with AI who contract COVID-19 and require mechanical ventilation or are severely ill, should be dosed according to acute stress dosing guidelines (► **Table 2**) [145]. Additionally, the use of venous thromboembolism prophylaxis with heparin in patients receiving glucocorticoids is recommended, given the increased risk of thrombotic events in COVID-19 [141]. Furthermore, an increased risk to those with posterior pituitary deficits and electrolyte abnormalities has been logically speculated and the need to stock reasonable supplies emphasized [143].

In another piece, addressing the management of Cushing syndrome during the COVID-19 pandemic, deferring biochemical workup for mild Cushing syndrome, appropriate management of comorbidities, risk-benefit assessment of definitive treatment (pharmacotherapy and surgery), and *Pneumocystis jiroveci* prophylaxis were emphasized [146]. According to the authors, for those on maintenance pharmacotherapy, dose titration according to clinical features or on the basis of the most recent biochemical values is reasonable [146]. Authors also advised postponement of imaging and localization studies for suspected (mild) cases. Further, they recommended urgent treatment only in sight- or life-threatening

situations and reinforcement of sick-day rules, highlighting the need to re-evaluate the care of these patients once the current pandemic abates or is under control in the local geographical region [146].

Hypothalamic-pituitary-thyroid axis

It is known that ACE2 receptors are expressed in thyroid tissue and play a critical role in physiological processes [147]. An overexpression of ACE2 has also been implicated in thyroid cancer progression [147]. In hyperthyroid animals, cardiac angiotensin 1–7 activity was augmented, suggesting a renin-angiotensin-aldosterone system regulating effect of thyroid hormones [148]. In observational studies, thyroid abnormalities, including sick euthyroid syndrome and thyroiditis, were reported in 3.6% of patients [108] and other endocrine disorders (excluding DM and HTN) were present in 13% of COVID-19 patients [34]. Direct damage to thyroid tissue from COVID-19 has also been reported at autopsy [149]. Thyroid disorders were also linked with a higher mortality risk in one report [150]. From a clinical practice standpoint, structural thyroid disease management warrants careful consideration. In particular, we agree with one opinion piece that suggested prioritization of suspected anaplastic and aggressive medullary thyroid cancer (serum calcitonin ≥ 10 pg/ml) while deferring the care of less aggressive differentiated thyroid cancer [151].

Diabetes insipidus

Central and nephrogenic diabetes insipidus (DI) pose a particular challenge due to reduced availability of laboratory (electrolyte) testing. An opinion piece recently highlighted this challenge, encouraging the practice of once a week aquaresis by omitting one dose of vasopressin in individuals with existing DI [152]. This would primarily prevent retention of excess free water and consequently maintain eunatremia. Further, they emphasized that the major risk in these patients is that of hyponatremia, which could be mitigated by daily bodyweight measurements, early self-recognition of clinical features of hyponatremia and counseling patients about drinking to thirst. In the inpatient setting, patients are vulnerable to hyponatremia both due to overtreatment of DI, and excess vasopressin from COVID-19 pneumonia in the context of syndrome of inappropriate antidiuretic hormone secretion [153]. For that reason, 0.9% saline should be used for volume resuscitation, and in the critical illness setting where frequent shifts in volume distribution occurs. Moreover, frequent clinical and biochemical assessment of sodium status should occur, while hypotonic fluids should be employed in hypernatremic patients [152]. Special caution should be exercised in the care of adipsic DI patients and endocrinology consultants should be involved early in their inpatient care [152].

Bone and mineral metabolism

While there is no evidence of increased risk of COVID-19 to patients with bone-mineral metabolism disorders, the unprecedented global lockdowns have significantly affected their care. Given that most infusion centers, outpatient laboratories and bone scanning centers are temporarily closed, the National Osteoporosis Foundation released a guidance statement (► **Table 2**) [154]. It is advisable for those on medications such as Denosumab and Romosozumab to receive timely infusions, however, infusions of bisphospho-

nates such as Zolendronic acid may be deferred due to their long half-life [154].

Hyperlipidemia

Hyperlipidemia was present in 5% of patients according to a review of 190 patients hospitalized with COVID-19 [31]. The development of metabolic/lipid abnormalities in patients who recover from COVID-19 may also be anticipated based on data from the SARS cohort population [47]. Endocrinologists may be healthcare providers for this group in the future and should be wary of the possible long-term metabolic complications that may exist following COVID-19 infection.

Racial differences in COVID-19 outcomes

Several reports of higher mortality among Black and Hispanic people have emerged [155, 156]. The CDC recently reported that 33% of COVID-19 inpatients in the US were Black despite only constituting 13% of the US population [6]. The state of Louisiana reported that Black and Asian patients constituted 59% and 0.83% of COVID-19 non-survivors [157]. New York City also reported a disproportionate mortality among Hispanics and Blacks [158]. While ACE2 expression is higher in Asian populations compared to Whites or Blacks, our current knowledge of these differences does not justify the disproportionate mortality [159, 160]. This scourge is likely multifactorial: 1. Higher genetic predisposition to endocrine disorders, such as an increased prevalence of HTN in Black and obesity among Latin/Hispanic patients and 2. Racial disparity in access to healthcare and hospitals that may delay timely care, coupled with suboptimally controlled underlying chronic disease. The CDC surveillance data of the COVID-19-associated hospitalization rate among patients for the 4-week period ending March 28, 2020, was 4.6 per 100 000 population, with the following race/ethnicity data: 261 (45.0%) were non-Hispanic white (White), 192 (33.1%) were non-Hispanic Black (Black), 47 (8.1%) were Hispanic, 32 (5.5%) were Asian, two (0.3%) were American Indian/Alaskan Native, and 46 (7.9%) were of other or unknown race [6]. These social barriers for racial minorities amplify their vulnerability to endocrine disease in general and to COVID-19 as a consequence.

Sex differences in COVID-19 outcomes

In the US, over half of COVID-19 related hospitalizations occurred among men (5.1 vs. 4.1 per 100 000 population). Sex differences for general infections are likely multifactorial, including robustness of the immune responses (both innate and adaptive), sex-dependent production of steroid hormones (including testosterone and estrogens), immune response-related X-linked genes, and presence of disease susceptibility genes. The estrogen receptor signaling pathway has been identified as critical for protection in females infected with coronaviruses [151]. A plausible explanation for higher COVID-19 affection of men may be related to the downstream steps after ACE2 binding of SARS-CoV-2. As described previously, the SARS-CoV-2 viral capsid binds to surface ACE2 and subsequently engages a cellular serine protease TMPRSS2 for protein priming (► Fig. 2) [10]. From oncological studies, it is known that TMPRSS2 is an androgen responsive gene, which is highly expressed in men [161]. As suggested by one study, the higher TMPRSS2 expression in men could account for their higher vulnerability to COVID-19

[161]. Further studies are required to ascertain the sex differences in COVID-19 related outcomes.

Care of transgender persons

Human immunodeficiency virus (HIV) infection and cancer are more frequent in transgender persons when compared to the general population [162, 163]. These conditions coupled with pre-existing endocrinopathies can compromise the immune function, presumably leading to a higher COVID-19 risk in transgender persons. However, there is currently no published evidence to support this [162]. Transgender persons also frequently face social challenges such as poverty, homelessness and inadequate access to healthcare, which diminishes their ability to observe COVID-19 precautions and seek timely care [164]. It is therefore advisable that clinicians re-inforce and individualize guidance to this population while ensuring sufficient prescription refills. A plan of action is available at <https://transequality.org/covid19/plan> (► Table 2) [164]. For elective procedures such as gender confirmation surgery, postponement is appropriate in line with the CDC and WHO guidelines [48, 49].

General COVID-19 precautions for patients with endocrine conditions

- All patients should maintain updated contact information for their healthcare
- Adequate availability of prescription refills should be ensured
- Emergency precautions and sick-day rules should be addressed on all routine clinic visits
- Providers should remain up to date with evolving COVID-19 data and perform a careful critical appraisal of the available and increasing literature to be able to identify high-quality evidence to facilitate informed decisions to individualize care
- Elective endocrine clinic visits should be deferred and alternative communication means such as telehealth visits consistent with social distancing should be encouraged
- Mailing of prescriptions rather than inperson pickup should be adopted wherever feasible
- Patients should be advised to stay updated with recommended vaccinations
- Smoking (including hookah/waterpipe) cessation should be advised [165]
- Panic buying and stockpiling of medical supplies should be strongly discouraged
- Patients should be informed of COVID-19 resources (CDC, WHO websites etc.) to obtain accurate information and follow best practices with respect to COVID-19 (► Table 2)

Conclusion

In conclusion, endocrinologists routinely care for a high proportion of COVID-19 vulnerable patients who are at increased risk for life-threatening complications. Clinicians should counsel patients on emergency preparedness, contingency plans, maintaining adequate but not excessive supplies, social distancing and accessing reliable information resources. Further, care should only be based on available evidence and caution should be exercised against basing decisions on incomplete or inconclusive evidence. These meas-

ures may mitigate some of the risks faced by our vulnerable patient population in this unprecedented crisis.

Authors' Disclaimer

To the best knowledge of the authors, the studies included in this article report data from distinct patient populations consistent with ethical scientific publication, a matter of concern in recent times [166]. Additionally, due to the ongoing COVID-19 crisis this document is not based on extensive systematic review or meta-analysis, but on expert consensus. The document should be considered as guidance only; it is not intended to determine an absolute standard of medical care. The doctors concerned must make the management plan for an individual patient

Funding Information

This work was funded by the intramural research program of the National Institutes of Health.

Conflict of Interest

The authors declare that they have no conflict of interest. Dr. Stratakis laboratory holds patents on the function of the PRKAR1A, PDE11A, and GPR101 molecules and has received research funding from Pfizer Inc. for work related to GPR101 and acromegaly/gigantism.

References

- [1] WHO Director-General's opening remarks at the media briefing on COVID-19; 11 March 2020 (press release); 2020
- [2] Coronavirus disease (COVID-2019) situation reports (press release). Online, March 16, 2020
- [3] Zhou F, Yu T, Du R et al. Clinical course and risk factors for mortality of adult inpatients with COVID-19 in Wuhan, China: A retrospective cohort study. *Lancet* 2020; 395: 1054–1062
- [4] Health LDo. Louisiana Department of Health Updates for 3/27/2020 Online: ldh.la.gov; 2020 cited Louisiana Department of Health. Available from <http://ldh.la.gov/index.cfm/newsroom/detail/5517>
- [5] Center ICNAAR. Report on 775 patients critically ill with COVID-19 2020; updated March 27, 2020. Available from <https://www.icnarc.org/About/Latest-News/2020/03/27/Report-On-775-Patients-Critically-Ill-With-Covid-19>
- [6] Garg S, Kim L, Whitaker M et al. Hospitalization Rates and Characteristics of Patients Hospitalized with Laboratory-Confirmed Coronavirus Disease 2019 – COVID-NET, 14 States, March 1–30, 2020. *MMWR Morb Mortal Wkly Rep* 2020; 69: 458–464
- [7] WHO. Q & A on coronaviruses (COVID-19) (Guidance). 2020; updated March 9, 2020. Available from <https://www.who.int/news-room/q-a-detail/q-a-coronaviruses>
- [8] Prevention CfDca. People who are at higher risk for severe illness. Online; 2020 March 26, 2020
- [9] Wan Y, Shang J, Graham R et al. Receptor recognition by the novel coronavirus from Wuhan: An analysis based on decade-long structural studies of SARS coronavirus. *J Virol* 2020; 94: e00127–20 doi: 10.1128/JVI.00127-20
- [10] Hoffmann M, Kleine-Weber H, Schroeder S et al. SARS-CoV-2 cell entry depends on ACE2 and TMPRSS2 and is blocked by a clinically proven protease inhibitor. *Cell* 2020; 181: e8
- [11] Muniyappa R, Gubbi S. COVID-19 pandemic, corona viruses, and diabetes mellitus. *Am J Physiol Endocrinol Metab* 2020; 318: E736–E741
- [12] Roca-Ho H, Riera M, Palau V et al. Characterization of ACE and ACE2 expression within different organs of the NOD mouse. *Int J Mol Sci* 2017; 18: 563
- [13] Salem ESB, Grobe N, Elased KM. Insulin treatment attenuates renal ADAM17 and ACE2 shedding in diabetic Akita mice. *Am J Physiol Renal Physiol* 2014; 306: F629–F639
- [14] Yang JK, Lin SS, Ji XJ et al. Binding of SARS coronavirus to its receptor damages islets and causes acute diabetes. *Acta Diabetol* 2010; 47: 193–199
- [15] Zhang W, Xu Y-Z, Liu B et al. Pioglitazone upregulates angiotensin converting enzyme 2 expression in insulin-sensitive tissues in rats with high-fat diet-induced nonalcoholic steatohepatitis. *Sci World J* 2014; 603409
- [16] Calvet HM, Yoshikawa TT. Infections in Diabetes. *Infect Dis Clin North Am* 2001; 15: 407–421
- [17] Geerlings SE, Hoepelman AIM. Immune dysfunction in patients with diabetes mellitus [DM]. *FEMS Immunol Med Microbiol* 1999; 26: 259–265
- [18] Daryabor G, Kabelitz D, Kalantar K. An update on immune dysregulation in obesity-related insulin resistance. *Scand J Immunol* 2019; 89: e12747
- [19] Varin EM, Mulvihill EE, Beaudry JL et al. Circulating levels of soluble dipeptidyl peptidase-4 are dissociated from inflammation and induced by enzymatic DPP4 inhibition. *Cell Metab.* 2019; 29: e5
- [20] Anoop S, Misra A, Bhatt SP et al. High circulating plasma dipeptidyl peptidase-4 levels in non-obese Asian Indians with type 2 diabetes correlate with fasting insulin and LDL-C levels, triceps skinfolds, total intra-abdominal adipose tissue volume and presence of diabetes: A case–control study. *BMJ Open Diabetes Res Care* 2017; 5: e000393 doi: 10.1136/bmjdr-2017-000393
- [21] Stengel A, Goebel-Stengel M, Teuffel P et al. Obese patients have higher circulating protein levels of dipeptidyl peptidase IV. *Peptides* 2014; 61: 75–82
- [22] Ryskjaer J, Deacon CF, Carr RD et al. Plasma dipeptidyl peptidase-IV activity in patients with type-2 diabetes mellitus correlates positively with HbA1c levels, but is not acutely affected by food intake. *Eur J Endocrinol* 2006; 155: 485–493
- [23] Kleine-Weber H, Schroeder S, Krüger N et al. Polymorphisms in dipeptidyl peptidase 4 reduce host cell entry of Middle East respiratory syndrome coronavirus. *Emerg Microbes Infect* 2020; 9: 155–168
- [24] Raj VS, Mou H, Smits SL et al. Dipeptidyl peptidase 4 is a functional receptor for the emerging human coronavirus-EMC. *Nature* 2013; 495: 251–254
- [25] Iacobellis G. COVID-19 and diabetes: Can DPP4 inhibition play a role? *Diabetes Res Clin Pract* 2020; 162: 108125
- [26] Makdissi A, Ghanim H, Vora M et al. Sitagliptin exerts an anti-inflammatory action. *J Clin Endocrinol Metab* 2012; 97: 3333–3341
- [27] Zhuge F, Ni Y, Nagashimada M et al. DPP-4 inhibition by linagliptin attenuates obesity-related inflammation and insulin resistance by regulating M1/M2 macrophage polarization. *Diabetes* 2016; 65: 2966–2979
- [28] Mehta P, McAuley DF, Brown M et al. COVID-19: Consider cytokine storm syndromes and immunosuppression. *Lancet* 2020; 395: 1033–1034

- [29] Yang X, Yu Y, Xu J et al. Clinical course and outcomes of critically ill patients with SARS-CoV-2 pneumonia in Wuhan, China: A single-centered, retrospective, observational study. *Lancet. Respir Med* 2020; doi: [org/10.1016/S2213-6000\(20\)30079-5](https://doi.org/10.1016/S2213-6000(20)30079-5)
- [30] Huang C, Wang Y, Li X et al. Clinical features of patients infected with 2019 novel coronavirus in Wuhan, China. *Lancet* 2020; 395: 497–506
- [31] Zhang JJ, Dong X, Cao YY et al. Clinical characteristics of 140 patients infected with SARS-CoV-2 in Wuhan, China *Allergy* 2020; doi: 10.1111/all.14238
- [32] Wang D, Hu B, Hu C et al. Clinical characteristics of 138 hospitalized patients with 2019 novel coronavirus-infected pneumonia in Wuhan, China. *JAMA* 2020; 323: 1061–1069
- [33] Xu XW, Wu XX, Jiang XG et al. Clinical findings in a group of patients infected with the 2019 novel coronavirus [SARS-Cov-2] outside of Wuhan, China: Retrospective case series. *BMJ* 2020; 368: m606
- [34] Chen N, Zhou M, Dong X et al. Epidemiological and clinical characteristics of 99 cases of 2019 novel coronavirus pneumonia in Wuhan, China: A descriptive study. *Lancet* 2020; 395: 507–513
- [35] Lu R, Zhao X, Li J et al. Genomic characterisation and epidemiology of 2019 novel coronavirus: Implications for virus origins and receptor binding. *Lancet* 2020; 395: 565–574
- [36] Cao B, Wang Y, Wen D et al. A Trial of lopinavir-ritonavir in adults hospitalized with severe Covid-19. *N Engl J Med* 2020; doi: 10.1056/NEJMoa2001282
- [37] Chen C, Chen C, Yan JT et al. Analysis of myocardial injury and cardiovascular disease in critically ill patients with new type of coronavirus pneumonia (J/OL). *Chin J Cardiovasc Dis* 2020; 48 doi: 10.3760/cma.j.cn112148-20200225-00123
- [38] Arentz M, Yim E, Klaff L et al. Characteristics and outcomes of 21 critically ill patients with COVID-19 in Washington State. *JAMA*. 2020; 323: 1612–1614
- [39] Shi Y, Yu X, Zhao H et al. Host susceptibility to severe COVID-19 and establishment of a host risk score: Findings of 487 cases outside Wuhan. *Critical Care* 2020; 24: 108
- [40] Qian GQ, Yang NB, Ding F et al. Epidemiologic and clinical characteristics of 91 hospitalized patients with COVID-19 in Zhejiang, China: A retrospective, multi-centre case series. *QJM* 2020; pii: heaqa089; doi: 10.1093/qjmed/hcaa089
- [41] Chan JF-W, Yuan S, Kok K-H et al. A familial cluster of pneumonia associated with the 2019 novel coronavirus indicating person-to-person transmission: a study of a family cluster. *Lancet* 2020; 395: 514–523
- [42] Goyal P, Choi JJ, Pinheiro LC et al. Clinical characteristics of Covid-19 in New York City. *N Eng J Med* 2020; doi: 10.1056/NEJMc2010419
- [43] Richardson S, Hirsch JS, Narasimhan M et al. Presenting Characteristics, Comorbidities, and Outcomes Among 5700 Patients Hospitalized With COVID-19 in the New York City Area. *JAMA* 2020; doi: 10.1001/jama.2020.6775
- [44] Novel Coronavirus Pneumonia Emergency Response Epidemiology Team. The epidemiological characteristics of an outbreak of 2019 novel coronavirus diseases (COVID-19) in China. *Chin J Epidemiol* 2020; 41: 145–151
- [45] Guo W, Li M, Dong Y et al. Diabetes is a risk factor for the progression and prognosis of COVID-19. *Diabetes Metab Res Rev* 2020; e3319
- [46] Bode B, Garrett V, Messler J et al. Glycemic Characteristics and Clinical Outcomes of COVID-19 Patients Hospitalized in the United States glytecsystems.com; 2020 [updated April 12, 2020; cited 2020 April 30]. Available from https://glytecsystems.com/wp-content/uploads/Sage.Glycemic-Characteristics-and-Clinical-Outcomes-of-Covid-19-Patients.FINAL_.pdf
- [47] Wu Q, Zhou L, Sun X et al. Altered lipid metabolism in recovered SARS patients twelve years after infection. *Sci Rep* 2017; 7: 9110
- [48] Prevention CfDca. Interim Clinical Guidance for Management of Patients with Confirmed Coronavirus Disease (COVID-19) (ONLINE). Online 2020 (March 15, 2020). Guidelines for COVID-19 management. Available from <https://www.cdc.gov/coronavirus/2019-ncov/hcp/clinical-guidance-management-patients.html>
- [49] WHO Clinical management of severe acute respiratory infection when novel coronavirus (nCoV) infection is suspected 2020 (cited 2020 March 15). Guidelines. Available at <https://www.who.int/docs/default-source/coronaviruse/clinical-management-of-novel-cov.pdf>
- [50] Bornstein SR, Dalan R, Hopkins D et al. Endocrine and metabolic link to coronavirus infection. *Nat Rev Endocrinol* 2020; doi: 10.1038/s41574-020-0353-9
- [51] Marshall AC, Shaltout HA, Nautiyal M et al. Fetal betamethasone exposure attenuates angiotensin-[1-7]-Mas receptor expression in the dorsal medulla of adult sheep. *Peptides* 2013; 44: 25–31
- [52] Zhou YH, Qin YY, Lu YQ et al. Effectiveness of glucocorticoid therapy in patients with severe novel coronavirus pneumonia: Protocol of a randomized controlled trial. *Chin Med J (Engl)* 2020; 133: 1080–1086
- [53] Association AD COVID-19 from the American Diabetes Association (Online). ADA; 2020 March 2020:Webpage9. Available from <https://www.diabetes.org/diabetes/treatment-care/planning-sick-days/coronavirus>
- [54] AACE Position Statement: Coronavirus [COVID-19] and People with Diabetes (Updated March 18, 2020) (press release). Online: [aace.com](https://www.aace.com), March 18, 2020
- [55] American College of Endocrinology L, Novo Nordisk, Medtronic. My Diabetes Emergency Plan. Online: [mydiabetesemergencyplan.com](https://www.mydiabetesemergencyplan.com); 2016
- [56] Katulanda P, Dissanayake H, Ranathunga I et al Prevention and management of COVID-19 among patients with diabetes: An appraisal of the literature. *Diabetologia* 2020; doi: 10.1007/s00125-20-05164-x
- [57] Prevention CfDca. Vaccine information for adults: Diabetes type 1 and 2/2016 March 18, 2020 (cited 2020 March 18). Available from <https://www.cdc.gov/vaccines/adults/rec-vac/health-conditions/diabetes.html>
- [58] Smith SA, Poland GA. Influenza and pneumococcal immunization in diabetes. *Diabetes Care* 2004; 27 (Suppl 1): S111–S113
- [59] Shah N. Higher co-infection rates in COVID19. *Coronavirus (Internet)*. 2020 (cited 2020 March 18). Available from <https://medium.com/@nigam/higher-co-infection-rates-in-covid19-b24965088333>
- [60] Mueller L. Buying Insulin in Canada Without a Prescription (BTC) (Electronic).Online2017 (updated September 1, 2017; cited 2020 March 18). Drug Commentary. Available from <https://www.pharmacycheckerblog.com/buying-insulin-canada-without-prescription>
- [61] Tribble SJ You Can Buy Insulin Without A Prescription, But Should You? (Electronic). Online2015 (updated December 14, 2015; cited 2020 March 18). Health Guide. Available from <https://www.npr.org/sections/health-shots/2015/12/14/459047328/you-can-buy-insulin-without-a-prescription-but-should-you>
- [62] PG Buying Insulin (India) (Internet). P G, editor. Online2007 October 11, 2007. (cited 2020 March 18, 2020). Available from <https://www.indiamike.com/india/health-and-well-being-in-india-f2/buying-insulin-t44927/#post392426>
- [63] Fletcher F. Has anyone traveled to Mexico to buy their supplies? March 18. 2020 Ed OnlineForum.tdiabetes.org; 2017
- [64] Association AD 13 Diabetes Care in the Hospital. *Diabetes Care* 2016; 39 (Suppl 1): S99
- [65] Cansu DÜ, Korkmaz C. Hypoglycaemia induced by hydroxychloroquine in a non-diabetic patient treated for RA. *Rheumatology* 2008; 47: 378–379

- [66] Goyal V, Bordia A. The hypoglycemic effect of chloroquine. *J Assoc Physicians India* 1995; 43: 17–18
- [67] Lee GA, Seneviratne T, Noor MA et al. The metabolic effects of lopinavir/ritonavir in HIV-negative men. *AIDS (London, England)* 2004; 18: 641–649
- [68] Hansen TK, Thiel S, Wouters PJ et al. Intensive insulin therapy exerts antiinflammatory effects in critically ill patients and counteracts the adverse effect of low mannose-binding lectin levels. *J Clin Endocrinol Metab* 2003; 88: 1082–1088
- [69] Viby NE, Isidor MS, Buggeskov KB et al. Glucagon-like peptide-1 [GLP-1] reduces mortality and improves lung function in a model of experimental obstructive lung disease in female mice. *Endocrinology* 2013; 154: 4503–4511
- [70] Drucker DJ. Coronavirus infections and type 2 diabetes-shared pathways with therapeutic implications. *Endocr Rev* 2020; 41 pii: bnaa011 doi: 10.1210/edrv/bnaa011
- [71] Zhou F, Zhang Y, Chen J et al. Liraglutide attenuates lipopolysaccharide-induced acute lung injury in mice. *Eur J Pharmacol* 2016; 791: 735–740
- [72] World B Retailers call for rationing of rubbing alcohol, hand sanitizer 2020 March 18, 2020 (cited 2020 March 18). Available from <https://www.msn.com/en-ph/money/topstories/retailers-call-for-rationing-of-rubbing-alcohol-hand-sanitizer/ar-BB112Ky?li=BB8Mkm>
- [73] Baker J. Extra insulin supplies, medications advised for people with diabetes in wake of COVID-19. *Endocrine Today (Internet)*. 2020; (cited 2020 March 21). Available from <https://www.healio.com/endocrinology/diabetes/news/online/%7B19b3e970-b54c-499b-8cfa-01591e7bcd6b%7D/extra-insulin-supplies-medications-advised-for-people-with-diabetes-in-wake-of-covid-19>
- [74] Administration UFA. Current and Resolved Drug Shortages and Discontinuations Reported to FDA 2020 (cited 2020 April 21). Available from <https://www.accessdata.fda.gov/scripts/drugshortages/>
- [75] Society E COVID-10 Member Resources and Communications (Electronic). www.endocrine.org 2020 (updated March 25, 2020; cited 2020 March 25). Available from <https://www.endocrine.org/membership/covid-19-member-resources-and-communications>
- [76] Services CfMM. President Trump Expands Telehealth Benefits for Medicare Beneficiaries During COVID-19 Outbreak. Online: CMS. 2020; March 17: 2020
- [77] Ministry of Solidarity and Health F. COVID-19 and telehealth: who can practice remotely and how? Online 2020 (updated March 31, 2020). Available from <https://solidarites-sante.gouv.fr/soins-et-maladies/maladies/maladies-infectieuses/coronavirus/professionnels-de-sante/article/covid-19-et-tele-sante-qui-peut-pratiquer-a-distance-et-comment>
- [78] Singh MV, Chapple MW, Harwani SC et al. The immune system and hypertension. *Immunol Res* 2014; 59: 243–253
- [79] Amador CA, Barrientos V, Pena J et al. Spironolactone decreases DOCA-salt-induced organ damage by blocking the activation of T helper 17 and the downregulation of regulatory T lymphocytes. *Hypertension* 2014; 63: 797–803
- [80] Kvakan H, Luft FC, Muller DN. Role of the immune system in hypertensive target organ damage. *Trends Cardiovasc Med* 2009; 19: 242–246
- [81] Abboud FM, Harwani SC, Chapple MW. Autonomic neural regulation of the immune system: implications for hypertension and cardiovascular disease. *Hypertension* 2012; 59: 755–762
- [82] Guan W-j, Ni Z-y, Hu Y et al. Clinical Characteristics of Coronavirus Disease 2019 in China. *N Eng J Med* 2020; 382: 1708–1720
- [83] Chen C, Chen C, Jiangtao Y et al. Analysis of myocardial injury and cardiovascular diseases in critical patients with new Coronavirus pneumonia. *Chin J Cardiovasc Dis* 2020; 48
- [84] Guan W-j, Liang W-h, Zhao Y et al. Comorbidity and its impact on 1590 patients with Covid-19 in China: A nationwide analysis. *Eur Respir J* 2020; 2000547
- [85] Kabakov E, Norymberg C, Osher E et al. Prevalence of hypertension in type 2 diabetes mellitus: impact of the tightening definition of high blood pressure and association with confounding risk factors. *J Cardiometab Syndr* 2006; 1: 95–101
- [86] Turner AJ, Hiscox JA, Hooper NM. ACE2: from vasoepitaxase to SARS virus receptor. *Trends Pharmacol Sci* 2004; 25: 291–294
- [87] Yan R, Zhang Y, Li Y et al. Structural basis for the recognition of SARS-CoV-2 by full-length human ACE2. *Science* 2020; 367: 1444
- [88] Ramchand J, Patel SK, Kearney LG et al. Plasma ACE2 activity predicts mortality in aortic stenosis and is associated with severe myocardial fibrosis. *JACC Cardiovasc Imaging* 2020; 13: 655–664
- [89] Ferrario CM, Jessup J, Chappell MC et al. Effect of angiotensin-converting enzyme inhibition and angiotensin II receptor blockers on cardiac angiotensin-converting enzyme 2. *Circulation* 2005; 111: 2605–2610
- [90] Soler MJ, Ye M, Wysocki J et al. Localization of ACE2 in the renal vasculature: amplification by angiotensin II type 1 receptor blockade using telmisartan. *Am J Physiol Renal Physiol* 2009; 296: F398–F405
- [91] Vuille-dit-Bille RN, Camargo SM, Emmenegger L et al. Human intestine luminal ACE2 and amino acid transporter expression increased by ACE-inhibitors. *Amino Acids* 2015; 47: 693–705
- [92] Burns KD, Lytvyn Y, Mahmud FH et al. The relationship between urinary renin-angiotensin system markers, renal function, and blood pressure in adolescents with type 1 diabetes. *Am J Physiol Renal Physiol* 2017; 312: F335–F342
- [93] Gutta S, Grobe N, Kumbaji M et al. Increased urinary angiotensin converting enzyme 2 and nephrilysin in patients with type 2 diabetes. *Am J Physiol Renal Physiol* 2018; 315: F263–F274
- [94] Zheng YY, Ma YT, Zhang JY et al. COVID-19 and the cardiovascular system. *Nat Rev Cardiol* 2020; 17: 259–260
- [95] Fang L, Karakiulakis G, Roth M. Are patients with hypertension and diabetes mellitus at increased risk for COVID-19 infection? *Lancet Respir Med* 2020; 8: e21. doi: 10.1016/S2213-2600(20)30116-8
- [96] Diaz JH. Hypothesis: angiotensin-converting enzyme inhibitors and angiotensin receptor blockers may increase the risk of severe COVID-19. *J Travel Med* 2020; pii: taaa041 doi: 10.1093/jtm/taaa041
- [97] Imai Y, Kuba K, Rao S et al. Angiotensin-converting enzyme 2 protects from severe acute lung failure. *Nature* 2005; 436: 112–116
- [98] South AM, Tomlinson L, Edmonston D et al. Controversies of renin-angiotensin system inhibition during the COVID-19 pandemic. *Nat Rev Nephrol* 2020; doi: 10.1038/s41581-020-0279-4
- [99] Peiró C, Moncada S. Substituting Angiotensin-[1-7] to Prevent Lung Damage in SARS-CoV2 Infection? *Circulation* 2020; doi: 10.1161/CIRCULATIONAHA.120047297
- [100] Kickbusch I, Leung G. Response to the emerging novel coronavirus outbreak. *BMJ* 2020; 368: m406
- [101] Dalan R, Bornstein SR, El-Armouche A et al. The ACE-2 in COVID-19: Foe or Friend? *Horm Metab Res* 2020; doi: 10.1055/a-1155-0501
- [102] Schiffrin EL, Flack JM, Ito S et al. Hypertension and COVID-19. *Am J Hypertens* 2020; 33: 373–374
- [103] Danser AHJ, Epstein M, Batlle D. Renin-Angiotensin System Blockers and the COVID-19 Pandemic. *Hypertension* 2020; doi: 10.1161/HYPERTENSIONAHA.120.15082
- [104] Sparks MA, South A, Welling P et al. Sound Science before Quick Judgement Regarding RAS Blockade in COVID-19. *Clin J Am Soc Nephrol* 2020; doi: 10.2215/CJN.03530320
- [105] Vaduganathan M, Vardeny O, Michel T et al. Renin-Angiotensin-Aldosterone System Inhibitors in Patients with Covid-19. *N Eng J Med* 2020; 382: 1653–1659

- [106] Meng J, Xiao G, Zhang J et al. Renin-angiotensin system inhibitors improve the clinical outcomes of COVID-19 patients with hypertension. *Emerg Microb Infect* 2020; 9: 757–760
- [107] Zhang P, Zhu L, Cai J et al. Association of inpatient use of angiotensin converting enzyme inhibitors and angiotensin ii receptor blockers with mortality among patients with hypertension hospitalized with COVID-19. *Circ Res* 2020; doi: 10.1161/CIRCRESAHA.120.317134
- [108] Cardiology ESf. Position Statement of the ESC Council on Hypertension on ACE-Inhibitors and Angiotensin Receptor Blockers (Online). 2020 (updated March 13, 2020; cited 2020 March 15). Available from [https://www.escardio.org/Councils/Council-on-Hypertension-\(CHT\)/News/position-statement-of-the-esc-council-on-hypertension-on-ace-inhibitors-and-ang](https://www.escardio.org/Councils/Council-on-Hypertension-(CHT)/News/position-statement-of-the-esc-council-on-hypertension-on-ace-inhibitors-and-ang)
- [109] Canada H Hypertension Canada's Statement on: Hypertension, ACE-Inhibitors and Angiotensin Receptor Blockers and COVID-19 (Online). Online 2020 (cited 2020 March 17). Position statement]. Available from <https://hypertension.ca/wp-content/uploads/2020/03/2020-30-15-Hypertension-Canada-Statement-on-COVID-19-ACEi-ARB.pdf>
- [110] Hypertension Iso A statement from the International Society of Hypertension on COVID-19 (Online). Online 2020 (updated March 16, 2020; cited 2020 March 17). Position Statement]. Available from: A statement from the International Society of Hypertension on COVID-19
- [111] Hypertension ESo. Statement of the European Society of Hypertension (ESH) on hypertension, Renin Angiotensin System blockers and COVID-19 Online2020 (updated March 12, 2020; cited 2020 March 17). Position Statement. Available from <https://www.eshonline.org/spotlights/esh-statement-on-covid-19/>
- [112] Cardiology AHAFHSoAACo. Patients taking ACE-i and ARBs who contract COVID-19 should continue treatment, unless otherwise advised by their physician (Web). Online; 2020 (updated March 17, 2020; cited 2020 March 17). 1: (Position Statement). Available from <https://newsroom.heart.org/news/patients-taking-ace-i-and-arbs-who-contract-covid-19-should-continue-treatment-unless-otherwise-advised-by-their-physician>
- [113] Li YP. Recombinant human angiotensin-converting enzyme 2 (rhACE2) as a Treatment for patients with COVID-19 (Online). Online: clinicaltrials.gov. 2020;(updated February 27, 2020; cited 2020 March 15). Clinical trial registration. Available from <https://clinicaltrials.gov/ct2/show/NCT04287686>
- [114] Aronson JK, Ferner RE. Drugs and the renin-angiotensin system in covid-19. *BMJ* 2020; 369: m1313
- [115] Ellulu MS, Patimah I, Khaza' ai H et al. Obesity and inflammation: the linking mechanism and the complications. *Arch Med Sci* 2017; 13: 851–863
- [116] Rodriguez-Hernandez H, Simental-Mendí LE, Rodgriguez-Ramirez G et al. Obesity and Inflammation: Epidemiology, Risk Factors, and Markers of Inflammation. *Int J Endocrinol* 2013; 678159
- [117] Ryan PM, Caplice NM. Is Adipose tissue a reservoir for viral spread, immune activation and cytokine amplification in COVID-19. *Obesity*. 2020; doi: 10.1002/oby.22843
- [118] Maier HE, Lopez R, Sanchez N et al. Obesity increases the duration of influenza a virus shedding in adults. *J Infect Dis* 2018; 218: 1378–1382
- [119] Mraz M, Haluzik M. The role of adipose tissue immune cells in obesity and low-grade inflammation. *J Endocrinol* 2014; 222: R113–R127
- [120] Choi J, Joseph L, Pilote L. Obesity and C-reactive protein in various populations: a systematic review and meta-analysis. *Obes Rev* 2013; 14: 232–244
- [121] Wang L. C-reactive protein levels in the early stage of COVID-19. *Med Mal Infect*. 2020; pii: S0399-077X(20)30086-X; doi: 10.1016/j.medmal.2020.03.007
- [122] Luo X, Zhou W, Yan X et al. Prognostic value of C-reactive protein in patients with COVID-19. *MedRxiv* 2020; doi.org/10.1101/2020.03.21.20040360
- [123] Trim W, Turner JE, Thompson D. Parallels in immunometabolic adipose tissue dysfunction with ageing and obesity. *Front Immunol* 2018; 9: 169
- [124] Patel VB, Mori J, McLean BA et al. ACE2 deficiency worsens epicardial adipose tissue inflammation and cardiac dysfunction in response to diet-induced obesity. *Diabetes* 2016; 65: 85–95
- [125] Bloodworth MH, Rusznak M, Pfister CC et al. Glucagon-like peptide 1 receptor signaling attenuates respiratory syncytial virus-induced type 2 responses and immunopathology. *J Allergy Clin Immunol* 2018; 142: e12
- [126] Abdollahi M, Cushman M, Rosendaal FR. Obesity: Risk of venous thrombosis and the interaction with coagulation factor levels and oral contraceptive use. *Thromb Haemost* 2003; 89: 493–498
- [127] Stein PD, Beemath A, Olson RE. Obesity as a risk factor in venous thromboembolism. *Am J Med* 2005; 118: 978–980
- [128] Tang N, Bai H, Chen X et al. Anticoagulant treatment is associated with decreased mortality in severe coronavirus disease 2019 patients with coagulopathy. *J Thromb Haemost* 2020; 18: 1094–1099
- [129] Stefan N, Birkenfeld AL, Schulze MB et al. Obesity and impaired metabolic health in patients with COVID-19. *Nat Rev Endocrinol* 2020; doi: 10.1038/s41574-020-0364-6
- [130] Sattar N, McInnes IB, McMurray JJV. Obesity a risk factor for severe COVID-19 infection: Multiple potential mechanisms. *Circulation* 2020; doi: 10.1161/CIRCULATIONAHA.120.047659
- [131] Lighter J, Phillips M, Hochman S et al. Obesity in patients younger than 60 years is a risk factor for Covid-19 hospital admission. *Clin Infect Dis* 2020; doi: 10.1093/cid/ciaa415
- [132] Moore BJB, June CH. Cytokine release syndrome in severe COVID-19. *Science* 2020; 368: 473–474
- [133] Kang S, Tanaka T, Narazaki M et al. Targeting interleukin-6 signaling in clinic. *Immunity* 2019; 50: 1007–1023
- [134] Rockx B, Kuiken T, Herfst S et al. Comparative pathogenesis of COVID-19, MERS, and SARS in a nonhuman primate model. *Science*. 2020; doi: 10.1126/science.abb7314
- [135] Pradhan AD, Manson JE, Rifai N et al. C-Reactive protein, interleukin 6, and risk of developing type 2 diabetes mellitus. *JAMA* 2001; 286: 327–334
- [136] Pickup JC, Mattock MB, Chusney GD et al. NIDDM as a disease of the innate immune system: association of acute-phase reactants and interleukin-6 with metabolic syndrome X. *Diabetologia* 1997; 40: 1286
- [137] Hundhausen C, Roth A, Whalen E et al. Enhanced T cell responses to IL-6 in type 1 diabetes are associated with early clinical disease and increased IL-6 receptor expression. *Sci Transl Med* 2016; 8: 356ra119
- [138] Chamarthi B, Williams GH, Ricchiuti V et al. Inflammation and hypertension: the interplay of interleukin-6, dietary sodium, and the renin-angiotensin system in humans. *Am J Hypertens* 2011; 24: 1143–1148
- [139] Luther JM, Gainer JV, Murphey LJ et al. Angiotensin II induces interleukin-6 in humans through a mineralocorticoid receptor-dependent mechanism. *Hypertension* 2006; 48: 1050–1057
- [140] Smith GD, Lawlor DA, Harbord R et al. Association of C-reactive protein with blood pressure and hypertension. *Arterioscler Thromb Vasc Biol* 2005; 25: 1051–1056
- [141] Isidori AM, Pofi R, Hasenmajer V et al. Use of glucocorticoids in patients with adrenal insufficiency and COVID-19 infection. *Lancet Diabetes Endocrinol* 2020; doi: 10.1016/S2213-8587(20)30149-2
- [142] Endocrinology Sf. (webpage). Online2020 (updated March 11, 2020; cited 2020 March 15). Advice Statement. Available from <https://www.endocrinology.org/news/item/14050/Coronavirus-advice-statement-for-patients-with-adrenal%2Fpituitary-insufficiency>

- [143] Kaiser UB, Mirmira RG, Stewart PM. Our Response to COVID-19 as Endocrinologists and Diabetologists. *J Clin Endocrinol Metab* 2020; 105 pii: dgaa148 doi: 10.1210/clinem/dgaa148
- [144] Irina B, Jon H, Vasileios C et al. Primary adrenal insufficiency is associated with impaired natural killer cell function: A potential link to increased mortality. *Eur J Endocrinol* 2017; 176: 471–480
- [145] Wiebke A, Stephanie EB, Simon HSP et al. Endocrinology in the time of COVID-19: Management of adrenal insufficiency. *Eur J Endocrinol* 2020; doi.org/10.1530/EJE-20-0361
- [146] John N-P, Lynnette N, Martin R et al. Endocrinology in the time of COVID-19: Management of Cushing's syndrome. *Eur J Endocrinol* 2020; doi.org/10.1530/EJE-20-0352
- [147] Narayan SS, Lorenz K, Ukkat J et al. Angiotensin converting enzymes ACE and ACE2 in thyroid cancer progression. *Neoplasma* 2019; 67: 402–409
- [148] Diniz GP, Senger N, Carneiro-Ramos MS et al. Cardiac ACE2/angiotensin 1-7/Mas receptor axis is activated in thyroid hormone-induced cardiac hypertrophy. *Ther Adv Cardiovasc Dis* 2016; 10: 192–202
- [149] Yao XH, Li TY, He ZC et al. A pathological report of three COVID-19 cases by minimally invasive autopsies. *Zhonghua Bing Li Xue Za Zhi* 2020; 49: E009
- [150] Zhang J-j, Dong X, Cao Y-y et al. Clinical characteristics of 140 patients infected with SARS-CoV-2 in Wuhan, China. *Allergy* 2020; doi: 10.1111/all.14238
- [151] Channappanavar R, Fett C, Mack M et al. Sex-based differences in susceptibility to severe acute respiratory syndrome coronavirus infection. *J Immunol* 2017; 198: 4046–4053
- [152] Christ-Crain M, Hoorn EJ, Sherlock M et al. Endocrinology in the time of COVID-19: Management of diabetes insipidus and hyponatraemia. *Eur J Endocrinol* 2020; EJE-20-0338: Accepted for publication: 24 Apr 2020
- [153] Liamis G, Milionis HJ, Elisaf M. Hyponatremia in patients with infectious diseases. *J Infect* 2011; 63: 327–335
- [154] Foundation NO Patients and Providers Fact Sheet: Injections or Infusions of Osteoporosis Medications During the COVID-19 Pandemic cdn.nof.org/2020 (updated April 23, 2020; cited 2020 April 30). Available from https://cdn.nof.org/wp-content/uploads/NOF-COVID-Factsheet_.pdf
- [155] Dyer O. Covid-19: Black people and other minorities are hardest hit in US. *BMJ* 2020; 369: m1483
- [156] Yancy CW. COVID-19 and African Americans. *JAMA*. 2020; doi: 10.1001/ama.2020.6548
- [157] Health LDoP Coronavirus [COVID-19]. Online: ldh.la.gov. 2020;
- [158] Health Ndo Age adjusted rate of fatal lab confirmed COVID-19 cases per 100,000 by race/ethnicity group. online www.nyc.gov 2020;
- [159] Zhao Y, Zhao Z, Wang Y et al. Single-cell RNA expression profiling of ACE2, the putative receptor of Wuhan 2019-nCoV. *BioRxiv*. 2020; doi.org/10.1101/2020.01.26.919985
- [160] Cao Y, Li L, Feng Z et al. Comparative genetic analysis of the novel coronavirus (2019-nCoV/SARS-CoV-2) receptor ACE2 in different populations. *Cell Discov* 2020; 6: 11
- [161] Asselta R, Paraboschi EM, Mantovani A et al. ACE2 and TMPRSS2 variants and expression as candidates to sex and country differences in COVID-19 severity in Italy. *MedRxiv* 2020; doi.org/10.1101/2020.03.30.20047878
- [162] USTS. Report of the US Transgender Survey 2016 2015 [cited 2020 April 21]. Available from <https://transequality.org/sites/default/files/docs/usts/USTS-Executive-Summary-Dec17.pdf>
- [163] Network NLC Transgender/Gender-Nonconforming People and Cancer 2020 [cited 2020 April 21]. Available from <https://cancer-network.org/cancer-information/transgendergender-nonconforming-people-and-cancer/>
- [164] Equality NCft. The Coronavirus [COVID-19] Guide 2020 [cited 2020 April 21]. Available from <https://transequality.org/covid19>
- [165] Shekhar S, Hannah-Shmouni F. Hookah smoking and COVID-19: Call for Action. *CMAJ* 2020; 192: E462
- [166] Bauchner H, Golub RM, Zylke J. Editorial concern – Possible reporting of the same patients with COVID-19 in different reports. *JAMA*. 2020; doi: 10.1001/jama.2020.3980