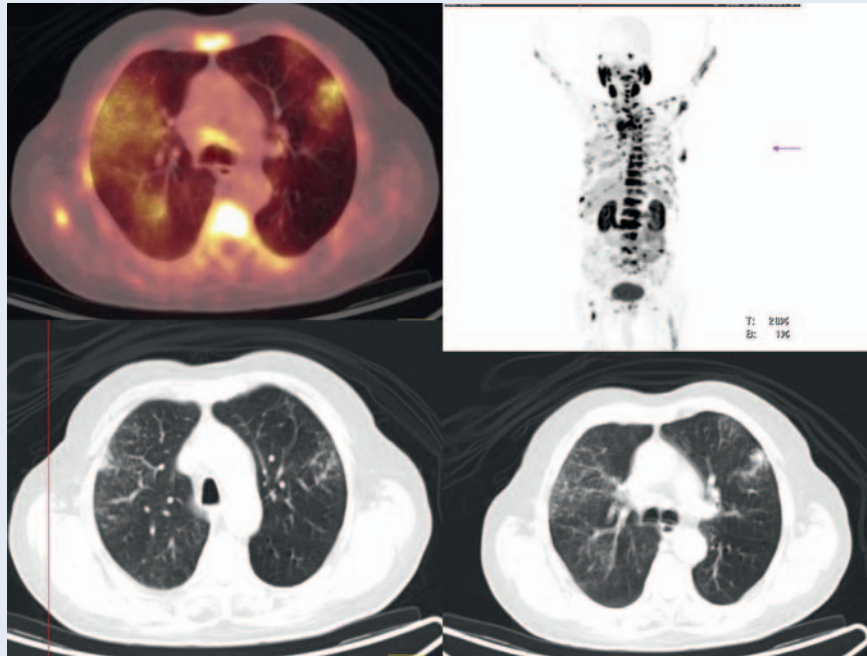


**ERRATUM 05.02.2021**

**Correction: Habibollah Dadgar, Nasim Norouzbeigi, Ali Gholamrezanezhad, Majid Assadi. Incidental Detections Suggestive of COVID-19 in Asymptomatic Patients Undergoing 68Ga-DOTATATE and 68Ga-PSMA-11 PET-CT Scan for Oncological Indications. Nuklearmedizin 2020; DOI 10.1055/a-1311-2856**

In the above article, an incorrect figure 2 was depicted. The mistake has been fixed in the meantime. The corrected figure presents below.



► **Fig. 2** 68Ga-PSMA-11 scan performed for an 81-year-old man suspected to have pulmonary metastases of prostate cancer. The 68Ga-PSMA-11 PET/CT scan revealed bilateral ground-glass opacities and consolidations with mildly increased PSMA uptake, concerning for COVID-19.