

Erratum

Park S-Y, Bell GI. Noninvasive Monitoring of Changes in Pancreatic Beta-cell Mass by Bioluminescent Imaging in MIP-luc Transgenic Mice. *Horm Metab Res* 2009; 41: 1–4

The colouring of the mouse model in figure 1 is supposed to be in white not in yellow as correctly shown below:

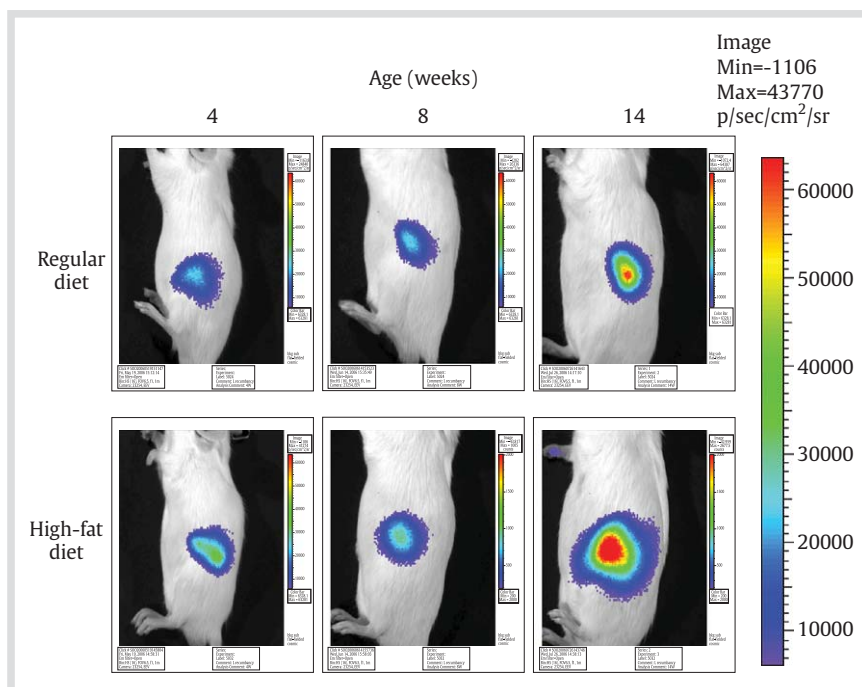


Fig. 1 Bioluminescent imaging of pancreatic islets in male MIP-luc mice fed a regular or high-fat diet for 4 or 10 weeks beginning at 4 weeks of age. The images show the same animal imaged at the start of the study (4 weeks of age) and at 8 and 14 weeks of age. The signal intensity is expressed as photons (p) per second per cm² per steradian (sr, a unit of solid angle). There is interindividual variation in the bioluminescent signal even among littermates of the same age. Mice were randomly assigned to the regular or high-fat diet.