

Mesenteric phlebosclerosis



Fig. 1 Endoscopic view showing the dark-purple mucosal surface.

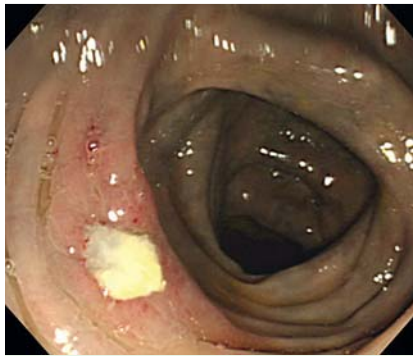


Fig. 2 Endoscopic view showing the multiple mucosal ulcerations.

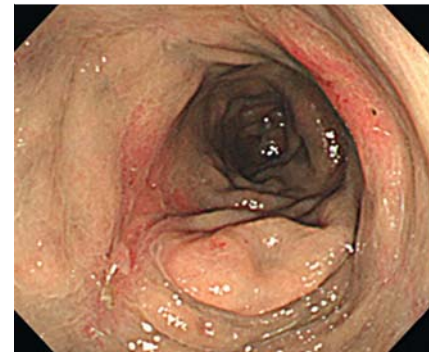


Fig. 3 Endoscopic view showing ulcers and scarring.

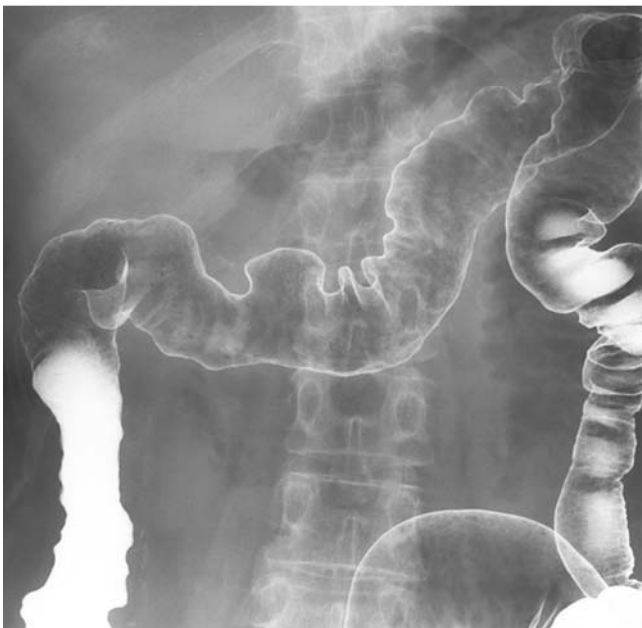


Fig. 4 Barium enema showing wall thickening, disappearance of the haustra, and an extension defect of the ascending and transverse colon.

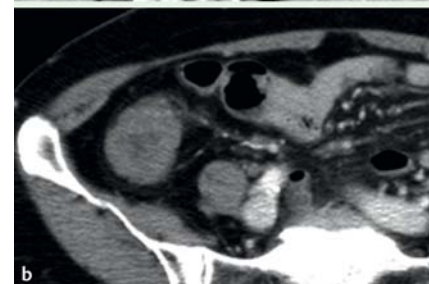
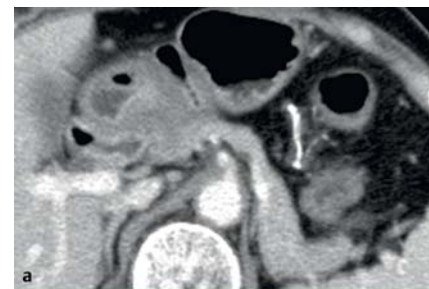


Fig. 5 a,b Computed tomography (CT) scans showing patchy and linear calcifications in and around the colonic wall.

Phlebosclerosis is a rare cause of chronic mesenteric ischemia, and is characterized by thickening of the colonic wall with calcification of the affected veins. Phlebosclerosis as a disease entity has been recently proposed by Iwashita et al [1]. Fewer than 100 cases have been reported to date, and most are from Japan. We present a case of chronic ischemic colonic lesions caused by phlebosclerosis.

A 58-year-old woman was admitted to our hospital for colonoscopy. At the first colonoscopy, the mucosal surface from the ileocecal junction to the transverse colon was seen to be dark purple in color (Fig. 1). Since then, the patient has been under regular colonoscopic follow-up (about one or two times a year). At 6 years

after the first presentation, we noted multiple mucosal ulcerations extending from the ascending to the transverse colon (Fig. 2), and at 8 years after the first presentation, the colonoscopic findings included scars and ulcers (Fig. 3). Barium enema showed wall thickening, disappearance of the haustra, and an extension defect in the ascending and transverse colon (Fig. 4). Abdominal computed tomography showed patchy and linear calcifications in and around the colonic wall (Fig. 5). The histopathologic findings were compatible with ischemic colitis. The pathogenesis of phlebosclerosis remains unclear. More case reports and further research are needed to clarify the etiology of phlebosclerosis.

Competing interests: None

Endoscopy_UCTN_Code_CCL_1AD_2AF

A. Oshima, S. Ito, Y. Abe, T. Uchiyama, H. Iida, H. Endo, K. Hosono, Y. Sakamoto, K. Fujita, M. Yoneda, H. Takahashi, T. Koide, C. Tokoro, A. Goto, M. Inamori, N. Kobayashi, K. Kubota, S. Saito, A. Nakajima

Gastroenterology Division, Yokohama City University School of Medicine, Yokohama, Japan

References

- 1 Iwashita A, Yao T, Schlemper RJ et al. Mesenteric phlebosclerosis: a new disease entity causing ischemic colitis. *Dis Colon Rectum* 2003; 46: 209–220

Bibliography

DOI 10.1055/s-0029-1244147
Endoscopy 2010; 42: E156–E157
© Georg Thieme Verlag KG Stuttgart · New York ·
ISSN 0013-726X

Corresponding author

M. Inamori, MD, PhD
Gastroenterology Division
Yokohama City University School of Medicine
3-9 Fukuura
Kanazawa-ku
Yokohama 236-0004
Japan
Fax: +81-45-7843546
inamorim@med.yokohama-cu.ac.jp