

Comparing Augmentation with Non-Antidepressants over Sticking to Antidepressants after Treatment Failure in Depression: A Naturalistic Study

Authors

S. Köhler^{1,*}, T. Unger^{2,*}, S. Hoffmann^{2,*}, B. Steinacher^{3,*}, T. Fydrich^{4,*}, T. Bschor^{5,*}

Affiliations

Affiliation addresses are listed at the end of the article

Key words

- depression
- depression treatment
- antidepressants

received 24.12.2011
revised 16.07.2012
accepted 24.07.2012

Bibliography

DOI <http://dx.doi.org/10.1055/s-0032-1323677>
Published online ahead of print: October 23, 2012
Pharmacopsychiatry 2013; 46: 69–76
© Georg Thieme Verlag KG Stuttgart · New York
ISSN 0176-3679

Correspondence

S. Köhler, MD
Department of Psychiatry and Psychotherapy
Charité University Medicine Berlin
Campus Mitte
Charitéplatz 1
10117 Berlin
Germany
Tel.: +49/30/450 617195
Fax: +49/30/450 517944
stephan.koehler@charite.de

Abstract

Introduction: Non-response to an antidepressant monotherapy in unipolar depression is quite common. Therefore strategies for subsequent treatment steps are necessary. However, there is a lack of direct comparisons of these different strategies. In this naturalistic study we compared the outcome to different strategies after failure of the primary antidepressant treatment.

Methods: Failure of primary antidepressant monotherapy occurred in 135 patients. 98 of these patients have been administered 4 treatment strategies of the physicians' choice: lithium augmentation (Li-Augm), switching to another antidepressant (AD-Switch), combination of 2 antidepressants (AD-Comb) or augmentation with second generation antipsychotic (SGA-Augm). Primary outcome measure was the 17-item Hamilton rating scale for depression (HRSD).

Results: Patients who received Li-Augm or augmentation with SGAs showed significantly greater improvement in HRSD and BDI compared to patients with antidepressant switch or antidepressant combination. Remission rates for Li-Augm and SGA-Augm were 89.3% and 86.2% compared to 40.7% for AD-Switch and 42.9% for AD-Comb.

Discussion: Changing to another pharmacological class (Li-Augm or augmentation with SGAs) showed better treatment results than sticking to the class of antidepressants (AD-Switch and AD-Comb) after primary failure in response to antidepressant monotherapy in unipolar depression. The lack of randomization and absence of a non-response definition are design flaws. Controlled studies are required to confirm the findings of this trial.

Introduction

A main result of the Sequenced Treatment Alternatives to Relieve Depression (STAR * D) trial [1] was that outpatients who initially received monotherapy with citalopram only showed remission in 28% of the cases. Nevertheless, remission should be the aim of treatment [2]. Consequently failure to primary antidepressant treatment is quite common. However, strategies for second treatment steps, especially in comparison to each other, have rarely been investigated [3].

There are 4 frequently used pharmacological strategies for treatment of depression after initial antidepressant monotherapy showed no response: Lithium augmentation, switch of antidepressants, combination of antidepressants and

augmentation with second generation antipsychotics (SGA). Evidence for the effectiveness of these strategies varies and there are hardly any data analyzing superiority of one treatment step over the other [4]. Especially empirically evidence for antidepressant switch or antidepressant combination is poor [5–8]. In contrast, there are more studies showing a better level of evidence for augmentation strategies with lithium or SGA: Efficacy of lithium-augmentation was shown in a meta-analysis of 10 studies [9]. Odds ratio (OR) for probability of response to lithium was 3.11 compared to placebo and a number needed to treat (NNT) of 5. Also SGA was found to be a reasonable augmentation strategy for non-response to antidepressant (AD) monotherapy. In a meta-analysis including 16 studies with 3480 patients, Nelson and Papakostas (2009) found that augmentation with 4 SGA (aripiprazole, olanzapine, risperidone, quetiapine) was supe-

* All authors contributed to and have approved the final manuscript.

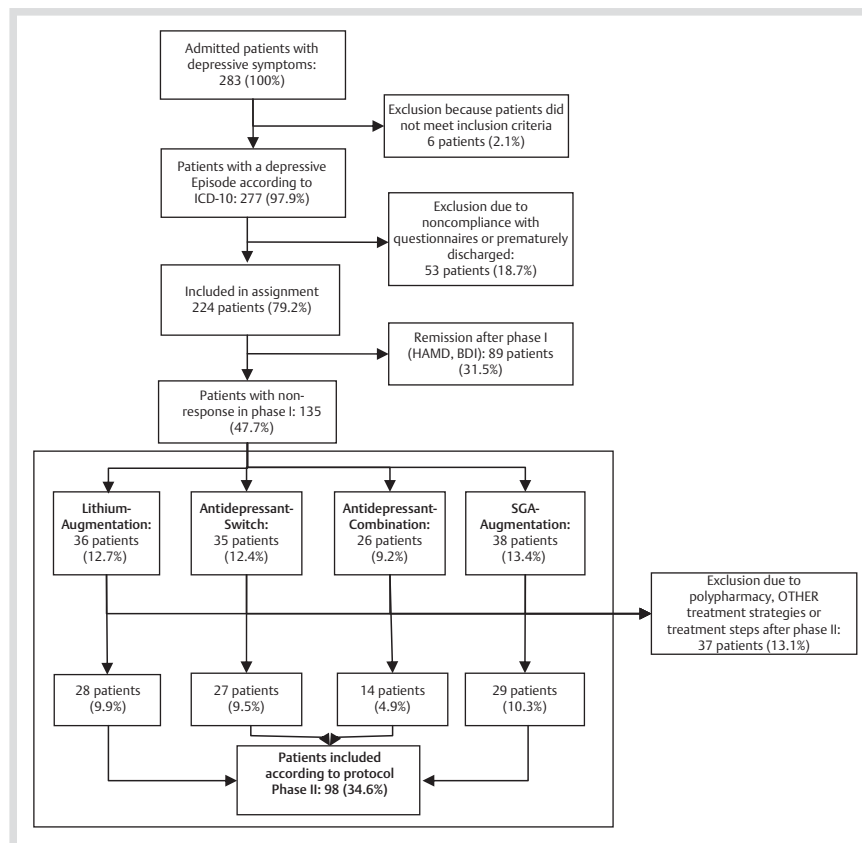


Fig. 1 Study protocol and reasons for exclusion.

rior to augmentation with placebo [10]. The OR for response to SGA vs. placebo was 1.69 and an NNT of 9 patients was calculated.

In conclusion, the evidence for differences regarding the efficacy of different pharmacological treatment strategies after failure to AD monotherapy varies and there are hardly any competitive investigations of these strategies [11]. Therefore further insight not only from RCTs but also from naturalistic trials of everyday clinical routine are warranted [12]. Particularly results gained from trials in clinical practice are required because the patient population of randomized controlled trials (RCTs) is often found to be biased [13, 14]. However RCTs are the basis of advancing knowledge. Due to the lack of RCTs on this issue, the aim of this study was to find differences in treatment response after failure of primary antidepressant monotherapy in a naturalistic design (lithium-augmentation, antidepressant-combination, switch of antidepressants, augmentation with SGA).

Methods

The study was naturalistic in design and treatment was implemented according to the special needs of each patient. Treatment was not influenced due to the design of the study and analyses have been performed post-hoc. Over a period of 2 years all patients with a unipolar depression were included in the trial. The entry criteria included: (i) ICD-10 criteria for a major depressive episode or recurrent depression as the principal current diagnosis, (ii) aged 18 or older, (iii) informed consent from the patient, (iv) inpatient treatment duration ≥ 21 days [15]. After admission, the diagnosis of a depressive episode was done by the attending physicians within 3 days according to ICD-10 using the International Diagnostic Checklist [16]. Participants

were excluded (i) if they had current severe alcohol or drug dependence (participants with mild to moderate alcohol or drug dependence were included), (ii) if they had a previous history of schizophrenia, schizoaffective disorder, bipolar I disorder (a history of hypomania was permitted), (iii) if the depressive episode was attributable to organic illness and (iv) if they had such severe concentration deficits to complete the questionnaires at admission (e.g., had language difficulties or did not complete the questionnaires at discharge (◉ Fig. 1)). The study has been conducted in accordance with the current version of the Declaration of Helsinki and was approved by the local Ethics Committee. Patients were treated under consideration of the German S3 guideline for treatment of depression [17]. All psychiatric drugs, the medication class, the dosage and the treatment duration were recorded systematically. In addition, the duration and type of other treatments like psychotherapy, occupational therapy, physical therapy or art therapy were recorded.

Assignment

Only patients with an initial antidepressant monotherapy with a duration of 21–35 days (phase I) were analyzed followed by an evaluation of the response to treatment by the attending clinicians. In 135 cases, patients showed an indication for change of treatment according to the clinical judgement (no defined measurement). 98 patients met criteria for assignment to one of the 4 treatment groups (phase II): 1) Lithium-augmentation (Li-Augm), 2) switch of antidepressants (AD-Switch), 3) combination of antidepressants (AD-Comb), 4) augmentation with SGA (SGA-Augm). Criteria for enrolment into analysis were: patients had to have an adequate antidepressant monotherapeutic treatment in phase I according to duration (21–35 days) and dosage (◉ Table 1, recommendations for doses of antidepressants, doses used in this study). Only experienced clinicians assigned the

Table 1 Antidepressants and dose recommendation.

	Dose recommendation according to guideline in mg	Doses used in this study in mg
venlafaxine	75–225	150–300
duloxetine	60	60–120
mirtazapine	15–45	30–45
paroxetine	20–40	20–40
escitalopram	10–20	10–20
fluoxetine	20–40	40–60
clomipramin	100–250	150–225
amitriptyline	100–300	150–250
doxepin	100–300	100–200
sertraline	50–100	100–150

patients to the appropriate treatment group according to the patients' medical/psychiatric needs. Change of medication was not caused by side effects of the phase I treatment. There were no other psychotropic drugs in phases I and II other than the medication of the treatment groups. Treatment in phase II was adequate in doses and duration. Patients who received a third treatment step due to failure in phase II were not included in the analysis. To assess the severity of depressive symptoms, clinician-rated and self-rating instruments were used at admission and at discharge (t1 and t2). Treatment groups were as heterogeneous as they normally appear in clinical practice.

Diagnostic methods

The severity of depressive symptoms was measured using clinician-rated and self-rated assessment procedure. The Hamilton rating scale for depression (HRSD₁₇) was used to assess the severity of depressive symptoms [15] and was the primary outcome criterion. It was performed by trained psychologists who were blinded regarding the treatment arm. Secondary measures included the Beck depression inventory [18] and the Brief symptom inventory (BSI) to assess the patients' depressive and general psychological symptoms as means of self-assessment [19]. The attending physicians rated the patient's global level of functioning using the Global assessment of functioning scale (GAF) [20] as well as the global severity of the psychiatric disorder using the Clinical global impression scale (CGI) [21]. The assessment of personality disorders was performed using the structured clinical interview for DSM-IV personality disorders (SKID II) and was conducted by trained and experienced clinical psychologists 3 weeks after admission [22]. All raters were given training and supervision to perform clinician-rated assessment procedures (HRSD, CGI, GAF, SKID II).

Statistics

To analyze if patients in the 4 treatment groups were comparable, analysis of variance followed by post-hoc tests (parametric data) or Kruskal-Wallis test followed by Mann-Whitney U-test (non-parametric data) for important psychometric characteristics were performed. Significant differences were added as covariates in the following analyses. The primary analysis for examining changes over time was a 2 × 2 ANCOVA with the 2 factors "treatment" and "time", controlling for pre-treatment scores (repeated-measure ANCOVA). Afterwards, post-hoc analyses for differences between treatment groups were performed. All significance tests were performed at a 2-tailed alpha level of 0.05, incorporating an LSD procedure for multiple comparisons.

For all tests, effect sizes (ES) for independent random samples were calculated using Cohen's d statistic and the effect sizes for repeated measures [23]. At the end of treatment, the remission rates under the 4 treatment conditions were compared using 2-sided Pearson's χ^2 tests (remission: HRSD < 8) [24]. The statistical analyses were carried out using SPSS 17.

Results

A total of 283 patients were screened. 277 patients met the inclusion criteria and 224 patients were enrolled in the study. 135 patients (47.7%) showed no response after initial antidepressant monotherapy and were therefore assigned to one of the 4 treatment groups. Another 37 patients (13.1%) were excluded due to polypharmacy, different treatment strategies or treatment steps after phase II. Therefore 98 patients (34.6%) were included in the study protocol. **Fig. 1** shows the study chart including reasons for drop out. **Table 2** displays baseline demographic and illness characteristics for the entire sample. A severe depressive episode was the principal diagnosis in 43.7% of patients and a recurring severe depressive episode was diagnosed in 27.6% of all cases using ICD-10. There were no significant treatment group differences in baseline demographic or illness characteristics and comorbidities. The average HRSD score on admission was 28.2 (SD = 11.1) characterising a patient group with rather severe depressive symptoms. Antidepressant medication in phase I was similar in the treatment groups (**Table 2**). Change of treatment was performed after an average of 27.3 days (SD: 5.7) without differences between the treatment groups (F = 1.27; p = 0.28). Characteristics of treatment in phase II including medication classes are displayed in **Table 3** and were also checked for duration and dosage. Again there was no difference between the treatment groups in terms of duration in phase II (F = 1.02, p = 0.47). Additionally, patients took part in occupational therapy (92%, n = 206), additional cognitive-behavioural therapy (55.8%, n = 125), cognitive-behavioural group therapy for anxiety disorders (17%, n = 38), music therapy (25.4%, n = 57), progressive muscle relaxation training (17%, n = 38), addiction therapy (8%, n = 18), physical and sports therapy (81.7%, n = 183) and dance- and motion therapy (40.2%, n = 90).

Treatment effects

Analysis of variance for repeated measures revealed a significant improvement and large effect sizes for all patients from baseline to discharge in all inventories (HRSD: F = 648, p < 0.001; BDI: F = 194.7, p < 0.001; BSI-GSI, F = 167.59, p < 0.0). According to [23] effect sizes d for repeated measurements indicate a substantial reduction (d > 0.80) of depressive symptoms (ES_{HRSD} d = 3.2, ES_{BDI} = 1.9) and general psychological distress (ES_{BSI-GSI} = 1.6) during treatment. The interaction effect "time by treatment condition" indicated a significant difference in the amount of reduction of the depression severity measured using the HRSD between the 4 treatment groups (HRSD: F = 2.84, p = 0.04; BDI: F = 3.68, p = 0.01; **Table 4**). The subsequent post-hoc analyses (**Table 5**) revealed a significantly higher improvement for Li-Augm over AD-Switch (mean difference [MD]: 2.72, p = 0.02) and for Li-Augm over AD-Comb (MD = 3.45, p = 0.02) in the HRSD. Likewise SGA-Augm showed a significant higher improvement compared to AD-Switch (MD = 2.34, p = 0.04) and AD-Comb (MD = 3.07, p = 0.03). The BDI score showed similar results: Patients in the Li-Augm rated a higher improvement of their

Table 2 Baseline demographic and sample characteristics of the patients.

		Li-Augm	AD-Switch	AD-Comb	SGA-Augm	F/ χ^2	p
number of patients		28	27	14	29		
age in y (SD)		50.76 (13.73)	57.97 (11.06)	50.47 (12.41)	50.89(11.95)	F=3.0	0.75
range		26–64	26–65	30–68	33–76		
female n (%)		17 (60.71)	16 (59.26)	9 (64.3)	18 (62.07)	$\chi^2=0.06$	0.997
education n (%):	apprenticeship	13 (46.4)	11 (40.7)	9 (64.3)	14 (48.3)		
	graduate degree	15 (53.5)	16 (59.2)	4 (28.5)	14 (48.2)	$\chi^2=0.59$	0.89
	other	1 (3.6)	0	1 (7.1)	1 (3.6)		
working situation n (%)	working	12 (42.8)	8 (29.6)	4 (28.5)	9 (31.3)	$\chi^2=1.42$	0.7
	unemployed	6 (21.4)	1 (3.7)	5 (35.7)	9 (31.3)		
	other	10 (36.4)	18 (66.7)	5 (35.7)	11 (37.9)		
family status, n (%)	single	3 (10.7)	2 (7.4)	5 (35.7)	9 (31.0)		
	married	15 (53.5)	15 (55.6)	1 (7.1)	13 (44.8)	$\chi^2=10.0$	0.02
	separated	5 (17.9)	3 (28.6)	4 (28.5)	1(3.6)		
	divorced	4 (14.3)	5 (18.5)	3 (21.4)	5 (18.5)		
	widowed	1 (3.6)	2 (7.4)	1 (7.1)	1 (3.6)		
comorbidity axis I, n (%)		10 (36.4)	5 (18.5)	6 (42.8)	12 (41.9)	$\chi^2=8.15$	0.06
comorbidity axis II		11 (39.3)	9 (28.0)	4 (28.6)	11 (37.9)	$\chi^2=6.57$	0.08
duration of treatment, in d (SD)		56.89 (16.85)	50.74 (17.12)	54.36 (14.88)	57.55 (17.37)	F=3.0	0.09
duration of treatment in phase I in d (SD)		26.11 (2.07)	28.89 (3.09)	27.93 (2.52)	26.11 (3.07)	F=1.27	0.28
treatment of phase I	SSRI	4 (14.3)	9 (28.0)	8 (27.6)	8 (27.6)	$\chi^2=0.56$	0.91
	SSNRI	5 (17.9)	11 (40.7)	9 (64.3)	11 (27.6)	$\chi^2=0.04$	1.0
	TCA	3 (10.7)	5 (18.5)	4 (28.5)	6 (33.3)	$\chi^2=0.45$	0.36
	mirtazapine	2 (7.4)	4 (14.8)	6 (40.0)	3 (15.3)	$\chi^2=0.12$	0.99
diagnosis	moderate depressive episode (F 32.1)	0 (0)	3 (28.6)	1 (7.1)	3 (15.3)		
	severe depressive episode (F 32.2)	16 (57.1)	15 (55.6)	7 (49.9)	13 (44.8)		
	recurrent depressive disorder, current episode moderate (F 33.1)	0 (0)	0 (0)	0 (0)	0 (0)		
	recurrent depressive disorder, current episode severe (F 33.2)	12 (42.9)	9 (28.0)	6 (42.8)	10 (35.0)		

Li-Augm, lithium augmentation; AD-Switch, antidepressant switch; AD-Comb, antidepressant combination, SGA-Augm, augmentation with second generation antipsychotics; SSRI, selective serotonin reuptake inhibitors; TCA, tricyclic antidepressants; SNRI, serotonin-norepinephrine reuptake inhibitors; AD, antidepressants; SD, standard deviation; n, numbers; χ^2 chi square

depressive symptoms compared to AD-Switch (MD=3.32, $p=0.04$) and AD-Comb. (MD=6.32, $p<0.01$). Patients augmented with SGA also showed a greater reduction in the BDI than patients with AD-Comb (MD=4.03, $p=0.04$), but not compared to AD-Switch (MD=1.03, $p=0.56$). There were no significant differences between Li-Augm and SGA-Augm in the HRSD or the BDI. Regarding the amount of reduction in general psychological symptoms (BSI-GSI) significant differences between the treatment groups could be found (BSI-GSI, $F=2.87$; $p=0.04$). Patients with Li-Augm and SGA-Augm had higher amount of reduction than patients with AD-Comb (Li-Augm: MD=0.44, $p<0.01$, SGA-Augm: MD=0.31, $p=0.03$).

Remission rates

Comparing the remission rates between the 4 treatment conditions, patients with Li-Augm showed higher remission rates (89.3%) in the HRSD with a statistical trend ($p<0.1$) compared to AD-Switch (40.7%; $\chi^2=3.07$; $p=0.08$) but not to AD-Comb (AD-Comb: 42.9%; $\chi^2=1.75$, $p=0.19$). The SGA-Augm-group also had higher remission rates (86.2%) compared to AD-Switch ($\chi^2=2.82$,

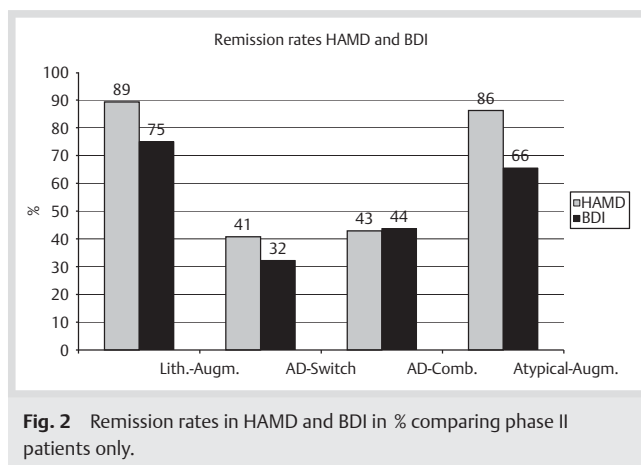


Fig. 2 Remission rates in HAMD and BDI in % comparing phase II patients only.

$p=0.09$) but not to AD-Comb ($\chi^2=1.59$, $p=0.21$). All remission rates are displayed in **Fig. 2**.

Global functioning and clinical global impression

Overall functioning improved considerably from baseline to discharge (GAF: $F=250.1$, $p<0.001$, $ES_{pre-post}$: $d=2.3$) for all patients. Also there was a significant reduction in general severity of disorder from intake to discharge (CGI: $F=524.2$, $p<0.001$, $ES_{pre-post}$: $d=3.4$). The interaction effect “time by treatment con-

dition” indicated significant differences between treatment conditions regarding the amount of reduction from baseline to discharge (GAF: $F=5.21$, $p=0.002$; CGI: $F=4.28$, $p=0.007$; **Table 3**). Post-hoc analyses (**Table 4**) again revealed a higher gain of functioning (GAF) for the Li-Augm compared to AD-Comb (MD=0.78, $p<0.01$). Patients in the SGA-Augm group also had a higher improvement compared to AD-Switch and AD-Comb (AD-Comb: MD=0.90, $p<0.01$ [trend]; AD-Switch: MD=0.37, $p=0.08$). Improvement in GAF did not differ between Li-Augm and SGA-Augm. Both groups

Table 3 Treatment in phase II.

	Li-Augm	AD-Switch	AD-Comb	Atypical-Augm.	
number of patients	27	27	14	28	
specific characteristics of strategy:	average lithium level: 0.82 mmol/L	switch-strategy:	n	combination strategy: n	
		SSRI→SSNRI:	5 (18.5%)	SSRI-SSNRI	3 (21.4%)
		SSRI→mirtazapine	2 (7.4%)	SSRI-mirtazapine	1 (7.1%)
		SSNRI→mirtazapine	4 (14.8%)	SSRI-TCA	1 (7.1%)
		SSNRI→TCA	4 (14.8%)	SSNRI-mirtazapine	3 (21.4%)
		SSNR→SSRI	2 (7.4%)	SSNRI-SSRI	2 (14.2%)
		TCA→SSNRI	1 (3.7%)	TCA-SSNRI	2 (14.2%)
		TCA→SSRI	5 (18.5%)	mirtazapine-SSRI	2 (14.2%)
		mirtazapine→SSNRI	3 (11.1%)		
		mirtazapine→TCA	1 (3.7%)		

Li-Augm, lithium augmentation; AD-Switch, antidepressant switch; AD-Comb, antidepressant combination, SGA-Augm, augmentation with second generation antipsychotics; SSRI, selective serotonin reuptake inhibitors; TCA, tricyclic antidepressants; SSNRI, serotonin-norepinephrine reuptake inhibitors; AD, antidepressants; SD, standard deviation; n, numbers

Table 4 Baseline and post-treatment scores.

		Total	Li-Augm	AD-Switch	AD-Comb	SGA-Augm	Interaction factors “treatment vs. time”		
							F (adj.Greenh.-Geisser)	df	p
HAMD	baseline mean (SD)	28.22 (6.83)	27.68 (8.33)	29.04 (6.62)	29.5 (6.47)	27.38 (5.67)	2.84	1	0.04
	post-treatment mean (SD)	7.52 (4.61)	5.36 (3.86)	9.44 (4.48)	10.43 (5.54)	6.41 (3.56)			
BDI	baseline mean (SD)	28.58 (11.05)	27.25 (11.08)	26.78 (9.02)	31.29 (9.96)	30.24 (13.11)	3.68	1	0.01
	post-treatment mean (SD)	11.77 (6.31)	8.11 (5.18)	15.22 (4.91)	16.71 (6.41)	9.69 (5.4)			
BSI-GSI	baseline mean (SD)	1.44 (0.63)	1.33 (0.52)	1.34 (0.45)	1.8 (0.5)	1.48 (0.85)	2.87	1	0.04
	post-treatment mean (SD)	0.64 (0.41)	0.49 (0.34)	0.71 (0.4)	0.91 (0.52)	0.6 (0.38)			
CGI	baseline mean (SD)	5.51 (0.58)	5.41 (0.57)	5.56 (0.64)	5.64 (0.5)	5.48 (0.57)	4.28	1	<0.01
	post-treatment mean (SD)	3.06 (0.89)	2.89 (0.75)	3.32 (0.9)	3.85 (0.8)	2.66 (0.77)			
GAF	baseline mean (SD)	47.6 (10.1)	46.2 (13.6)	50 (8.8)	43.3 (6.5)	48.3 (8.5)	5.21	1	<0.01
	post-treatment mean (SD)	69.6 (10.2)	73.3 (9.2)	64.8 (9.2)	62.3 (10.1)	73.4 (8.6)			

Li-Augm, lithium augmentation; AD-Switch, antidepressant switch; AD-Comb, antidepressant combination, SGA-Augm, augmentation with second generation antipsychotics; HAMD, Hamilton Depression; BDI, Beck Depression Inventory; BSI-GSI, Brief Symptom Inventory-Global Severity Index; CGI, Clinical Global Impression Scale, GAF, Global Assessment of Functioning; F values referring to the interaction of the factors “treatment” and “time” in the 2×2 ANCOVA, adjusted via Greenhouse-Geisser, df, degrees of freedom

Post-Hoc-Tests	HAMD; p	BDI, p	BSI-GSI, p	CGI, p	GAF, p
Li-Augm vs. AD-Switch	0.02*	0.04*	0.32	0.25	0.25
Li-Augm vs. AD-Comb	0.02*	0.03*	<0.01*	<0.01*	<0.01*
Li-Augm vs. SGA-Augm	0.74	0.20	0.25	0.57	0.54
AD-Switch vs. AD-Comb	0.61	0.18	0.32	0.02*	0.05*
SGA-Augm vs. AD-Switch	0.04*	0.56	0.89	0.08	0.08
SGA-Augm vs. AD-Comb	0.03*	0.04*	0.03*	<0.01*	<0.01*

ANCOVA, analysis of covariance; Li-Augm, lithium-augmentation; AD-Switch, antidepressant-switch; AD-Comb, antidepressant-combination, SGA-Augm, augmentation with second generation antipsychotics; HAMD, Hamilton depression; BDI, Beck depression inventory; BSI-GSI, brief symptom inventory-global severity index; CGI, clinical global impression scale, GAF, global assessment of functioning, *, significance on the 0.05 level

Table 5 Post-hoc-tests for 2×2 ANCOVA.

Li-Augm and SGA-Augm had significantly higher improvement in the CGI compared to AD-Comb (Li-Augm: MD=0.58, $p<0.01$; SGA-Augm: MD=0.66, $p<0.01$) and to AD-Switch (Li-Augm: MD=0.29, $p=0.05$; SGA-Augm: MD=0.37, $p=0.01$).

Safety measurements and compliance

Adverse events reported by the patients were recorded. Somatic complaints were assessed and recorded.

There was no relevant difference between the groups in the percentage of patients in the safety set who reported at least one emergent adverse event on treatment (51%). There were no deaths during the study and no suicide attempts. The most frequently affected systemic organ classes were gastrointestinal disorders (18.4%) and nervous system disorders (20.5%). The most frequent emergent adverse events were headache, nausea, and somnolence.

Discussion

The present study investigated differences in treatment outcome between 4 different pharmacological treatment strategies after failure of the primary antidepressant monotherapy. In this naturalistic design, 60% of the depressive patients failed to show remission after primary treatment. This number is lower compared to the STAR*D trial, where 72% of patients failed to reach remission after citalopram monotherapy in treatment step one (1). Contrary to the STAR*D study, which only included outpatients, the present study only included inpatients. Nevertheless, overall results are comparable to those of other "effectiveness" studies investigating the quality of inpatient treatment of depression. In a multicenter trial of the German Research Network on Depression investigating suicidality in 1014 patients, response rates of 68.9% and remission rates of 51.9% in the HRSD could be achieved [25].

The second treatment step showed different response and remission rates depending on the treatment group. Generally, all patients showed relatively high response rates after treatment in step 2 (remission rate in HRSD: 30%). Compared to the second treatment step in the STAR*D study, (remission rate 25%), remission rates of the present study were to some extent higher. Possible explanations are the multiprofessional treatment approach including high additional efforts such as psychotherapy, occupational therapy or physical therapy in the current study. However, comparing only the treatment step 2 of STAR*D (AD-Switch or -combination) with the corresponding treatment groups of the present study, remission rates do approach comparable numbers (remission rate [HRSD]: AD-comb: 42.9%; AD-Switch: 40.7%).

Focussing on the differences between the 4 treatment groups in step 2, it is notable that patients who received a non-antidepressant as the second step (lithium or SGAs) had lower depressive symptoms than subjects who received continued treatment with antidepressants (switch or combination). The good outcome of the lithium augmented patients is in line with empirical evidence for this treatment approach [9].

Also augmentation with SGA showed lower scores of depressive symptoms compared to AD-Switch and AD-Comb. Response rates were relatively high compared to previous studies. Bauer et al. (2009) found response rates of 55% for augmentation after non-response to antidepressant monotherapy [26]. For antidepressant augmentation with aripiprazole [27] and olanzapine [28],

response rates were 33.7% and 25%, respectively. In the meta-analysis of Nelson and Papakostas (2009) overall efficacy of augmentation with SGA in treatment-resistant depression has been proven and is in line with the data of our naturalistic study. There has been a lot of research regarding possible antidepressant effects of SGA focusing on the multiple effects of those substances on different neurotransmitters and their second messengers.

The mediocre outcome of switching the antidepressant in this naturalistic study is in line with recent findings of RCTs showing that there is no evidence supporting this strategy [5]. Instead there are data suggesting inferiority of continuing the hitherto not effective antidepressant [8]. Also AD-Comb was part of the second step of STAR*D: The combination included citalopram and bupropion with remission rates of 30%. But RCTs only found superiority for reuptake-inhibitors in combination with alpha-2-antagonists compared to placebo [29, 30].

In summary, although AD-Switch and AD-Comb show moderate remission rates in the present study, they might produce lower improvement and lower remission rates compared to Li-Augm or augmentation with SGAs. As noticed before, a possible reason for this is the relatively similar way of functioning of ADs, increasing the levels of serotonin and/or norepinephrine in the synaptic cleft (with few exceptions). However, antidepressants differ in the mode of action and specificity of increasing neurotransmitters. A possible conclusion could be that patients who do not respond to substances with this mode of functioning do have a higher benefit with medications of a different mode of action. Possible explanations of superiority of Li-Augm compared to AD-Switch or AD-Comb include the diversity of pharmacological functioning: Lithium influences the neurotransmitter-system on the level of second messengers and gene-regulation [31]. Previous research has also focused on possible antidepressant effects of SGAs particularly on the multiple effects of those substances on different neurotransmitters and their second messengers. For example, aripiprazole has a partial dopamine receptor agonism and quetiapine an additional norepinephrine-reuptake-inhibition, which both are relevant in other antidepressant substances [32, 33]. In contrast, AD just have impact on extracellular receptors with a minor influence on multiple neurotransmitters.

Conclusion

This naturalistic study confirmed that lithium augmentation as well as augmentation with SGA each showed better outcome than AD-Switch and AD-Comb. Possible reasons are the diversity of functioning compared to the homologous effects in the group of antidepressants. However, there is nevertheless the risk of additional side effects of these 2 medication groups. Lithium treatment should be conducted in line with the established safety procedures. SGA and their effect on metabolic function as well as tardive dyskinesias are present and are criticized as underestimated [34]. Especially for the group of SGA the costs of medication should be taken into account. Therefore different treatment options, for example, additional psychotherapy or ECT [35, 36] should be considered. In conclusion, this study indicates differences between treatment strategies after failure of primary treatment in unipolar depression. RCTs are absolutely necessary to confirm these findings.

Limitations

Despite the statistical control for influencing variables (medication, psychosocial factors, additional therapies, duration of treatment), the naturalistic design (no randomization to treatment groups) of the study can be regarded as a shortcoming and could influence the results. The lack of a defined measurement of non-response after phase I is also a major limitation. Therefore it is possible that not all patients really did show non-response to primary treatment. Furthermore the heterogeneous treatment in phase I could have had an influence on treatment outcome. Phase II was heterogeneous in treatment as well (different SGAs, different switch strategies, different AD combinations). Pharmacological differences of ADs were not fully considered in the question of the AD-comb or AD-switch. Therefore inferiority of those strategies could have been influenced by irrational switching or combination strategies. However, there is low evidence of efficacy of switching [5] or combination strategies [7] at all, and especially with regard to certain combinations or switching sequences. Another relevant aspect is that measurement at t2 was at discharge and not on a predefined time point. Although there were no significant differences of treatment duration between the 4 treatment arms, this could have had an influence on the results. In general it should be mentioned that there was no placebo group. Both groups with augmentation strategies received prolonged treatment with one antidepressant. It cannot be excluded that patients in these groups had lower depressive symptoms mainly because of prolonged exposure to the antidepressants. In conclusion, there is the possibility that treatment groups are not comparable. In further research there also should be an arm that continues the last treatment to observe effects of longer treatment and of spontaneous response. Therefore, the results in this naturalistic study indicate differences between these treatment strategies but all significant associations must be viewed with caution. Nevertheless, the present study is the first study that compared different pharmacological treatment options after failure of primary antidepressant monotherapy with each other. Despite the methodological limitations mentioned, this study under naturalistic condition is an important completion to findings from randomised and controlled studies [37, 38]. Either way, controlled studies, e.g., with randomization are required to confirm the findings from this study.

Conflict of Interest

Yes: TB received lecture fees from Lilly, Bristol-Myers-Squibb, Lundbeck, esparma and AstraZeneca.

Affiliations

- ¹ Department of Psychiatry, Charité University Medicine Berlin, Campus Mitte, Berlin, Germany
- ² Department of Psychiatry and Psychotherapy, Kliniken im Theodor-Wenzel-Werk, Berlin, Germany
- ³ Department of Psychiatry and Psychotherapy, Vivantes Wenckebach-Klinikum, Berlin, Germany
- ⁴ Department of Psychology, Humboldt-University, Berlin, Germany
- ⁵ Department of Psychiatry, Schlosspark-Klinik, Berlin, Germany and Department of Psychiatry, University Hospital, Technical University Dresden, Dresden, Germany

References

- 1 Rush AJ, Trivedi MH, Wisniewski SR *et al.* Acute and longer-term outcomes in depressed outpatients requiring one or several treatment steps: a STAR*D report. *Am J Psychiatry* 2006; 163: 1905–1917
- 2 Judd LL, Paulus MJ, Schettler PJ *et al.* Does incomplete recovery from first lifetime major depressive episode herald a chronic course of illness? *Am J Psychiatry* 2000; 157: 1501–1504
- 3 Bschor T. Therapy-resistant depression. *Expert Rev Neurother* 2010; 10: 77–86
- 4 Connolly KR, Thase ME. If at first you don't succeed: a review of the evidence for antidepressant augmentation, combination and switching strategies. *Drugs* 2011; 71: 43–64
- 5 Bschor T, Baethge C. No evidence for switching the antidepressant: systematic review and meta-analysis of RCTs of a common therapeutic strategy. *Acta Psychiatr Scand* 2010; 121: 174–179
- 6 Papakostas GI, Fava M, Thase ME. Treatment of SSRI-resistant depression: a meta-analysis comparing within- versus across-class switches. *Biol Psychiatry* 2008; 63: 699–704
- 7 Thase ME. Antidepressant combinations: widely used, but far from empirically validated. *Can J Psychiatry* 2011; 56: 317–323
- 8 Souery D, Serretti A, Calati R *et al.* Citalopram versus desipramine in treatment resistant depression: effect of continuation or switching strategies: a randomized open study. *World J Biol Psychiatry* 2011; 12: 364–375
- 9 Crossley NA, Bauer M. Acceleration and augmentation of antidepressants with lithium for depressive disorders: two meta-analyses of randomized, placebo-controlled trials. *J Clin Psychiatry* 2007; 68: 935–940
- 10 Nelson JC, Papakostas GI. Atypical antipsychotic augmentation in major depressive disorder: a meta-analysis of placebo-controlled randomized trials. *Am J Psychiatry* 2009; 166: 980–991
- 11 Nierenberg AA. Switch or augment? Lessons from STAR*D. *Ann Clin Psychiatry* 2011; 22 (4 Suppl 3): S4–S8
- 12 Markowitz JC. Evidence-based psychotherapies for depression. *J Occup Environ Med* 2008; 50: 437–440
- 13 Willich S. Randomisierte kontrollierte Studien – pragmatische Ansätze erforderlich. *Dtsch Ärzteblatt* 2006; 103: A2524–A2529
- 14 Kaptchuk TJ. The double-blind, randomized, placebo-controlled trial: gold standard or golden calf? *J Clin Epidemiol* 2001; 54: 541–549
- 15 Hamilton M. A rating scale for depression. *J Neurol Neurosurg Psychiatry* 1960; 23: 56–62
- 16 Hiller W, Zaudig M, Mombour W. IDCL: ICD-10 Checklists. Göttingen: Hogrefe; 2005
- 17 DGPPN B, KBV, AWMF, AkdÄ, BptK, BApK, DAGSHG, DEGAM, DGPM, DGPs, DGRW for the guideline group unipolar depression*. S3-Guideline/National Guideline for unipolar depression (in German). Berlin, Düsseldorf: DGPPN, ÄZQ, AWMF; 2009 [cited 2009]; 1. [available from: www.dgppn.de, www.versorgungsleitlinien.de, www.awmf-leitlinien.de]
- 18 Beck AT, Ward CH, Mendelson M *et al.* An inventory for measuring depression. *Arch Gen Psychiatry* 1961; 4: 561–571
- 19 Derogatis LR, Melisaratos N. The brief symptom inventory: an introductory report. *Psychol Med* 1983; 13: 595–605
- 20 Endicott J, Spitzer RL, Fleiss JL *et al.* The global assessment scale. A procedure for measuring overall severity of psychiatric disturbance. *Arch Gen Psychiatry* 1976; 33: 766–771
- 21 Guy W. Clinical Global Impression. In: Guy W (ed.). ECDEU Assessment Manual for Psychopharmacology. 1976
- 22 First M, Gibbon M, Spitzer R. Structured Clinical Interview for DSM-IV Axis I Disorders. New York NY: Biometrics Research Dept, New York State Psychiatric Institute; 1996
- 23 Olejnik S, Algina J. Measures of effect size for comparative studies: applications, interpretations, and limitations. *Contemp Edu Psychol* 2000; 25: 241–286
- 24 CIPS. International scales for psychiatry. (CIPS) CIPS (ed.). Göttingen: Beltz Test GmbH; 2005
- 25 Seemüller F, Riedel M, Obermeier M *et al.* Outcomes of 1014 naturalistically treated inpatients with major depressive episode. *Eur Neuropsychopharmacol* 2010; May; 20 (5): 346–355 Epub 2010 Jan 22
- 26 Bauer M, Pretorius HW, Constant EL *et al.* Extended-release quetiapine as adjunct to an antidepressant in patients with major depressive disorder: results of a randomized, placebo-controlled, double-blind study. *J Clin Psychiatry* 2009; 70: 540–549
- 27 Berman RM, Marcus RN, Swanink R *et al.* The efficacy and safety of aripiprazole as adjunctive therapy in major depressive disorder: a multicenter, randomized, double-blind, placebo-controlled study. *J Clin Psychiatry* 2007; 68: 843–853

- 28 Trivedi MH, Thase ME, Osuntokun O *et al.* An integrated analysis of olanzapine/fluoxetine combination in clinical trials of treatment-resistant depression. *J Clin Psychiatry* 2009; 70: 387–396
- 29 Carpenter LL, Yasmin S, Price LH. A double-blind, placebo-controlled study of antidepressant augmentation with mirtazapine. *Biol Psychiatry* 2002; 51: 183–188
- 30 Blier P, Ward HE, Tremblay P *et al.* Combination of antidepressant medications from treatment initiation for major depressive disorder: a double-blind randomized study. *Am J Psychiatry* 2010; 167: 281–288
- 31 Wada A. Lithium and neuropsychiatric therapeutics: neuroplasticity via glycogen synthase kinase-3beta, beta-catenin, and neurotrophin cascades. *J Pharmacol Sci* 2009; 110: 14–28
- 32 Davies MA, Sheffler DJ, Roth BL. Aripiprazole: a novel atypical antipsychotic drug with a uniquely robust pharmacology. *CNS Drug Rev* 2004; 10: 317–336
- 33 Pira L, Mongeau R, Pani L. The atypical antipsychotic quetiapine increases both noradrenaline and dopamine release in the rat prefrontal cortex. *Eur J Pharmacol* 2004; 504: 61–64
- 34 Carroll BJ. Antipsychotic drugs for depression? *Am J Psychiatry* 2010; 167: 216 author reply 219
- 35 McCullough JP Jr. Treatment for chronic depression using cognitive behavioral analysis system of psychotherapy (CBASP). *J Clin Psychol* 2003; 59: 833–846
- 36 UK ECT Review Group. Efficacy and safety of electroconvulsive therapy in depressive disorders: a systematic review and meta-analysis. *Lancet* 2003; 361: 799–808
- 37 Mulder RT, Frampton C, Joyce PR *et al.* Randomized controlled trials in psychiatry. Part II: their relationship to clinical practice. *Aust N Z J Psychiatry* 2003; 37: 265–269
- 38 Porter R, Frampton C, Joyce PR *et al.* Randomized controlled trials in psychiatry. Part 1: methodology and critical evaluation. *Aust N Z J Psychiatry* 2003; 37: 257–264