

## Erratum

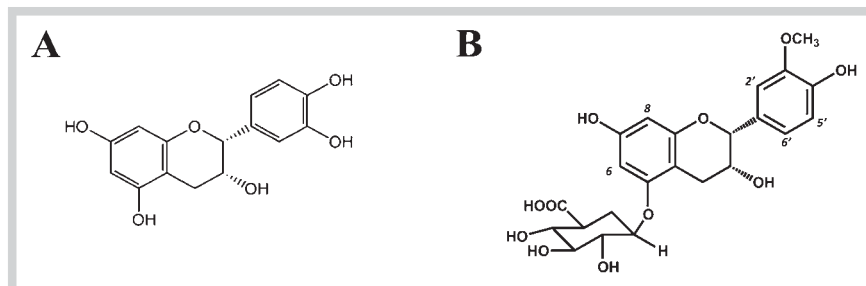
**Novel role of red wine-derived polyphenols in the prevention of Alzheimer's disease dementia and brain pathology: experimental approaches and clinical implications**

Giulio Maria Pasinetti

Planta Med 2012; 78: 1614–1619

DOI: 10.1055/s-0032-1315377

• **Fig. 3** has been corrected, Panel B is now an epicatechin, as it is stated in the legend.



**Fig. 3** Chemical structures of epicatechin and methyl-epicatechin glucuronide. **A** Epicatechin and **B** 3'-O-methyl-epicatechin-5-O-β-glucuronide, a bioactive metabolic epicatechin derivative that we recently reported, penetrates into brain tissue and promotes LTP responses in the brain [40].