

# Microendoscopic Removal of Deep-Seated Brain Tumors Using Tubular Retraction System

Shailendra Ratre<sup>1</sup> Yad Ram Yadav<sup>1</sup> Vijay Singh Parihar<sup>1</sup> Yatin Kher<sup>1</sup>

<sup>1</sup>Department of Neurosurgery, NSCB Medical College Jabalpur, Jabalpur, Madhya Pradesh, India

Address for correspondence Yad Ram Yadav, MCh, Department of Neurosurgery, NSCB Medical College and Hospital, 105 Nehru Nagar Opposite Medical College, Jabalpur, MP 482003, India (e-mail: yadavyr@yahoo.co.in).

J Neurol Surg A 2016;77:312–320.

## Abstract

**Background** Retraction of the overlying brain can be difficult without causing significant trauma when using traditional brain retractors with blades. These retractors may produce focal pressure and may result in brain contusion or infarction. Tubular retractors offer the advantage of low retracting pressure that is less likely to be traumatic. Low retraction pressure in the tubular retractor is due to the distribution of retraction force in all directions in a larger area.

**Material and Methods** We conducted a retrospective study of 100 patients with deep-seated tumors operated on from January 2010 to December 2014. Tumor removal was accomplished with the help of a microscope and/or endoscope. Tubular brain retractors sizes 23, 18, and 15 mm were used. Folding of the tubular retractor after making a longitudinal cut allowed a small corticectomy. Larger retractor sizes were used in the earlier part of the study and in larger tumors. All the patients were evaluated postoperatively by computed tomography scan on the first postoperative day, and subsequent scans were done as and when needed. Any brain contusion or infarctions and the amount of tumor removal were recorded.

**Results** A total of 74 patients had astrocytomas; 12, meningiomas; 4, colloid cyst of the third ventricle; 4, metastases; 4, primitive neuroectodermal tumor; 1, neurocytoma; and 1, ependymoma. Pure endoscopic excision without using a microscope was performed in 12 patients. Lesions were in the frontal (n = 34), parietal (n = 22), intraventricular (n = 16), basal ganglion or thalamic (n = 14), occipital (n = 10), and cerebellar (n = 4) areas. Total, near-total, and partial excision was achieved in 49, 29, and 22 patients, respectively. Use of a conventional retractor for excision of peripheral and superficial parts of a large tumor, small brain contusions, and technical failure were observed in 7, 4, and 1 patient, respectively. The low incidence of contusion may be partly due to the nonavailability of magnetic resonance imaging in the early postoperative period because of financial constraints.

**Conclusion** Removal of deep-seated tumors was safe and effective using our simple tubular retractor. It also helped minimize bleeding during surgery. A tubular brain retractor and conventional retractor can be used to complement each other if required.

## Keywords

- ▶ brain retractors
- ▶ brain tumors
- ▶ minimally invasive surgical procedures
- ▶ neuroendoscopy
- ▶ tubular retractor system

received  
July 27, 2015  
accepted after revision  
November 30, 2015  
published online  
April 11, 2016

© 2016 Georg Thieme Verlag KG  
Stuttgart · New York

DOI <http://dx.doi.org/10.1055/s-0036-1580595>.  
ISSN 2193-6315.

## Introduction

Deep-seated intraparenchymal and intraventricular brain lesions require retraction of the overlying brain. This retraction can be difficult without causing significant trauma. Traditional brain retractors using blades produce focal pressure and thus are traumatic.<sup>1</sup> Complications like hemorrhagic infarct or contusions are reported with the use of such retractors.<sup>2-5</sup>

Tubular retractors offer the advantage of low retracting pressure<sup>1-4,6,7</sup> that is unlikely to be disruptive.<sup>8</sup> Low retraction pressure in our retractor system is due to an even distribution of retraction force in all directions over the larger area. Different types of tubular retractors are available including our own retractor.<sup>1,6-11</sup> We report our experience in the excision of deep-seated tumors using a microendoscopic technique.

## Material and Methods

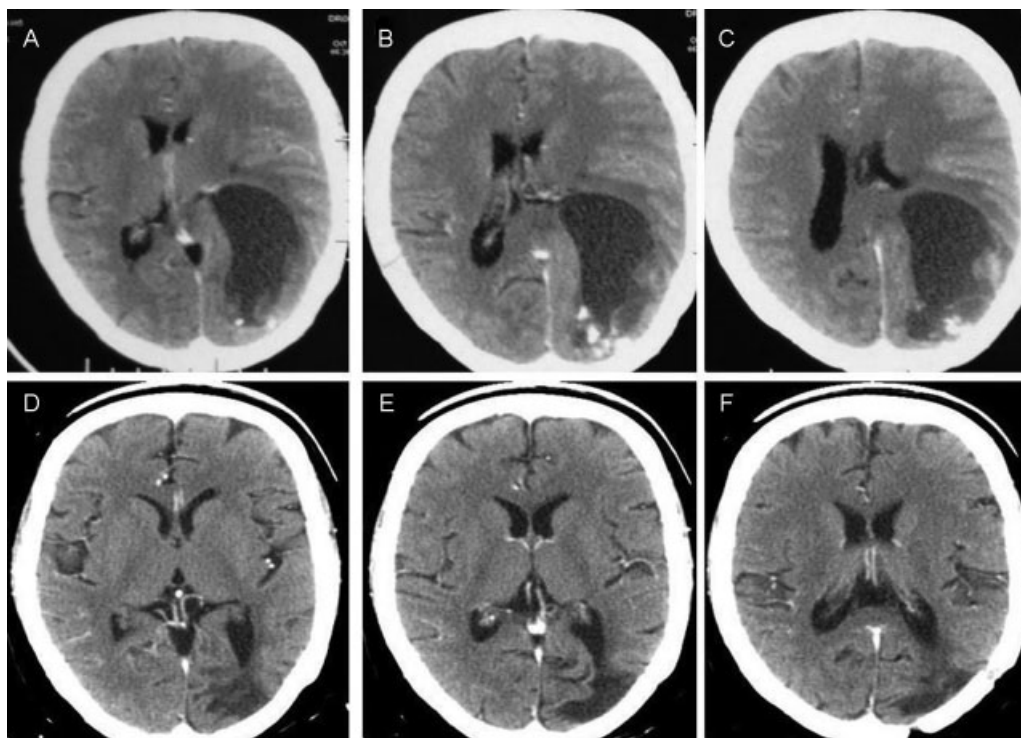
This is a retrospective study of 100 patients with deep-seated tumors treated from January 2010 to December 2014. The ethics committee of our institution approved the study. Data regarding history, physical examination, and relevant investigations were obtained from patients' records. Preoperative computed tomography (CT) scans (►Figs. 1A-C) were done in all patients, and a magnetic resonance imaging (MRI) scan (►Figs. 2A-C, 3A-C) could only be performed in 81 patients after 6 weeks of surgery.

Tumor removal was done in the initial 15 patients using a microscope with the help of a 23-mm tubular retractor.

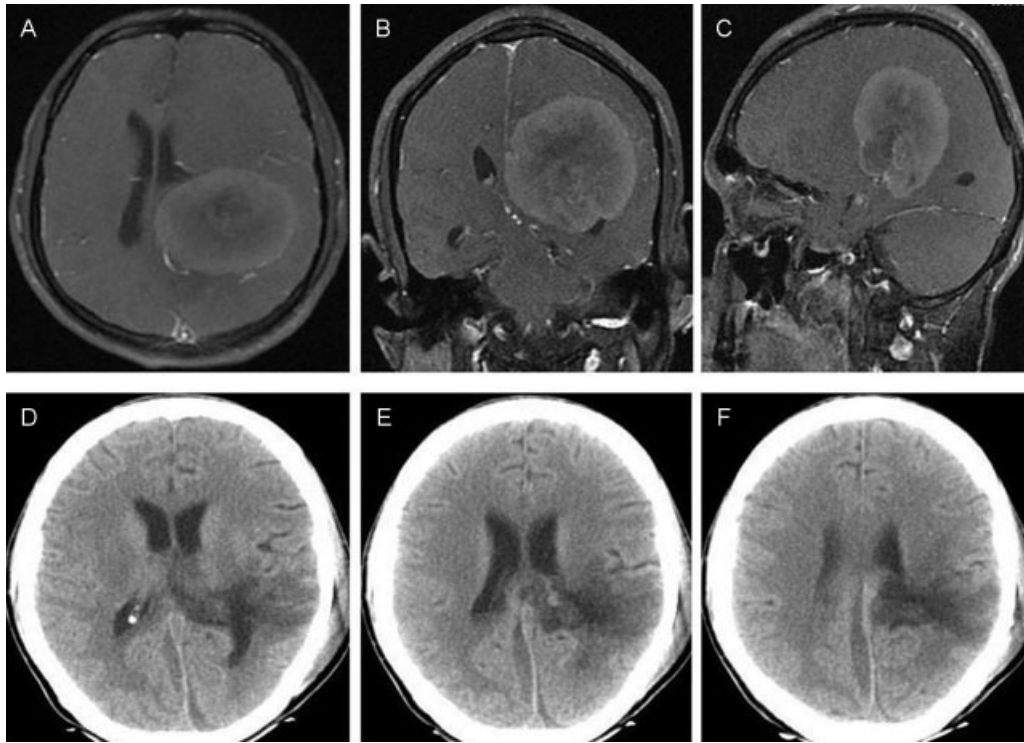
Tubular brain retractor sizes of 18 mm and 15 mm were used in the following 85 patients, and procedures were performed with the help of a microscope and endoscope (Karl Storz, Tuttlingen, Germany), a 0-degree rigid scope 30 cm long and 4 mm in diameter. Larger retractor sizes were also required in bigger tumors. Larger size retractors provided more space to work when sufficient space was created after tumor removal in a big lesion. A larger size retractor tube was also better than a small one because the more space created after tumor removal tended to make the small size retractor unstable. In most of the patients, initial tumor excision was done with the help of a microscope; an endoscope was used for the final inspection and removal of lesions from corners. Pure endoscopic removal was done in 12 cases that were smaller and less vascular. All the patients were evaluated postoperatively by CT scan on the first postoperative day, and subsequent scans were done as and when needed and after 3 months (►Fig. 1D-F, 2D-F, 3D-F). MRI could not be done in the early postoperative period in any of the patients. Postoperative MRI scans were performed in only 81 patients 6 weeks after surgery due to financial constraints. Any brain contusion or infarctions and the amount of tumor removal were recorded.

## Surgical Procedure

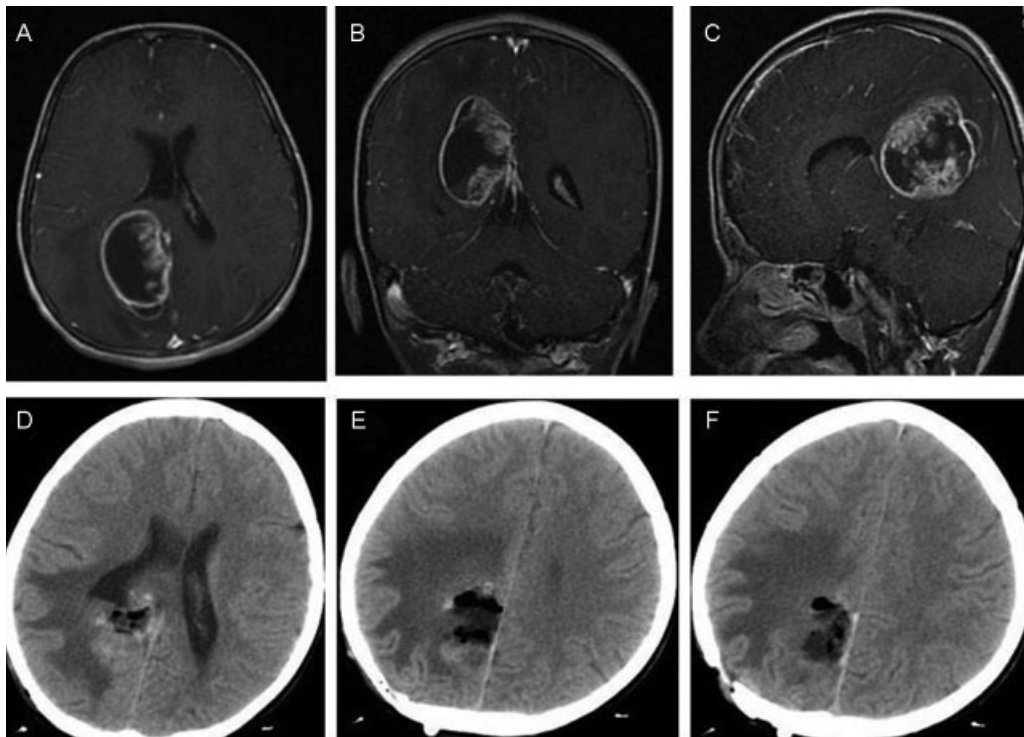
Details of the technique are described elsewhere.<sup>5</sup> A straight incision of 6 cm was made under general anesthesia. The dura mater was opened in a circular fashion after reflecting the bone flap. The silicone tubular retractors were precut to different lengths of 5, 6, 7, and 8 cm. A sterilized tube ~ 30 cm long was



**Fig. 1** (A-C) Preoperative computed tomography (CT) scan showing tumor in left occipital region pushing occipital horn anteriorly, and CT images (D-F) after tumor excision.



**Fig. 2** (A–C) Preoperative magnetic resonance imaging scan showing large tumor near left atrium that was removed (D–F) using tubular retractor.



**Fig. 3** (A–C) Preoperative magnetic resonance imaging scan showing tumor near right occipital horn and (D–F) computed tomography images after tumor excision.



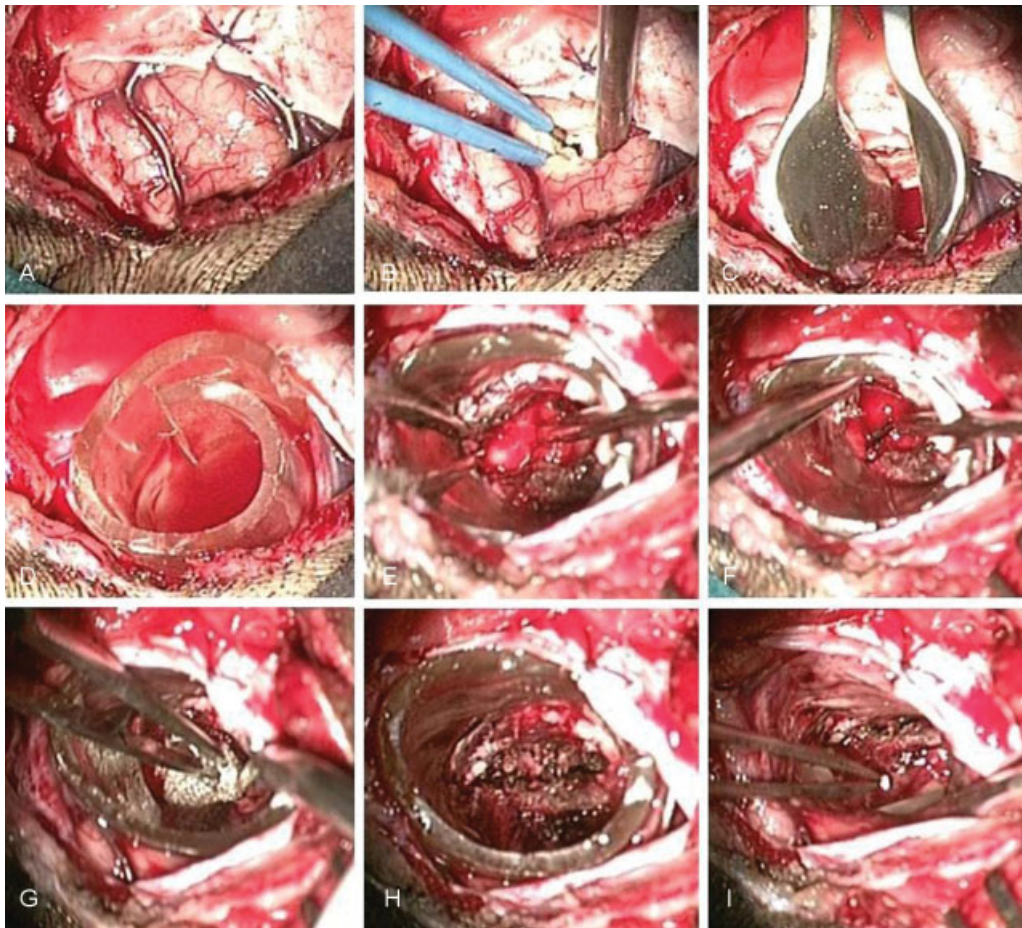
also kept ready, and it could be cut to the required size on the table. Silicone tubes of 15, 18, and 23 mm were used as a brain retractor. The tube used was 1 mm thick. It was cut in a longitudinal direction to allow folding. A small corticectomy of 5 mm was made to reach the tumor. Margins of the corticectomy were gently and slowly retracted using a Killian nasal speculum. The brain was made lax by removal of cerebrospinal fluid (CSF) before the introduction of the speculum.

The tubular retractor was folded to make a small-diameter tube so it could be introduced through a small corticectomy. Folded retractor, held by tissue forceps holding the free outer edge of the retractor (with one limb of the forceps outside and another inside the retractor) was introduced inside the opened Killian nasal speculum.<sup>5</sup> Tissue forceps and nasal speculum were removed leaving the tubular retractor in place. The folded retractor comes back to its normal tubular position after release. Its normal tubular configuration can be restored by gentle outward pressure on the retractor with two micro-instruments such as a suction cannula and dissector. Surgery was performed using a microscope or a 30-cm-long and 4-mm-diameter 0-degree telescope (Karl Storz) (► **Figs. 4 and 5**). A 30-cm-long scope versus an 18-cm-long scope keeps the camera head and light source cable away

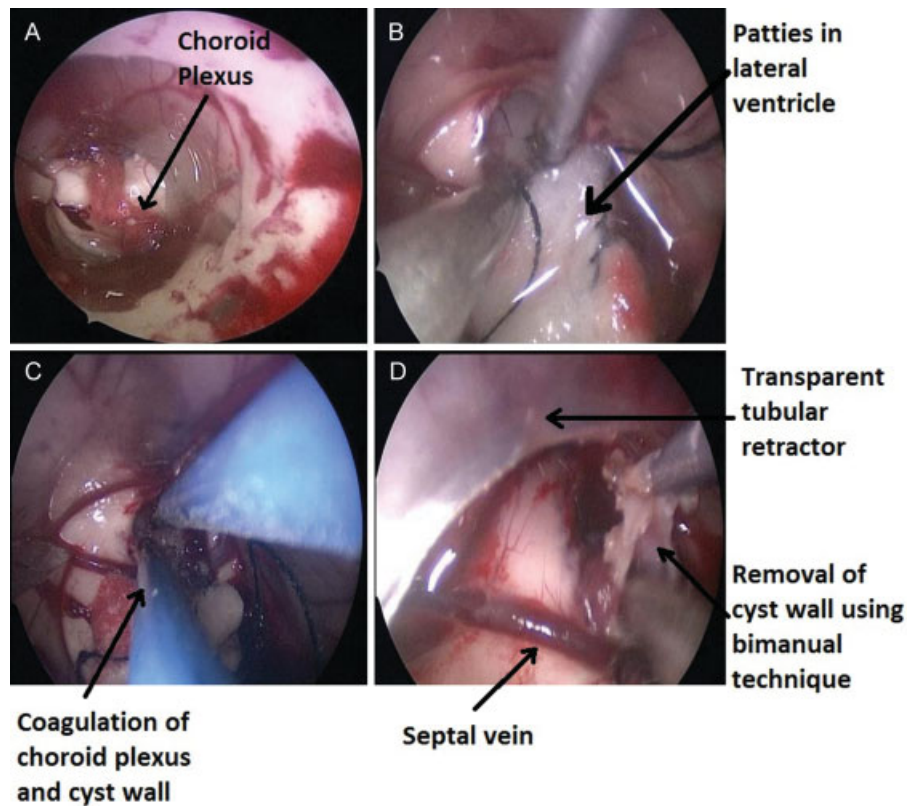
from the operative site. A telescope with its sheath was then fixed using a holder. Both hands could be used for removal of tumor with the help of a suction cannula, biopsy forceps, and other micro-instruments. Bipolar coagulation was done using a single-limb bipolar forceps. Most of the approaches were transcortical, interhemispheric route, or the access between dura matter and cortex was also used.

Proper selection of the site of incision is very important; the retractor should have ~90-degree angle with the floor of the operating room to work properly (► **Fig. 6**). Proper vision and good magnification were possible in all the cases. The brain should be lax before introduction of the nasal speculum by the removal of CSF to decrease brain damage, especially when the lesion is very large. Help from the anesthesiologist and removal of some part of the superficially lying tumor using a microsurgical technique could be required to make the brain lax, especially in large tumors before the introduction of the nasal speculum to avoid surrounding brain contusion.

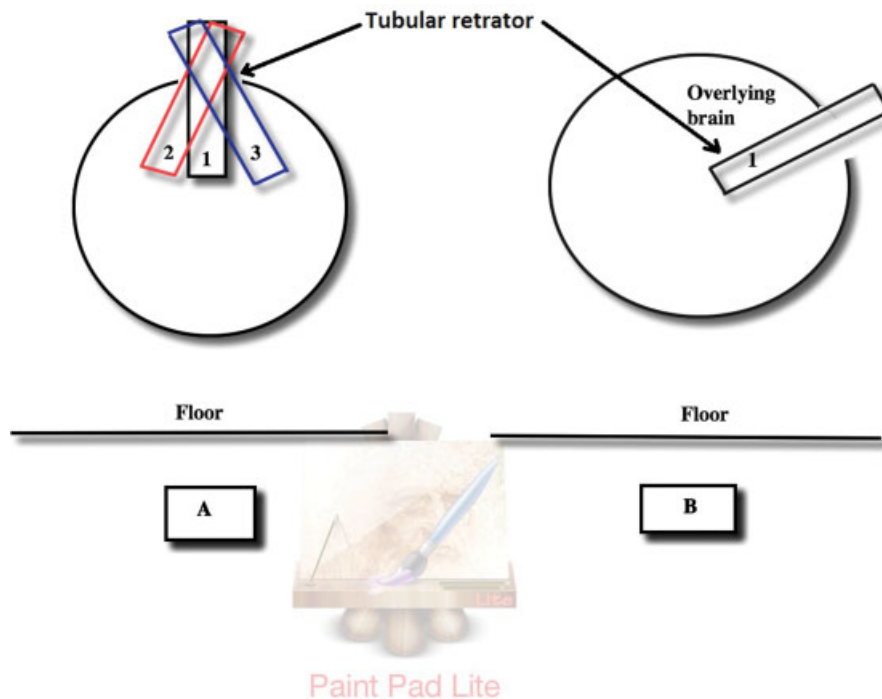
A tubular retractor could be effective in reducing bleeding by gently pushing it deep into the operative field and by angling the tube toward the bleeding vessel (► **Fig. 7**). Gently pushing the retractor deep and toward the bleeding vessel compresses the culprit vessels that helps minimize the



**Fig. 4** Microscopic removal of tumor near atrium showing (A) dural incision, (B) small corticectomy, (C) introduction of nasal speculum, (D) position of tubular retractor, (E, F) removal of tumor using bimanual technique, and (G–I) hemostasis using absorbable hemostat.

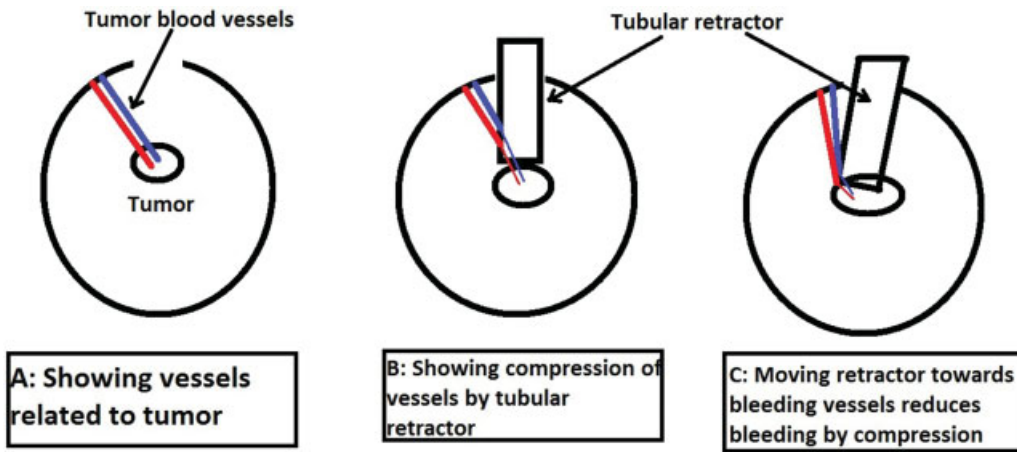


**Fig. 5** Endoscopic removal of colloid cyst from third ventricle. (A) Introduction of tubular retractor in lateral ventricle. (B) Suction of cerebrospinal fluid with the help of cotton patties. (C) Coagulation of choroid plexus and wall of colloid cyst. (D) Removal of colloid cyst wall using bimanual technique.



**Fig. 6** (A) Proper trajectory of retractor with ~90-degree angle with floor of operation is very important for the retractor to work properly. (B) It is difficult to maintain parallel orientation of the retractor to the floor. The overlying brain tends to cause pressure on the retractor, distorting its round shape and adding to the difficulty of the surgery.

This document was downloaded for personal use only. Unauthorized distribution is strictly prohibited.

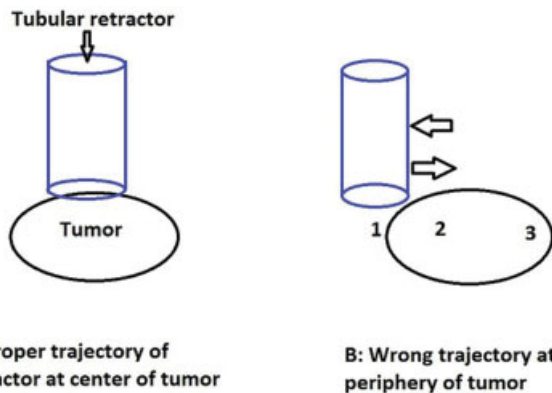


**Fig. 7** (A) A tubular retractor is effective in reducing bleeding by gently pushing the retractor deep in the operative field and angling it toward the bleeding vessel (B). Pushing the retractor deep and toward the bleeding vessel (C) compresses the culprit vessel minimizing the bleeding.

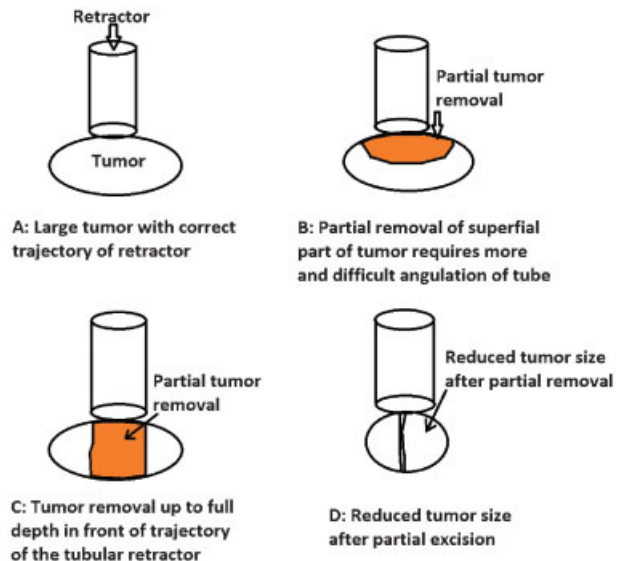
bleeding. The tubular retractor usually stays in position without any holder, especially when it is held 90 degrees to the floor of the operating table. Some micro-instrument held by the surgeon or an assistant is required to angulate the retractor away from its trajectory. The retractor should be positioned correctly at the center of the tumor (→ Fig. 8A). The surrounding brain tends to compress the wall of the retractor if the wrong trajectory at the margin of tumor is selected and an attempt is made to move the tube toward the center or other end of the tumor (→ Fig. 8B). It is difficult to access the whole area of a large tumor for its removal by the tubular retractor (→ Fig. 9). More angulation is required for removal of a large tumor from one end to other end, which is difficult to maintain; the surrounding brain tends to push the system (→ Fig. 9B). Full-thickness tumor removal in front of the tubular retractor from a superficial to deep aspect permits reduction of size of the lesion (→ Fig. 9C, D). Brain tissue may soil the endoscope lens if it is lying close to the cut part of the tubular retractor; rotation of the retractor prevents this

soiling. It is important to realize that this system is meant for deep-seated lesions; the superficial part lying at the corner is difficult to remove because it needs too much angulation. Use of a conventional retractor could be required in such situations. Direction of light in the microscope and endoscope should be parallel to the retractor wall. The transparent nature of the tube helped better visualize the surrounding brain tissue. Bleeding from the corticectomy margin was controlled while the retractor was gradually withdrawn.

This retractor should be autoclaved. It could also be sterilized by activated dialdehyde solution (Cidex solution;



**Fig. 8** (A) Trajectory of the tubular retractor should be at the center of the tumor. (B) It is difficult to angulate the retractor tube (arrow to right) toward the center (position 2) and the other end (position 3) after wrong placement at the periphery of the lesion. The surrounding brain (arrow to left) tends to push the retractor back.



**Fig. 9** (A) The retractor should be placed at the center of the tumor. (B) Angulation of the tube for removal of the full extent of the tumor from one end to other is difficult and requires more angulation. (C) Tumor removal up to full depth from the superficial to the deep part helps reduce tumor size (D), which can be removed easily because it is lying in front of the retractor.



Johnson and Johnson New Brunswick, New Jersey, United States) or by ethylene oxide sterilization.

## Results

Patients ranged from 2 to 76 years of age (68 male). There were 100 patients: astrocytoma  $n = 74$ , meningiomas  $n = 12$ , colloid cyst of third ventricle  $n = 4$ , metastasis  $n = 4$ , primitive neuroectodermal tumor  $n = 4$ , neurocytoma  $n = 1$ , and ependymoma  $n = 1$ . Pure endoscopic excision without using a microscope was performed in 12 patients (►Table 1). In 88 patients, the microscope was used for most of the tumor excision; the endoscope was used for the final inspection and removal of lesions in corners. Lesions were located in the frontal ( $n = 37$ ), parietal ( $n = 22$ ), intraventricular ( $n = 16$ ), basal ganglion and thalamic ( $n = 11$ ), occipital ( $n = 10$ ), and cerebellar ( $n = 4$ ) areas. Total, near-total, and partial excision was done in 49, 29, and 22 patients, respectively. The exact incidence of tumor resection could differ slightly because MRI scans could not be performed in all patients. Total excision was possible of all benign tumors. There was no infarction or infection. Brain contusions were observed in four patients.

Use of a conventional retractor for excision of parts lying superficially and peripherally was required in seven patients. MRI in the early postoperative period could not be performed in any of our patients due to financial constraints. The incidence of contusion may be higher than reported in our series because the CT scan is not as sensitive as MRI in the detection of small contusions. There was one technical failure in the initial period of the learning curve. The tubular retractor could not be used in this patient; a blade retractor was used for tumor excision. There was difficulty in maintaining the proper position of the tubular retractor. Tubular retractor was wrongly placed parallel to the operating room floor and was being compressed/distorted by the overlying brain. Blood loss during the whole procedure varied from 20 to 500 mL (average: 100 mL).

## Discussion

Expandable and nonexpandable tubular retractors have been used in various spinal techniques.<sup>12–14</sup> They were used for

foraminotomy, discectomy, lumbar lesions, thoracic pathologies, cervical myelopathy, spinal fusion, spinal infections, and for dural closure in intradural spinal pathology. They were also used for single-, two-, and multiple-level pathologies. Tubular retractors have been used in various cranial approaches such as intracranial hematomas,<sup>5</sup> cranial tumors,<sup>11,15–20</sup> colloid cyst,<sup>21,22</sup> arteriovenous malformation,<sup>1</sup> and for cavernous malformation.<sup>23</sup> Three-dimensional endoscopic visualization<sup>24</sup> and frameless stereotactic techniques<sup>6</sup> can be combined with the tubular retractor system for deep brain lesions.

The tubular retractor was found to be safe in our study. Other authors made similar observations.<sup>11,15,19,23–25</sup> It was effective in our series and in other reported series.<sup>18,19</sup> Tubular retractors provided excellent visualization of the underlying pathology and facilitated tumor removal and dissection resulting in 49% total and 29% near-total removal of tumor in our study. It allowed rotation of the tubular retractor and some change in the angle of approach without putting extra pressure on the brain tissue, which usually occurs when malleable or other ribbon-type retractors are used.<sup>25</sup> Tubular retractors were also effective in reducing bleeding by gently pushing the retractor deep in the operative field and by angling it toward the bleeding vessel. Our average blood loss was 100 mL. Similar advantages of helping in hemostasis were reported by Herrera et al.<sup>25</sup> Tubular retractors have been found to reduce postoperative wound infections significantly, as much as 10-fold compared with open spinal surgery.<sup>26,27</sup> The minimally invasive nature of the procedure reduced the risk of postoperative infection in spine surgeries.<sup>28</sup>

Advantage of our retractor is that a small corticectomy is required due to a longitudinal cut and folding technique of the retractor. It is transparent, lightweight, and versatile, can be moved in any direction, avoids time wasted in repositioning, and a holder is not required. The technique is simple, safe, inexpensive, and effective. One can use microscope or endoscope as needed. This tubular retractor system is readily available. Tubular retractor also helps reduce bleeding (►Fig. 7). Although we had four small contusions in our series, the soft and malleable tube usually helps prevent

**Table 1** Patient characteristics

Age, y	2–76
Sex	68 male patients
Pathologic type of tumor (n)	Astrocytoma (74), meningiomas (12), colloid cyst of third ventricle (4), metastasis (4), primitive neuroectodermal tumor (4), neurocytoma (1), ependymoma (1)
Type of surgery	Pure endoscopic in 12 cases; microscopic and endoscopic in 88 patients
Location (n)	Frontal (37), parietal (22), intraventricular (16), basal ganglion and thalamic (11), occipital (10), and cerebellar (4)
No. of tumor excisions	Total or near-total excision in 78 patients and subtotal in 22 patients
Complications	Four small contusions and one technical failure
Blood loss	Blood loss varied from 20 mL to 500 mL (average: 100 mL)

brain damage. These contusions were in large tumors, and the brain could not be properly relaxed before introducing the speculum. Similar results of reduced brain retraction-related injuries were reported.<sup>6,15,20,25</sup>

The technique discussed in this study was also associated with some limitations. There was one technical failure in the beginning of our learning curve due to incorrect planning of patient position. It was difficult to maintain retractor position, and there was distortion of the shape of the retractor by pressure from the surrounding brain. It is difficult to remove peripheral and superficial part of a large tumor with a tubular retractor as mentioned earlier; use of a conventional retractor could be required in such situations. The tubular retractor system, conventional blade retractor system, and retraction with the help of micro-instruments can be used for patient benefit. The retractor should be nearly perpendicular to the floor of the operating room to allow proper retraction. It is difficult to maintain parallel orientation of retractor to the floor. The overlying brain tends to cause pressure on the wall of the retractor, distorting its round shape and thus adding to the difficulty of surgery (►Fig. 6). Total tumor removal may be difficult especially in large tumors (►Fig. 9) and calcified tumors in the beginning of the learning curve.<sup>16</sup> Proper case selection, especially at the beginning of the learning curve, is required. We performed hematoma removal in the beginning of our learning curve, and only after removal of 50 hematomas did we start tumor excision. Proper planning about the site of skin incision and patient positioning is very important (►Fig. 6). This procedure is associated with a steep learning curve, which is commonly observed in most endoscopic procedures.<sup>29–31</sup> Surgeon should practice this procedure in the laboratory to avoid complications. Exact incidence of postoperative contusion could be higher due to the nonavailability of MRI in the early postoperative period. Nasal speculum opening (even if slow and gentle) may produce contusion in a tight brain especially in a large tumor. Every attempt must be made to make the brain lax before introduction of the speculum to avoid contusion. Likewise, the incidence of tumor excision could be different as postoperative MRI could be performed in 81% of patients. There is no holder in this system; one micro-instrument, held by the surgeon or assistant, is required to maintain that angulated position.

A pen-type grip and well-supported hand on the operative site is helpful to improve precision.<sup>32–34</sup> Single-shaft instruments are preferred rather than double-shaft instruments because they occupy less space.<sup>34</sup> The endoscope must be positioned properly in an already limited space. The scope may obstruct movement of the instruments.<sup>32</sup>

## References

- Fahim DK, Relyea K, Nayar VV, et al. Transtubular microendoscopic approach for resection of a choroidal arteriovenous malformation. *J Neurosurg Pediatr* 2009;3(2):101–104
- Rosenørn J, Diemer N. The risk of cerebral damage during graded brain retractor pressure in the rat. *J Neurosurg* 1985;63(4):608–611
- Singh L, Agrawal N. Stitch retractor—simple and easy technique to retract brain. *World Neurosurg* 2010;73(2):123–127
- Thiex R, Hans FJ, Krings T, Sellhaus B, Gilsbach JM. Technical pitfalls in a porcine brain retraction model. The impact of brain spatula on the retracted brain tissue in a porcine model: a feasibility study and its technical pitfalls. *Neuroradiology* 2005;47(10):765–773
- Yadav YR, Yadav S, Sherekar S, Parihar V. A new minimally invasive tubular brain retractor system for surgery of deep intracerebral hematoma. *Neurol India* 2011;59(1):74–77
- Greenfield JP, Cobb WS, Tsouris AJ, Schwartz TH. Stereotactic minimally invasive tubular retractor system for deep brain lesions. *Neurosurgery* 2008;63(4, Suppl 2):334–339, discussion 339–340
- Singh L, Agrawal N. Cylindrical channel retractor for intraventricular tumour surgery—a simple and inexpensive device. *Acta Neurochir (Wien)* 2009;151(11):1493–1497
- Ogura K, Tachibana E, Aoshima C, Sumitomo M. New microsurgical technique for intraparenchymal lesions of the brain: transcyliner approach. *Acta Neurochir (Wien)* 2006;148(7):779–785; discussion 785
- Cabbell KL, Ross DA. Stereotactic microsurgical craniotomy for the treatment of third ventricular colloid cysts. *Neurosurgery* 1996;38(2):301–307
- Ross DA. A simple stereotactic retractor for use with the Leksell stereotactic system. *Neurosurgery* 1993;32(3):475–476; discussion 476
- Ichinose T, Goto T, Morisako H, Takami T, Ohata K. Microroll retractor for surgical resection of brainstem cavernomas. *World Neurosurg* 2010;73(5):520–522
- Tan LA, O'Toole JE. Tubular retractor selection in minimally invasive spinal tumor resection. *J Neurosurg Spine* 2014;20(5):596–597; author reply 597–598
- Hur JW, Kim JS, Shin MH, Ryu KS. Minimally invasive posterior cervical decompression using tubular retractor: the technical note and early clinical outcome. *Surg Neurol Int* 2014;5:34
- Dong J, Rong L, Feng F, et al. Unilateral pedicle screw fixation through a tubular retractor via the Wiltse approach compared with conventional bilateral pedicle screw fixation for single-segment degenerative lumbar instability: a prospective randomized study. *J Neurosurg Spine* 2014;20(1):53–59
- Recinos PF, Raza SM, Jallo GI, Recinos VR. Use of a minimally invasive tubular retraction system for deep-seated tumors in pediatric patients. *J Neurosurg Pediatr* 2011;7(5):516–521
- Jo KW, Shin HJ, Nam DH, et al. Efficacy of endoport-guided endoscopic resection for deep-seated brain lesions. *Neurosurg Rev* 2011;34(4):457–463
- Raza SM, Recinos PF, Avendano J, Adams H, Jallo GI, Quinones-Hinojosa A. Minimally invasive trans-portal resection of deep intracranial lesions. *Minim Invasive Neurosurg* 2011;54(1):5–11
- Jo KI, Chung SB, Jo KW, Kong DS, Seol HJ, Shin HJ. Microsurgical resection of deep-seated lesions using transparent tubular retractor: pediatric case series. *Childs Nerv Syst* 2011;27(11):1989–1994
- Almenawer SA, Crevier L, Murty N, Kassam A, Reddy K. Minimal access to deep intracranial lesions using a serial dilatation technique: case-series and review of brain tubular retractor systems. *Neurosurg Rev* 2013;36(2):321–329; discussion 329–330
- Bernardo A, Evins AI, Tsiouris AJ, Stieg PE. A percutaneous trans-tubular middle fossa approach for intracanalicular tumors. *World Neurosurg* 2015;84(1):132–146
- Cohen-Gadol AA. Minitubular transcranial microsurgical approach for gross total resection of third ventricular colloid cysts: technique and assessment. *World Neurosurg* 2013;79(1):207.e7–207.e10
- Ajlan AM, Kalani MA, Harsh GR. Endoscopic transtubular resection of a colloid cyst. *Neurosciences (Riyadh)* 2014;19(1):43–46
- Noh JH, Cho KR, Yeon JY, Seol HJ, Shin HJ. Microsurgical treatment and outcome of pediatric supratentorial cerebral cavernous malformation. *J Korean Neurosurg Soc* 2014;56(3):237–242



- 24 Shoakazemi A, Evins AI, Burrell JC, Stieg PE, Bernardo A. A 3D endoscopic transtubular transcallosal approach to the third ventricle. *J Neurosurg* 2015;122(3):564–573
- 25 Herrera SR, Shin JH, Chan M, Kouloumberis P, Goellner E, Slavin KV. Use of transparent plastic tubular retractor in surgery for deep brain lesions: a case series. *Surg Technol Int* 2010;19:47–50
- 26 O'Toole JE, Eichholz KM, Fessler RG. Surgical site infection rates after minimally invasive spinal surgery. *J Neurosurg Spine* 2009;11(4):471–476
- 27 Ee WW, Lau WL, Yeo W, Von Bing Y, Yue WM. Does minimally invasive surgery have a lower risk of surgical site infections compared with open spinal surgery? *Clin Orthop Relat Res* 2014;472(6):1718–1724
- 28 Shousha M, Cirovic D, Boehm H. Infection rate after minimally invasive noninstrumented spinal surgery based on 4350 procedures. *Spine* 2015;40(3):201–205
- 29 Yadav YR, Madhariya SN, Parihar VS, Namdev H, Bhatele PR. Endoscopic transoral excision of odontoid process in irreducible atlantoaxial dislocation: our experience of 34 patients. *J Neurol Surg A Cent Eur Neurosurg* 2013;74(3):162–167
- 30 Yadav YR, Parihar V, Namdev H, Agarwal M, Bhatele PR. Endoscopic interlaminar management of lumbar disc disease. *J Neurol Surg A Cent Eur Neurosurg* 2013;74(2):77–81
- 31 Yadav YR, Parihar V, Pande S, Namdev H. Endoscopic management of colloid cysts. *J Neurol Surg A Cent Eur Neurosurg* 2014;75(5):376–380
- 32 Yadav YR, Parihar V, Kher Y. Complication avoidance and its management in endoscopic neurosurgery. *Neurol India* 2013;61(3):217–225
- 33 Yadav YR, Parihar V, Ratre S, Kher Y. Complication avoidance in endoscopic third ventriculostomy and its managements. *J Neurol Surg A Cent Eur Neurosurg* 2015; July 4 (Epub ahead of print)
- 34 Yadav YR, Parihar V, Ratre S, Kher Y, Iqbal M. Microneurosurgical skills training. *J Neurol Surg A Cent Eur Neurosurg* 2015; April 27 (Epub ahead of print)