

# Prophylactic Antibiotics in Twin Pregnancies Complicated by Previably Preterm Premature Rupture of Membranes

Olivia Myrick, MD<sup>1</sup> Sarah Dotters-Katz, MD<sup>2</sup> Matthew Grace, MD<sup>2</sup> Tracy Manuck, MD<sup>2</sup>  
Kim Boggess, MD<sup>2</sup> William Goodnight, MD, MSCR<sup>2</sup>

<sup>1</sup>Department of Obstetrics and Gynecology, Columbia University, New York, New York

<sup>2</sup>Division of Maternal Fetal Medicine, University of North Carolina, Chapel Hill, North Carolina

Address for correspondence Sarah Dotters-Katz, MD, Division of Maternal Fetal Medicine, University of North Carolina, 3010 Old Clinic Building, CB 7516, Chapel Hill, NC 27599-7516 (e-mail: sarahdk@med.unc.edu).

Am J Perinatol Rep 2016;6:e277–e282.

## Abstract

**Objective** This study aims to determine if antibiotics given for latency to women with twins and previable preterm premature rupture of membranes (PPROM) affect the duration from membrane rupture to delivery.

**Methods** A retrospective cohort study of twin pregnancies at a single center from 2000 to 2015 with previable (14<sup>0/7</sup>–22<sup>6/7</sup> weeks) PPRM was conducted. Women who were not candidates for expectant management or who elected for immediate delivery were excluded. Pregnancy complications, delivery data, and neonatal outcomes were compared between women who did and did not receive latency antibiotics. The primary outcome was latency.

**Results** Of 52 eligible women, 30 (64%) elected expectant management; 17 women received antibiotics and 13 did not. No demographic differences existed between the groups. The median gestational age of rupture was 20 and 20.3 weeks in the antibiotic group and no antibiotic group, respectively. Median latency was 0.8 and 2.4 weeks in the antibiotic and no antibiotic groups correspondingly ( $p = 0.21$ ). Overall, 58.8 and 23.1% of women who did and didn't receive antibiotics developed chorioamnionitis ( $p = 0.07$ ). Perinatal mortality and maternal complication rates were high, though not different between the groups.

**Conclusion** Currently, even though in singletons with previable PPRM there is a recommendation to consider administering antibiotics, in the setting of twins, no evidence exists to support this.

## Keywords

- ▶ multiple gestation
- ▶ PPRM
- ▶ previable preterm premature rupture of membranes
- ▶ twins

Preterm premature rupture of membranes (PPROM) occurs in 3 to 4.5% of pregnancies. It accounts for one-third of all preterm births and is associated with significant infant morbidity and mortality.<sup>1,2</sup> Compared with singletons, twins have both a higher rate of PPRM and a shorter latency from the time of PPRM to delivery, suggesting the greater impact of PPRM on outcomes in twins.<sup>3,4</sup>

Previably PPRM, defined as spontaneous ROM occurring between 13 and 23<sup>6/7</sup> weeks' gestational age is rare, occurring in 1.37% of twin and 0.52% of singleton pregnancies.<sup>4</sup> A retrospective cohort study reported that 43% of twins born following PROM at < 26 weeks survive, but 83% of survivors had significant neonatal morbidity.<sup>5</sup> This is in contrast to singletons, where though overall survival is comparable,

received  
May 3, 2016  
accepted after revision  
July 8, 2016

DOI <http://dx.doi.org/10.1055/s-0036-1587324>.  
ISSN 2157-6998.

Copyright © 2016 by Thieme Medical Publishers, Inc., 333 Seventh Avenue, New York, NY 10001, USA.  
Tel: +1(212) 584-4662.

License terms



frequencies of long-term neonatal morbidity appear lower, 52 to 73%.<sup>6-8</sup>

In singletons with PPROM occurring between 24 and 34 weeks' gestational age, antenatal corticosteroids, neuroprotective magnesium sulfate (24–32 weeks' gestation), and prophylactic antibiotics are associated with improved neonatal outcomes.<sup>9,10</sup> In addition, mothers carrying singleton gestations complicated by PPROM between 24 and 32 weeks' gestational age are typically offered prophylactic antibiotics (sometimes referred to as “latency” antibiotics), as this treatment increases the time between ROM and delivery by a median of 4 days and reduces perinatal morbidity.<sup>10</sup> A recent guideline published by the American Congress of Obstetrics and Gynecology noted that there was inadequate data on the previable period to recommend the use of antibiotic to increase latency, but stated that it should be considered based on level 2B–2C data.<sup>11</sup> However, there is wide variation in the use of prophylactic antibiotics in the setting of the PPROM < 24 weeks' gestation, and particularly among twins with PPROM < 24 weeks' gestation.

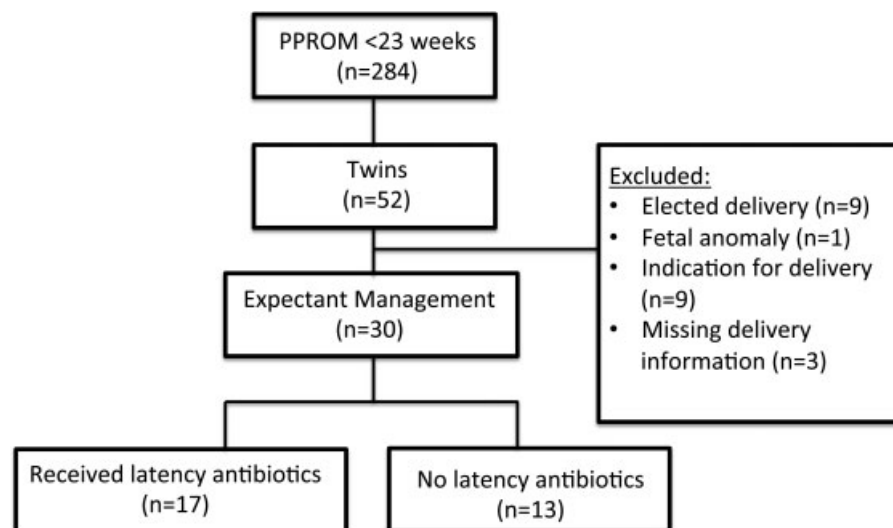
The primary objective of this study was to examine the association between prophylactic antibiotic use at the time of previable PROM and latency time from PPROM to delivery in twins.

## Material and Methods

This is a retrospective cohort study conducted at a single-tertiary care referral center. Using the International Classification of Diseases codes of PPROM, PROM, and spontaneous abortion (634.0, 634.1, 634.7, 634.8, 634.9, 635.0, 635.1, 635.2, 635.7, 635.9, 637.0, 637.1, 637.7, 637.8, and 637.9) all women from 2000 to 2015 with PPROM and twin gestation between 14<sup>0/7</sup> weeks and 23<sup>0/7</sup> weeks gestation were identified from the University of North Carolina (UNC) Women's Hospital delivery log and from billing records. Women were included if they had ruptured membranes

without labor at between 14<sup>0/7</sup> and 22<sup>6/7</sup> weeks, carried multiple gestations, and elected expectant management of the pregnancy after PPROM. ROM was defined as documentation in the medical record of ROM confirmed by evaluation of history, physical examination, nitrazine or fern test, or intra-amniotic fluid injection of indigo carmine dye.<sup>12</sup> The distinction between PPROM of twin A versus twin B was made at the time of initial evaluation for PPROM based on which twin was presenting on ultrasound as documented in the admission note. For the purposes of this study, twin A was the presenting twin and twin B was the nonpresenting twin at the time of PPROM evaluation. Women who elected immediate delivery (via either induction of labor or dilation and evacuation), who had a contraindication for expectant management (e.g., suspected chorioamnionitis, active maternal hemorrhage), presented in labor (regular uterine contractions with progressive cervical change) or who had iatrogenic PPROM due to amniocentesis, chorionic villus sampling, or laser procedure for twin–twin transfusion treatment were excluded. Women who delivered both fetuses within 24 hours of PPROM or were missing delivery data were also excluded. We defined prophylactic antibiotics as antibiotics given specifically for the purpose of prolonging latency as documented in the medical record and that were started within 24 hours of membrane rupture. Prophylactic antibiotics were given at the primary clinician's discretion; type and dose of antibiotic choice, as well as timing and length of administration, was recorded. The study was reviewed and approved by the Institutional Review Board at the UNC at Chapel Hill.

We compared pregnancy outcomes among those with and without exposure to prophylactic antibiotics for PPROM. The primary outcome was duration from ROM to delivery of the twin A. Secondary outcomes included duration from ROM to delivery of the twin B, perinatal mortality (fetal or neonatal death before 28 days after delivery), neonatal morbidity (among survivors to neonatal intensive care unit discharge



**Fig. 1** Study population.

composite of sepsis, bronchopulmonary dysplasia, pulmonary hypoplasia, necrotizing enterocolitis, and grade 3 or 4 intraventricular hemorrhage), and maternal morbidity (composite of intensive care unit admission, blood transfusion, sepsis, endometritis, hysterectomy, pulmonary embolism, deep vein thrombosis, wound infection, and readmission).

Bivariate analysis was performed with chi-square, Fischer exact test, or Mann–Whitney U test as appropriate. A log-rank test was used to analyze the effect of antibiotic exposure on latency to delivery for both twin A and separately for twin B, and a Cox hazard proportional ratio for antibiotic use and latency was calculated. Significance was set at  $p < 0.05$ . Statistical analysis was performed using Stata software (version 14.0; Stata Corporation, College Station, TX).

## Results

A total of 284 women were diagnosed with PPRM between 14<sup>0/7</sup> and 22<sup>6/7</sup> weeks at UNC Hospitals between 2000 and 2014. Of these, 52 (18.3%) were twin gestations, and 30 of the 52 women met the inclusion criteria (→Fig. 1).

Of the 30 women, 17 (57%) of 30 received prophylactic antibiotics; the remaining 13 (43%) were managed expectantly

**Table 1** Characteristics of women with previable preterm premature rupture of membranes and multiple gestation ( $n = 30$ , 2000–2015)

	Received antibiotics $n = 17$ (%)	No antibiotics $n = 13$ (%)	$p$ Value
Maternal age (y)	29.8 ± 7.6	32.3 ± 5.2	0.30
<b>Race</b>			
Black	5 (29.4)	5 (38.5)	0.76
White	9 (52.9)	8 (61.5)	
Other	1 (5.9)	0	
Missing	2 (11.8)	0	
Insurance (private)	10 (58.8)	7 (53.9)	0.13
Prior preterm birth	3 (17.7)	4 (30.8)	0.67
Primigravid	5 (29.4)	6 (46.2)	0.45
Tobacco use	3 (17.6)	1 (7.7)	0.61
<b>Chorionicity</b>			
Monochorionic	5 (29.4)	2 (15.4)	0.43
Dichorionic	12 (70.6)	11 (84.6)	

**Table 2** Admission and delivery data for women with previable PPRM and multiple gestation ( $n = 30$ , 2000–2015)

	Received antibiotics $n = 17$ (%)	No antibiotics $n = 13$ (%)	$p$ Value
Median PPRM gestational age, wk, (IQR)	20.0 (19.0, 21.9)	20.3 (17.3, 21.6)	0.45
ROM < 20 wk gestational age	7 (41)	6 (46)	0.99
<b>Twin presenting with ROM</b>			
Twin A	17 (100)	12 (92.3)	0.43
Twin B	0	1 (7.8)	
Subsequent ROM of twin B <sup>a</sup>	2/17 (11.8)	3/12 (25)	0.62
Cervical dilation at ROM (cm) <sup>b</sup>	0.4 ± 0.8	1.4 ± 1.6	0.22
White blood cell count at PPRM <sup>a</sup>	13.6 (11.5, 14.6)	11.9 (10.6, 16.2)	0.60
Received at least one dose of antenatal corticosteroids	6 (35.3)	4 (30.8)	> 0.99
Clinical chorioamnionitis	10 (58.8)	3 (23.1)	0.07
Birth weight A (g) <sup>c</sup>	594 ± 318	604 ± 392	0.82
Birth weight B (g) <sup>c</sup>	703 ± 493	858 ± 1,000	0.92
<b>Delivery mode A</b>			
Cesarean delivery	4 (23.5)	2 (15.4)	0.81
Vaginal delivery	12 (70.6)	11 (84.6)	
Dilation and evacuation	1 (5.9)	0	
Interval delivery attempted	7 (41.2)	5 (38.5)	> 0.99
<b>Delivery mode B</b>			
Cesarean delivery	4 (23.5)	4 (30.8)	> 0.99
Vaginal delivery	12 (70.6)	9 (69.2)	
Dilation and evacuation	1 (5.9)	0	

Abbreviations: IQR, interquartile range; PPRM, preterm premature rupture of membranes; ROM, rupture of membranes.

<sup>a</sup>Data only available from 18 women.

<sup>b</sup>Data only available from 29 women.

<sup>c</sup>Data only available from 22 women (missing data from previable deliveries where infant weight not recorded).

without prophylactic antibiotics. Of the 17 women, 13 women received a regimen of ampicillin 2 gm intravenous (IV) every 6 (q6) hours and erythromycin 250 mg IV q6 hours  $\times$  48 hours, followed by amoxicillin 250 mg orally every 8 (q8) hours and erythromycin 333 mg orally q8 hours  $\times$  5 days. One patient each received: Azithromycin only for women with a penicillin allergy, Ampicillin/Sulbactam 1.5 g IV q6 hours  $\times$  48 hours, ampicillin 2 g IV q6 hours and erythromycin 250 mg IV q6 hours  $\times$  48 hours only, and amoxicillin 250 mg orally q8 hours and erythromycin 333 mg orally q8 hours  $\times$  5 days.

The antibiotic-exposed and unexposed groups were similar with regards to demographic and baseline characteristics, including maternal age, race, parity (including the history of preterm birth), and chorionicity (**Table 1**). The median PPROM gestational age was also similar between antibiotic-exposed and unexposed pregnancies (20.0 vs. 20.3 weeks,  $p = 0.45$ ) (**Table 2**). Other PPROM characteristics, including cervical dilation at time of initial evaluation following PPROM and total white blood count at the time of rupture, were also similar between groups (**Table 2**). Of the 17, 10 (59%) women who receive antibiotics developed clinical chorioamnionitis, compared with 3 (23%) women who did not receive antibiotics ( $p = 0.07$ ).

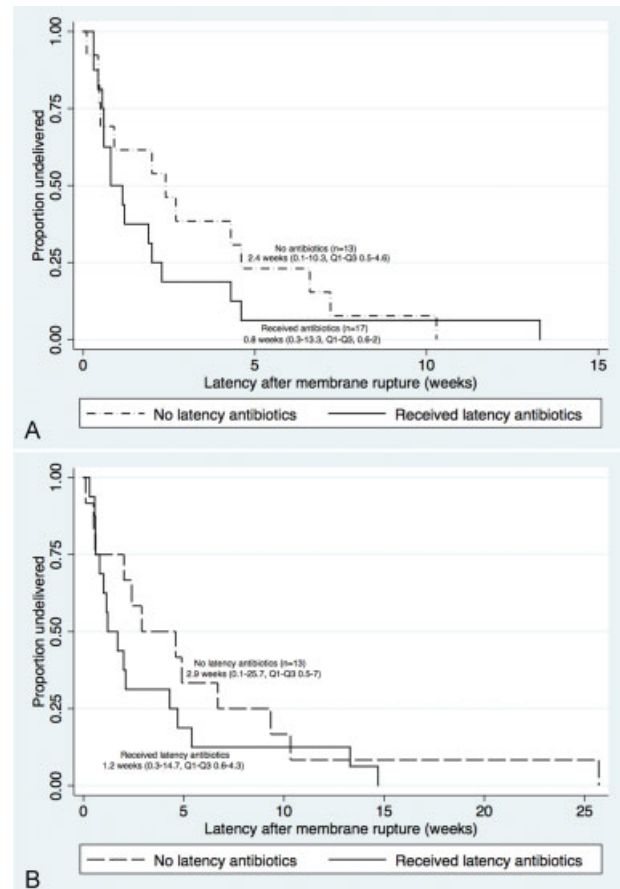
There were no significant differences in median gestational age at delivery for either twin A or twin B between two groups (**Table 2**). Compared with no prophylactic antibiotics, use of antibiotic prophylaxis was not associated with a significant difference in median latency time from ROM to delivery for either twin A or B, though there may be a trend toward longer latency for those who did not receive antibiotics for twin A (**Fig. 2A**) and twin B (**Fig. 2B**).

Of the 30 women, 13 (43%) women had maternal morbidity, 7 (41%) who received antibiotics and 6 (42%) who did not receive antibiotics,  $p < 0.99$ . Two women developed sepsis before delivery, one in each group. Six women received a transfusion of at least one unit of packed red blood cells, four in the antibiotic group and two in the no-antibiotic group. Endometritis occurred in two women who received antibiotics and one who did not. The acute renal injury occurred in one woman who received antibiotics, and one woman who did not get antibiotics had a pulmonary embolism. Finally, there were no differences in perinatal mortality, neonatal morbidity, or maternal morbidity (**Table 3**).

## Discussion

In this study, use of prophylactic antibiotics in the expectant management of previable PROM in twins did not prolong pregnancy compared with no antibiotics. Maternal morbidity was high, regardless of antibiotic use, which should be considered when counseling women with previable PROM in twins. The majority (57%) of women who elected to continue pregnancy received prophylactic antibiotics, despite data suggesting benefit or lack of harm.

Our findings should be considered in the context of previously reported data. There are some studies that suggest that the use of prophylactic antibiotics given in previable PPROM in singletons may improve neonatal outcomes and



**Fig. 2** (A) Duration of Latency of rupture of membranes for twin A. Kaplan–Meier curves showing latency after rupture of membranes by receipt of latency antibiotics ( $n = 17$ ) compared with nonreceipt of latency antibiotics ( $n = 13$ ). This figure compares duration of latency until delivery for twin A for pregnancies complicated by previable preterm premature rupture of membranes by use or nonuse of latency antibiotics at the time of membrane rupture. (B) Kaplan–Meier curves showing latency after rupture of membranes by receipt of latency antibiotics ( $n = 17$ ) compared with nonreceipt latency antibiotics ( $n = 13$ ). This figure compares duration of latency until delivery for twin B for pregnancies complicated by previable preterm premature rupture of membranes by use or nonuse of latency antibiotics at the time of membrane rupture.

other which describe the uses of antibiotics without specifically assessing the impact.<sup>13–17</sup> In one study of 28 singleton pregnancies with previable PPROM, Xiao et al reported a significant neonatal survival difference (51 vs. 0%) following prophylactic antibiotic use, though this was a retrospective study and antibiotics were given at clinician discretion.<sup>17</sup> Others have reported a decreased frequency of chorioamnionitis with the use of antibiotics for previable PPROM in singletons.<sup>18</sup>

Unfortunately, there is little data on the use of prophylactic antibiotics for PROM in twins. The ORACLE trial of antibiotics in PROM included 450 twins, and found no differences in delivery at 48 hours or 7 days, neonatal death, or major neonatal morbidities compared with no antibiotics.<sup>19</sup> However, the number of twins with ROM at  $< 24$  weeks was not reported thus we cannot generalize this data to the previable twin PROM population. Limited data suggest that while singletons with previable PPROM have improved outcomes

**Table 3** Neonatal data for infants born from multiple gestation after previale PPROM ( $n = 30$ , 2000–2015)

	Received antibiotics $n = 17$ (%)	No antibiotics $n = 13$ (%)	$p$ Value
Median latency A, wk, (IQR)	0.8 (0.6, 2)	2.4 (0.5, 4.6)	0.21
Median latency B, wk, (IQR)	1.2 (0.6, 4.3)	2.9 (0.9, 6.6)	0.25
Perinatal mortality (A)	13 (76.5)	10 (76.9)	> 0.99
Perinatal mortality (B)	11 (64.7)	10 (76.9)	0.38
Median delivery gestational age A, (IQR)	22.7 (18.8, 23.6)	23 (21.9, 23.4)	0.65
Median delivery gestational age B, (IQR)	23.0 (20.4, 23.7)	23.6 (22.6, 25.0)	0.44
Maternal morbidity <sup>a</sup>	7 (41.2)	6 (46.2)	> 0.99
Neonatal morbidity <sup>b</sup> (A)	2/4	1/3	> 0.99
Neonatal morbidity <sup>b</sup> (B)	1/6	1/3	> 0.99
Median delivery interval, wk, A to B, (IQR)	0 (0, 0.2)	0.1 (0, 0.4)	0.21

Abbreviations: IQR, interquartile range; PPROM, preterm premature rupture of membranes.

<sup>a</sup>Includes: Intensive care unit admission, sepsis, acute renal injury, blood transfusion, endometritis, hysterectomy, deep vein thrombosis, pulmonary embolism, and readmission.

<sup>b</sup>Infants who were born at 23 wk or above and survived were included, includes: necrotizing enterocolitis, grade 3 or 4 intraventricular hemorrhage, bronchopulmonary dysplasia, pulmonary hypoplasia, and sepsis.

in an era of modern neonatal medicine, with survival in the range of 38 to 56% (but major morbidity in surviving neonates ranges from 52 to 73%), though it is unclear if these improvements may be extrapolated to twin gestations.<sup>6–8</sup> Wong et al examined the outcomes of 23 multifetal pregnancies complicated by PPROM < 26 weeks' gestation and found 43% of twins survived, but only 17% survived without significant neonatal morbidity.<sup>5</sup> It is, therefore, uncertain whether the use of prophylactic antibiotics in singleton pregnancies complicated by previale PPROM (a clinical problem to which there is no consensus, but more data than for twins) can be appropriately extrapolated to twin gestations.

The physiology of twins is different from singletons and thus interventions may not be applicable between these groups. For example, 17-hydroxyprogesterone for preterm birth (PTB) prevention is effective in singletons, but not twins in reducing recurrent PTB risk.<sup>20</sup> The etiology of PROM may vary between twins and singletons, and thus prophylactic antibiotics may not be effective in twin previale PROM. Though not statistically significant, the trend toward longer latency in women who did not receive antibiotics, and the increased chorioamnionitis rate who did receive antibiotics, is concerning for the potential harm of prophylactic antibiotics in previale twin PROM. This study highlights the need for a differential clinical approach to twins compared with singletons.

Our study has limitations. As with any retrospective analysis, the study is subject to bias. The small sample size limits statistical power and our ability to assess the impact of certain variables such as prior preterm delivery. The high rate of perinatal mortality in the setting of twin PROM at < 24 weeks limits our evaluation of prophylactic antibiotics on neonatal morbidities. Our small sample also prevents evaluation of prophylactic antibiotic use at different gestational ages. Additionally, one-third of our patients received an

alternative antibiotic regimen, these varied in medication, dosage, and duration. This variation may have also contributed to the findings. The mean gestational age at PPROM was 20 weeks' gestation, thus latency of at least 3 to 4 weeks would be necessary to demonstrate impact on survival. In addition, several days of latency would be more clinically significant at a later gestational age, as there are significant survival differences when comparing PPROM at < 22 weeks with > 22 weeks.<sup>13,16,17</sup> It is also possible that interventions that impact latency in PPROM may be gestational age dependent. Finally, we do not have long-term outcomes data to examine the true effect of antibiotics on surviving infants. A prospective multicenter trial specifically enrolling twins with previale PROM might help to clarify how these patients should be counseled and managed.

The management of twins with previale PPROM is widely debated with variability in clinical practice. Currently, there is no evidence for or against the use of antibiotics in previale PPROM for twin pregnancy. The Society for Maternal Fetal Medicine and American Congress of Obstetrics and Gynecology suggest consideration of latency antibiotics for previale PPROM from 20 to 24 weeks.<sup>11,21</sup> Though we were underpowered to show a difference, our findings of no benefit with prophylactic antibiotic use in previale twin PROM and high rates of maternal morbidity, reinforce the importance of active counseling for women and families in this position.

#### Source

This study was performed at the University of North Carolina, Chapel Hill, NC.

#### Conflict of Interest

The authors report no conflict of interest.



**Note**

These data were presented as a poster at the Infectious Disease Society of Obstetrics and Gynecology; August 6–8, 2015, Portland, OR.

**Acknowledgment**

None.

**References**

- 1 Gibbs RS, Blanco JD. Premature rupture of the membranes. *Obstet Gynecol* 1982;60(6):671–679
- 2 Meis PJ, Ernest JM, Moore ML. Causes of low birth weight births in public and private patients. *Am J Obstet Gynecol* 1987;156(5):1165–1168
- 3 Bianco AT, Stone J, Lapinski R, Lockwood C, Lynch L, Berkowitz RL. The clinical outcome of preterm premature rupture of membranes in twin versus singleton pregnancies. *Am J Perinatol* 1996;13(3):135–138
- 4 Mercer BM, Crocker LG, Pierce WF, Sibai BM. Clinical characteristics and outcome of twin gestation complicated by preterm premature rupture of the membranes. *Am J Obstet Gynecol* 1993;168(5):1467–1473
- 5 Wong LF, Holmgren CM, Silver RM, Varner MW, Manuck TA. Outcomes of expectantly managed pregnancies with multiple gestations and preterm premature rupture of membranes prior to 26 weeks. *Am J Obstet Gynecol* 2015;212(2):215.e1–215.e9
- 6 Dinsmoor MJ, Bachman R, Haney EI, Goldstein M, Mackendrick W. Outcomes after expectant management of extremely preterm premature rupture of the membranes. *Am J Obstet Gynecol* 2004;190(1):183–187
- 7 Manuck TA, Eller AG, Esplin MS, Stoddard GJ, Varner MW, Silver RM. Outcomes of expectantly managed preterm premature rupture of membranes occurring before 24 weeks of gestation. *Obstet Gynecol* 2009;114(1):29–37
- 8 van der Marel I, de Jonge R, Duvekot J, Reiss I, Brussé I. Maternal and neonatal outcomes of preterm premature rupture of membranes before viability [in English]. *Klin Padiatr* 2016;228(2):69–76
- 9 Rouse DJ, Hirtz DG, Thom E, et al; Eunice Kennedy Shriver NICHD Maternal-Fetal Medicine Units Network. A randomized, controlled trial of magnesium sulfate for the prevention of cerebral palsy. *N Engl J Med* 2008;359(9):895–905
- 10 Mercer BM, Miodovnik M, Thurnau GR, et al; National Institute of Child Health and Human Development Maternal-Fetal Medicine Units Network. Antibiotic therapy for reduction of infant morbidity after preterm premature rupture of the membranes. A randomized controlled trial. *JAMA* 1997;278(12):989–995
- 11 Obstetric Care Consensus No. Obstetric care consensus no. 4 summary: periviable birth. *Obstet Gynecol* 2016;127(6):1184–1186
- 12 Simhan HN, Canavan TP. Preterm premature rupture of membranes: diagnosis, evaluation and management strategies. *BJOG* 2005;112(Suppl 1):32–37
- 13 Falk SJ, Campbell LJ, Lee-Parritz A, et al. Expectant management in spontaneous preterm premature rupture of membranes between 14 and 24 weeks' gestation. *J Perinatol* 2004;24(10):611–616
- 14 Fortunato SJ, Welt SI, Eggleston MK Jr, Bryant EC. Active expectant management in very early gestations complicated by premature rupture of the fetal membranes. *J Reprod Med* 1994;39(1):13–16
- 15 Grisaru-Granovsky S, Eitan R, Kaplan M, Samueloff A. Expectant management of midtrimester premature rupture of membranes: a plea for limits. *J Perinatol* 2003;23(3):235–239
- 16 Waters TP, Mercer BM. The management of preterm premature rupture of the membranes near the limit of fetal viability. *Am J Obstet Gynecol* 2009;201(3):230–240
- 17 Xiao ZH, André P, Lacaze-Masmonteil T, Audibert F, Zupan V, Dehan M. Outcome of premature infants delivered after prolonged premature rupture of membranes before 25 weeks of gestation. *Eur J Obstet Gynecol Reprod Biol* 2000;90(1):67–71
- 18 Morales WJ, Talley T. Premature rupture of membranes at < 25 weeks: a management dilemma. *Am J Obstet Gynecol* 1993;168(2):503–507
- 19 Kenyon SL, Taylor DJ, Tarnow-Mordi W; ORACLE Collaborative Group. Broad-spectrum antibiotics for preterm, prelabour rupture of fetal membranes: the ORACLE I randomised trial. *Lancet* 2001;357(9261):979–988
- 20 Rouse DJ, Caritis SN, Peaceman AM, et al; National Institute of Child Health and Human Development Maternal-Fetal Medicine Units Network. A trial of 17 alpha-hydroxyprogesterone caproate to prevent prematurity in twins. *N Engl J Med* 2007;357(5):454–461
- 21 American College of Obstetricians and Gynecologists; Society for Maternal-Fetal Medicine. ACOG obstetric care consensus no. 3: periviable birth. *Obstet Gynecol* 2015;126(5):e82–e94