

Association of D-dimer Levels with Clinical Event Rates and the Efficacy of Betrixaban versus Enoxaparin in the APEX Trial

C. Michael Gibson¹ Lisa K. Jennings² Gerald Chi¹ Megan K. Yee¹ Rim Halaby¹ Tarek Nafee¹
Fahad AlKhalfan¹ Mathieu Kerneis¹ Serge Korjian¹ Yazan Daaboul¹ Samuel Z. Goldhaber³
Russel D. Hull⁴ Adrian F. Hernandez⁵ Alexander T. Cohen⁶ Robert A. Harrington⁷

¹Cardiovascular Division, Department of Medicine, Beth Israel Deaconess Medical Center, Harvard Medical School, Boston, Massachusetts, United States

²CirQuest Labs, The University of Tennessee Health Science Center, Memphis, Tennessee, United States

³Cardiovascular Division, Brigham and Women's Hospital, Harvard Medical School, Boston, Massachusetts, United States

⁴Division of Cardiology, Faculty of Medicine, University of Calgary, Alberta, Canada

⁵Division of Cardiology, Duke University and Duke Clinical Research Institute, Durham, North Carolina, United States

⁶Department of Haematological Medicine, Guy's and St. Thomas' Hospitals, King's College London, London, United Kingdom

⁷Department of Medicine, Stanford University, Stanford, California, United States,

Address for correspondence C. Michael Gibson, MS, MD, Cardiovascular Division, Department of Medicine, Beth Israel Deaconess Medical Center, Harvard Medical School, 330 Brookline Avenue, Suite OV-540, Boston, MA 02215, United States (e-mail: mgibson@bidmc.harvard.edu).

TH Open 2018;2:e16–e24.

Abstract

Background Elevated D-dimer concentrations are associated with an increased risk of venous thromboembolism (VTE). However, they may also provide prognostic value. The present analysis sought to study the association of D-dimer levels with VTE event rates and the efficacy of betrixaban versus enoxaparin in the APEX trial.

Methods Hospitalized acutely medically ill subjects ($n = 7,513$) were randomized in a double-dummy double-blind fashion to either extended-duration oral betrixaban (80 mg once daily for 35–42 days) or standard dose subcutaneous enoxaparin (40 mg once daily for 10 ± 4 days) for venous thromboprophylaxis. D-dimer was assessed using a central core laboratory measurement.

Results For every 0.25 $\mu\text{g}/\text{mL}$ increase in D-dimer concentration, there was a 2% increase in the relative risk of experiencing the primary efficacy endpoint (asymptomatic deep vein thrombosis [DVT], symptomatic DVT, nonfatal pulmonary embolism, or VTE-related death) in both the betrixaban ($p < 0.001$) and enoxaparin ($p < 0.001$) treatment arms. Among D-dimer-positive ($\geq 2 \times$ upper limit of normal; corresponding to $\geq 1.00 \mu\text{g}/\text{mL}$) subjects, extended-duration betrixaban reduced the risk of experiencing the primary efficacy outcome (5.4% [$n = 124$] vs. 7.6% [$n = 170$]; odds ratio = 0.69; 95% confidence interval: 0.55–0.88; absolute risk reduction = 2.2%, number needed to treat = 46, $p = 0.003$). There was no interaction between D-dimer and the treatment effect ($p_{\text{int}} = 0.53$).

Conclusion Extended-duration betrixaban was superior to standard-duration enoxaparin, irrespective of D-dimer level at baseline. To prevent one VTE event, 46 D-dimer-positive patients would need to be treated with betrixaban.

Keywords

- ▶ D-dimer
- ▶ betrixaban
- ▶ deep vein thrombosis
- ▶ pulmonary embolism
- ▶ venous thromboembolism

received
September 5, 2017
accepted
November 20, 2017

DOI <https://doi.org/10.1055/s-0037-1615288>.
ISSN 2512-9465.

© 2018 Georg Thieme Verlag KG
Stuttgart · New York

License terms



Background

D-dimer is a fibrin degradation product and a marker for clot formation and lysis. D-dimer is elevated in a wide variety of illnesses, most notably venous thromboembolism (VTE),¹⁻³ and is used as a diagnostic screening tool to exclude VTE among subjects with a low-to-intermediate clinical probability of deep vein thrombosis (DVT) or pulmonary embolism (PE).⁴⁻⁶ Elevated D-dimer levels are also associated with an increased risk of recurrent VTE and mortality.⁷⁻¹⁰ Since D-dimer concentration is often used to identify medical subjects at a high risk of VTE, we hypothesized that D-dimer may help identify subjects who might have a modifiable risk and who might benefit from extended-duration thromboprophylaxis following hospitalization for an acute medical illness. The aims of this analysis were to evaluate the association of D-dimer with VTE outcomes and to assess possible modulation of the treatment effect of betrixaban versus enoxaparin as a function of D-dimer concentration.

Methods

Study Design and Endpoints

The Acute Medically Ill VTE Prevention with Extended Duration Betrixaban (APEX) trial was a randomized, double-blind, double-dummy, active controlled, multinational clinical trial that evaluated the efficacy and safety of extended-duration VTE prophylaxis (ClinicalTrials.gov identifier: NCT01583218). Acutely ill hospitalized medical subjects at risk of VTE ($n = 7,513$) were randomized to standard-duration enoxaparin for 10 ± 4 days ($n = 3,754$) or extended-duration betrixaban for 35 to 42 days ($n = 3,759$). The study design and primary results of the APEX trial have been previously published.^{11,12}

The primary efficacy outcome was the composite of asymptomatic proximal DVT, symptomatic proximal or distal DVT, symptomatic nonfatal PE, or death from VTE through visit 3 or day 42. The primary efficacy outcome was also assessed through the end of the study or day 77. The primary safety endpoint of the study was major bleeding through 7 days after discontinuation of study medication. D-dimer levels were measured at the time of enrollment by both central (CirQuest Labs, Memphis, Tennessee, United States) and local laboratories. Quantitative D-dimer methods employed at local sites include the turbidimetric assay, enzyme-linked immunosorbent assay, and STA Liatest D-Di immunoturbidimetric assay (Diagnostica Stago, Asnières-sur-Seine, France). At the central laboratory, D-dimer was measured by the STA Liatest D-Di immunoturbidimetric assay (Diagnostica Stago, Asnières-sur-Seine, France).

Statistical Analysis

Analyses were performed using SAS version 9.4 (Cary, North Carolina, United States). In this substudy, a positive D-dimer was defined as $\geq 2 \times$ upper limit of normal (ULN) (corresponding to $\geq 1.00 \mu\text{g/mL}$) as measured by the central laboratory. If the central D-dimer was missing, the value

was imputed using the local laboratory measurement. D-dimer was analyzed as both a categorical variable (positive [$\geq 2 \times$ ULN] or negative [$< 2 \times$ ULN]) and as a continuous variable. Analyses were further stratified by dosing criteria (severe renal dysfunction or strong concomitant P-glycoprotein inhibitor use, or neither) within the D-dimer-positive and D-dimer-negative groups.

Baseline characteristics were compared across D-dimer tertiles (T_1 : $< 0.85 \mu\text{g/mL}$; T_2 : ≥ 0.85 to $< 1.89 \mu\text{g/mL}$; T_3 : $\geq 1.89 \mu\text{g/mL}$) and stratified by treatment arms. Values for continuous variables were reported as the mean \pm standard deviation or median and interquartile range when specified. Values for categorical variables were reported as the number and proportion. A two-sample *t*-test was used to evaluate the difference in means for continuous variables between treatment groups within each tertile. Analysis of variance and Kruskal-Wallis tests (if median reported) were used to test the difference of means across tertiles. A chi-square test was used for the analysis of categorical variables.

Efficacy was assessed in the modified intention-to-treat (mITT) population, which consists of all subjects who were administered at least one dose of study drug and in whom follow-up assessment data were evaluable on one or more efficacy components. A comparison to the MAGELLAN trial was performed to match the methodology used in that study, using only central D-dimer (not imputing local D-dimer if central is missing) and the primary efficacy outcome population, which includes all patients in the mITT population who had assessment of all components of the primary efficacy endpoint. All efficacy analyses used treatment as stratified. The safety endpoints were analyzed within the safety population, which included all randomized subjects who received any portion of either study drug. All safety analyses used treatment as received.

The risk of VTE was modeled using D-dimer concentration in a logistic regression model, within each treatment arm. Logistic regression was used to determine the increase in odds of VTE comparing betrixaban to enoxaparin stratified by D-dimer category. The independent relationship between D-dimer and VTE was assessed by fitting a multivariate model. To control for possible confounders of VTE, a stepwise selection approach at a significance threshold of $p < 0.15$ was applied. The covariates were retained in the final model if the adjusted *p*-value was < 0.05 , which included age, duration of hospitalization, prior VTE, and previous thromboprophylaxis ≤ 96 hour. Finally, the interaction term of D-dimer (as both a categorical and continuous variable) on the treatment effect was tested.

Results

Baseline Characteristics

Baseline characteristics were well-balanced across D-dimer tertiles and between treatment arms (**► Table 1**). There were three subjects in the betrixaban arm and four subjects in the enoxaparin arm that were missing both central and local laboratory measurements.

Table 1 Characteristics of subjects at baseline

Characteristic ^a	1st tertile			2nd tertile			3rd tertile			p-Value	6-way p-value
	Enoxaparin, N = 1,233	Betrixaban, N = 1,238	p-Value	Enoxaparin, N = 1,241	Betrixaban, N = 1,235	p-Value	Enoxaparin, N = 1,240	Betrixaban, N = 1,240	p-Value		
Age, y	76.0 ± 8.12	76.3 ± 7.97	0.46	76.6 ± 8.42	77.1 ± 8.64	0.14	75.9 ± 8.39	76.5 ± 8.55	0.10	0.008	
Male sex, no. (%)	562 (45.6)	583 (47.1)	0.45	555 (44.7)	553 (44.8)	0.98	581 (46.9)	554 (44.7)	0.28	0.693	
Mean weight, kg	82.4 ± 19.70	81.1 ± 19.50	0.11	80.2 ± 19.74	80.4 ± 19.50	0.80	79.6 ± 18.61	78.1 ± 18.54	0.04	<0.001	
Body mass index ^b	30.2 ± 6.73	29.7 ± 6.80	0.06	29.5 ± 6.99	29.4 ± 6.75	0.81	28.9 ± 6.27	28.5 ± 6.20	0.10	<0.001	
Median no. of days hospitalization (IQR)	10 (8–14)	10 (7–14)	0.73	10 (8–14)	10 (7–14)	0.44	10 (8–14)	10 (7–14)	0.17	0.20	
Creatinine clearance, no. (%) ^c			0.42			0.95			0.09	<0.001	
< 15 mL/min	0	0	-	0	0	-	0	1 (0.1)	-	-	
15 to <30 mL/min	30 (2.4)	39 (3.2)	-	52 (4.2)	50 (4.1)	-	67 (5.4)	84 (6.8)	-	-	
30 to <60 mL/min	473 (38.4)	486 (39.3)	-	520 (41.9)	526 (42.6)	-	523 (42.2)	569 (45.9)	-	-	
60 to <90 mL/min	459 (37.2)	461 (37.2)	-	443 (35.7)	436 (35.3)	-	433 (34.9)	388 (31.3)	-	-	
≥90 mL/min	269 (21.8)	252 (20.4)	-	223 (18.0)	218 (17.7)	-	214 (17.3)	192 (15.5)	-	-	
Missing	2 (0.2)	0 (0.0)	-	3 (0.2)	5 (0.4)	-	3 (0.2)	6 (0.5)	-	-	
Race or ethnic group, no. (%) ^d			0.07			0.10			0.59	0.02	
White	1175 (95.3)	1174 (94.9)	-	1156 (93.2)	1146 (92.8)	-	1155 (93.2)	1144 (92.3)	-	-	
Asian	3 (0.2)	3 (0.2)	-	1 (0.1)	4 (0.3)	-	3 (0.2)	2 (0.2)	-	-	
Black	23 (1.9)	12 (1.0)	-	19 (1.5)	32 (2.6)	-	28 (2.2)	26 (2.1)	-	-	
Other	32 (2.6)	49 (4.0)	-	65 (5.2)	53 (4.3)	-	54 (4.4)	68 (5.5)	-	-	
Concomitant P-glyco-protein inhibitor, no. (%)	216 (17.5)	223 (18.0)	0.75	190 (15.3)	208 (16.8)	0.30	238 (19.2)	238 (19.2)	>0.999	0.09	
Previous thromboprophylaxis ≤ 96 h, no. (%)	585 (47.5)	639 (51.6)	0.04	647 (52.1)	650 (52.6)	0.80	621 (50.1)	613 (49.4)	0.75	0.20	
Acute medical condition, no. (%)			0.98			0.48			0.78	<0.001	
Heart failure	568 (46.1)	579 (46.8)	-	541 (43.6)	545 (44.1)	-	555 (44.8)	546 (44.0)	-	-	
Infection	246 (20.0)	247 (20.0)	-	359 (28.9)	387 (31.4)	-	435 (35.1)	459 (37.0)	-	-	
Respiratory failure	203 (16.5)	194 (15.7)	-	149 (12.0)	131 (10.6)	-	113 (9.1)	114 (9.2)	-	-	
Ischemic stroke	177 (14.4)	180 (14.5)	-	153 (12.3)	134 (10.9)	-	99 (8.0)	89 (7.2)	-	-	
Rheumatic disorder	39 (3.2)	36 (3.0)	-	39 (3.1)	38 (3.1)	-	38 (3.1)	32 (2.6)	-	-	

Table 1 (Continued)

Characteristic ^a	1st tertile		2nd tertile		3rd tertile		p-Value	6-way p-value
	Enoxaparin, N = 1,233	Betrixaban, N = 1,238	Enoxaparin, N = 1,241	Betrixaban, N = 1,235	Enoxaparin, N = 1,240	Betrixaban, N = 1,240		
Risk factor for venous thromboembolism, no. (%)								
Age ≥ 75 y	862 (69.9)	890 (71.9)	852 (68.7)	858 (69.5)	775 (62.5)	801 (64.6)	0.28	<0.001
History of cancer	159 (12.9)	177 (14.3)	144 (11.6)	129 (10.5)	134 (10.8)	152 (12.3)	0.26	0.04
History of deep-vein thrombosis or pulmonary embolism	98 (8.0)	97 (7.8)	74 (6.0)	110 (8.9)	118 (9.5)	98 (7.9)	0.15	0.031
History of New York Heart Association class III or IV heart failure	290 (23.5)	284 (22.9)	299 (24.1)	299 (24.2)	270 (21.8)	265 (21.4)	0.81	0.42
Concurrent acute infectious disease	197 (16.0)	173 (14.0)	204 (16.4)	211 (17.1)	210 (16.9)	212 (17.1)	0.92	0.26
Severe varicosities	267 (21.7)	256 (20.7)	209 (16.8)	241 (19.5)	207 (16.7)	200 (16.1)	0.70	<0.001
Hormone-replacement therapy	11 (0.9)	9 (0.7)	10 (0.8)	17 (1.5)	10 (0.8)	16 (1.3)	0.24	0.43
Known thrombophilia ^e	0	2 (0.2)	3 (0.2)	1 (0.1)	2 (0.2)	0	0.50	0.42

Significant results (p-value < 0.05) are expressed in bold.

Note: D-dimer tertiles: T₁: < 0.85 µg/mL; T₂: ≥ 0.85 to < 1.89 µg/mL; T₃: ≥ 1.89 µg/mL.

^aPlus-minus values are ± SD. IQR denotes interquartile range.

^bThe body mass index is the weight in kilograms divided by the square of the height in meters.

^cCreatinine clearance levels were calculated with the use of the Cockcroft-gault equation on the basis of creatinine levels on day 1. To convert the values for creatinine to micromoles per liter, multiply by 88.4.

^dRace or ethnic group was self-reported. "Other" includes subjects who were categorized as Native American, Alaska Native, Native Hawaiian or Pacific Islander, other race, or mixed.

^eDefined as inherited or acquired disorder of hemostasis including antithrombin III deficiency, protein C deficiency, and protein S deficiency.

Table 2 Multivariate analysis of D-dimer concentration and D-dimer category modeling the primary efficacy outcome through visit 3

Covariate	Univariate model		Multivariate model for D-dimer concentration ^a		Multivariate model for D-dimer category ^a	
	OR (95% CI)	p-Value	Adjusted OR (95% CI)	p-Value	Adjusted OR (95% CI)	p-Value
D-dimer concentration (per 0.25 µg/mL increase)	1.02 (1.01–1.03)	<0.001	1.02 (1.01–1.03)	<0.001		
D-dimer category ≥ 2 × ULN vs. < 2 × ULN	2.10 (1.66–2.67)	<0.001			2.03 (1.59–2.58)	<0.001
Baseline characteristics						
Age, y	1.01 (0.99–1.02)	0.146	1.02 (1.01–1.03)	0.002	1.02 (1.01–1.03)	0.002
Sex—male vs. female	1.07 (0.87–1.31)	0.521	–	–	–	–
Mean weight, kg	0.99 (0.99–1.00)	0.254	–	–	–	–
Body mass index	0.99 (0.97–1.00)	0.124	–	–	–	–
Duration of hospitalization, d	1.03 (1.02–1.04)	<0.001	1.03 (1.01–1.04)	<0.001	1.02 (1.01–1.04)	0.0002
Creatinine clearance		0.803				
< 15 mL/min ^b	–	–	–	–	–	–
15 through < 30 mL/min	1.29 (0.81–2.04)	0.281	–	–	–	–
30 through < 60 mL/min	REF	REF	–	–	–	–
60 through < 90 mL/min	0.92 (0.73–1.17)	0.499	–	–	–	–
≥ 90 mL/min	0.92 (0.69–1.23)	0.557	–	–	–	–
Missing ^b	–	–	–	–	–	–
Race		0.412				
White	REF	REF	–	–	–	–
Black	1.41 (0.73–2.70)	0.305	–	–	–	–
Asian	2.62 (0.59–11.55)	0.204	–	–	–	–
Other	0.89 (0.53–1.51)	0.668	–	–	–	–
Concomitant P-glycoprotein inhibitor—Y vs. N	0.95 (0.73–1.25)	0.731	–	–	–	–
Previous thromboprophylaxis ≤ 96 h—Y vs. N	1.34 (1.09–1.65)	0.005	1.36 (1.10–1.68)	0.005	1.33 (1.08–1.64)	0.008
Admission criteria		0.206				
Heart failure	REF	REF	–	–	–	–
Infection	1.30 (0.95–1.80)	0.106	–	–	–	–
Respiratory failure	1.23 (0.96–1.57)	0.106	–	–	–	–
Ischemic stroke	1.41 (0.80–2.48)	0.232	–	–	–	–
Rheumatic disorder	1.36 (0.98–1.88)	0.066	–	–	–	–
History of cancer—Yes vs. No	1.25 (0.93–1.67)	0.138	–	–	–	–

Table 2 (Continued)

Covariate	Univariate model		Multivariate model for D-dimer concentration ^a		Multivariate model for D-dimer category ^a	
	OR (95% CI)	p-Value	Adjusted OR (95% CI)	p-Value	Adjusted OR (95% CI)	p-Value
History of deep-vein thrombosis or pulmonary embolism—Yes vs. No	3.70 (2.87–4.78)	<0.001	3.92 (2.99–5.12)	<0.001	3.85 (2.94–5.04)	<0.001
History of New York Heart Association class III or IV heart failure—Yes vs. No	0.98 (0.77–1.26)	0.896	—	—	—	—
Concurrent acute infectious disease—Yes vs. No	1.06 (0.81–1.39)	0.665	—	—	—	—
Severe varicosities—Yes vs. No	0.98 (0.75–1.28)	0.882	—	—	—	—
Hormone replacement therapy—Yes vs. No	1.64 (0.71–3.80)	0.251	—	—	—	—
Known thrombophilia—Yes vs. No ^c	6.10 (1.23–30.29)	0.027	—	—	—	—

Significant results (p-value < 0.05) are expressed in bold.

Abbreviations: OR, odds ratio; ULN, upper limit of normal; VTE, venous thromboembolism.

^aIndependent baseline characteristics were included in a stepwise regression model if univariate p < 0.15 and were retained in the final model if adjusted p < 0.05.

^bNot enough data to produce estimate.

^cDefined as inherited or acquired disorder of hemostasis including antithrombin III deficiency, protein C deficiency, and protein S deficiency.

D-dimer and Efficacy Outcomes

For every 0.25 µg/mL unit increase in D-dimer concentration, there was a significant increase in the relative risk of a VTE event (odds ratio [OR] = 1.02; 95% confidence interval [CI]: 1.01–1.03; p < 0.001). This was true in both the betrixaban (OR = 1.02 [95% CI: 1.01–1.03]; p < 0.001) and enoxaparin (OR = 1.02 [95% CI: 1.01–1.03]; p < 0.001) treatment arms. In a multivariate analysis adjusting for other variables associated with the primary endpoint, D-dimer concentration as a continuous variable remained independently associated with VTE events (OR = 1.02 [95% CI: 1.01–1.03]; p < 0.001; ► **Table 2**). There was no significant interaction between D-dimer concentration as a continuous variable and the treatment effect (p_{int} = 0.87; ► **Table 3**).

When analyzed as a categorical variable, a positive D-dimer (≥ 2 × ULN; corresponding to ≥ 1.00 µg/mL) was associated with an increased VTE risk (6.5% [n = 294] vs. 3.2% [n = 93]; OR = 2.10 [95% CI: 1.66–2.67]; p < 0.001). After adjustment for age, duration of hospitalization, prior VTE, and previous thromboprophylaxis ≤ 96 hours, D-dimer remained an independent correlate of VTE events (OR = 2.03 [95% CI: 1.59–2.58]; p < 0.001; ► **Table 2**). Among positive D-dimer subjects (≥ 2 × ULN), extended-duration betrixaban reduced the risk of the primary efficacy outcome versus enoxaparin (5.4% [n = 124] vs. 7.6% [n = 170]; OR = 0.69 [95% CI: 0.55–0.88]; p = 0.003) through visit 3. The number of subjects needed to treat to prevent one VTE event among D-dimer positive subjects was 46 (absolute risk reduction [ARR] = 2.2%; ► **Fig. 1**). Among subjects with negative D-dimer (< 2 × ULN), there were numerically but not significantly fewer VTE events among subjects treated with betrixaban. There was no significant interaction between D-dimer category and the treatment effect (p_{int} = 0.53; ► **Table 3**).

The primary efficacy outcome was also assessed through the end of study or day 77. Among subjects with D-dimer ≥ 2 × ULN (corresponding to ≥ 1.00 µg/mL), betrixaban significantly reduced the risk for VTE compared with enoxaparin (6.7% [n = 129] vs. 9.4% [n = 182]; OR = 0.68 [95% CI: 0.54–0.86]; p = 0.001; ► **Fig. 1**). The number needed to treat to prevent one VTE event through 77 days among D-dimer-positive subjects was 38 (ARR = 2.7%). Subjects who were D-dimer negative experienced numerically but not significantly fewer VTE events. There remained no significant interaction between D-dimer category and the treatment effect through the end of the study at 77 days (p_{int} = 0.57; ► **Table 4**).

D-dimer and Safety Outcomes

Among subjects in the safety population, D-dimer concentration was not significantly associated with either major bleeding or the composite of major or CRNM bleeding in either treatment arm.

Discussion

Increasing baseline D-dimer concentration as a continuous variable was associated with an increased risk of VTE

Table 3 Interaction of D-dimer category or D-dimer concentration and treatment effect through visit 3

Outcome ^a	Enoxaparin	Betrixaban	Odds ratio (95% CI)	p-Value ^b	p-Value for interaction ^c	p-Value for interaction ^d
Primary efficacy outcome						
≥2 × ULN n/N (%)	170/2,236 (7.6)	124/2,291 (5.4)	0.69 (0.55–0.88)	0.003	0.53	0.87
<2 × ULN n/N (%)	52/1,480 (3.5)	41/1,427 (2.9)	0.82 (0.54–1.24)	0.33		

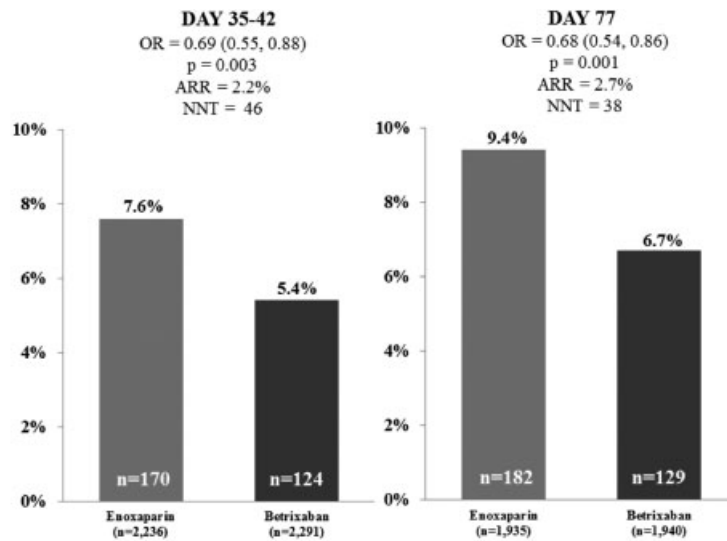
Significant results (p-value < 0.05) are expressed in bold.

^aThe primary efficacy outcome is a composite of asymptomatic proximal DVT, symptomatic proximal or distal DVT, symptomatic nonfatal PE, or death from VTE through visit 3 or day 42.

^bThe associations of treatment and efficacy outcomes were found using logistic regression and stratified by dosing criteria (severe renal dysfunction, concomitant P-glycoprotein inhibitor, or neither).

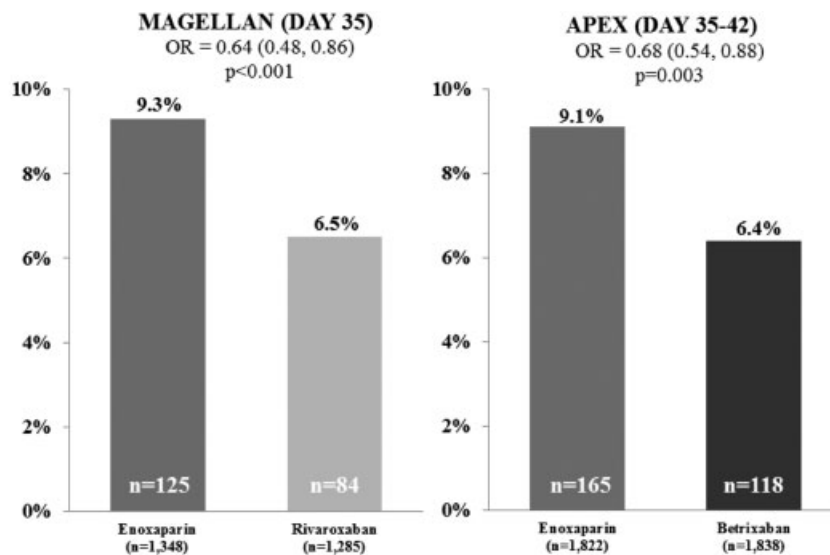
^cInteraction for D-dimer category.

^dInteraction for D-dimer concentration.



The primary efficacy outcome is a composite of asymptomatic proximal DVT, symptomatic proximal or distal DVT, symptomatic nonfatal PE, or VTE-related death. The associations of treatment and efficacy outcomes were found using logistic regression and stratified by dosing criteria (severe renal dysfunction, concomitant P-glycoprotein inhibitor, or neither). This analysis was completed in the miTT population using central d-dimer (local d-dimer if central is missing).

Fig. 1 Primary efficacy outcome for D-dimer-positive patients through visit 3 and end of study.



This analysis was completed in the primary efficacy outcome population (PEOP) using central d-dimer.

Fig. 2 Primary efficacy outcome for D-dimer-positive patients through day 35 in APEX and MAGELLAN.

Table 4 Interaction for D-dimer category or D-dimer concentration and treatment effect through end of study

Outcome ^a	Enoxaparin	Betrixaban	Odds ratio (95% CI)	p-Value ^b	p-Value for interaction ^c	p-Value for interaction ^d
Primary efficacy outcome						
≥2 × ULN n/N (%)	182/1,935 (9.4)	129/1,940 (6.7)	0.68 (0.54–0.86)	0.001	0.57	0.76
<2 × ULN n/N (%)	54/1,319 (4.1)	41/1,260 (3.3)	0.79 (0.52–1.19)	0.26		

^aThe primary efficacy outcome is a composite of asymptomatic proximal DVT, symptomatic proximal or distal DVT, symptomatic nonfatal PE, or death from VTE through visit 3, but carried through end of study (day 77) for this analysis.

^bThe associations of treatment and efficacy outcomes were found using logistic regression and stratified by dosing criteria (severe renal dysfunction, concomitant P-glycoprotein inhibitor, or neither).

^cInteraction for D-dimer status.

^dInteraction for D-dimer concentration.

(asymptomatic DVT, symptomatic DVT, nonfatal PE, or VTE-related death). As a categorical variable, a positive baseline D-dimer ($\geq 2 \times \text{ULN}$; corresponding to $\geq 1.00 \mu\text{g/mL}$) was also associated with an increased risk of VTE in both univariate and multivariate analyses. There was no modulation of the treatment effect of betrixaban, however, as a function of D-dimer concentration. While the interaction term was negative, the event rates among D-dimer-positive patients were greater than D-dimer-negative patients, and the absolute risk reduction was numerically greater among D-dimer-positive patients. One would need to treat 46 D-dimer-positive patients to prevent one event at 35 to 42 days and 38 D-dimer-positive patients to prevent one event through the end of the study at 77 days.

These results validate the hypothesis-generating observations in prior studies.^{13,14} In the MAGELLAN trial, the incidence of VTE was 3.5 times greater for subjects with a central D-dimer $\geq 2 \times \text{ULN}$ compared with those with a central D-dimer $< 2 \times \text{ULN}$.¹⁴ As central D-dimer increased in MAGELLAN, the absolute benefit of rivaroxaban over enoxaparin increased.¹⁵ Among D-dimer-positive patients, there was a nearly identical reduction in VTE comparing active treatment to enoxaparin through days 35 to 42 or day 35 for both the APEX and MAGELLAN trials (► Fig. 2). Thus, the MAGELLAN trial could be viewed as hypothesis-generating and APEX as validating the increased absolute VTE risk reduction observed in D-dimer-positive patients. While the efficacy results were quite similar between MAGELLAN and APEX, with respect to safety in contrast, there was no excess major bleeding associated with extended-duration betrixaban, whereas there was excess major bleeding with extended-duration rivaroxaban.

To optimize VTE risk stratification among acute medically ill patients, D-dimer measurement can also be used in conjunction with risk assessment models. For instance, the IMPROVEDD VTE risk score (incorporating D-dimer into the IMPROVE score) has been demonstrated to improve the discrimination and reclassification of the IMPROVE model.¹⁶ Adding D-dimer measurement to the IMPROVE score has also been implemented in the enrollment criteria of an ongoing trial for preventing hospital-associated VTE (Medically Ill Patient Assessment of Rivaroxaban Versus Placebo in Reducing Post-Discharge Venous Thrombo-Embolic Risk [MARINER]).¹⁷

Limitations

The cutoff for D-dimer was determined retrospectively, although the cutoff of $\geq 2 \times \text{ULN}$ has been studied previously. Future prospective studies are required to validate the findings from this post hoc analysis. It is unknown if a D-dimer greater than $2 \times \text{ULN}$ reflects the presence of clot at baseline, since no ultrasound was performed at baseline. The results obtained using central D-dimer resulting from a single quantitative test format may differ from the results obtained using local D-dimers, because different assays with distinct sensitivities and specificities were used at different sites.¹⁸

Only a single D-dimer measurement was available at the time of enrollment, and no subsequent D-dimer measurement was available to determine if betrixaban reduced D-dimer concentrations greater than enoxaparin over time. Likewise, the association of temporal changes in D-dimer with clinical outcomes could not be evaluated. Whether extending VTE prophylaxis at discharge or at the end of parenteral therapy based on D-dimer concentration at that time would improve VTE risk is not known.

Conclusion

Elevated baseline D-dimer is associated with a greater risk of VTE events, both as a continuous variable and as a discrete variable. Extended-duration betrixaban was superior to standard-duration enoxaparin, regardless of D-dimer concentration at baseline.

Conflict of Interest

None declared.

Clinical Trial Registration

URL: <http://www.clinicaltrials.gov>. ClinicalTrials.gov identifier: NCT01583218.

References

- Heit JA, Silverstein MD, Mohr DN, Petterson TM, O'Fallon WM, Melton LJ III. Risk factors for deep vein thrombosis and pulmonary embolism: a population-based case-control study. *Arch Intern Med* 2000;160(06):809–815

- 2 Douma RA, le Gal G, Söhne M, et al. Potential of an age adjusted D-dimer cut-off value to improve the exclusion of pulmonary embolism in older patients: a retrospective analysis of three large cohorts. *BMJ* 2010;340:c1475
- 3 Neuhaus J, Jacobs DR Jr, Baker JV, et al. Markers of inflammation, coagulation, and renal function are elevated in adults with HIV infection. *J Infect Dis* 2010;201(12):1788–1795
- 4 Adam SS, Key NS, Greenberg CS. D-dimer antigen: current concepts and future prospects. *Blood* 2009;113(13):2878–2887
- 5 Wells PS, Anderson DR, Rodger M, et al. Excluding pulmonary embolism at the bedside without diagnostic imaging: management of patients with suspected pulmonary embolism presenting to the emergency department by using a simple clinical model and D-dimer. *Ann Intern Med* 2001;135(02):98–107
- 6 Wells PS, Owen C, Doucette S, Fergusson D, Tran H. Does this patient have deep vein thrombosis? *JAMA* 2006;295(02):199–207
- 7 Halaby R, Popma CJ, Cohen A, et al. D-Dimer elevation and adverse outcomes. *J Thromb Thrombolysis* 2015;39(01):55–59
- 8 Becattini C, Lignani A, Masotti L, Forte MB, Agnelli G. D-dimer for risk stratification in patients with acute pulmonary embolism. *J Thromb Thrombolysis* 2012;33(01):48–57
- 9 Knowlson L, Bacchu S, Paneesha S, McManus A, Randall K, Rose P. Elevated D-dimers are also a marker of underlying malignancy and increased mortality in the absence of venous thromboembolism. *J Clin Pathol* 2010;63(09):818–822
- 10 Wen D, Du X, Dong JZ, Zhou XL, Ma CS. Value of D-dimer and C reactive protein in predicting inhospital death in acute aortic dissection. *Heart* 2013;99(16):1192–1197
- 11 Cohen AT, Harrington R, Goldhaber SZ, et al. The design and rationale for the Acute Medically Ill Venous Thromboembolism Prevention with Extended Duration Betrixaban (APEX) study. *Am Heart J* 2014;167(03):335–341
- 12 Cohen AT, Harrington RA, Goldhaber SZ, et al; APEX Investigators. Extended thromboprophylaxis with betrixaban in acutely ill medical patients. *N Engl J Med* 2016;375(06):534–544
- 13 Desjardins L, Bara L, Boutitie F, et al. Correlation of plasma coagulation parameters with thromboprophylaxis, patient characteristics, and outcome in the MEDENOX study. *Arch Pathol Lab Med* 2004;128(05):519–526
- 14 Weber MA, Schiffrin EL, White WB, et al. Clinical practice guidelines for the management of hypertension in the community a statement by the American Society of Hypertension and the International Society of Hypertension. *J Hypertens* 2014;32(01):3–15
- 15 Cohen AT, Spiro TE, Büller HR, et al; MAGELLAN Investigators. Rivaroxaban for thromboprophylaxis in acutely ill medical patients. *N Engl J Med* 2013;368(06):513–523
- 16 Gibson CM, Spyropoulos AC, Cohen AT, et al. The IMPROVEDD VTE risk score: incorporation of D-Dimer into the IMPROVE score to improve venous thromboembolism risk stratification. *TH Open* 2017;1(01):e56–e65
- 17 Raskob GE, Spyropoulos AC, Zrubek J, et al. The MARINER trial of rivaroxaban after hospital discharge for medical patients at high risk of VTE. Design, rationale, and clinical implications. *Thromb Haemost* 2016;115(06):1240–1248
- 18 Boeer K, Siegmund R, Schmidt D, Deufel T, Kiehntopf M. Comparison of six D-dimer assays for the detection of clinically suspected deep venous thrombosis of the lower extremities. *Blood Coagul Fibrinolysis* 2009;20(02):141–145