

Endoscopic Endonasal Approach for Resection of a Pediatric Craniopharyngioma: Operative Video and Technical Nuances

James K. Liu^{1,2,3} Jean Anderson Eloy^{1,2,3,4}

¹Department of Neurological Surgery, Neurological Institute of New Jersey, Rutgers University, New Jersey Medical School, Newark, New Jersey, United States

²Department of Otolaryngology-Head and Neck Surgery, Neurological Institute of New Jersey, Rutgers University, New Jersey Medical School, Newark, New Jersey, United States

³Center for Skull Base and Pituitary Surgery, Neurological Institute of New Jersey, Rutgers University, New Jersey Medical School, Newark, New Jersey, United States

⁴Department of Ophthalmology and Visual Science, Neurological Institute of New Jersey, Rutgers University, New Jersey Medical School, Newark, New Jersey, United States

Address for correspondence James K. Liu, MD, Department of Neurological Surgery, Rutgers University, New Jersey Medical School, 90 Bergen Street, Suite 8100, Newark, New Jersey 07103, United States (e-mail: james.liu.md@rutgers.edu).

J Neurol Surg B 2018;79(suppl S3):S245–S246.

Abstract

We present a pediatric case of a retrochiasmatic craniopharyngioma in the suprasellar region with third ventricular extension that was resected through a purely endoscopic endonasal approach (EEA) via the transplanum transtuberulum corridor. The patient is a 12-year-old boy who presented with progressive visual loss and panhypopituitarism. The EEA allows direct visualization of the undersurface of the optic chiasm and hypothalamus so that safe and meticulous tumor dissection can be performed to preserve these critical neurovascular structures. This video atlas demonstrates the operative technique and surgical nuances of the endoscopic skull base approach, microdissection of the tumor from the critical neurovascular structures, and multi-layered reconstruction of the skull base defect with a nasoseptal flap. A gross total resection was achieved, and the patient was neurologically intact with improved visual acuity and visual fields. In summary, the EEA via the transplanum transtuberulum corridor is an important strategy in the armamentarium for surgical management of pediatric craniopharyngiomas.

The link to the video can be found at: https://youtu.be/bmgO_PMRHPk.

Keywords

- ▶ endoscopic endonasal approach
- ▶ craniopharyngioma
- ▶ pediatric skull base surgery
- ▶ suprasellar tumor



www.thieme.com/skullbasevideos

www.thieme.com/jnlsvideos

received
December 24, 2017
accepted
January 2, 2018
published online
February 26, 2018

DOI <https://doi.org/10.1055/s-0038-1626707>.
ISSN 2193-6331.

© 2018 Georg Thieme Verlag KG
Stuttgart · New York

License terms



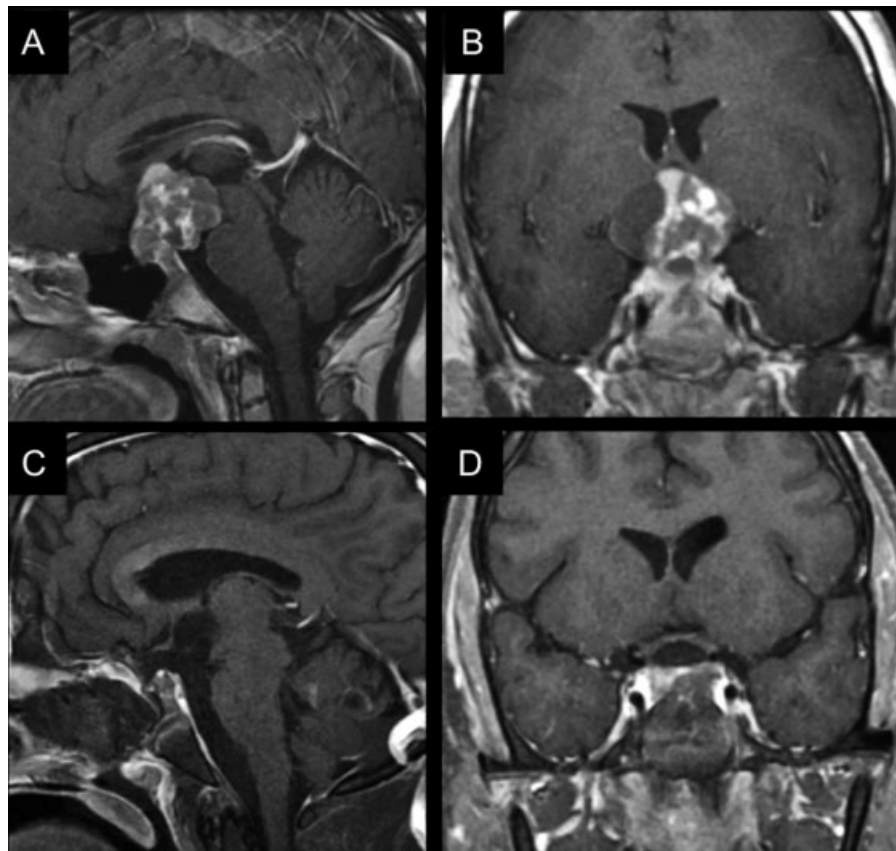


Fig. 1 Preoperative (A: sagittal, B: coronal) and postoperative (C: sagittal, D: coronal) postgadolinium T1-weighted MRI of a retrochiasmatic craniopharyngioma removed via an endoscopic endonasal approach. Gross total resection was achieved. MRI, magnetic resonance imaging.

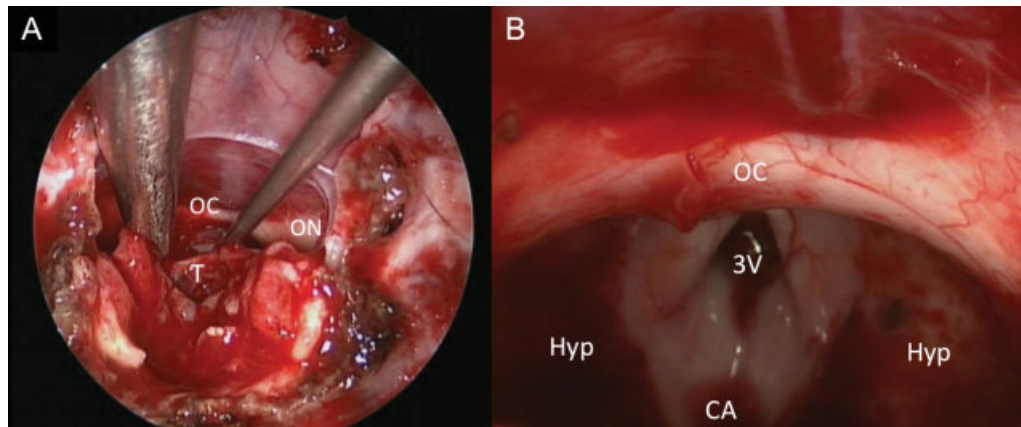


Fig. 2 (A) Intraoperative endoscopic view of the tumor (T) being dissected from the undersurface of the optic chiasm (OC) and left optic nerve (ON). (B) View of the resection bed after total removal of the tumor. 3V, third ventricle; CA, cerebral aqueduct; Hyp, hypothalamus.