

# Genotype-Phenotype Association and Impact on Outcomes following Guided De-Escalation of Anti-Platelet Treatment in Acute Coronary Syndrome Patients: The TROPICAL-ACS Genotyping Substudy

Lisa Gross<sup>1</sup> Dietmar Trenk<sup>2</sup> Claudius Jacobshagen<sup>3</sup> Anne Krieg<sup>1</sup> Meinrad Gawaz<sup>4</sup>  
Steffen Massberg<sup>1,5</sup> Monika Baylacher<sup>1</sup> Daniel Aradi<sup>6</sup> Fabian Stimpfle<sup>4</sup> Julia Hromek<sup>2</sup>  
Anja Vogelgesang<sup>3</sup> Martin Hadamitzky<sup>7</sup> Dirk Sibbing<sup>1,5,\*</sup> Tobias Geisler<sup>4,\*</sup>

<sup>1</sup> Department of Cardiology, LMU München, Munich, Germany

<sup>2</sup> Department of Cardiology and Angiology II, University Heart Centre Freiburg, University of Freiburg, Bad Krozingen, Germany

<sup>3</sup> Department of Cardiology and Pneumology, Heart Centre, Georg-August-University Göttingen, Göttingen, Germany

<sup>4</sup> Department of Cardiology and Cardiovascular Disease, University Hospital Tübingen, University of Tübingen, Tübingen, Germany

<sup>5</sup> DZHK (German Centre for Cardiovascular Research), Partner Site Munich Heart Alliance, Munich, Germany

<sup>6</sup> Heart Centre Balatonfüred and Heart and Vascular Centre, Semmelweis University, Budapest, Hungary

<sup>7</sup> Department of Radiology, Deutsches Herzzentrum München, Technical University of Munich, München, Germany

Address for correspondence Tobias Geisler, MD, Department of Cardiology and Cardiovascular Disease, University Hospital Tübingen, Otfried-Müller-Strasse 10, 72076 Tübingen, Germany (e-mail: Tobias.Geisler@med.uni-tuebingen.de).

Thromb Haemost 2018;118:1656–1667.

## Abstract

### Keywords

- ▶ acute coronary syndrome
- ▶ genotyping
- ▶ platelets
- ▶ thrombosis
- ▶ bleeding
- ▶ cytochrome P450 (CYP) 2C19

**Background** Phenotype-guided de-escalation (PGDE) of P2Y<sub>12</sub>-inhibitor treatment with an early switch from prasugrel to clopidogrel was identified as an effective alternative treatment strategy in acute coronary syndrome (ACS) patients undergoing percutaneous coronary intervention (PCI). The Testing Responsiveness to Platelet Inhibition on Chronic Antiplatelet Treatment for Acute Coronary Syndromes (TROPICAL-ACS) Genotyping Substudy aimed to investigate whether *CYP2C19* genotypes correlate with on-treatment platelet reactivity (PR) in ACS patients treated with clopidogrel or prasugrel and thus might be useful for guidance of early de-escalation of anti-platelet treatment.

**Methods and Results** A total of 603 ACS consecutive patients were enrolled in four centres (23.1% of the overall TROPICAL-ACS population). Rapid genotyping (Spartan RX) for *CYP2C19*\*2, \*3 and \*17 alleles was performed. Associations between PR and the primary and secondary endpoints of the TROPICAL-ACS trial and *CYP2C19*\*2 and *CYP2C19*\*17 carrier status were evaluated.

\* Dirk Sibbing and Tobias Geisler are senior authors who contributed equally to the work.

For the PGDE group, the on-clopidogrel PR significantly differed across *CYP2C19*\*2 ( $p < 0.001$ ) and *CYP2C19*\*17 genotypes ( $p = 0.05$ ). Control group patients were not related ( $p = 0.90$ ,  $p = 0.74$ ) to on-prasugrel PR. For high PR versus non-high PR patients within the PGDE group, significant differences were observed for the rate of *CYP2C19*\*2 allele carriers (43% vs. 28%,  $p = 0.007$ ).

**Conclusion** *CYP2C19*\*2 and *CYP2C19*\*17 carrier status correlates with PR in ACS patients treated with clopidogrel and thus might be useful for pre-selecting patients who will and who may not be suitable for PGDE of anti-platelet treatment. Regarding phenotype-guided treatment, we did not observe added benefit of genotyping to predict ischaemic and bleeding risk in patients who underwent a PGDE approach.

**Clinical Trial Registration** URL: <https://www.clinicaltrials.gov>. Unique Identifier: NCT: 01959451.

## Introduction

Current guidelines<sup>1-3</sup> recommend P2Y<sub>12</sub> receptor inhibition with prasugrel or ticagrelor for 1 year in acute coronary syndrome (ACS) patients after percutaneous coronary intervention (PCI). In reality, however, switching potent anti-platelets for clopidogrel within 1 year after PCI is common clinical practice due to various reasons including clinical and socio-economic<sup>4</sup> factors.<sup>5-7</sup> Of note, results on outcomes of ACS patients following non-guided, uniform de-escalation of P2Y<sub>12</sub> inhibitor therapy are conflicting<sup>5,8</sup> and the substantial variability in pharmacodynamic action of clopidogrel, which translates into variation in clopidogrel effectiveness after PCI, has given rise to concerns and debate.<sup>9-11</sup> Various clinical factors contribute to this variability, and it is partly explained by genetic polymorphisms encoding *CYP2C19*, the hepatic enzyme involved in conversion of clopidogrel to its active metabolite.<sup>12</sup> *CYP2C19*\*2 and \*3, both single-nucleotide polymorphisms resulting in complete loss of enzyme activity, are key determinants for reduced clopidogrel conversion (loss-of-function allele, LoF) and subsequent ineffective platelet inhibition.<sup>11,13-15</sup> The \*2 allele is by far the most common of the two, with an allele frequency of 15% in whites and blacks and 30 to 35% in Asians.<sup>16,17</sup> On the other hand, the *CYP2C19*\*17 allelic variant leads to increased catalytic activity, most likely due to a higher transcription rate of the gene, and more pronounced platelet inhibition (gain-of-function allele, GoF).<sup>18-21</sup> In line, studies have consistently shown an elevated risk for ischaemic events in PCI patients with the LoF *CYP2C19*\*2 genotype<sup>10,13-15,19,20,22-30</sup> and an increased bleeding risk for *CYP2C19*\*17 allele carriers treated with clopidogrel.<sup>18-20,31</sup> Thus, implementing rapid genotyping as an additional component for clinical decision-making seems attractive and, with modern assays now broadly available, recently became feasible in real-world clinical practice.<sup>32,33</sup>

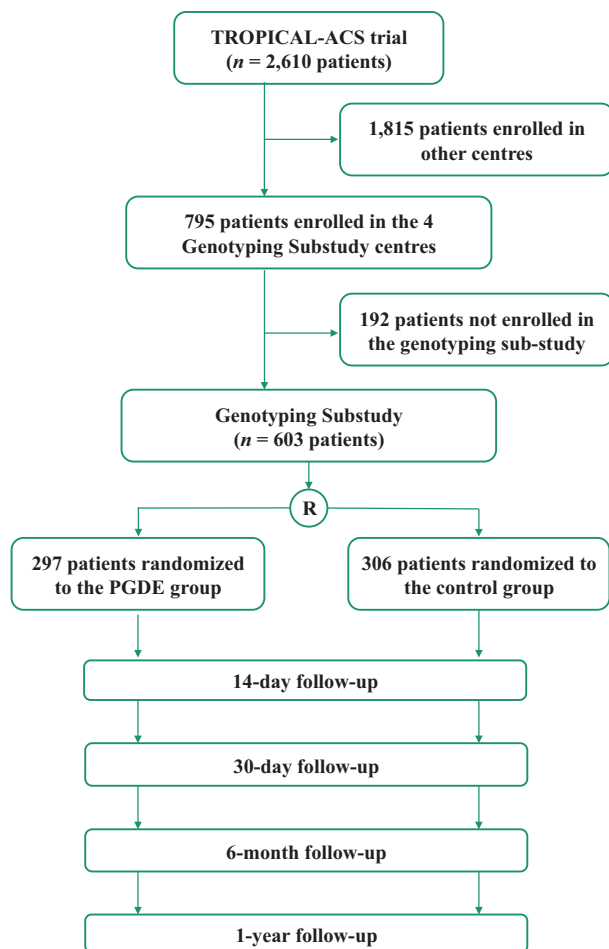
In the randomized multi-centre Testing Responsiveness to Platelet Inhibition on Chronic Antiplatelet Treatment for Acute Coronary Syndromes (TROPICAL-ACS) trial,<sup>34,35</sup> we recently established a regimen of anti-platelet therapy with an early switch from prasugrel to clopidogrel (de-escalation) guided by platelet function testing (PFT) as a safe and effective treatment strategy in invasively managed

ACS patients. As both *CYP2C19* genotype and on-treatment platelet reactivity (PR) (phenotype) impact on clinical outcomes,<sup>10,11,18,19,36</sup> the TROPICAL-ACS Genotyping Substudy aimed to investigate whether *CYP2C19* genotypes correlate with phenotypes in invasively managed ACS patients treated with clopidogrel or prasugrel and thus might be useful and complementary for pre-selecting patients who may be suitable and who may potentially benefit from guided early de-escalation of anti-platelet treatment.

## Methods

### Study Design and Patients

All patients recruited for the genotyping sub-study were part of the TROPICAL-ACS trial.<sup>35</sup> TROPICAL-ACS (ClinicalTrials.gov identifier: NCT01959451) was an investigator-initiated, randomized, parallel-group, open-label, assessor-blinded, multi-centre trial in ACS patients undergoing PCI conducted at 33 sites in Europe.<sup>34,35</sup> It had an academic sponsor (Klinikum der Universität München) and was overseen by an independent data safety monitoring board. For the present multi-centre genotyping sub-study, genetic testing for *CYP2C19*\*2 and *CYP2C19*\*3 LoF and *CYP2C19*\*17 GoF alleles was performed (see below). Inclusion and exclusion criteria were identical to those of the primary trial.<sup>35</sup> In brief, biomarker-positive ACS patients aged  $\geq 18$  and  $\leq 80$  years after successful PCI were enrolled in the trial. Details on inclusion and exclusion criteria have been published previously.<sup>35</sup> The genotyping sub-study, which was pre-specified in the study protocol, included a cohort of 603 consecutive patients from 4 German TROPICAL-ACS study sites. These were the Department of Cardiology, LMU Munich (Munich, Germany), the Department of Cardiology and Angiology II, University Heart Centre Freiburg, Bad Krozingen (Bad Krozingen, Germany), the Department of Cardiology and Pneumology, Heart Centre, Georg-August-University Göttingen (Göttingen, Germany) and the University Hospital Tübingen, Department of Cardiology and Cardiovascular Disease (Tübingen, Germany). As for all patients of the main trial, study enrolment and randomization of patients for this sub-study took place in the days after the index PCI. ▶ **Fig. 1** shows a flowchart of all patients enrolled in these



**Fig. 1** Study flowchart. Study flow of the Testing Responsiveness to Platelet Inhibition on Chronic Antiplatelet Treatment for Acute Coronary Syndromes (TROPICAL-ACS) genotyping sub-study. PGDE, phenotype guided de-escalation.

four centres (with and without participation in the genotyping sub-study). Patients provided written informed consent for participation in this sub-study in addition to written informed consent for the primary trial. It was conducted in accordance with the principles of the Declaration of Helsinki and approved by the institutional ethics committee of each participating site.

### Randomization and Study Groups

In TROPICAL-ACS, ACS patients were randomized prior to discharge in a 1:1 fashion to the two study groups of either uniform treatment with prasugrel according to guideline recommendations<sup>1-3</sup> (control group) or early dual antiplatelet therapy (DAPT) de-escalation from prasugrel to clopidogrel guided by PFT (phenotype-guided de-escalation [PGDE] group). Patients in the PGDE group received a post-discharge treatment consisting of 1-week prasugrel (5/10 mg/day) followed by 1-week clopidogrel (75 mg/day) and a platelet function measurement on clopidogrel 2 weeks after discharge. Based on the testing results in the PGDE group, patients were either switched back to prasugrel, when a status of high on-treatment PR (HPR) was detected, whereas patients with sufficient platelet inhibition (no HPR) contin-

ued with clopidogrel for the study period of 12 months. For observational purposes and to achieve equal conditions in both study groups, the control group patients also underwent PFT 2 weeks post-discharge, with results not impacting on the further course of treatment. Study drugs for the first 14 days post-discharge were packed and provided by the pharmacy department of the Klinikum der Universität München to guarantee correct intake of medication in both study groups. Further details on study design and drug treatment were published previously.<sup>34,35</sup>

### Procedures and Follow-up

Before discharge, or with the outpatient visit on day 14 post-discharge, patients underwent rapid genotyping for *CYP2C19*\*2, \*3 and \*17 with the Spartan RX assay (Spartan Bioscience, Inc., Ontario, Canada). The Spartan RX sample-to-result deoxyribonucleic acid testing system is a polymerase chain reaction-based bedside device using a buccal swab.<sup>37</sup> The system was previously tested against bi-directional sequencing showing 100% agreement. Follow-up was identical to the primary trial. Two weeks after discharge, all patients had an outpatient visit that included blood sampling for PFT with the Multiplate analyser (Roche Diagnostics, Rotkreuz, Switzerland) under steady-state conditions. Details of this method have been published previously.<sup>36,38</sup> A status of HPR was defined based on the consensus documents of the Working Group on HPR as an adenosine diphosphate (ADP) test aggregation value of 46 units or higher.<sup>36,38</sup> Further on, patients were contacted by phone call at 30 days, 6 months, and 12 months after randomization. For study endpoints and adverse events, all source data were collected for independent event adjudication.

### Study Endpoints

The pre-specified study endpoint of the genotyping sub-study was the correlation between *CYP2C19* genotypes and phenotyping data (on-treatment PR) on clopidogrel and prasugrel treatment. Further pre-specified endpoints included the primary and secondary endpoints of the TROPICAL-ACS trial. Definitions of endpoints are identical to those used in the TROPICAL-ACS trial and have been summarized elsewhere.<sup>34,35</sup>

The TROPICAL-ACS primary endpoint was a combined ischaemic and bleeding endpoint (net clinical benefit)<sup>35</sup> consisting of death from cardiovascular causes, myocardial infarction,<sup>39</sup> stroke, and bleeding grade 2 or higher defined according to the Bleeding Academic Research Consortium (BARC) criteria<sup>40</sup> at 12 months after randomization. The TROPICAL-ACS key secondary endpoint was defined as BARC class 2 or higher bleeding events at 12 months. An independent and assessor-blinded event adjudication committee adjudicated all clinical events.

### Statistical Analysis

Variables are presented as mean  $\pm$  standard deviation or numbers (percentages). Binary and other categorical variables were compared using the chi-square test. For continuous data, two-sided unpaired Wilcoxon test or Student's *t*-test were used as appropriate. Normally distributed

continuous data were compared between groups with one-way analysis of variance. Correlation between the primary and secondary endpoints of the TROPICAL-ACS trial and *CYP2C19*\*2, *CYP2C19*\*3 and *CYP2C19*\*17 carrier status was evaluated by univariate Cox proportional models. In addition, we tested for associations between *CYP2C19* alleles and on-treatment PR by inter-group comparisons. A multivariable linear regression model was used to test for an independent association of *CYP2C19*\*2 allele carriage with ADP-induced platelet aggregation measurements (dependent variable). Independent variables were *CYP2C19*\*2 carrier status and age, gender, body mass index, diabetes, and smoking. Further details on randomization procedures and statistical assumptions were reported previously.<sup>34,35</sup> Deviations between observed and expected allele and genotype frequencies for *CYP2C19*\*2 and *CYP2C19*\*17 were determined by means of Hardy–Weinberg equilibrium calculations.<sup>41</sup> Data were analysed with R version 3.3.0. D.S. and T.G. had full access to the data and take full responsibility for the data presented here.

## Results

### Study Population

Between December 2013 and May 2016, 2,610 eligible ACS patients with successful PCI were enrolled in the TROPICAL-ACS trial at 33 European sites.<sup>34,35</sup> A total of 1,306 individuals were randomized to the control group and 1,304 to the guided de-escalation group. Of this intention-to-treat population, 603 consecutive patients from four study centres were enrolled to the genotyping sub-study between December 2013 and May 2016. Sub-study enrolment took place simultaneously to inclusion to the primary trial. The genotyping sub-study cohort consisted of 306 (51%) control group and 297 (49%) PGDE group individuals. Of the 297 PGDE patients, 90 individuals (30%) were switched back to prasugrel at 14 days' follow-up due to HPR on clopidogrel, as mandated by the study protocol.

►Table 1 presents the baseline characteristics of the study population stratified by treatment groups. They did not differ between the PGDE versus control group. Angiographic and procedural characteristics are summarized in ►Table 2. They were equally distributed across study groups. Note that 169 patients (28%) were heterozygous and 17 patients (3%) homozygous carriers of the LoF *CYP2C19*\*2 mutation. The GoF *CYP2C19*\*17 allele was present in 213 (35%) heterozygous and 19 (3%) homozygous carriers. As only 3 *CYP2C19*\*3 allele carriers were present in the study cohort, these data were not included to further analyses. All genotype frequencies of *CYP2C19*\*2 and \*17 polymorphism were in Hardy–Weinberg equilibrium.

### Phenotype–Genotype Association

For the PGDE group, on-clopidogrel PR significantly differed across LoF *CYP2C19*\*2 genotypes ( $p < 0.001$ ) with the highest ADP-induced platelet aggregation values observed in homozygous \*2 allele carriers and the lowest values found in wild-type individuals (mean  $PR_{wt/wt} = 37.3$  U, mean  $PR_{wt/2} =$

44.6 U, mean  $PR_{2/2} = 58.1$  U, ►Fig. 2B). In the PGDE group, PR values also differed across GoF *CYP2C19*\*17 genotypes ( $p = 0.05$ ) with most effective platelet inhibition found for homozygous \*17 allele carriers (mean  $PR_{wt/wt} = 42.0$  U, mean  $PR_{wt/17} = 37.7$  U, mean  $PR_{17/17} = 31.4$  U, ►Fig. 3B). For control group patients, however, no association between on-prasugrel PR and \*2 ( $p = 0.90$ ) or \*17 ( $p = 0.74$ ) genotypes was found (►Figs. 2A and 3A). Ninety PGDE group patients (30%) and 28 control group individuals (9%) displayed insufficient platelet inhibition on anti-platelet medication defined as HPR.<sup>36,38</sup> Of note, significant differences were observed for the rate of *CYP2C19*\*2 allele carriers for HPR versus non-HPR patients within the PGDE group, with a higher proportion of *CYP2C19*\*2 carriers among patients with insufficient platelet inhibition (43% vs. 28%,  $p = 0.007$ ). Interestingly, 46% of patients with at least one *CYP2C19*\*2 allele and no *CYP2C19*\*17 allele had to be switched back to prasugrel due to HPR, compared with 27% of patients without altered alleles ( $p = 0.027$ ), see ►Fig. 4. For patients with at least one GoF allele, the switching rates were similar to the group without altered genes, see ►Fig. 4A. Of note, 67% of the individuals carrying two LoF alleles had to be switched back to prasugrel due to HPR (positive predictive value 0.67, negative predictive value 0.71), compared with 38% of subjects with only one LoF allele present, see ►Fig. 4B. Finally, of the patients carrying two GoF alleles, no one at all had to be switched back to prasugrel (positive predictive value for clopidogrel maintenance therapy 1.00, negative predictive value 0.32), see ►Fig. 4B. In multivariate analysis, *CYP2C19*\*2 carrier status was a strong and independent predictor of PR ( $p = 0.002$ ).

### Clinical Outcome

A total of 53 primary endpoint events (net clinical benefit; death, myocardial infarction, stroke, bleeding  $BARC \geq 2$ ) were reported during the 12 months' follow-up period, see ►Table 3. In the PGDE group, where PFT (phenotyping) was used for tailored treatment, significant associations were neither observed between LoF *CYP2C19*\*2 allele carriage and combined ischaemic events ( $p = 0.13$ ), nor between GoF *CYP2C19*\*17 allele carriage and  $BARC$  type  $\geq 2$  bleeding events ( $p = 0.83$ ). Likewise, no significant associations were found for *CYP2C19*\*2 genotypes with combined ischaemic events ( $p = 0.37$ ) or *CYP2C19*\*17 allele carriage with  $BARC$  type  $\geq 2$  bleeding events ( $p = 0.87$ ) for the control group patients with uniform prasugrel therapy.

## Discussion

The present TROPICAL-ACS Genotyping Substudy is the first dedicated prospective analysis on the value of *CYP2C19* genotyping for pre-selecting ACS patients for guided early de-escalation of anti-platelet treatment. Investigating complementary and useful methods and concepts in this regard seems mandatory, considering that early switching between oral P2Y<sub>12</sub> inhibitors is common clinical practice worldwide,<sup>4,5,42,43</sup> and clopidogrel remains widely prescribed in ACS patients.<sup>44</sup>

**Table 1** Baseline characteristics

	Control group (n = 306)	Phenotype guided de-escalation group (n = 297)	p-Value
Age (y)	59.8 (10.2)	59.4 (10.2)	0.63
Women	57 (18.6)	55 (18.5)	1.00
Body mass index (kg/m <sup>2</sup> )	27.5 (4.1)	27.8 (4.4)	0.27
White	301 (98.4)	294 (99.0)	0.80
Previous percutaneous coronary intervention	43 (14.1)	34 (11.4)	0.39
Previous coronary artery bypass surgery	5 (1.6)	11 (3.7)	0.13
Previous myocardial infarction	31 (10.1)	29 (9.8)	0.89
History of coronary artery disease	43 (14.1)	38 (12.8)	0.72
Renal insufficiency	10 (3.3)	12 (4.0)	0.67
Diabetes mellitus	47 (15.4)	50 (16.8)	0.66
Current smoker	125 (40.8)	138 (46.5)	0.38
Arterial hypertension	171 (55.9)	159 (53.5)	0.85
Hyperlipidaemia	134 (43.8)	115 (38.7)	1.00
Family history of coronary artery disease	85 (27.8)	76 (25.6)	0.58
Haemoglobin (g/dL)	15.1 (11.0)	15.2 (9.9)	0.91
Creatinine (mg/dL)	1.0 (0.2)	1.0 (0.7)	0.27
Medication at home			
Aspirin	72 (23.5)	62 (20.9)	0.49
ADP receptor antagonist	10 (3.3)	11 (3.7)	0.83
Beta blocker	76 (24.8)	73 (24.6)	1.00
ACE inhibitor	62 (20.3)	67 (22.6)	0.55
Angiotensin <sub>1</sub> receptor antagonist	45 (14.7)	37 (12.5)	0.48
Calcium antagonist	19 (6.2)	28 (9.4)	0.17
Proton pump inhibitor	30 (9.8)	30 (9.8)	0.89
Statin treatment	60 (19.6)	61 (20.5)	0.84

Abbreviations: ACE, angiotensin-converting enzyme; ADP, adenosine diphosphate; SD, standard deviation.

Note: Data are n (%), or mean (SD).

One key finding of our study is that LoF *CYP2C19*\*2 and GoF *CYP2C19*\*17 allele carrier status in rapid genotyping correlates with PR in ACS patients treated with clopidogrel. Thus, *CYP2C19* genotyping seems to be a valuable method for pre-selecting ACS patients who will and who may not be suitable for guided early de-escalation of anti-platelet therapy. Of note, we found evidence for a gene-dose effect with the highest ADP-induced platelet aggregation values observed in homozygous \*2 allele carriers and most effective platelet inhibition with lowest PR seen for homozygous *CYP2C19*\*17 carriers. Moreover, in multivariate analysis, *CYP2C19*\*2 carrier status was a strong and independent predictor of PR, thereby emphasizing its role as a genetic marker that could be potentially useful for guidance of treatment (including de-escalation regimens). Importantly, our protocol mandated to adjust anti-platelet therapy based on PFT results in the PGDE group. Thus, we did not observe added benefit of genotyping for predicting ischaemic and bleeding risk in patients who in

any case followed a PGDE treatment course, with respective therapy changes. Indeed, genetic testing, especially when performed as the 1st line strategy for guidance of P2Y<sub>12</sub> inhibitor treatment, may represent an alternative approach to PFT to guide DAPT de-escalation. On-going clinical trials like Cost effectiveness of *CYP2C19* Genotype guided Treatment With Antiplatelet Drugs in Patients With ST-segment-elevation Myocardial Infarction Undergoing Immediate PCI With Stent Implantation: Optimization of Treatment (POPular Genetics)<sup>45</sup> and Tailored Antiplatelet Initiation to Lesson Outcomes Due to Decreased Clopidogrel Response After Percutaneous Coronary Intervention (TAILOR-PCI) (ClinicalTrials.gov Identifier: NCT01742117) will provide more insights in the future.

With accurate and reliable bedside systems for rapid *CYP2C19* genotyping newly and broadly available, physicians have innovative tools potentially helping with personalized therapy decisions at their disposal.<sup>37,46,47</sup> This study

**Table 2** Angiographic and procedural characteristics

	Control group (n = 306)	Phenotype guided de-escalation group (n = 297)	p-Value
Cause of PCI			0.68
STEMI	159 (52.0)	149 (50.2)	
NSTEMI	147 (48.0)	148 (49.8)	
Access site			0.23
Brachial	2 (0.7)	0 (0.0)	
Femoral	210 (68.6)	194 (65.3)	
Radial	94 (30.7)	103 (34.7)	
No. of diseased coronary vessels			0.33
1	124 (40.5)	103 (34.7)	
2	82 (26.8)	89 (30.0)	
3	100 (32.7)	105 (35.4)	
Anticoagulant agent used for PCI			0.76
Bivalirudin	23 (7.5)	25 (8.4)	
Low molecular weight heparin	1 (0.3)	2 (0.7)	
Unfractionated heparin	282 (92.2)	270 (90.9)	
Use of glycopro- tein IIb/IIIa antagonist	14 (4.6)	17 (5.7)	0.58
TIMI flow grade before PCI			0.78
0	113 (36.9)	111 (37.4)	
1	41 (13.4)	35 (11.8)	
2	78 (25.5)	70 (23.6)	
3	74 (24.2)	81 (27.3)	
Coronary vessels treated			0.07
Left main	2 (0.7)	9 (3.0)	
Left anterior descending	141 (46.1)	133 (44.8)	
Left circumflex	52 (17.0)	64 (21.5)	
Right coronary artery	106 (34.6)	89 (30.0)	
Coronary bypass graft	5 (1.6)	2 (0.7)	
AHA/ACC classification of lesions			0.63
A	17 (5.6)	14 (4.7)	
B1	67 (21.9)	67 (22.6)	
B2	68 (22.2)	78 (26.3)	
C	154 (50.3)	138 (46.5)	

(Continued)

**Table 2** (Continued)

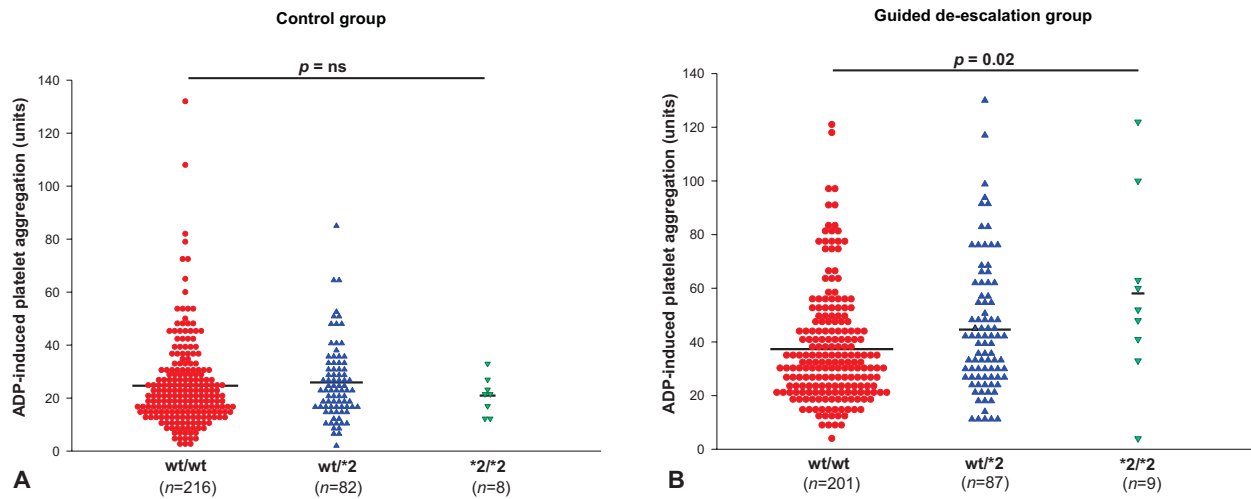
	Control group (n = 306)	Phenotype guided de-escalation group (n = 297)	p-Value
Ostial lesion	27 (8.8)	25 (8.4)	0.89
Bifurcation lesion	41 (13.4)	43 (14.5)	0.73
Stent type			0.63
DES	267 (87.3)	267 (89.9)	
BMS	0 (0.0)	1 (0.3)	
BVS	36 (11.8)	29 (9.8)	
None (PTCA only)	3 (1.0)	0 (0.0)	
TIMI flow grade after PCI			0.49
2	8 (2.6)	11 (3.7)	
3	298 (97.4)	286 (96.3)	

Abbreviations: ACC, American College of Cardiology; AHA, American Heart Association; BMS, bare metal stent; BVS, bioresorbable vascular scaffold; DES, drug-eluting stent; NSTEMI, non-ST-segment elevation myocardial infarction; PCI, percutaneous coronary intervention; PTCA, percutaneous transluminal coronary angioplasty; STEMI, ST-segment elevation myocardial infarction; TIMI, thrombolysis in myocardial infarction.

Note: Data are n (%).

represents one of the biggest ACS populations genotyped with the Spartan RX assay so far. It confirmed feasibility of rapid genotyping for the ACS setting. Of note, several institutions have started implementing *CYP2C19* genotyping in PCI patients as part of routine clinical care<sup>48-55</sup> following the 2010 U.S. Food and Drug Administration boxed warning on clopidogrel stating that the drug has a reduced effect in patients based on their genotype,<sup>56</sup> and subsequently developed experience and routine in using the respective assays. Importantly, for the PGDE strategy that implies a guided early (< 30 days) de-escalation regimen with intra-class switching of P2Y<sub>12</sub> inhibitors in ACS patients, physicians at the primary hospitals need to carefully instruct patients about the necessary treatment change from prasugrel to clopidogrel 1 week after discharge, or provide them with pre-packed medication, and a follow-up visit for PFT is mandatory. This is time-consuming, and patients need to be fully compliant and definitely return to the hospital after 14 days. Especially in centres where *CYP2C19* genotyping in ACS patients is already routinely performed, but also in others, rapid genotyping during the hospital stay can be a very useful, easy, and valuable tool for pre-selecting patients who will be suitable for guided de-escalation of potent antiplatelets.

Our study provides evidence for a correlation between *CYP2C19* genotypes and on-clopidogrel PR on the Multiplate analyser in ACS patients. For *CYP2C19*\*2, Mega et al also



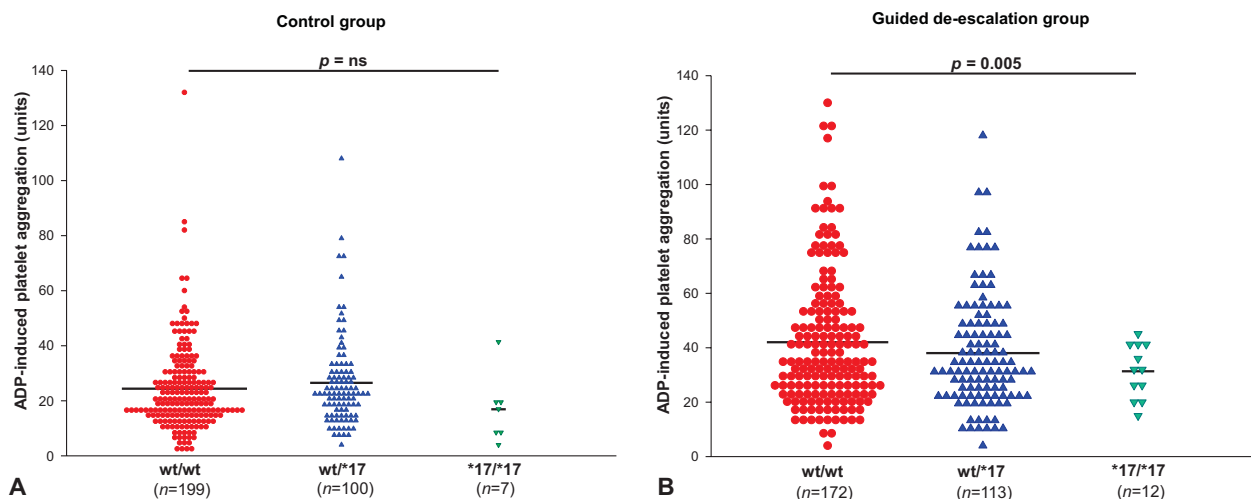
**Fig. 2** Adenosine diphosphate (ADP)-induced platelet reactivity and *CYP2C19\*2* carrier status. ADP-induced platelet aggregation values stratified for 3 sub-sets of *CYP2C19\*2* carrier status for the control (A) and phenotype guided de-escalation group (B) at 14 days' follow-up. Wild-type (wt/wt) versus heterozygous *CYP2C19\*2* carriers (wt/\*2) versus homozygous *CYP2C19\*2* carriers (\*2/\*2). The black bar indicates mean platelet reactivity. wt, wild-type.

described an association between carrier status and higher platelet aggregation values with light transmission aggregometry in response to clopidogrel among participants of the TRITON-TIMI 38 trial.<sup>13</sup> For *CYP2C19\*17*, another study in > 1,500 PCI patients showed significantly reduced ADP-induced platelet aggregation values in *CYP2C19\*17* carriers,<sup>18</sup> and a genome-wide association study also provided evidence for a correlation between *CYP2C19* genotype and platelet response to clopidogrel.<sup>12</sup> For ACS patients treated with prasugrel, however, we did not observe an association between on-treatment PR and *CYP2C19\*2* or *CYP2C19\*17* carrier status. This finding is in line with large sub-group analyses from the PLATO<sup>19</sup> and TRITON-TIMI-38<sup>57</sup> trials which showed that common *CYP2C19* genetic variants did not affect drug metabolite levels, platelet aggregation levels,

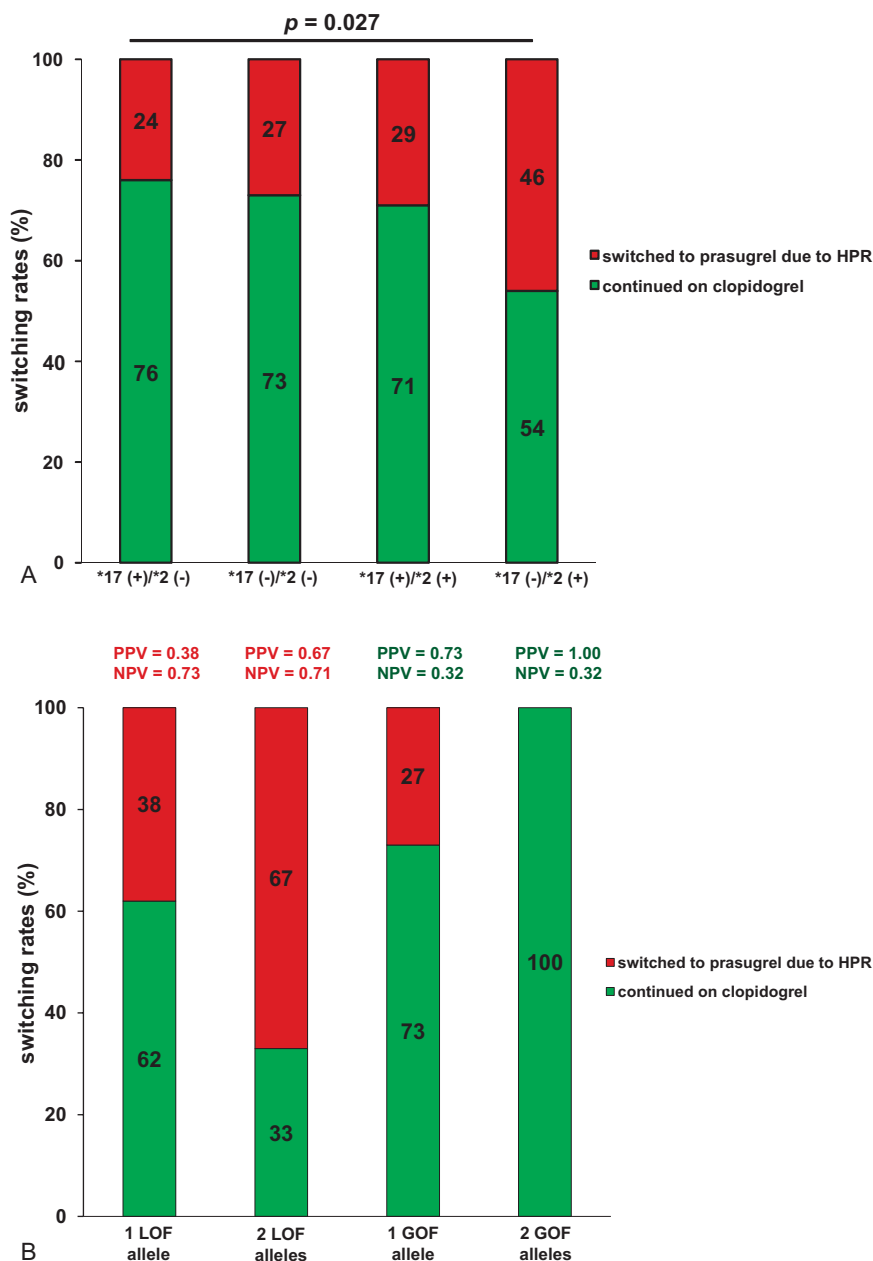
or clinical cardiovascular event rates in subjects treated with prasugrel or ticagrelor.

Of note, two-thirds (67%) of the PGDE group individuals carrying two LoF alleles had to be switched back to prasugrel due to HPR, compared with none of the patients carrying two GoF alleles. Thus, rapid genotyping during the hospital stay can be a very useful and valuable tool for identification of patients who will and who may not be suitable for guided de-escalation of potent anti-platelets in the further course of treatment.

Despite the good correlation between *CYP2C19* genotypes and on-treatment PR seen in our study, the rate of *CYP2C19\*2* allele carriers in PGDE patients, who had to be switched back to prasugrel due to insufficient clopidogrel response, was only 43%. In the patient population presented here, the



**Fig. 3** Adenosine diphosphate (ADP)-induced platelet reactivity and *CYP2C19\*17* carrier status. ADP-induced platelet aggregation values stratified for 3 sub-sets of *CYP2C19\*17* carrier status for the control (A) and phenotype guided de-escalation group (B) at 14 days' follow-up. Wild-type (wt/wt) versus heterozygous *CYP2C19\*17* carriers (wt/\*17) versus homozygous *CYP2C19\*17* carriers (\*17/\*17). The black bar indicates mean platelet reactivity. wt, wild-type.



**Fig. 4** Genotype status and switching rates in the phenotype guided de-escalation (PGDE) group. Changes of anti-platelet therapy within the phenotype guided de-escalation group in relation to *CYP2C19*\*2/*CYP2C19*\*17 genotype groups. (A) Group 1: patients with at least one \*17 allele and no \*2 allele. Group 2: patients with no \*17 allele and no \*2 allele. Group 3: patients with at least one \*17 allele and at least one \*2 allele. Group 4: patients with no \*17 allele and at least one \*2 allele. \*17 = *CYP2C19*\*17; \*2 = *CYP2C19*\*2. (B) PPV/NPV values in red relate to ‘high platelet reactivity (HPR)’ which prompted treatment changes with a switch from clopidogrel to prasugrel. PPV/NPV values in green relate to ‘No HPR’, leading to clopidogrel maintenance therapy. Abbreviations: LOF, loss-of-function; GOF, gain-of-function; PPV, positive predictive value; NPV, negative predictive value.

positive predictive value of homozygous *CYP2C19*\*2 allele carriage for HPR phenotype in PFT, which prompted treatment changes, was 0.67. Thus, a significant number of ‘clopidogrel non-responders’ would have been missed with a sole genotyping approach for guidance of early de-escalation. This finding corroborates studies reporting that genetic polymorphisms account only for up to 12% of the variation in platelet aggregation in PCI patients, with other factors collectively explaining > 80% of the variation.<sup>58</sup> However, the positive predictive value of homozygous *CYP2C19*\*17 allele carriage for continued clopidogrel maintenance therapy was

1.00. Therefore, *CYP2C19* genotyping seems to be useful for pre-selecting patients for the PGDE approach and seems to have an important complementary role in this setting, but cannot substitute for PFT for guidance of treatment.

In this context, there is very limited evidence from randomized controlled trials for genotyping-guided individualized anti-platelet therapy in PCI patients with stable coronary disease or ACS so far.<sup>59-61</sup> In the ARCTIC-GENE study, more than 1,300 patients of the ARCTIC population were genotyped for LoF and GoF *CYP2C19* alleles. For this population, the genetic profile was a marker of response to



**Table 3** Clinical outcomes at 12-month follow-up

	Control group (n = 306)	Phenotype guided de-es- calation group (n = 297)	Hazard ratio (95% CI)	p-Value
Primary endpoint (cardiovascular death, myocardial infarction, stroke, bleeding BARC $\geq 2$ )	27 (8.8)	26 (8.6)	0.99 (0.58–1.70)	0.97
Combined ischaemic events (cardiovascular death, myocardial infarction, stroke)	7 (2.3)	9 (3.0)	1.32 (0.49–3.54)	0.58
Key secondary endpoint (BARC bleeding $\geq 2$ )	21 (6.9)	18 (6.1)	0.89 (0.47–1.66)	0.71

Abbreviations: BARC, Bleeding Academic Research Consortium; CI, confidence interval.

Note: Data are n (%). p-Values presented are for superiority comparisons.

clopidogrel in PFT but was not related to clinical outcome, suggesting that genotyping added little to the PFT information already collected for the main trial.<sup>62</sup> Recently, a non-randomized study on genotype-guided anti-platelet therapy after PCI in 1,815 patients showed that the risk for major adverse events was significantly higher in LoF allele carriers treated with clopidogrel versus ticagrelor/prasugrel.<sup>53,63</sup> The randomized *Pharmacogenetics of Clopidogrel in Patients with Acute Coronary Syndromes* trial recently compared an anti-platelet strategy that incorporated rapid pharmacogenomic testing for the *CYP2C29\*2* LOF, the *CYP2C19\*17* GOF allele, and the ABCB1 genotype with 'standard of care' in patients with ACS.<sup>64,65</sup> The investigators planned to enrol a total of 3,612 patients, but prematurely stopped the study after enrolling only 888 patients due to regulatory issues with the rapid genotyping platform in Italy. At 12-month follow-up, the rate of the primary endpoint (cardiovascular death, non-fatal myocardial infarction, non-fatal stroke, and BARC type 3–5 bleeding) was significantly lower in the pharmacogenomic arm, driven primarily by a reduction in ischaemic events. However, the standard-of-care arm was significantly under-treated according to current guidelines, and the event rates in the standard-of-care arm were extraordinarily high. Moreover, the mechanistic basis of the findings remained unclear and the study was discontinued prematurely after only one-quarter of the planned study population was enrolled. Thus, this trial is significantly under-powered and may therefore largely over-estimate effect size.<sup>65</sup> Hence, ongoing clinical trials on the value of genotyping-guided individualized anti-platelet therapy may provide more insights on the topic. There are several large-scale and well-designed clinical trials on-going that aim to answer this question, e.g., the TAILOR-PCI (ClinicalTrials.gov Identifier: NCT01742117) trial, with an estimated enrolment of 5,270 patients with either ACS or stable coronary artery disease and an estimated study completion date of March 2020, or the Dutch POPular Genetics trial.<sup>45</sup> In concert, these trials will provide important and interesting insights and may help answer the question of whether genetic testing alone could be useful for guidance of anti-platelet treatment in the future.

We acknowledge limitations related to our work. One limitation of this prospective study is that our protocol

mandated to adjust anti-platelet therapy based on the PFT results in the PGDE group. Thus, a relevant percentage of *CYP2C19\*2* carriers was switched back to prasugrel very early, which precludes conclusions about the impact of *CYP2C19* genotypes on clinical outcomes with clopidogrel. Noteworthy, this analysis was not powered for clinical endpoints, making the real prognostic impact of the genotype difficult to judge.

In conclusion, *CYP2C19\*2* and *CYP2C19\*17* carrier status in rapid genotyping correlates with PR in ACS patients treated with clopidogrel and thus might play a valuable role for pre-selecting patients who will and who may not be suitable for early guided de-escalation of anti-platelet treatment. However, we did not observe added benefit of genotyping to predict ischaemic and bleeding risk in patients who underwent a PGDE approach, with respective early treatment adjustments.

### What is known about this topic?

- Phenotype-guided de-escalation of P2Y<sub>12</sub>-inhibitor treatment with an early switch from prasugrel to clopidogrel was recently identified as an effective alternative treatment strategy in ACS patients undergoing PCI.
- In genotyping, presence of *CYP2C19\*2* and \*3 alleles are established risk factors for ischaemic events with clopidogrel, whereas *CYP2C19\*17* carriers are exposed to increased bleeding risk.

### What does this paper add?

- This study shows that *CYP2C19\*2* and *CYP2C19\*17* carrier status correlates with platelet reactivity in ACS patients treated with clopidogrel, with *CYP2C19\*2* as a strong and independent predictor of platelet reactivity in multivariate analysis, and thus might be useful for pre-selecting patients who will and who may not be suitable for guided de-escalation of anti-platelet treatment.

### Funding

TROPICAL-ACS is an independent, investigator-initiated trial with an academic sponsor (Klinikum der Universität München). The trial was financially supported by a research grant from Roche Diagnostics (Rotkreuz, Switzerland) and a research grant from the German Centre for Cardiovascular Research (DZHK). Prasugrel purchase, drug delivery and related logistics were kindly supported by Eli Lilly and Company and Daiichi Sankyo Company. Funders of this study had no role in study design, collection of data and data analysis, or writing of the manuscript.

### Conflict of Interest

Dr. Trenk reports personal fees from AstraZeneca, Bayer, Boehringer Ingelheim, Bristol-Myers Squibb, Daiichi Sankyo, Eli Lilly and Otsuka, Sanofi, outside the submitted work; Dr. Aradi reports personal fees from Roche Diagnostics, DSI/Lilly, AstraZeneca, Pfizer, Bayer AG, MSD Pharma, outside the submitted work; Dr. Sibbing reports grants from Roche Diagnostics and Daiichi Sankyo, during the conduct of the study; personal fees from Bayer AG, Daiichi Sankyo Eli Lilly, Roche Diagnostics, MSD, Pfizer, Astra Zeneca, outside the submitted work; Dr. Geisler reports personal fees from Astra Zeneca, Boehringer Ingelheim, Pfizer and MSD, grants and personal fees from Bayer Healthcare, Bristol Myers Squibb, Daiichi Sankyo, Eli Lilly, Medcines Company, Siemens Healthcare, grants from Spartan Bioscience, outside the submitted work. The other authors have nothing to disclose.

### Acknowledgements

The TROPICAL-ACS investigators thank all patients who participated in the trial. We also want to thank all investigators and study nurses for their valuable contribution. The valuable project management work of Monika Baylacher (LMU München) throughout the entire trial is kindly acknowledged. We also acknowledge the valuable work on data management by Katja Wendrich (TU Dresden, KKS), the work on study drug preparation by Andreas Thalmeier (LMU München) and technical assistance by Luis Pablo Hack (University Hospital Tuebingen). The Data and Safety Monitoring Board members were Albert Schömig (Munich, Germany), Helmut Schühlen (Berlin, Germany) and Martin Hadamitzky (Munich, Germany). The independent Event Adjudication Committee members were Jürgen Pache (Tutzing, Germany), Ute Wilbert-Lampen (Munich, Germany) and Dritan Poci (Sweden). Study project management was done by the Clinical Study Center (CSC) of Ludwig-Maximilians-Universität München (Munich, Germany). Study monitoring was done by an independent service provider, which was the Münchner Studienzentrums (MSZ) (Munich, Germany). The Steering Committee consisted of Steffen Massberg (Study chair, Munich, Germany), Dirk Sibbing (Study CI, Munich, Germany), Julinda Mehilli (Study Co-CI, Munich, Germany), Jörg Hausleiter (Munich, Germany), Franz-Josef Neumann (Bad Krozingen, Germany), Kurt Huber (Vienna, Austria), Daniel Aradi (Balatonfüred, Hungary) and Lukasz Koltowski (Warsaw, Poland).

### References

- 1 Amsterdam EA, Wenger NK, Brindis RG, et al. 2014 AHA/ACC guideline for the management of patients with non-ST-elevation acute coronary syndromes: a report of the American College of Cardiology/American Heart Association Task Force on Practice Guidelines. *J Am Coll Cardiol* 2014;64(24):e139–e228
- 2 Roffi M, Patrono C, Collet JP, et al; ESC Scientific Document Group. 2015 ESC guidelines for the management of acute coronary syndromes in patients presenting without persistent ST-segment elevation: Task Force for the Management of Acute Coronary Syndromes in Patients Presenting without Persistent ST-Segment Elevation of the European Society of Cardiology (ESC). *Eur Heart J* 2016;37(03):267–315
- 3 Ibanez B, James S, Agewall S, et al. ESC Scientific Document Group. 2017 ESC guidelines for the management of acute myocardial infarction in patients presenting with ST-segment elevation: the Task Force for the management of acute myocardial infarction in patients presenting with ST-segment elevation of the European Society of Cardiology (ESC). *Eur Heart J* 2018;39(02):119–177
- 4 Zettler ME, Peterson ED, McCoy LA, et al; TRANSLATE-ACS Investigators. Switching of adenosine diphosphate receptor inhibitor after hospital discharge among myocardial infarction patients: insights from the Treatment with Adenosine Diphosphate Receptor Inhibitors: Longitudinal Assessment of Treatment Patterns and Events after Acute Coronary Syndrome (TRANSLATE-ACS) observational study. *Am Heart J* 2017;183:62–68
- 5 De Luca L, D'Ascenzo F, Musumeci G, et al. Incidence and outcome of switching of oral platelet P2Y<sub>12</sub> receptor inhibitors in patients with acute coronary syndromes undergoing percutaneous coronary intervention: the SCOPE registry. *EuroIntervention* 2017;13(04):459–466
- 6 Motovska Z, Hlinomaz O, Miklik R, et al; PRAGUE-18 Study Group. Prasugrel versus ticagrelor in patients with acute myocardial infarction treated with primary percutaneous coronary intervention: multicenter randomized PRAGUE-18 study. *Circulation* 2016;134(21):1603–1612
- 7 Déry JP, Mehta SR, Fisher HN, et al; Canadian Observational AntiPlatelet sTudy (COAPT) Investigators. Baseline characteristics, adenosine diphosphate receptor inhibitor treatment patterns, and in-hospital outcomes of myocardial infarction patients undergoing percutaneous coronary intervention in the prospective Canadian Observational AntiPlatelet sTudy (COAPT). *Am Heart J* 2016;181:26–34
- 8 Angiolillo DJ, Rollini F, Storey RE, et al. International expert consensus on switching platelet P2Y<sub>12</sub> receptor-inhibiting therapies. *Circulation* 2017;136(20):1955–1975
- 9 Gurbel PA, Bliden KP, Hiatt BL, O'Connor CM. Clopidogrel for coronary stenting: response variability, drug resistance, and the effect of pretreatment platelet reactivity. *Circulation* 2003;107(23):2908–2913
- 10 Mega JL, Simon T, Collet JP, et al. Reduced-function CYP2C19 genotype and risk of adverse clinical outcomes among patients treated with clopidogrel predominantly for PCI: a meta-analysis. *JAMA* 2010;304(16):1821–1830
- 11 Sibbing D, Stegherr J, Latz W, et al. Cytochrome P450 2C19 loss-of-function polymorphism and stent thrombosis following percutaneous coronary intervention. *Eur Heart J* 2009;30(08):916–922
- 12 Shuldiner AR, O'Connell JR, Bliden KP, et al. Association of cytochrome P450 2C19 genotype with the antiplatelet effect and clinical efficacy of clopidogrel therapy. *JAMA* 2009;302(08):849–857
- 13 Mega JL, Close SL, Wiviott SD, et al. Cytochrome p-450 polymorphisms and response to clopidogrel. *N Engl J Med* 2009;360(04):354–362
- 14 Collet JP, Hulot JS, Pena A, et al. Cytochrome P450 2C19 polymorphism in young patients treated with clopidogrel after myocardial infarction: a cohort study. *Lancet* 2009;373(9660):309–317

- 15 Simon T, Verstuylt C, Mary-Krause M, et al; French Registry of Acute ST-Elevation and Non-ST-Elevation Myocardial Infarction (FAST-MI) Investigators. Genetic determinants of response to clopidogrel and cardiovascular events. *N Engl J Med* 2009;360(04):363–375
- 16 Scott SA, Sangkuhl K, Stein CM, et al; Clinical Pharmacogenetics Implementation Consortium. Clinical Pharmacogenetics Implementation Consortium guidelines for CYP2C19 genotype and clopidogrel therapy: 2013 update. *Clin Pharmacol Ther* 2013;94(03):317–323
- 17 Cavallari LH. Personalizing antiplatelet prescribing using genetics for patients undergoing percutaneous coronary intervention. *Expert Rev Cardiovasc Ther* 2017;15(08):581–589
- 18 Sibbing D, Koch W, Gebhard D, et al. Cytochrome 2C19\*17 allelic variant, platelet aggregation, bleeding events, and stent thrombosis in clopidogrel-treated patients with coronary stent placement. *Circulation* 2010;121(04):512–518
- 19 Wallentin L, James S, Storey RF, et al; PLATO investigators. Effect of CYP2C19 and ABCB1 single nucleotide polymorphisms on outcomes of treatment with ticagrelor versus clopidogrel for acute coronary syndromes: a genetic substudy of the PLATO trial. *Lancet* 2010;376(9749):1320–1328
- 20 Zabalza M, Subirana I, Sala J, et al. Meta-analyses of the association between cytochrome CYP2C19 loss- and gain-of-function polymorphisms and cardiovascular outcomes in patients with coronary artery disease treated with clopidogrel. *Heart* 2012;98(02):100–108
- 21 Li Y, Tang HL, Hu YF, Xie HG. The gain-of-function variant allele CYP2C19\*17: a double-edged sword between thrombosis and bleeding in clopidogrel-treated patients. *J Thromb Haemost* 2012;10(02):199–206
- 22 Giusti B, Gori AM, Marcucci R, et al. Relation of cytochrome P450 2C19 loss-of-function polymorphism to occurrence of drug-eluting coronary stent thrombosis. *Am J Cardiol* 2009;103(06):806–811
- 23 Trenk D, Hochholzer W, Fromm MF, et al. Cytochrome P450 2C19 681G>A polymorphism and high on-clopidogrel platelet reactivity associated with adverse 1-year clinical outcome of elective percutaneous coronary intervention with drug-eluting or bare-metal stents. *J Am Coll Cardiol* 2008;51(20):1925–1934
- 24 Hulot JS, Collet JP, Silvain J, et al. Cardiovascular risk in clopidogrel-treated patients according to cytochrome P450 2C19\*2 loss-of-function allele or proton pump inhibitor coadministration: a systematic meta-analysis. *J Am Coll Cardiol* 2010;56(02):134–143
- 25 Sorich MJ, Rowland A, McKinnon RA, Wiese MD. CYP2C19 genotype has a greater effect on adverse cardiovascular outcomes following percutaneous coronary intervention and in Asian populations treated with clopidogrel: a meta-analysis. *Circ Cardiovasc Genet* 2014;7(06):895–902
- 26 Bauer T, Bouman HJ, van Werkum JW, Ford NF, ten Berg JM, Taubert D. Impact of CYP2C19 variant genotypes on clinical efficacy of antiplatelet treatment with clopidogrel: systematic review and meta-analysis. *BMJ* 2011;343:d4588
- 27 Holmes MV, Perel P, Shah T, Hingorani AD, Casas JP. CYP2C19 genotype, clopidogrel metabolism, platelet function, and cardiovascular events: a systematic review and meta-analysis. *JAMA* 2011;306(24):2704–2714
- 28 Jang JS, Cho KI, Jin HY, et al. Meta-analysis of cytochrome P450 2C19 polymorphism and risk of adverse clinical outcomes among coronary artery disease patients of different ethnic groups treated with clopidogrel. *Am J Cardiol* 2012;110(04):502–508
- 29 Liu YP, Hao PP, Zhang MX, et al. Association of genetic variants in CYP2C19 and adverse clinical outcomes after treatment with clopidogrel: an updated meta-analysis. *Thromb Res* 2011;128(06):593–594
- 30 Viviani Anselmi C, Briguori C, Roncarati R, et al. Routine assessment of on-clopidogrel platelet reactivity and gene polymorphisms in predicting clinical outcome following drug-eluting stent implantation in patients with stable coronary artery disease. *JACC Cardiovasc Interv* 2013;6(11):1166–1175
- 31 Cresci S, Depta JP, Lenzini PA, et al. Cytochrome p450 gene variants, race, and mortality among clopidogrel-treated patients after acute myocardial infarction. *Circ Cardiovasc Genet* 2014;7(03):277–286
- 32 Stimpfle F, Geisler T. Impact of tailored anti-P2Y12 therapies in acute coronary syndromes. *Pharmacogenomics* 2015;16(05):493–499
- 33 Cavallari LH, Franchi F, Rollini F, et al. Clinical implementation of rapid CYP2C19 genotyping to guide antiplatelet therapy after percutaneous coronary intervention. *J Transl Med* 2018;16(01):92
- 34 Sibbing D, Aradi D, Jacobshagen C, et al; TROPICAL-ACS Investigators. A randomised trial on platelet function-guided de-escalation of antiplatelet treatment in ACS patients undergoing PCI. Rationale and design of the Testing Responsiveness to Platelet Inhibition on Chronic Antiplatelet Treatment for Acute Coronary Syndromes (TROPICAL-ACS) Trial. *Thromb Haemost* 2017;117(01):188–195
- 35 Sibbing D, Aradi D, Jacobshagen C, et al; TROPICAL-ACS Investigators. Guided de-escalation of antiplatelet treatment in patients with acute coronary syndrome undergoing percutaneous coronary intervention (TROPICAL-ACS): a randomised, open-label, multicentre trial. *Lancet* 2017;390(10104):1747–1757
- 36 Aradi D, Kirtane A, Bonello L, et al. Bleeding and stent thrombosis on P2Y12-inhibitors: collaborative analysis on the role of platelet reactivity for risk stratification after percutaneous coronary intervention. *Eur Heart J* 2015;36(27):1762–1771
- 37 Roberts JD, Wells GA, Le May MR, et al. Point-of-care genetic testing for personalisation of antiplatelet treatment (RAPID GENE): a prospective, randomised, proof-of-concept trial. *Lancet* 2012;379(9827):1705–1711
- 38 Tantry US, Bonello L, Aradi D, et al; Working Group on On-Treatment Platelet Reactivity. Consensus and update on the definition of on-treatment platelet reactivity to adenosine diphosphate associated with ischemia and bleeding. *J Am Coll Cardiol* 2013;62(24):2261–2273
- 39 Thygesen K, Alpert JS, Jaffe AS, et al; Joint ESC/ACCF/AHA/WHF Task Force for Universal Definition of Myocardial Infarction; Authors/Task Force Members Chairpersons; Biomarker Subcommittee; ECG Subcommittee; Imaging Subcommittee; Classification Subcommittee; Intervention Subcommittee; Trials & Registries Subcommittee; Trials & Registries Subcommittee; Trials & Registries Subcommittee; ESC Committee for Practice Guidelines (CPG); Document Reviewers. Third universal definition of myocardial infarction. *J Am Coll Cardiol* 2012;60(16):1581–1598
- 40 Mehran R, Rao SV, Bhatt DL, et al. Standardized bleeding definitions for cardiovascular clinical trials: a consensus report from the Bleeding Academic Research Consortium. *Circulation* 2011;123(23):2736–2747
- 41 Rodriguez S, Gaunt TR, Day IN. Hardy-Weinberg equilibrium testing of biological ascertainment for Mendelian randomization studies. *Am J Epidemiol* 2009;169(04):505–514
- 42 Rollini F, Franchi F, Angiolillo DJ. Switching P2Y12-receptor inhibitors in patients with coronary artery disease. *Nat Rev Cardiol* 2016;13(01):11–27
- 43 Cuisset T, Deharo P, Quilici J, et al. Benefit of switching dual antiplatelet therapy after acute coronary syndrome: the TOPIC (timing of platelet inhibition after acute coronary syndrome) randomized study. *Eur Heart J* 2017;38(41):3070–3078
- 44 Sherwood MW, Wiviott SD, Peng SA, et al. Early clopidogrel versus prasugrel use among contemporary STEMI and NSTEMI patients in the US: insights from the National Cardiovascular Data Registry. *J Am Heart Assoc* 2014;3(02):e000849
- 45 Bergmeijer TO, Janssen PW, Schipper JC, et al. CYP2C19 genotype-guided antiplatelet therapy in ST-segment elevation myocardial

- infarction patients—rationale and design of the Patient Outcome after primary PCI (POPular) Genetics study. *Am Heart J* 2014;168(01):16–22
- 46 Wirth F, Zahra G, Xuereb RG, Barbara C, Fenech A, Azzopardi LM. Comparison of a rapid point-of-care and two laboratory-based CYP2C19\*2 genotyping assays for personalisation of antiplatelet therapy. *Int J Clin Pharm* 2016;38(02):414–420
  - 47 Erlinge D, James S, Duvvuru S, et al. Clopidogrel metaboliser status based on point-of-care CYP2C19 genetic testing in patients with coronary artery disease. *Thromb Haemost* 2014;111(05):943–950
  - 48 Weitzel KW, Elsej AR, Langaee TY, et al. Clinical pharmacogenetics implementation: approaches, successes, and challenges. *Am J Med Genet C Semin Med Genet* 2014;166C(01):56–67
  - 49 Shuldiner AR, Palmer K, Pakyz RE, et al. Implementation of pharmacogenetics: the University of Maryland Personalized Anti-platelet Pharmacogenetics Program. *Am J Med Genet C Semin Med Genet* 2014;166C(01):76–84
  - 50 Peterson JF, Field JR, Unertl KM, et al. Physician response to implementation of genotype-tailored antiplatelet therapy. *Clin Pharmacol Ther* 2016;100(01):67–74
  - 51 Lee JA, Lee CR, Reed BN, et al. Implementation and evaluation of a CYP2C19 genotype-guided antiplatelet therapy algorithm in high-risk coronary artery disease patients. *Pharmacogenomics* 2015;16(04):303–313
  - 52 Harada S, Zhou Y, Duncan S, et al. Precision medicine at the University of Alabama at Birmingham: laying the foundational processes through implementation of genotype-guided antiplatelet therapy. *Clin Pharmacol Ther* 2017;102(03):493–501
  - 53 Cavallari LH, Lee CR, Beitelshees AL, et al. IGNITE Network. Multisite investigation of outcomes with implementation of CYP2C19 genotype-guided antiplatelet therapy after percutaneous coronary intervention. *JACC Cardiovasc Interv* 2018;11(02):181–191
  - 54 Cavallari LH, Beitelshees AL, Blake KV, et al; The IGNITE Pharmacogenetics Working Group. The IGNITE Pharmacogenetics Working Group: an opportunity for building evidence with pharmacogenetic implementation in a real-world setting. *Clin Transl Sci* 2017;10(03):143–146
  - 55 Empey PE, Stevenson JM, Tuteja S, et al; IGNITE Network. Multisite investigation of strategies for the implementation of CYP2C19 genotype-guided antiplatelet therapy. *Clin Pharmacol Ther* 2017. Doi: 10.1002/cpt.1006
  - 56 Holmes DR Jr, Dehmer GJ, Kaul S, Leifer D, O’Gara PT, Stein CM. ACCF/AHA clopidogrel clinical alert: approaches to the FDA “boxed warning”: a report of the American College of Cardiology Foundation Task Force on clinical expert consensus documents and the American Heart Association endorsed by the Society for Cardiovascular Angiography and Interventions and the Society of Thoracic Surgeons. *J Am Coll Cardiol* 2010;56(04):321–341
  - 57 Mega JL, Close SL, Wiviott SD, et al. Cytochrome P450 genetic polymorphisms and the response to prasugrel: relationship to pharmacokinetic, pharmacodynamic, and clinical outcomes. *Circulation* 2009;119(19):2553–2560
  - 58 Hochholzer W, Trenk D, Fromm MF, et al. Impact of cytochrome P450 2C19 loss-of-function polymorphism and of major demographic characteristics on residual platelet function after loading and maintenance treatment with clopidogrel in patients undergoing elective coronary stent placement. *J Am Coll Cardiol* 2010;55(22):2427–2434
  - 59 Alexopoulos D, Dimitropoulos G, Davlouros P, et al. Prasugrel overcomes high on-clopidogrel platelet reactivity post-stenting more effectively than high-dose (150-mg) clopidogrel: the importance of CYP2C19\*2 genotyping. *JACC Cardiovasc Interv* 2011;4(04):403–410
  - 60 Collet JP, Hulot JS, Anzaha G, et al; CLOVIS-2 Investigators. High doses of clopidogrel to overcome genetic resistance: the randomized crossover CLOVIS-2 (Clopidogrel and Response Variability Investigation Study 2). *JACC Cardiovasc Interv* 2011;4(04):392–402
  - 61 Pereira NL, Sargent DJ, Farkouh ME, Rihal CS. Genotype-based clinical trials in cardiovascular disease. *Nat Rev Cardiol* 2015;12(08):475–487
  - 62 Collet JP, Hulot JS, Cuisset T, et al; ARCTIC investigators. Genetic and platelet function testing of antiplatelet therapy for percutaneous coronary intervention: the ARCTIC-GENE study. *Eur J Clin Pharmacol* 2015;71(11):1315–1324
  - 63 Sibbing D, Gross L. CYP2C19 genotyping in percutaneous coronary intervention-treated patients: ready for prime time? *JACC Cardiovasc Interv* 2018;11(02):192–194
  - 64 Notarangelo FM, Maglietta G, Bevilacqua P, et al. Pharmacogenomic approach to selecting antiplatelet therapy in patients with acute coronary syndromes: the PHARMCLO Trial. *J Am Coll Cardiol* 2018;71(17):1869–1877
  - 65 Price MJ, Angiolillo DJ. Pharmacogenomic testing to select antiplatelet therapy. *J Am Coll Cardiol* 2018;71(17):1878–1881