

Quiz

Ritesh Bhoot¹ Pradipta Tripathy¹

¹Vivekanand Hospital, Bhubaneswar, Odisha, India

Indian J Neurotrauma 2018;15:47–49

1. Structural integrity of the spinal cord at the cellular level can be detected by
 - a. Q-space imaging
 - b. diffusion kurtosis imaging
 - c. high-B radial DWI
 - d. fiber tractography
2. Which of the following is not an established thoracolumbar trauma classification?
 - a. Denis classification
 - b. Ferguson and Allen classification
 - c. TLICS classification
 - d. Holdsworth classification
3. Which of the following is the clinical feature of “man-in-barrel syndrome”?
 - a. Weakness of the legs with relative preservation of arms strength
 - b. Weakness of the arms with relative preservation of leg strength
 - c. Symmetrical degree of sensory loss below the level of the lesion
 - d. Contralateral sensory loss below the level of the lesion
4. Which NASCIS trial showed benefit in spinal cord injury as assessed by the primary outcome measure?
 - a. NASCIS I
 - b. NASCIS II
 - c. NASCIS III
 - d. None of the above
5. Power’s ratio applies only for
 - a. AAD
 - b. AOD
 - c. Down’s syndrome
 - d. odontoid fracture
6. Froment’s sign is indicative of compression of
 - a. ulnar nerve
 - b. median nerve
 - c. radial nerve
 - d. all of the above.
7. Classic Cushing’s triad does not include
 - a. systolic hypertension
 - b. bradycardia
 - c. diastolic hypertension
 - d. irregular respiration
8. Which of the following is not the cause of tension pneumocephalus?
 - a. When N₂O anesthesia is discontinued prior to closure of the dura
 - b. When a ball-valve effect occurs due to an opening in the intracranial compartment
 - c. When trapped room temperature expands with warming to body temperature
 - d. In the presence of gas producing organisms

Address for correspondence

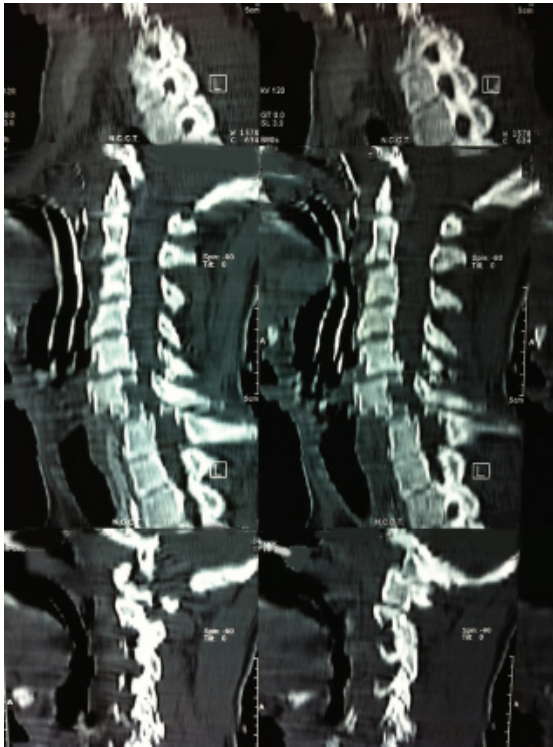
Pradipta Tripathy, MCh, DNB, Vivekanand Hospital, Bhubaneswar, Odisha 751003, India (e-mail: pradipta_tripathy@yahoo.com).

Copyright ©2018 Neurotrauma Society of India

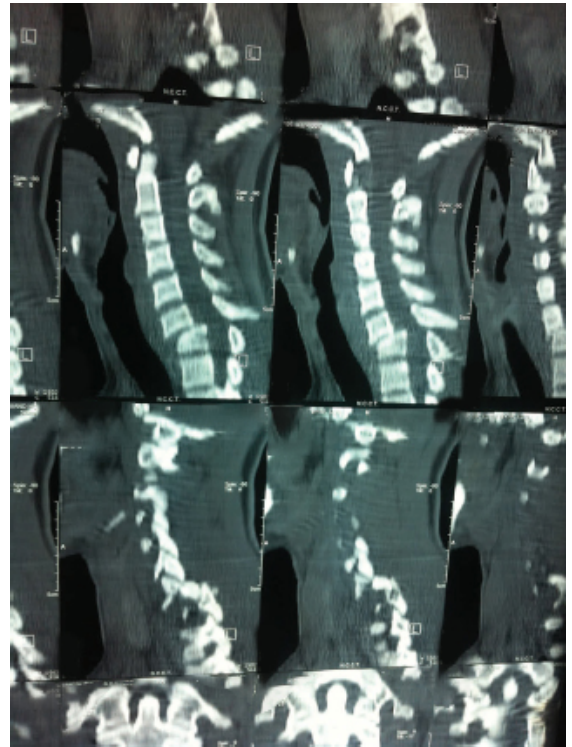
DOI <https://doi.org/10.1055/s-0038-1670611>.
ISSN 0973-0508.

9. Which of the following dislocation is an artifact?

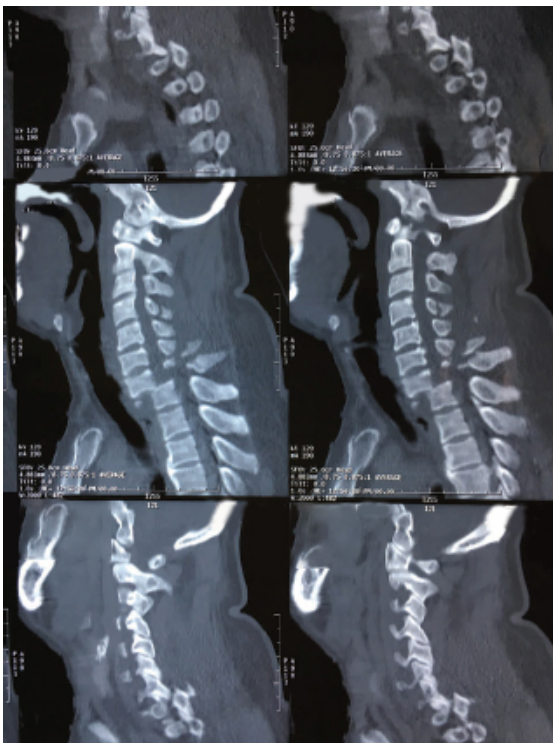
a.



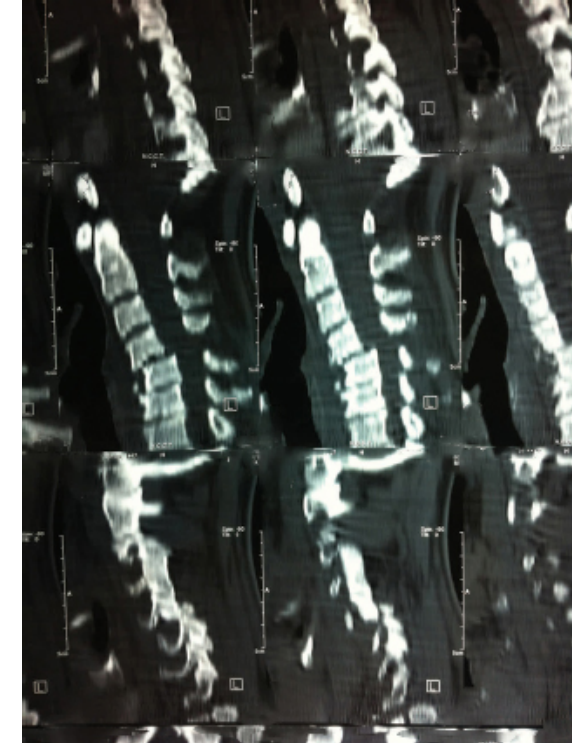
c.



b.



d.



10. Which of the following is not a scale for CSDH?
 - a. Markwelder and Reulen
 - b. Bender and Cristoff
 - c. Nomura and colleagues
 - d. Gender and Beks
11. In Steele's rule of third the canal at the level of the atlas does not include
 - a. dens
 - b. TAL
 - c. space
 - d. spinal cord
12. Effendi classification describes about
 - a. Jefferson's fracture
 - b. Odontoid fracture
 - c. Hangman's fracture
 - d. none of the above
13. Which of the following does not cause instability?
 - a. Avulsion fracture
 - b. Teardrop fracture
 - c. Chance fracture
 - d. Quadrangular fracture
14. Which of the following is a late complication of traumatic brain injury?
 - a. Parkinson's disease
 - b. Motor neuron disease
 - c. Multiple sclerosis
 - d. Alzheimer's disease
15. Which of the following is not a characteristic feature of shaken baby syndrome?
 - a. Retinal hemorrhages
 - b. Cervicomedullary injury
 - c. Subdural hematoma
 - d. Subarachnoid hemorrhage

The answers to this quiz will be available in the next issue of the journal.