



Permanent External Biliary Catheter: A Difficult Problem Managed by Rescue Technique of Hepaticocholecysto-gastrostomy

Vikas Singla¹ Ajit Kumar Yadav² Anil Arora¹ Arun Gupta²

¹Institute of Liver, Gastroenterology and Pancreaticobiliary Sciences, Sir Ganga Ram Hospital, New Delhi, India

²Department of Intervention Radiology, Sir Ganga Ram Hospital, New Delhi, India

Address for correspondence Vikas Singla, DM, Institute of Liver, Gastroenterology and Pancreaticobiliary Sciences, Sir Ganga Ram Hospital, Rajinder Nagar 110060, New Delhi, India (e-mail: singlavikas1979@gmail.com).

J Digest Endosc 2021;12:54–55.

Abstract

Keywords

- ▶ cholecystogastrostomy
- ▶ endoscopic ultrasound
- ▶ permanent external biliary catheter

Percutaneous biliary drainage is commonly performed procedure after failure of ERCP in patients with biliary obstruction. Failure to internalization can lead to permanent external catheter. In the present case, problem of external biliary catheter was solved with hepaticocholecystogastrostomy. Guidewire from the external drain site could not be passed across the stricture, instead it was entering in the gall bladder. This was used as an opportunity to internalize the catheter. First EUS guided cholecystogastrostomy was performed, followed by placement of stent between right biliary system and the stomach, through the cholecystogastrostomy stent. This led to drainage of right biliary system into the stomach, and the external catheter could be removed.

© 2020. Society of Gastrointestinal Endoscopy of India. This is an open access article published by Thieme under the terms of the Creative Commons Attribution-NonDerivative-NonCommercial-License, permitting copying and reproduction so long as the original work is given appropriate credit. Contents may not be used for commercial purposes, or adapted, remixed, transformed or built upon. (<https://creativecommons.org/licenses/by-nc-nd/4.0/>) External biliary drainage, a salvage procedure after failure of endoscopic retrograde cholangiopancreatography (ERCP), is associated with risk of permanent external biliary catheter. Permanent external biliary catheter is a troublesome situation and leads to deterioration in quality of life. A 70-year-old male presented with pruritus and jaundice. Imaging was suggestive of obstruction due to mass lesion at liver hilum, suggesting diagnosis of cholangiocarcinoma. During ERCP, wire could not be negotiated across the stricture; hence, rescue percutaneous transluminal biliary drainage (PTBD) was done. PTBD catheter could not be internalized because of non-negotiable stricture. As the

guidewire from the PTBD site was repeatedly entering the gall bladder, hepaticocholecystogastrostomy was performed to internalize the PTBD catheter. PTBD catheter was first passed into collapsed gall bladder lumen, followed by saline infusion, leading to adequate distension of gall bladder (▶ Fig. 1a). Endoscopic ultrasound (EUS)-guided cholecystogastrostomy was done using 15 mm × 10 mm lumen-apposing stent (Hot axios, Boston scientific, Marlborough, USA) (▶ Fig. 1b); through the metal stent, 10Fr, 5 cm double pigtail plastic stent (C-Flex, Boston Scientific, Spencer, USA) was placed. Next day, from the PTBD site, guidewire was negotiated from right hepatic duct (RHD), across the gall bladder, through the cholecystogastrostomy stent into the gastric lumen (▶ Fig. 2a), followed by self-expandable metallic stent (SEMS) placement (10 mm, 8 cm, Boston Scientific, Natick, MA, USA) (▶ Fig. 2b) through the transhepatic route, connecting RHD to gastric lumen. PTBD catheter was removed next day, and further clinical course was uneventful. Failure to internalize

published online
May 11, 2020

DOI <https://doi.org/10.1055/s-0040-1718861>
ISSN 0976-5042.

©2020. Society of Gastrointestinal Endoscopy of India.

This is an open access article published by Thieme under the terms of the Creative Commons Attribution-NonDerivative-NonCommercial-License, permitting copying and reproduction so long as the original work is given appropriate credit. Contents may not be used for commercial purposes, or adapted, remixed, transformed or built upon. (<https://creativecommons.org/licenses/by-nc-nd/4.0/>).

Thieme Medical and Scientific Publishers Pvt. Ltd. A-12, 2nd Floor, Sector 2, Noida-201301 UP, India

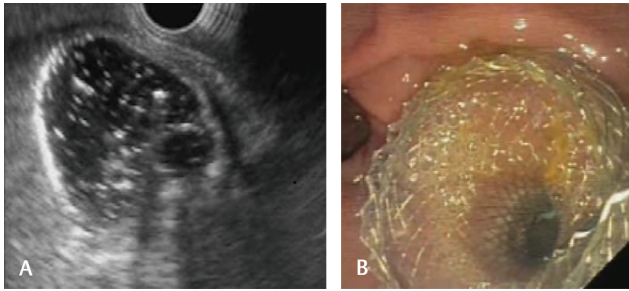


Fig. 1 (a) Transgastric endoscopic ultrasound showing distended gall bladder; fluid was injected through percutaneous transluminal biliary drainage (PTBD) catheter to distend the gall bladder. (b) Cholecystogastrostomy; metal stent placed between gall bladder and gastric antrum.

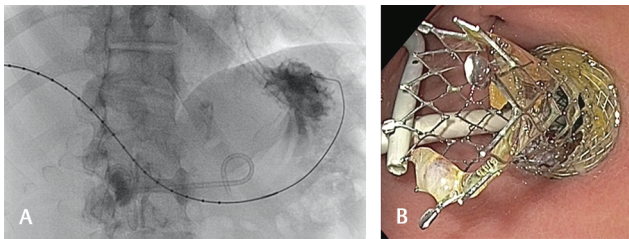


Fig. 2 (a) Guidewire placed across the PTBD site through the gall bladder in gastric lumen. Double pigtail stent across the cholecystogastrostomy metal stent can also be seen. (b) Biliary self-expandable metallic stent (SEMS) placed through the percutaneous transluminal biliary drainage (PTBD) site. Internal end of the stent can be seen in the gastric lumen; biliary stent is surrounded by cholecystogastrostomy stent. Wider stent is cholecystogastrostomy site, lumen-apposing stent.

the catheter is a common problem with PTBD.^{1,2} Various techniques³ have been used to internalize the external

catheter. Law et al³ reported a case where EUS-guided hepaticogastrostomy was performed to internalize the left-sided PTBD catheter. In the present case, PTBD was done on right biliary system; hence, EUS guided hepaticogastrostomy was not possible. As the guidewire from the PTBD site

Vikas Singla	Writing the manuscript
Ajit Kumar Yadav	Collection of all the images and writing of manuscript
Anil Arora	Designing the work and writing the manuscript
Arun Gupta	Revision of manuscript

was entering in gall bladder lumen, this was used as an opportunity to internalize the external biliary catheter.

Authors Contribution

Conflicts of Interest

None declared.

References

- 1 Laméris JS, Stoker J, Nijls HG, et al. Malignant biliary obstruction: percutaneous use of self-expandable stents. *Radiology* 1991;179(3):703-707
- 2 Piñol V, Castells A, Bordas JM, et al. Percutaneous self-expanding metal stents versus endoscopic polyethylene endoprotheses for treating malignant biliary obstruction: randomized clinical trial. *Radiology* 2002;225(1):27-34
- 3 Law R, Sanchez-Ocana Hernandez R, de la Serna-Higuera C, Perez-Miranda M. EUS-guided biliary drainage for internalization of percutaneous transhepatic biliary drainage. *VideoGIE* 2017;2(11):301-302