

Image of the Month: Enterocolitis Following a Pull-through for Total Colonic Hirschsprung Disease in a 2-Year-Old Boy

Anisha Apte¹ Elise McKenna² Marc A. Levitt^{1,2,3}

¹Department of Surgery, The George Washington University School of Medicine and Health Sciences, Washington, District of Columbia, United States

²Department of General and Thoracic Surgery, Children's National Medical Center, Washington, District of Columbia, United States

³Division of Colorectal and Pelvic Reconstruction Surgery, Children's National Medical Center, Washington, District of Columbia, United States

Address for correspondence Anisha Apte, MD, Department of Surgery, The George Washington University School of Medicine and Health Sciences, 2300 I Street NW 718, Washington, DC 20037, United States (e-mail: avapte@gwu.edu).

Eur J Pediatr Surg Rep 2020;8:e102–e104.

Abstract

We present a case of a 2-year-old boy with total colonic Hirschsprung disease (HD) who underwent an ileostomy as a newborn, and then colectomy and pull-through at 10 months of age. Since then he has presented four times with enterocolitis. The case is presented with a focus on evaluating patients with HD who present with obstructive symptoms following corrective surgery. A key image is presented along with questions formatted as a quiz to guide readers through critically evaluating the case.

Keywords

- ▶ Hirschsprung disease
- ▶ enterocolitis
- ▶ pull-through

New Insights and the Importance for the Pediatric Surgeon

Complications after a pull-through procedure vary depending on the type of operation done, and may cause obstructive symptoms, including enteritis. All patients presenting with obstructive symptoms after a pull-through procedure should be evaluated with a contrast enema and an examination under anesthesia.

Case Report

You are presented with a 2-year-old boy with a history of Hirschsprung disease (HD) who has previously undergone a newborn ileostomy, and then a colectomy and pull-through at 10 months of age, and has subsequently had four episodes of enterocolitis. You review a contrast enema study that was completed after the patient recovered from the enterocolitis (–Fig. 1).

Discussion

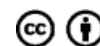
Hirschsprung associated enterocolitis (HAEC) is a feared complication in patients with HD, which typically presents as abdominal distension, fever, and diarrhea.¹ It can occur both prior to and after HD surgery and can develop when there is stasis, bacterial overgrowth, and bacterial translocation. Although the exact physiology of HAEC is unknown, causes for obstruction should be routinely evaluated in

received
May 29, 2020
accepted after revision
August 18, 2020

DOI <https://doi.org/10.1055/s-0040-1721050>.
ISSN 2194-7619.

© 2020 Georg Thieme Verlag KG
Stuttgart · New York

License terms



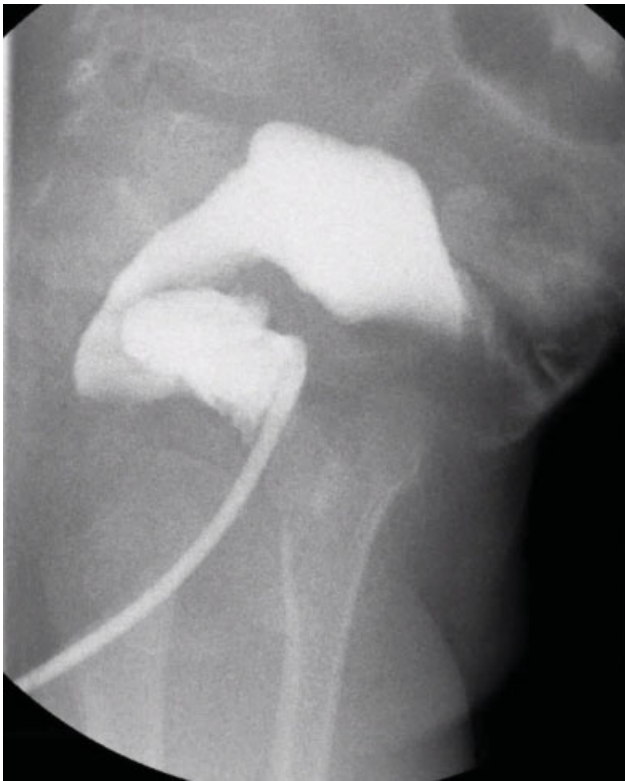


Fig. 1 A contrast enema study.

patients who have undergone corrective surgery and thereafter have recurrent HAEC.

Obstructive symptoms in HD patients post pull-through have been reported between 8 and 30% postoperatively, and HAEC has been reported between 25 and 37%.² There are five potential explanations for persistent obstructive symptoms after pull-through:

- Mechanical obstruction
- Aganglionosis/transition zone pull-through
- Internal sphincter achalasia (absent rectoanal inhibitory reflex [rair] causing obstructive symptoms)
- Motility disorder
- Functional megacolon³

Initial evaluation with a contrast enema and an examination under anesthesia can help identify the presence of a mechanical obstruction.^{1,4} The contrast study provides the answer to the anatomic problem with this case's pull-through. It is likely that the recurrent enterocolitis episodes are due to mechanical obstruction caused by a Duhamel spur. We will discuss the Duhamel spur in addition to the other common causes of mechanical obstruction.

In the case of this 2-year-old boy, the contrast enema shows what appears to be his rectal pouch compressing the bowel just proximal to it (→Fig. 2). At 10 months of age, this boy underwent colectomy and ileo-Duhamel pull-through; however, the Duhamel pouch and pulled-through ileum were not adequately united into a single lumen, leading to a Duhamel spur. Accumulation of stool in the pouch eventually causes compression and obstruction of the ileum, lead-

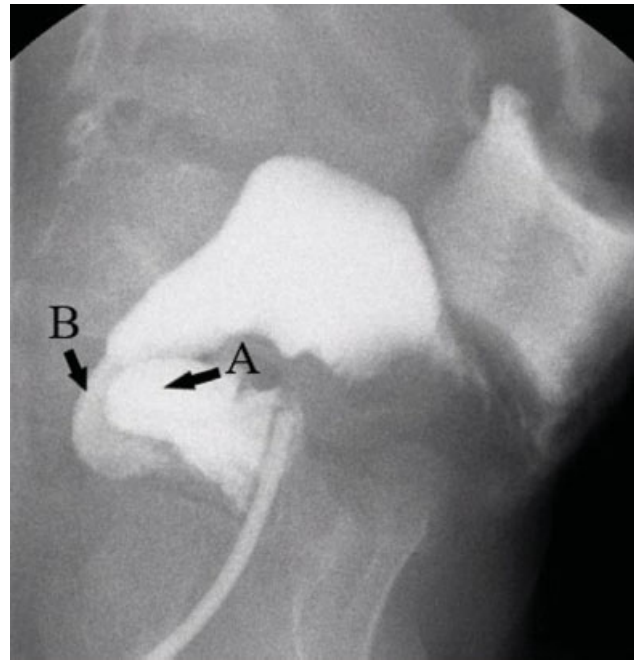


Fig. 2 Contrast enema study showing Duhamel spur. (A) Aganglionic pouch. (B) Ileum pull-through segment.

ing to stasis and recurrent enterocolitis. The treatment is to remove the spur. This can be done with an endovascular stapler placed transanally. In this case, the staple line was extended, thus removing the spur, and the patient began to stool better and has not had another episode of enterocolitis. If this maneuver is not possible or does not improve symptoms, then resection of the pouch and a redo operation with conversion to ileo-anal anastomosis is in order.^{3,5}

Other mechanical issues that can be wrong with an HD pull-through include an obstructing seromuscular cuff, an anastomotic stricture, and a twist of the pull-through.⁶ An obstructing seromuscular cuff is a complication from a Soave procedure and occurs when the residual aganglionic sleeve of the intentionally preserved muscular layer causes narrowing around the pull-through. This is thought to occur due to a constant contracted state of the aganglionic muscle⁷ and may occur if the cuff is not split, is not split adequately, or rolls up. To reduce the occurrence of this, many surgeons who perform the Soave pull-through have modified it so that the amount of residual cuff is limited to just 1 to 2 cm from the beginning of their dissection.⁷ One could affectionately refer to this modification as a "Soave-son" as it is approaching the Swenson technique. A long obstructing cuff can sometimes be treated with intraperitoneal division of the obstructing cuff using a laparoscopic approach.⁶ Such an approach is most relevant for very long cuffs, or cuffs that were created during a transabdominal Soave procedure, rather than one done transanally. A redo transanal pull-through with removal of the muscular cuff and any proximally dilated colon is also an effective strategy.⁷ In the case of anastomotic stricture, these can usually be addressed with serial dilations although if unsuccessful, resection, and redo pull-through may also be required.³ A

twisted pull-through requires a redo. In addition to mechanical problems with a pull-through, the distal aspect may be in transition zone which leads to obstructive symptoms and requires a reoperation.⁸

If no anatomic or pathologic problem is identified, a nonrelaxing motility disorder—even with an anatomically and pathologically correct pull-through—is a rare occurrence and is best evaluated by colonic manometry. A functional megacolon should respond to laxative therapy.

Conclusion

Mechanical obstruction is common after a pull-through procedure in patients with HD. An anatomic or pathologic cause for obstruction can lead to recurrent enterocolitis, as well as other obstructive symptoms such as chronic abdominal distension and failure to thrive. These patients and should be evaluated with a contrast enema and an examination under anesthesia. It is important for the surgeon to recognize that different complications exist depending on the pull-through procedure that was initially performed and warrant different surgical approaches in management. Although some less invasive techniques exist to address these issues, patients may require a redo of their pull-through to resolve the obstructive symptoms.

Conflict of Interest

None declared.

References

- 1 Gosain A, Frykman PK, Cowles RA, et al; American Pediatric Surgical Association Hirschsprung Disease Interest Group. Guidelines for the diagnosis and management of Hirschsprung-associated enterocolitis. *Pediatr Surg Int* 2017;33(05):517–521
- 2 Soh HJ, Nataraja RM, Pacilli M. Prevention and management of recurrent postoperative Hirschsprung's disease obstructive symptoms and enterocolitis: systematic review and meta-analysis. *J Pediatr Surg* 2018;53(12):2423–2429
- 3 Langer JC, Rollins MD, Levitt M, et al; American Pediatric Surgical Association Hirschsprung Disease Interest Group. Guidelines for the management of postoperative obstructive symptoms in children with Hirschsprung disease. *Pediatr Surg Int* 2017;33(05):523–526
- 4 Levitt MA, Dickie B, Peña A. Evaluation and treatment of the patient with Hirschsprung disease who is not doing well after a pull-through procedure. *Semin Pediatr Surg* 2010;19(02):146–153
- 5 Chatoorgoon K, Pena A, Lawal TA, Levitt M. The problematic Duhamel pouch in Hirschsprung's disease: manifestations and treatment. *Eur J Pediatr Surg* 2011;21(06):366–369
- 6 Elsherbeny M, Abdelhay S. Obstructive complications after pull-through for Hirschsprung's disease: different causes and tailored management. *Ann Pediatr Surg* 2019;15:2
- 7 Dickie BH, Webb KM, Eradi B, Levitt MA. The problematic Soave cuff in Hirschsprung disease: manifestations and treatment. *J Pediatr Surg* 2014;49(01):77–80, discussion 80–81
- 8 Lawal TA, Chatoorgoon K, Collins MH, Coe A, Peña A, Levitt MA. Redo pull-through in Hirschsprung's [corrected] disease for obstructive symptoms due to residual aganglionosis and transition zone bowel. [published correction appears in *J Pediatr Surg*. 2011 Apr;46(4):791] *J Pediatr Surg* 2011;46(02):342–347