

Upper Gastrointestinal Bleeding From Leukemic Gastric Implants

J. Nackley II, J. Barthel, D. Coppola
Moffitt Cancer Center, University
of South Florida, Tampa, Florida, USA

Corresponding Author

J. Nackley II, M.D.
University of South Florida
Office of James S. Barthel, M.D.
Moffitt Cancer Center
12902 Magnolia Drive
Tampa, FL 33612
USA
Fax: + 1-813-979-7229
E-mail: barthejs@moffitt.usf.edu

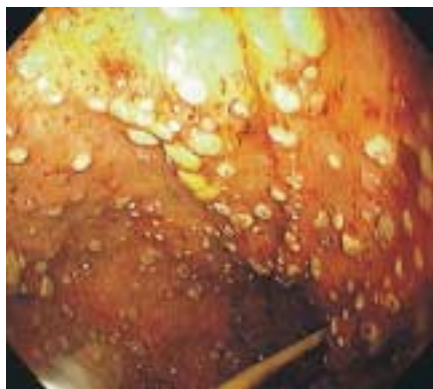


Figure 1 A 23-year-old woman admitted with an acute myelogenous leukemic blast crisis, developed thrombocytopenia, melena, and anemia. An esophagogastroduodenoscopy was performed, revealing an erythematous, friable mucosa with multiple white plaques lining the entire gastric mucosa. A small feeding tube was in place

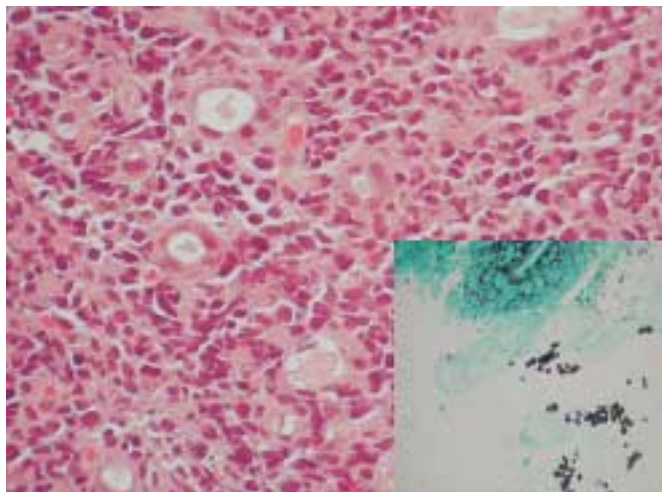


Figure 2 The stomach biopsy revealed fragments of ulcerated gastric mucosa involved by a marked leukemic infiltrate which was focally replacing the gastric pits. A special stain for fungi (GMS) revealed fungal forms within the fibrinopurulent exudate (hematoxylin and eosin $\times 250$; GMS stain $\times 100$)