

# High-Magnification Chromoscopic Ileoscopy in Familial Adenomatous Polyposis: Detection In Vivo of Colonic Metaplasia and Microadenoma Formation

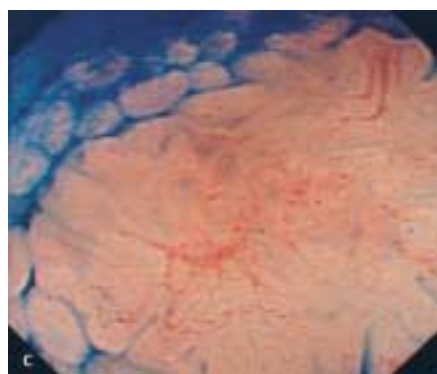
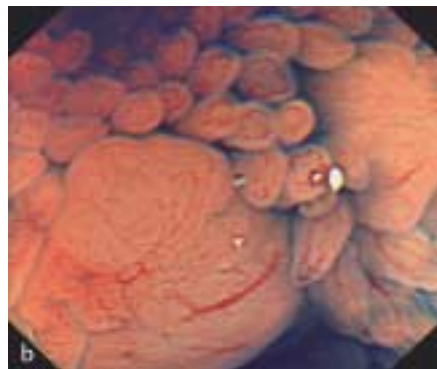
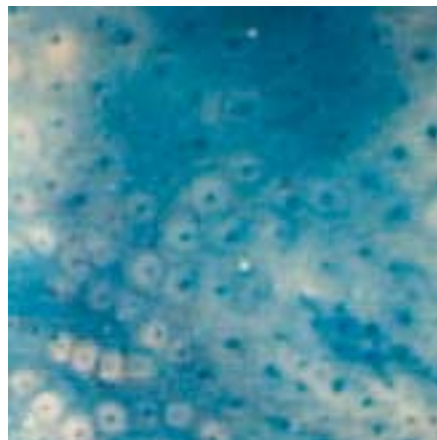


Figure 1 Ileal microadenomas with morphological features similar to colorectal aberrant crypt foci occur in the ileum of patients with familial adenomatous polyposis (FAP). Ileal microadenomas may occur secondarily to ileal-colonic metaplasia. High-magnification chromoscopic endoscopy permits in vivo observation of this phenomenon. These views were obtained during a 50-cm ileoscopy of a patient with sporadic FAP. **a** Terminal-ileal views at 5 cm from the ileocaecal valve using 0.05% indigo carmine. The villous pattern is replaced with a Kudo type I crypt typical of columnar epithelium (magnification  $\times 100$ ). **b** and **c** View at 10 cm from the ileocaecal valve using 0.05% indigo carmine. Diminutive protrusions cluster among the normal "round" villous network. The protruded areas demonstrate small crypt openings (magnification  $\times 100$ ).

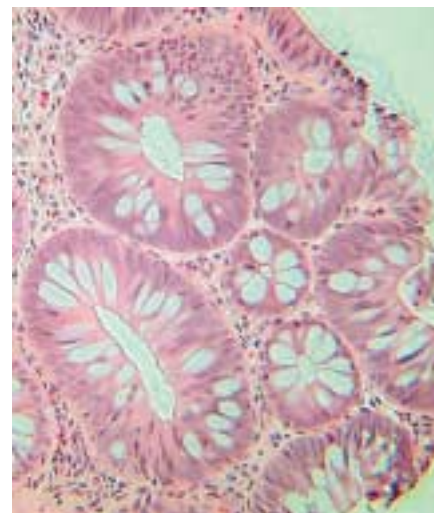


Figure 2 Microadenoma of Figure 1 **c** at histopathological examination (haematoxylin & eosin stain).

**D. P. Hurlstone<sup>1</sup>, S. S. Cross<sup>2</sup>, A. J. Lobo<sup>1</sup>**

<sup>1</sup> Department of Gastroenterology, Royal Hallamshire Hospital, Sheffield, UK

<sup>2</sup> Academic Unit of Pathology, Section of Oncology and Pathology, Division of Genomic Medicine, University of Sheffield Medical School, Sheffield, UK

## Corresponding Author

**D. P. Hurlstone, M. B. Ch.B.**

Room P14/Ward P2  
Royal Hallamshire Hospital  
Sheffield S10  
United Kingdom

Fax: +44-114-2712692

E-mail: [dphurlstone@doctors.org.uk](mailto:dphurlstone@doctors.org.uk)