

Multiple Confluent Telangiectatic Lesions Following Radiation Treatment for Prostate Cancer

Y. Komuro, T. Watanabe, H. Nagawa
Department of Surgical Oncology, Faculty of Medicine, University of Tokyo, Tokyo, Japan

Corresponding Author

Y. Komuro, M.D.
Department of Surgical Oncology
Faculty of Medicine
University of Tokyo
7-3-1 Hongo
Bunkyo-ku
Tokyo 113-8655
Japan
Fax: +81-3-38116822
E-mail: komuro@kt.rim.or.jp

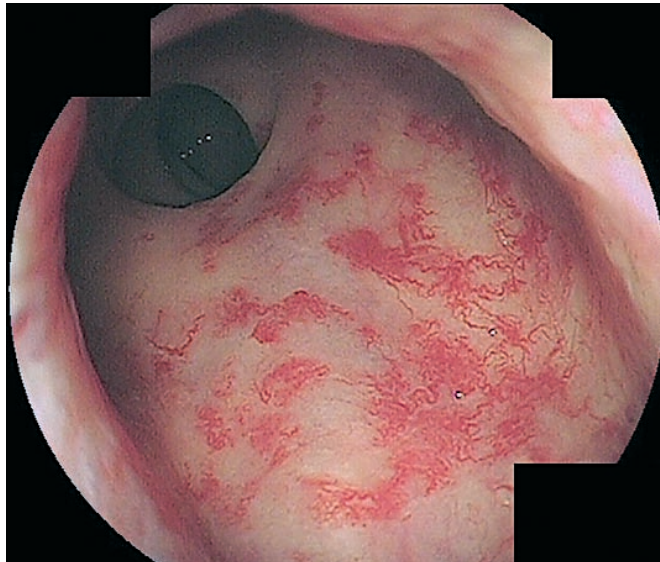


Figure 1 Endoscopic view of chronic radiation-induced proctitis. The anterior rectal mucosa appeared edematous and friable with multiple confluent neovascular telangiectatic lesions. The patient had been treated 3 years previously for prostate cancer, with a total dose of 60 Gy.