

M. Koda et al. Expression of the Insulin-like Growth Factor-I Receptor in Primary Breast Cancer and Lymph Node Metastases: Correlations with Estrogen Receptors  $\alpha$  and  $\beta$ . *Horm Metab Res* 2003; 35: 794–801 and Erratum *Horm Metab Res* 2004; 36: 73

Figure 1 was printed in black and white but should have been printed in colours as shown below:

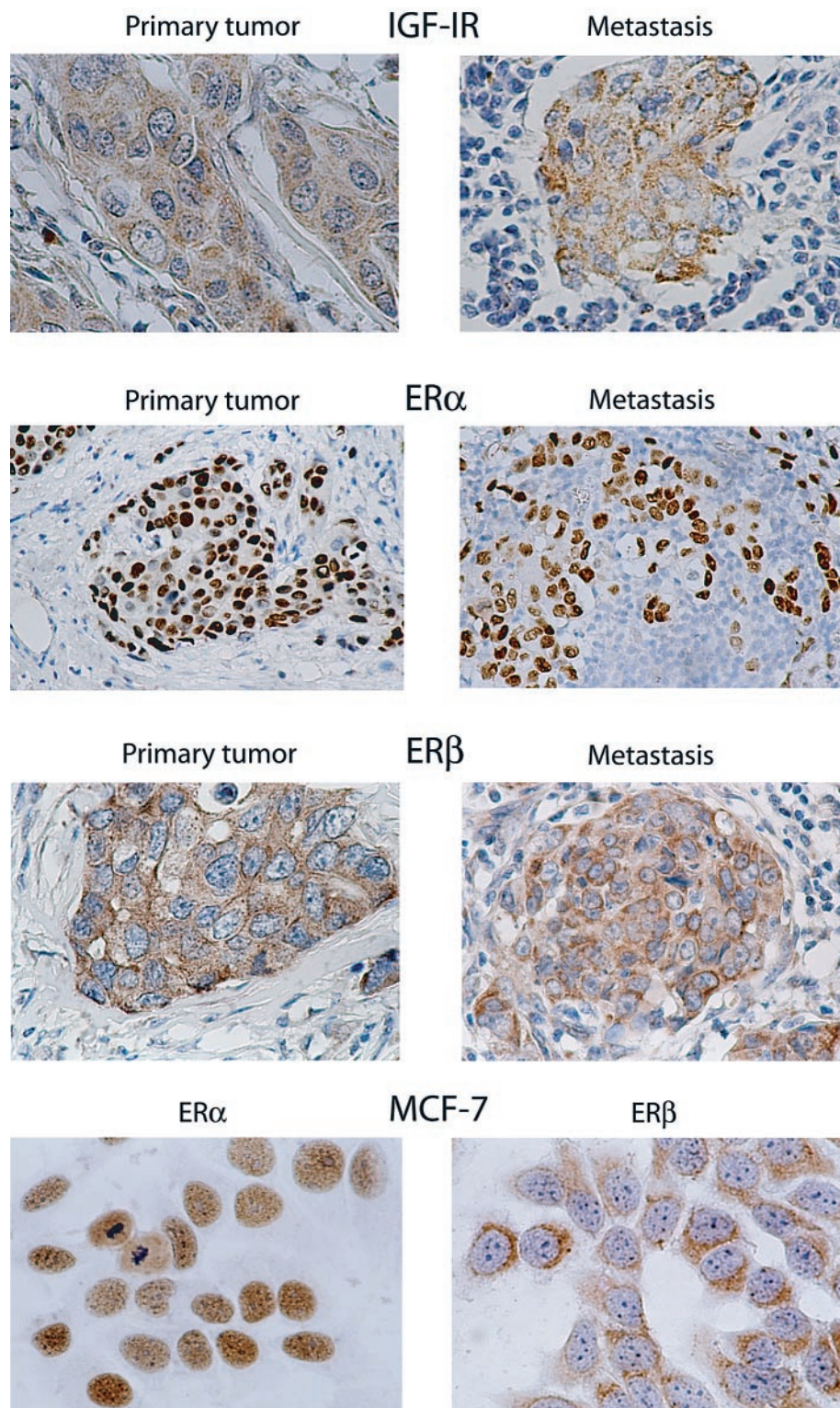


Fig. 1 Immunohistochemical demonstration of IGF-IR, ER $\alpha$ , and ER $\beta$  in breast cancer cells. IGF-IR, ER $\alpha$ , and ER $\beta$  were detected in primary and metastatic tumors. In addition, the expression and localization of ER $\alpha$  and ER $\beta$  was analyzed in MCF-7 cells. The analysis was performed as described in Materials and Methods. The original magnification for ER $\alpha$  staining in primary and metastatic tumors was 200  $\times$ , in all other cases, the magnification was 400  $\times$ .