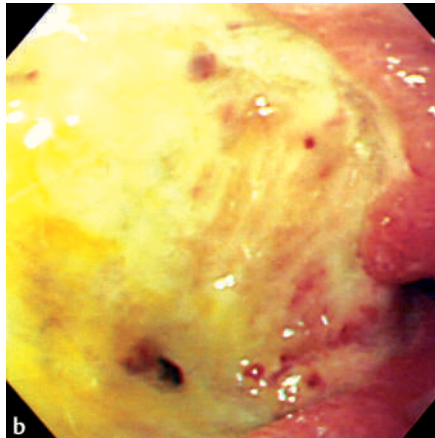
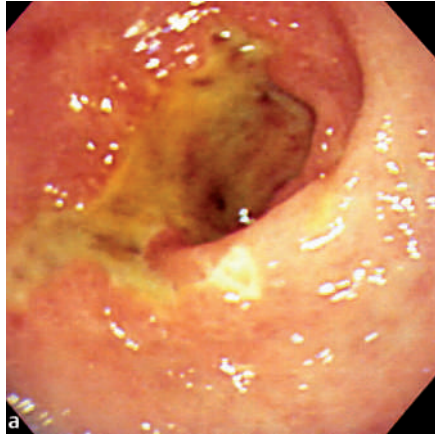
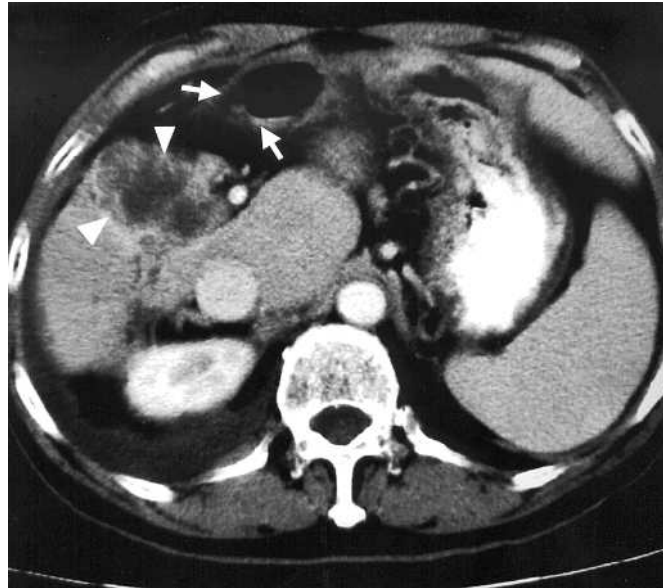


# Acute gastric ulcer associated with gamma knife treatment (conformal stereotactic radiotherapy) of recurrent hepatocellular carcinoma



**Figure 1** A 73-year-old man received one course of gamma knife radiotherapy (conformal stereotactic radiotherapy) for recurrent hepatocellular carcinoma, with a total dose of 45 Gy given within 1 month. Three days after finishing radiotherapy, he developed tarry stools. At esophagogastroduodenoscopy, he was found to have a large gastric ulcer on the lesser curvature and the anterior wall of the antrum, which had an irregular shape and margins (a) and several exposed vessels (b).



**Figure 2** Abdominal computed tomography showed that there was a close anatomic relationship between the gastric antrum (arrows) and the hepatocellular carcinoma in the residual left hepatic lobe (arrowheads).

**C. Y. Chang<sup>1</sup>, C. H. Tu<sup>1</sup>, T. S. Chiang<sup>1</sup>,  
H. P. Wang<sup>2</sup>**

<sup>1</sup> Department of Internal Medicine, E-DA Hospital, Kaohsiung, Taiwan  
<sup>2</sup> Department of Emergency Medicine, National Taiwan University Hospital and National Taiwan University College of Medicine, Taipei, Taiwan

Endoscopy\_UCTN\_Code\_CCL\_1AB\_2AD\_3AC

## Corresponding Author

**H. P. Wang M.D.**

Department of Emergency Medicine  
National Taiwan University Hospital  
No. 7 Chung-Shan South Road  
Taipei  
Taiwan

Fax: +886-2-23947899

E-mail: whp@ha.mc.ntu.edu.tw