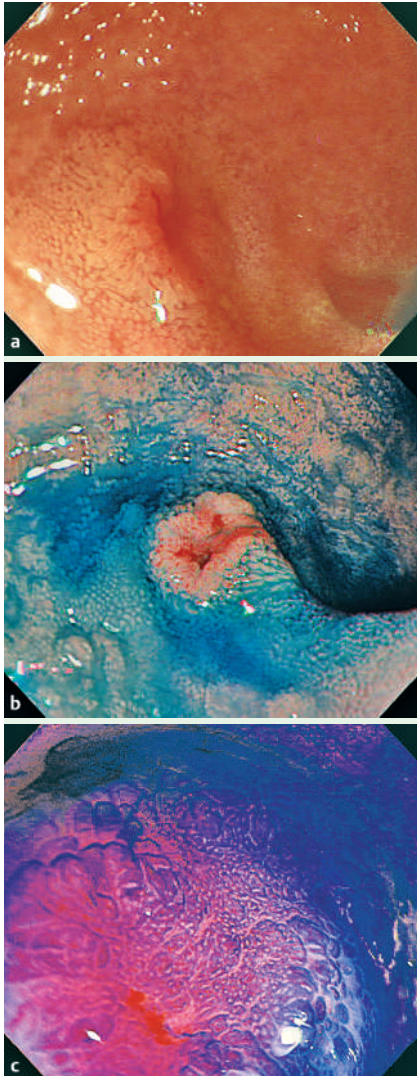


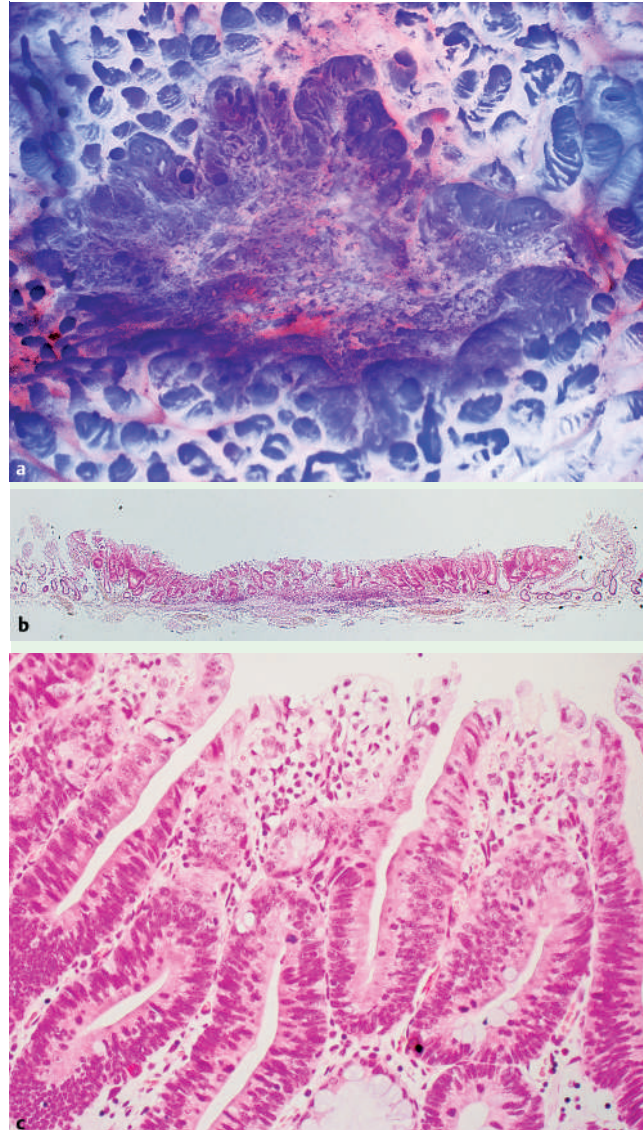
## Depressed-type early adenocarcinoma of the terminal ileum



**Fig. 1** **a** Conventional endoscopic view showed a shallow depressed lesion in the terminal ileum. **b** Chromoendoscopic view with indigo carmine dye showed a star-shaped demarcation line of the depressed lesion. **c** Magnifying endoscopic view with crystal violet staining showed regular arrangement of small round and tubular pit patterns.

### Video 1

Video clip shows conventional and magnifying endoscopic features of depressed type adenocarcinoma of the terminal ileum, and procedure of endoscopic mucosal resection.



**Fig. 2** **a** Stereomicroscopic view showed a star-shaped depressed lesion with marginal elevation. **b** Histopathologic cross section revealed an intramucosal depressed neoplasm with lamina propria invasion (H & E, original magnification  $\times 10$ ). **c** High-power view revealed well-differentiated adenocarcinoma (H&E, original magnification  $\times 200$ ).

Depressed-type neoplasm of the jejunum and the ileum has not yet been recognized. To the best of our knowledge, this is the first case of depressed-type primary adenocarcinoma of the ileum. A 62-year-old man underwent total colonoscopy. A small reddish depressed lesion with marginal elevation, 5 mm in diameter, was detected in the terminal ileum (► Fig. 1 a). A chromoendoscopic view with indigo carmine dye showed a star-shaped demarcation line of the depressed lesion (► Fig. 1 b). A magnifying endoscopic view with crystal violet stain-

ing showed small round and tubular pit patterns (► Fig. 1 c). With these findings, we diagnosed intramucosal neoplasm. An endoscopic mucosal resection was performed, and the resected lesion measured 5  $\times$  4 mm. Stereomicroscopic view showed a star-shaped, depressed lesion with marginal elevation (► Fig. 2 a). A histopathologic cross section revealed an intramucosal depressed neoplasm with lamina propria invasion (► Fig. 2 b). A high-power view revealed well-differentiated adenocarcinoma (► Fig. 2 c). Cancer-cell nuclei were positive in p53 im-

munohistochemical staining. A polymerase chain reaction-single strand conformation polymorphism (PCR-SSCP) study of p53 genes revealed some mutations of exon 6, 7, and 8. K-ras codon 12 mutations (PCR-restriction fragment length polymorphism [RFLP]) were not observed. Morphological appearance was classified as type 0-IIc in the Paris endoscopic classification [1], and mimicked a depressed-type colorectal cancer advocated by Kudo [2]. It had been reported that K-ras mutations were absent in depressed-type colorectal cancers [3,4]. It was reported that rates of p53 positivity in depressed-type colorectal neoplastic lesions were higher in carcinomas and high-grade neoplasms than in low-grade neoplasms [5]. Therefore the characterizations of the genetic change, such as p53 and K-ras, were mimicking depressed-type colorectal cancer.

### Acknowledgement



Our deep appreciation goes to Professor T. Fujimori, PhD, and S. Fujii, PhD, from the Department of Pathology of Dokkyo University, for their cooperation on pathological diagnosis.

Endoscopy\_UCTN\_Code\_CCL\_1AC\_2AC

**K. Hotta, A. Tomori, T. Oyama, Y. Miyata**  
Department of Gastroenterology, Saku Central Hospital, Nagano, Japan

### References

- 1 The Paris endoscopic classification of superficial neoplastic lesions. Esophagus, stomach and colon: November 30 to December 1, 2002. *Gastrointest Endosc* 2003; 58: S3–S43
- 2 Kudo S. Endoscopic mucosal resection of flat and depressed type of early colorectal cancer. *Endoscopy* 1993; 25: 455–461
- 3 Saito K, Arai K, Mori M. p53 overexpression and K-ras codon 12 mutations in submucosal invasive depressed-type colorectal cancer. *Oncol Rep* 2000; 7: 741–744
- 4 Kaneko K, Kurahashi T, Makino R *et al*. Pathological features and genetic alterations in colorectal carcinomas with characteristics of nonpolypoid growth. *Br J Cancer* 2004; 91: 312–318
- 5 Hayakawa M, Shimokawa K, Kusugami K *et al*. Clinicopathological features of superficial depressed-type colorectal neoplastic lesions. *Am J Gastroenterol* 1999; 94: 944–949

### Bibliography

DOI 10.1055/s-2007-966145

*Endoscopy* 2007; 39: E231–E232

© Georg Thieme Verlag KG Stuttgart · New York · ISSN 0013-726X

### Corresponding author

**K. Hotta, MD**

Department of Gastroenterology

Saku Central Hospital

197 Usuda

Saku, Nagano 384-0301

Japan

Fax: +81-267-82-3025

kinichi1@janis.or.jp