

# Case report: Pulmonary syphilis mimicking pulmonary hematogenous metastases on chest CT and integrated PET/CT

Hyung Jun Kim, Hyun Ju Seon, Hyo Hyun Shin, Yoo-Duk Choi<sup>1</sup>

Departments of Radiology and <sup>1</sup>Pathology, Chonnam National University Hospital, Gwangju, South Korea

**Correspondence:** Dr. Hyun Ju Seon, Department of Radiology, Chonnam National University Hospital, #8 Hak-dong, Dong-gu, Gwangju, 501-757, South Korea. E-mail: sunaura@hanmail.net

## Abstract

We report a case of syphilis with pulmonary involvement. Chest CT scan and <sup>18</sup>F-fluorodeoxyglucose (FDG) PET/CT showed multiple pulmonary nodules mimicking pulmonary hematogenous metastases. This was confirmed on follow-up images that showed therapeutic response to penicillin.

**Key words:** Chest CT; <sup>18</sup>F FDG PET-CT; pulmonary syphilis

## Introduction

Syphilis is a sexually transmitted disease caused by a spirochete named *Treponema pallidum*, which can damage the heart, aorta, brain, eyes, and bones when inadequately treated.<sup>[1-3]</sup> A few cases of pulmonary syphilis have been reported with varying imaging findings.<sup>[4-6]</sup> We would like to describe a case of pulmonary syphilis mimicking pulmonary hematogenous metastases on initial noninvasive diagnostic work-up.

## Case Report

A 59-year-old woman visited our hospital, suffering from right upper quadrant abdominal pain for 9 h. The patient also complained of 4 kg weight loss during the last month and a 1-week history of cough and sputum. Physical

examination showed tenderness and rebound tenderness in the right upper quadrant of the abdomen and palpable lymphadenopathy in both inguinal areas. There was no demonstrable skin rash or genital ulcer.

An initial contrast-enhanced abdominal CT scan showed several gallbladder stones and diffuse wall thickening of the gallbladder, especially with irregular thickening in its neck [Figure 1A], suggesting possible malignancy. Several enlarged lymph nodes with relatively preserved fatty hilum were seen in both inguinal regions [Figure 1B], along both iliac vessels, and in the portocaval space (not shown). Multiple pulmonary nodules were noted as well. A subsequent chest CT scan revealed multiple, small, well-defined nodules (<1 cm in diameter), in the right upper lobe (not shown) and both lower lobes [Figure 1C], suggesting possible metastatic disease.

An <sup>18</sup>F FDG PET/CT scan showed hypermetabolic enlarged nodes (standardized uptake value – SUV of 10) in both inguinal regions [Figure 2A], along both iliac vessels and the portocaval space (not shown). However, there was no significant hypermetabolism (maximum SUV: 1.2) in the small pulmonary nodules [Figure 2B].

A preoperative laboratory screening showed the rapid plasma reagin (RPR) and venereal disease research

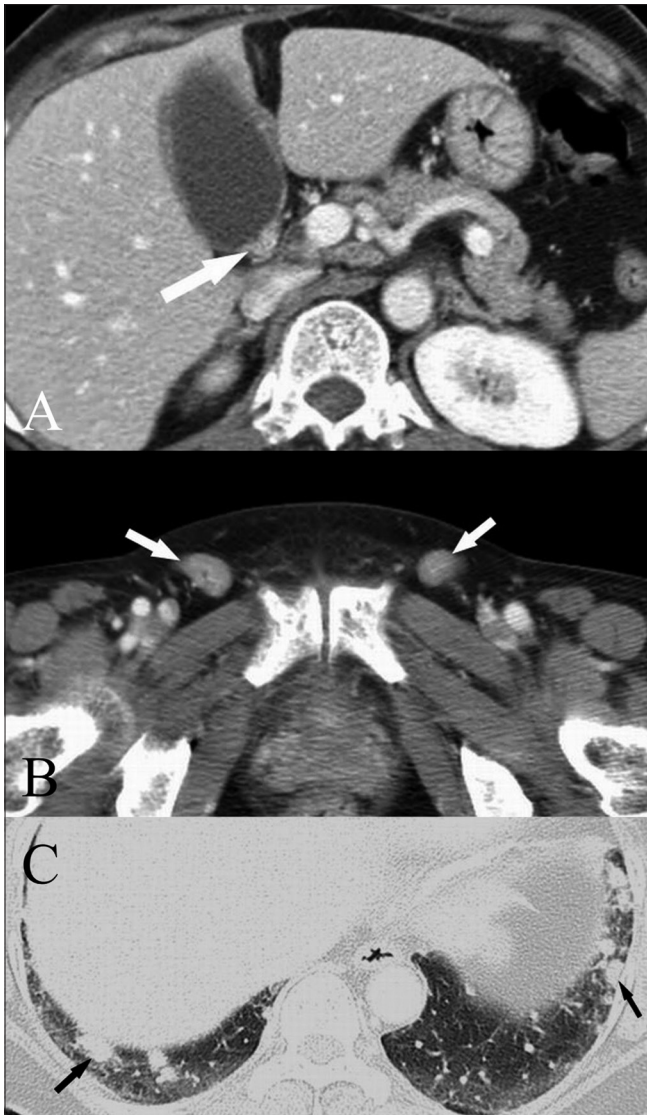
### Access this article online

#### Quick Response Code:



Website:  
www.ijri.org

DOI:  
10.4103/0971-3026.76052



**Figure 1 (A-C):** Contrast-enhanced CT scan of the abdomen (A) and pelvis (B) shows irregular wall thickening in the neck of the gallbladder (arrow in A), with multiple, enlarged inguinal lymph nodes (arrows in B) showing relatively preserved fatty hila. CT scan of the chest (C) shows multiple, well-defined, small, subcentimetre nodules (arrows), in both lower lobes

laboratory (VDRL) tests to be positive. These were followed by more specific treponemal tests; the *Treponema pallidum* hemagglutination assay (TPHA) (titer, 1:302) was positive and the fluorescent Treponemal antibody absorption (FTA-ABS) test was negative for IgM and positive for IgG. Therefore, a clinical diagnosis of syphilis was made.

There was no evidence of other infection or malignancy in the preoperative image studies, physical examination, and laboratory findings, including sputum examination.

Cholecystectomy and left inguinal lymph node biopsy were performed. The histologic examination of the gallbladder confirmed chronic cholecystitis. The histologic examination

of a left inguinal lymph node specimen showed a negative Warthin Starry silver stain, but revealed hyperplasia of secondary lymphoid follicles and extensive plasma cell proliferation on hematoxylin–eosin stain, suggesting possible syphilis [Figure 3].

Treatment with intramuscular (IM) penicillin G was initiated. After 1 week, PET/CT scan showed a decrease in the FDG uptake (max SUV - 5.2) in the involved lymph nodes [Figure 4A]. Two months after discharge, the patient returned for a follow-up evaluation and a CT scan showed complete disappearance of the pulmonary nodules [Figure 4B] with a further reduction in the size of the involved lymph nodes.

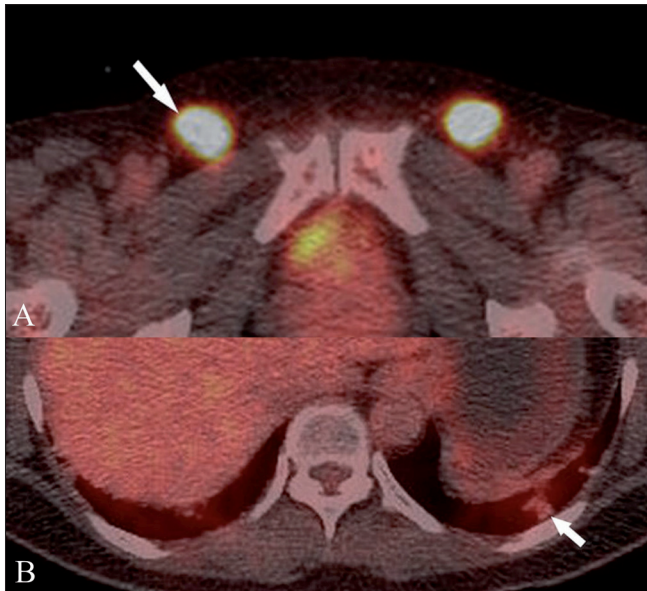
## Discussion

Pulmonary syphilis is very rare. In the preantibiotic period, the prevalence of lung involvement mainly in congenital and tertiary syphilis varied from 1% to 12.5%.<sup>[4,7-9]</sup> However, the prevalence of secondary syphilis has increased substantially during the past years.<sup>[10]</sup> Mucocutaneous manifestations are easily recognized, and occur in 80% of cases. Less commonly, secondary syphilis may present with pulmonary infiltration, acute meningitis, sensorineural hearing loss, iritis, gastropathy, nephritic syndrome, and periostitis.<sup>[1]</sup> Since 1967, there have been 10 case reports of pulmonary involvement in secondary syphilis.<sup>[9]</sup> The clinical criteria proposed by Coleman *et al.*<sup>[4]</sup>

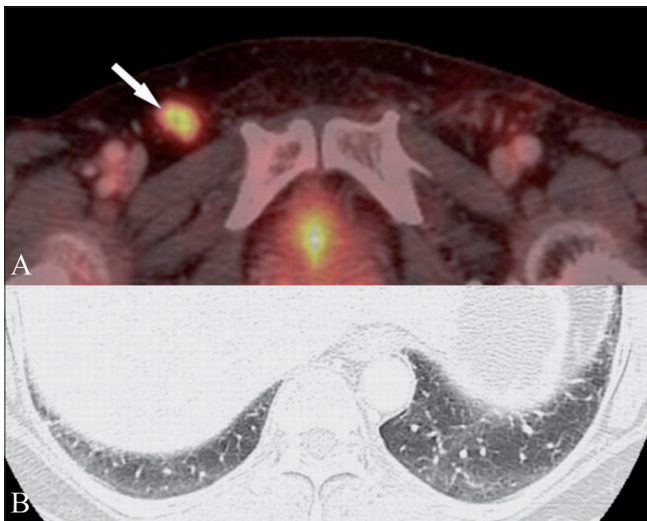
For diagnosing pulmonary syphilis are:

1. historical and physical findings typical of syphilis,
2. serologic test results positive for syphilis,
3. pulmonary involvement seen radiologically with or without associated symptoms or signs,
4. exclusion of other forms of pulmonary disease, when possible, according to findings of serological tests, sputum smears and cultures, and cytological examination of sputum, and
5. response to penicillin of signs found on radiological examination. Clinical and radiological response to penicillin remains the best confirmation of pulmonary syphilis and can be of help in narrowing the differential diagnosis.<sup>[9]</sup>

Radiological presentation described in the English literature includes solitary and multiple pulmonary nodules and infiltrates, occasionally associated with pleural effusion,<sup>[9]</sup> findings that may also be seen in other benign or malignant conditions such as metastases, lymphoma, Kaposi sarcoma, Wegener granulomatosis, sarcoidosis, rheumatoid arthritis, tuberculosis, invasive aspergillosis, histoplasmosis, coccidiomycosis, and septic emboli. To confirm the diagnosis, serologic and biologic tests, bronchoalveolar lavage, and lung biopsy may be useful. Our patient presented with multiple subcentimetre pulmonary



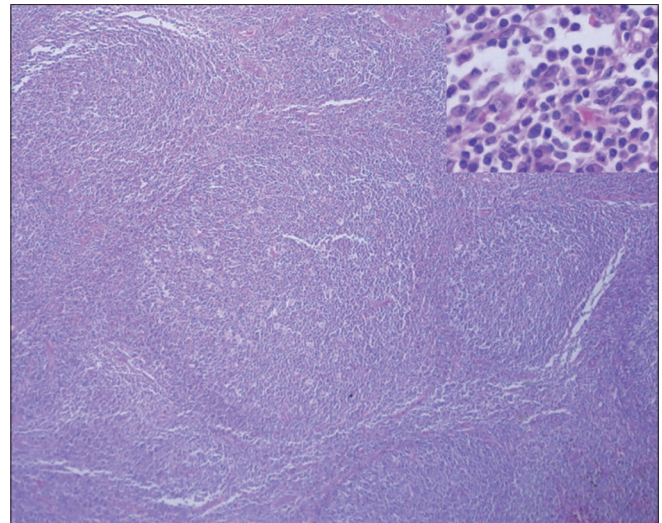
**Figure 2 (A,B):** FDG PET/CT shows increased uptake in the inguinal lymph nodes (arrow in A) with no significant uptake in the lung nodules (arrow in B)



**Figure 4 (A,B):** Follow-up FDG PET/CT (A) after penicillin therapy shows decreased FDG uptake in the right inguinal lymph node (arrow). Follow-up CT scan of the chest (B) obtained 2 months after discharge shows complete disappearance of the pulmonary nodules

nodules, which in the setting of presumed gall-bladder malignancy, suggested possible metastatic disease. The diagnosis was clinched by the virtually complete resolution of the nodules on a follow-up chest CT scan, after adequate penicillin therapy.

FDG-PET assesses increased glucose metabolism in lesions and may show uptake in a large variety of primary lung tumors, metastases as well as in inflammatory diseases such as tuberculosis, fungal infection and sarcoidosis.<sup>[11]</sup> Although the overall sensitivity and specificity of FDG-



**Figure 3:** Histopathology of the inguinal lymph node shows marked hyperplasia of secondary lymphoid follicles and extensive plasma cell proliferation (inset) in the interfollicular areas (H and E,  $\times 20$ )

PET in pulmonary lesions are high, it has a lower accuracy in smaller, subcentimetre lung lesions.<sup>[11,12]</sup> In our patient, there was no uptake in the small nodules, probably due to their small size.

FDG can also accumulate in pelvic lymph nodes affected by inflammatory and neoplastic conditions<sup>[13,14]</sup> and may not be able to differentiate between them.<sup>[15]</sup> Our patient had increased FDG uptake in pelvic nodes with subsequent therapeutic response to penicillin.

In conclusion, given that pulmonary syphilis is rarely encountered, we have demonstrated its appearance on CT scan and PET/CT in a patient where metastatic disease was the initial presumed diagnosis.

## References

1. McPhee SJ. Secondary syphilis: uncommon manifestations of a common disease. *West J Med* 1984;140:35-42.
2. Clark EG, Danbolt N. The Oslo study of the natural course of untreated syphilis: An epidemiologic investigation based on a re-study of the Boeck-Bruusgaard material. *Med Clin North Am* 1964;48:613-23.
3. Pariser H. Infectious syphilis. *Med Clin North Am* 1964;48:625-36.
4. Coleman DL, McPhee SJ, Ross TF, Naughton JL. Secondary syphilis with pulmonary involvement. *West J Med* 1983;138:875-8.
5. Olson AL, Gutman JA, Welsh CH. A 50-year-old man with skin lesions and multiple pulmonary nodules. *Chest* 2004;125:2322-7.
6. Geer LL, Warshauer DM, Delany DJ. Pulmonary nodule in secondary syphilis. *Australas Radiol* 1985;29:240-2.
7. Howard CP. Pulmonary syphilis. *Am J Syphilis* 1924;8:1-33.
8. Carrera JL. A pathologic study of the lungs in one hundred and fifty-two autopsy cases of syphilis. *Am J Syphilis* 1920;4:1-33.
9. David G, Perpoint T, Boibieux A, Pialat JB, Salord H, Devouassoux M, *et al.* Secondary pulmonary syphilis: report of a likely case and literature review. *Clin Infect Dis* 2006;42:11-5.

10. Fenton KA, Lowndes CM. Recent trends in the epidemiology of sexually transmitted infections in the European Union. *Sex Transm Infect* 2004;80:255-63.
11. Imdahl A, Jenkner S, Brink I, Nitzsche E, Stoelben E, Moser E, *et al.* Validation of FDG positron emission tomography for differentiation of unknown pulmonary lesions. *Eur J Cardiothorac Surg* 2001;20:324-9.
12. Gould MK, Maclean CC, Kuschner WG, Rydzak CE, Owens DK. Accuracy of positron emission tomography for diagnosis of pulmonary nodules and mass lesions: a meta-analysis. *JAMA* 2001;285:914-24.
13. Kubota R, Yamada S, Kubota K, Ishiwata K, Tamahashi N, Ido T. Intratumoral distribution of fluorine-18-fluorodeoxyglucose *in vivo*: high accumulation in macrophages and granulation tissues studied by microautoradiography. *J Nucl Med* 1992;33:1972-80.
14. Pruzzo R, Redondo F, Amaral H, Glasinovic E, Caviedes I, Glasinovic JC. Anal and rectal syphilis on F-18 FDG PET/CT. *Clin Nucl Med* 2008;33:809-10.
15. Lin M, Darwish BS, Chu J. Neurosyphilitic gumma on F18-2-fluoro-2-deoxy-D-glucose (FDG) positron emission tomography: an old disease investigated with a new technology. *J Clin Neurosci* 2009;16:410-2.

**Source of Support:** Nil, **Conflict of Interest:** None declared.

## New features on the journal's website

### Optimized content for mobile and hand-held devices

HTML pages have been optimized of mobile and other hand-held devices (such as iPad, Kindle, iPod) for faster browsing speed.

Click on **[Mobile Full text]** from Table of Contents page.

This is simple HTML version for faster download on mobiles (if viewed on desktop, it will be automatically redirected to full HTML version)

### E-Pub for hand-held devices

EPUB is an open e-book standard recommended by The International Digital Publishing Forum which is designed for reflowable content i.e. the text display can be optimized for a particular display device.


Click on **[EPub]** from Table of Contents page.

There are various e-Pub readers such as for Windows: Digital Editions, OS X: Calibre/Bookworm, iPhone/iPod Touch/iPad: Stanza, and Linux: Calibre/Bookworm.

### E-Book for desktop

One can also see the entire issue as printed here in a 'flip book' version on desktops.

Links are available from Current Issue as well as Archives pages.

Click on  View as eBook