

Epidemiological and clinical profile of triple negative breast cancer at a cancer hospital in North India

P. Suresh, Ullas Batra¹,

D. C. Doval¹

Department of Medical Oncology,
Command Hospital (Southern
Command), Pune, Maharashtra,
¹Rajiv Gandhi Cancer Institute and
Research Centre, Sector 5, Rohini,
New Delhi, India

ABSTRACT

Background: Triple negative breast cancer (TNBC) is a recent concept and the burning topic of research today. Various studies have been reported in western literature on TNBCs or the similar group of basal like cancers, all highlighting the poor prognostic features of this molecular subtype in comparison to the other types of breast cancers. However extensive data from India is lacking. The aim of this study was to analyze the epidemiological and clinical profile of TNBCs at our institute. **Materials and Methods:** Data on 171 patients of TNBCs registered at this hospital between 2005 and 2008 and followed up until December 2010 was collected and reviewed for epidemiological and clinical features. **Results:** The median age at presentation was 49 years (22-75 years). Sixty eight patients (40%) had lump in the breast of less than 1 month duration. Fourteen (8%) were nulliparous and 10 (7%) patients had crossed the age of 30 years at first full-term pregnancy, 89 (52%) were pre or peri-menopausal at presentation. Only 8 (5%) patients had a family history of breast or ovarian cancer. One hundred and six (62%) patients were stage II, 26 (15%) stage III, 21 (12%) stage I and 18 (10%) stage IV at presentation. One hundred and twenty eight patients (75%) had early breast cancer eligible for surgery at presentation, 25 (15%) were locally advanced and received neoadjuvant chemotherapy (NACT) and 18 (10%) were found to be metastatic. Modified radical mastectomy was the preferred surgical option by most patients (76%) who underwent upfront surgery in our study. The pathological overall response rates (complete and partial response) after NACT was 75% with complete response rate of 25% and there were no relapses in the complete responders. The median follow-up was 30 months (9-70 months). One hundred and twenty two patients (71%) were alive at last follow-up, 34 (22%) had relapsed, 18 (11%) had died due to progressive disease. Thirty one patients (18%) were lost to follow-up. Most of the relapses were systemic and rarely preceded by local relapses. **Conclusions:** TNBCs are aggressive cancers with high rates of systemic relapses within the first 3 years of presentation. Longer follow-up of these patients is required for more mature data on these cancers.

Key words: *Clinical profile, epidemiology, India, outcomes, triple negative breast cancer*

Address for correspondence:

Dr. P. Suresh,
Department of Medical
Oncology, MDTC, Command
Hospital (Southern Command),
Pune - 411 040, Maharashtra, India.
E-mail: psuresh_n@yahoo.com

INTRODUCTION

Breast cancer is the most common cancer among females in urban India and is rapidly catching up with cervical cancer in rural India.^[1] It has been long recognized that breast cancer is a heterogeneous disease and not a single entity. Gene expression studies using DNA micro arrays

have identified subtypes of breast cancer^[2] that were not apparent using traditional histopathologic methods. Four common subtypes have been identified; two of these are derived from estrogen receptor (ER) negative tumors [basal-like and Human epidermal growth factor receptor-2 (HER-2) positive] and two are derived from ER-positive tumors (luminal A and B). A fifth subtype called the “Normal” has also been described of which the clinical relevance is not clear.

The definition of basal-like breast cancers has been evolving and though there are no universally agreed upon criteria to define it, the panel developed by Nielsen *et al.*^[3] is generally accepted in practice – basal-like cancers are negative for hormone receptors (HRs) and HER-2, in addition to being

Access this article online

Quick Response Code:



Website:
www.ijmpo.org

DOI:
10.4103/0971-5851.116185

positive for cytokeratin (CK) 5/6 or Epidermal growth factor receptor (EGFR). Basal like breast cancers have been found to be more common in younger women of African-American descent, are more aggressive cancers with shorter relapse free survival (RFS), a tendency to visceral rather than bone metastases and a significant likelihood of Breast Cancer (BRCA) susceptibility type-1 mutation.^[4] To date, studies on patients with basal-like breast cancers have been limited by small sample sizes and short follow-up times and have been restricted to western literature. To some extent, this is because the basal-like phenotype is based on immunohistochemical staining of tumor slides using anti-keratin antibodies, and these are not yet in general clinical use. In the clinical setting, it has been found that this “basal-like” category of tumors is composed almost entirely of “triple negative breast cancers” (TNBCs)^[4] (tumors that are negative for ER, progesterone receptor (PR) and HER2), which can be easily identified in the lab by immunohistochemistry (IHC)^[5] and hence has been used as a surrogate for basal-like cancers in many studies all over the world. TNBCs constitute 12-24% of breast cancers^[4,6,7] and have attracted the attention of pathologists and oncologists as an easily recognizable prognostic group of breast cancer with aggressive behavior that commonly lack the benefit of any specific targeted therapy. Reliable data on TNBC in Indian setting is scarce^[8] and hence, we felt the need to study the clinical profile of these cancers in our setting.

MATERIALS AND METHODS

A total of 171 patients of TNBCs who were registered and treated at a tertiary care cancer hospital in North India between January 2005 and December 2008 were included in this study. All these patients had undergone their primary treatment from this institute and from the very beginning were under the care of a single unit. These patients were followed-up till December 2010. A detailed retrospective analysis was carried out according to a planned Performa. Diagnosis of breast cancer was primarily based on clinical presentation, imaging (mammogram, ultrasound or MRI of the breast when indicated) and cytopathological studies. Staging was done with X-ray chest, Ultrasound abdomen for localized disease with the addition of bone scan and computed tomography (CT) or positron emission tomography (PET) scan for locally advanced disease and metastatic disease. Patients were staged in accordance with American Joint Committee on Cancer (AJCC)-6-(TNM) staging system. TNBC was defined as ER negative, PR negative and HER2 neu negative cancers. These tests were carried out with standard Food and Drug Administration (FDA) approved kits by IHC. For each patient in the database, antibody

staining of a set of paraffin embedded slides for ER and PR was carried out. This test was carried out using the BioGenex kit. Any positivity was taken as positive. The over expression of HER2 status was evaluated using the Hercep Test kit from Dako, Denmark. A HER2 report of 3 + by IHC was considered as positive. Confirmation by Fluorescence in-situ hybridisation (FISH) was carried out for all those with receptor status 2+. HER2 score of 0 or 1 was considered negative. Patients with ambiguous marker status were excluded. Baseline epidemiological and tumor characteristics of triple negative cancers were analyzed for all 171 patients. Outcomes were analyzed for subgroups of early breast cancer (EBC), locally advanced breast cancer (LABC) and metastatic breast cancer (MBC) separately. EBC was defined as a T-stage \leq T2 and/or N-stage \leq N1, LABC was defined as T-stage \geq T3 and/or N stage \geq N2 without any evidence of distant metastasis. MBC was defined as any breast cancer with evidence of distant metastasis. However, for survival analysis 31 patients who were lost to follow-up for more than 1 year were excluded. Of these 31 patients, 27 were non metastatic at presentation and were disease free and 4 were metastatic and in remission at last follow-up. Attempts were made to contact these patients telephonically as well as through letters. However, no responses could be obtained. SPSS v. 16 (SPSS Inc.,) was used for statistical analysis. The consort diagram is illustrated in Figure 1.

RESULTS

For the period between January 2005 and December 2008, approximately 12.5% of female breast cancers were found to be TNBC’s on immunohistochemical analysis of receptor status at our institute. Of these 171 patients satisfying the inclusion criteria were found and included in the study.

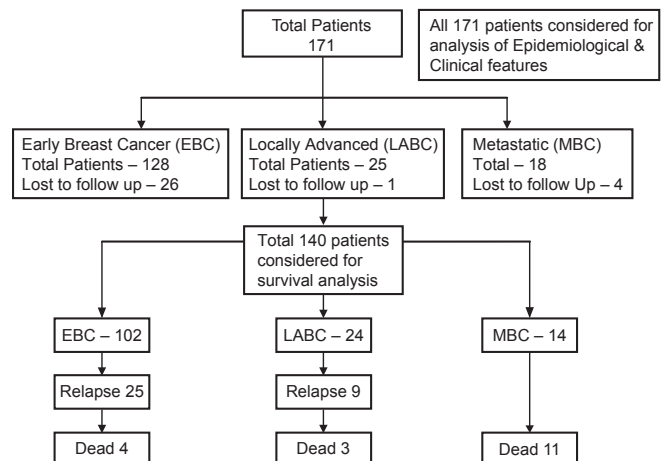


Figure 1: Consort diagram of the cohort

Minimum age at presentation was 22 years and maximum age was 75 years with a median age of 49 years. One hundred and three patients (60%) were less than 50 years and only 2 (1.2%) were more than 70 years. Sixty eight patients (40%) had a lump in the breast for less than 1 month duration and 4 (2.5%) did not notice the lump prior to presentation. Other local symptoms like pain (4.3%), redness and ulceration (8.1%) and bloody nipple discharge (1.9%) were seen in only a minor proportion of patients. None of the usual risk factors were found to be significantly elevated in this cohort [Table 1].

Clinical features

The incidence on the left side and right side was 47.5% and 51.9% respectively and only one patient had bilateral breast cancer at presentation. Clinically T2 was the most common (60.5%) and T4 (10.5%) the least common presentation. Node negative patients were the largest group (65%) followed by N1 (28%), N2 (4%), and N3 (3%). The diagnosis was confirmed by fine needle aspiration cytology (FNAC) prior to definitive surgery in all EBC patients (128/171). The others who were candidates for NACT or had metastases at presentation underwent a trucut biopsy. Two patients developed metachronous second tumor in the opposite breast and 2 second primary cancers (one in the gall bladder and one in ovary). One hundred and twenty two patients (71%) were alive at last follow-up. Eighteen (11%) had died due to progressive disease (PD). Thirty one patients (18%) were lost to follow-up [Table 2].

Early breast cancer

Out of 128 patients who underwent upfront surgery 97 (75.8%) had undergone modified radical mastectomy (MRM) (as per patient wishes) and 31 patients (24.2%) breast conserving surgery (BCS) and the details are summarized in Table 3. Invasive ductal carcinoma was the predominant histology (127 patients) and one patient had metaplastic disease. The mean number of positive lymph nodes was 1.7. Extra capsular extension was present in 26 of 45 patients (58%) who were positive for lymph nodes. Lymphovascular invasion was present in 97 of 128 patients (76%) who underwent surgery. Majority of the tumors (61%) were high grade. The mean size of tumor post-surgery was 3.2 cm (0-9 cm). There was no significant correlation between the size of the tumor and the incidence of lymph node positivity with smaller tumors also showing significant lymph node positivity and larger ones not correspondingly showing any higher incidence of the same [Table 4]. Stage II was the predominant pathological stage (71%) followed by stage III and stage I. Details of adjuvant chemotherapy is summarized in Table 5. The dictum usually followed at our institute was anthracycline based

Table 1: Risk factors

Factor	N=171	Percent
Age		
<50 years	103	60
>50 years	68	40
Age at first full term pregnancy*		
<30 years	147	85
>30 years	10	7
Number of children		
>2 children	130	76
Nullipara	14	8
Breast feeding		
Breast fed	136	81
Menopausal status		
Pre-/peri-menopausal	89	52
Post-menopausal	82	48
Family history		
1 st degree relative with breast cancer	7	4
1 st degree relative with ovarian cancer	1	0.6

*14 (8%) were nullipara

Table 2: Clinical profile

Factor	N=171	Percent
Clinical stage		
I	21	13
II	106	62
III	26	15
IV	18	10
Management protocols		
Early breast cancer (upfront surgery)	128	75
Locally advanced (NACT)	25	15
Metastatic breast cancer	18	10
Status at last follow-up		
Alive and disease free	106	62
Relapsed and alive	16	9
Relapsed and dead	18	11
Lost to follow-up (for >1 year)	31	18

NACT – Neoadjuvant chemotherapy

chemotherapy for node negative disease and taxanes with anthracyclines for node positive or large tumors. Univariate analysis showed no overall survival (OS) differences for age ($P=0.9$), T-size (0.08), lymph node positivity ($P=0.5$), or pathological stage ($P=0.8$) most likely due to the low number of events as well as short median follow-up (30 months). However, the RFS was statistically significant for lymph node status ($P=0.03$) with median RFS of 42 months for lymph node positive group [Figure 2] and for pathological stage [Figure 3] of tumor ($P=0.05$), whereas it was not significant for age ($P=0.3$), and size of tumor ($P=0.6$).

Locally advanced breast cancer

Twenty five patients (15%) with LABC were given

NACT. However, complete data was available for only 24 patients for response evaluation. Majority of the patients were between 40 and 60 years of age (76%), with

T4 disease (56%) and variable nodal status. Taxanes with anthracyclines was the preferred neoadjuvant regimen. Fourteen patients (58%) received 3 cycles of NACT, five (21%) patients 4 cycles and four patients (17%) 6 cycles of chemotherapy. Six patients (25%) achieved pathological complete response (pCR) after NACT and 12 (50%) partial response (PR) resulting in overall response rates (ORR) of 75%. the results did not significantly favor any specific type of chemotherapy ($P=0.3$) [Table 6]. Irrespective of the responses all of them underwent only MRM (strong patient bias towards MRM), followed by adjuvant chemotherapy and radiotherapy. There were no deaths or relapses in patients who were in pathological CR after NACT at a median follow-up of 25 months, which was statistically significant ($P=0.04$). However, there were 9 relapses and 3 deaths in the non-responders, which was a statistically significant difference ($P=0.04$ for RFS) [Table 7]. The OS and RFS curves for the two groups are shown in Figures 4 and 5.

Factor	N=128	Percent
Type of surgery		
MRM	97	76
BCS	31	24
Lymph node status		
0 (No)	83	64.8
1-3 (N1)	27	21.1
4-9 (N2)	12	9.4
>10 (N3)	6	4.7
Pathological tumor size		
0-2.0 (T1)	24	18.8
2.1-5.0 (T2)	88	68.8
5.1 and above (T3)	16	12.5
Grade of tumor		
Grade 1	16	12.5
Grade 2	34	26.5
Grade 3	78	61
Pathological stage		
I	18	14.1
IIA	54	42.2
IIB	37	28.9
IIIA	12	9.4
IIIB	1	0.8
IIIC	6	4.7

MRM – Modified radical mastectomy; BCS – Breast conservation surgery

Pathological tumor size	Lymph node status (%)	
	Negative	Positive
0-2.0	20 (83)	4 (17)
2.1-5.0	52 (59)	36 (41)
5.1 and above	11 (69)	5 (31)

Type	Frequency (n=126)#	Percent
Anthracycline based	50	39.1
Taxane+Anthracyclines	66	53.1
CMF*	10	7.8

*C – Cyclophosphamide; M – Methotrexate; F – 5 Flurouracil; #2 patients defaulted

Type of NACT	Pathological responses to NACT			
	CR	PR	PD	Total
Taxane+anthracycline	6	8	6	20
Anthracycline based	0	4	0	4
Total (%)	6 (25)	12 (50)	6 (25)	24

NACT – Neoadjuvant chemotherapy; PR – Partial response (residual disease after NACT); PD – Progressive disease (higher pathological stage); CR – Complete response (no residual disease)

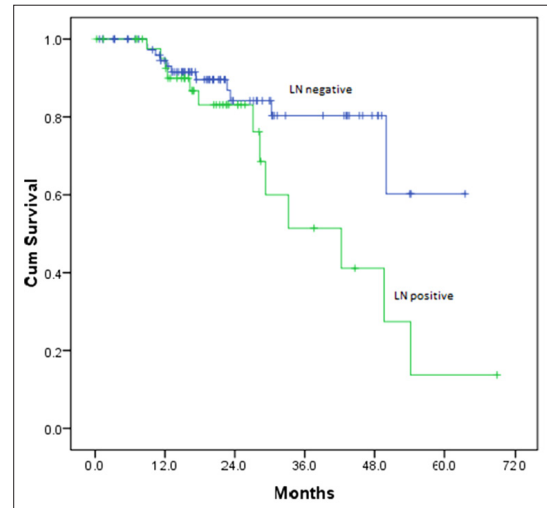


Figure 2: Relapse free survival by lymph node status

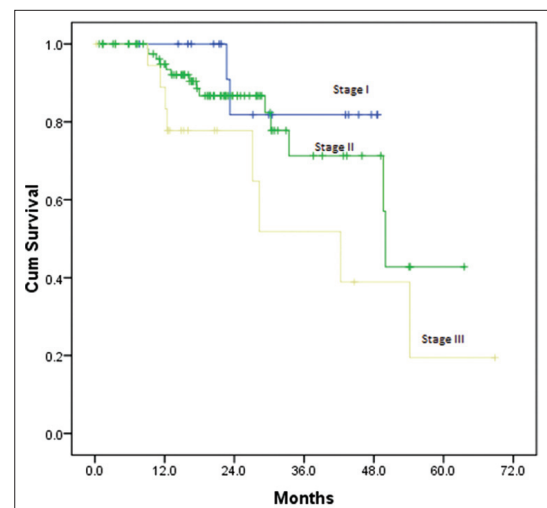


Figure 3: Relapse free survival by stage

Features of relapse

Thirty four patients (25 in the upfront surgery arm and 9 in the NACT group), out of a total of 153 who were non-metastatic at presentation and underwent surgery relapsed. The different sites of relapse are summarized in Table 8. There was no statistical difference (Chi-square test $P=0.9$) between the two groups of BCS and MRM patients in terms of the relative frequency or type of relapse [Table 9].

Metastatic breast cancer

There were 18 patients (10.5%) who had metastases at presentation and the sites of metastases are shown in Table 10. It was seen that these patients did not predominantly have large size tumors or significant axillary nodal involvement prior to metastases. Three patients took only brain radiotherapy (RT) and no further treatment. The remaining 15 patients were treated with anthracycline and taxane-based palliative chemotherapy and had an overall response rate (CR + PR) of 75%.

Survival analysis for the whole group

The median follow-up time was 30 months (9-70 months).

Table 7: Correlation: Response to NACT versus relapse

NACT response (pathological)	Relapse occurred or not	
	No	Yes
CR	6	0
Non responders	7	9

NACT – Neoadjuvant chemotherapy; CR – Complete response

Table 8: Sites of relapse

Site	Frequency (n=34)
Systemic	
Opposite breast	4
Bone	3
Lung	7
Brain	6
Multiple sites	8
Local	6

Table 9: Type of surgery versus relapse

Type of surgery	Local recurrence	Systemic recurrence	Total (n=34)
BCS (n=31)	1	5	6
MRM (n=121)	5	23	28

MRM – Modified radical mastectomy; BCS – Breast conservation surgery

Table 10: Sites of metastases at presentation

Site of metastases	Total n=18
Bone only	4
Visceral (except brain)	11
Brain (including other sites)	3

There were 18 deaths with all deaths occurring by the 29th month of follow-up. All the deaths were due to progressive disease and hence the survival curve could be more appropriately termed as breast cancer specific survival (BCSS). Thirty one patients were lost to follow-up and many had entered the study at a later date thus decreasing the median follow-up. The 3 year overall survival was 80% and it plateau thereafter [Figure 6]. Hence the median OS was not reached. On comparison of survival [Figure 7] between Early breast cancer, locally advanced and metastatic disease there was a statistically significant difference ($P=0.001$). There were 3 (12%) deaths in locally advanced arm, 4 (3.1%) in EBC arm and 11 (61%) in the metastatic arm. The median was reached only for the metastatic arm (15 months). There were 34 relapses totally in the non-metastatic group, 9 (36%) in the locally advanced group and 25 (19.5%) in the EBC group, likely reflecting the higher stage of disease in the locally advanced group. About 50% of the relapses had occurred by the 19th month of follow-up, the

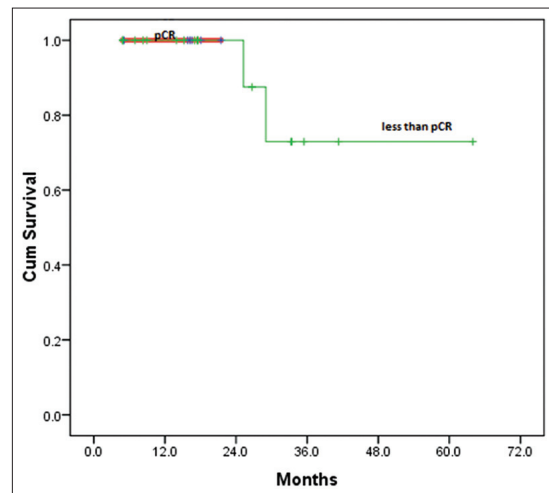


Figure 4: Overall survival after neoadjuvant chemotherapy

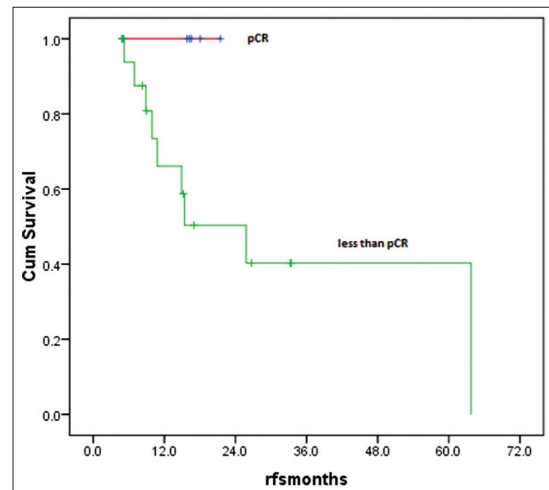


Figure 5: Relapse free survival after neoadjuvant chemotherapy

median RFS was 29 months (4-48 months) in the locally advanced group and 50 months (44-55 months) in the EBC group [Figure 8] and the difference was statistically significant ($P=0.0001$).

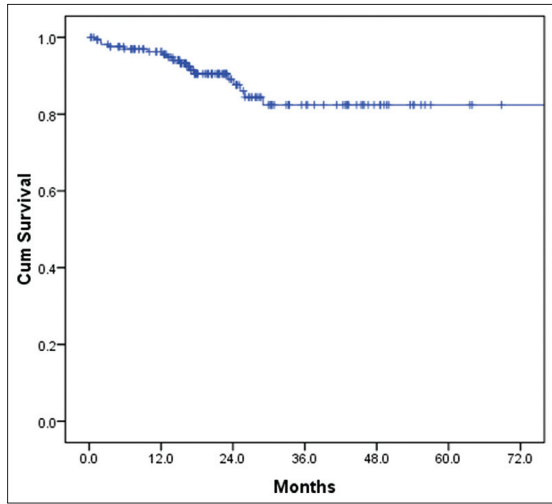


Figure 6: Overall survival for whole group

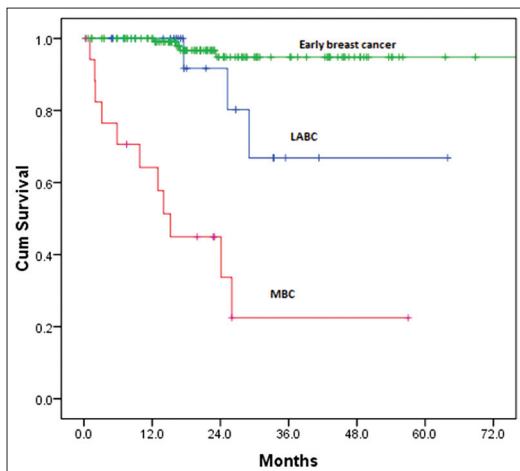


Figure 7: Overall survival by groups

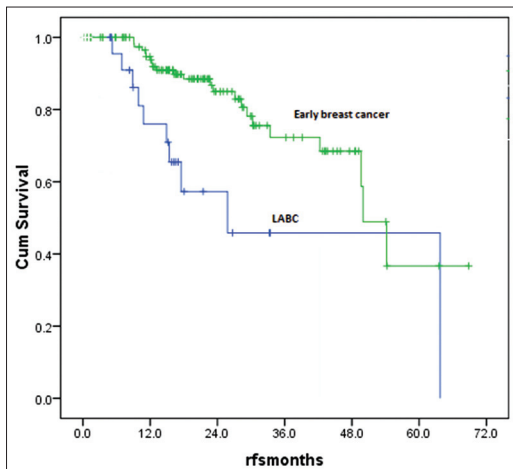


Figure 8: Relapse free survival for early and locally advanced disease

DISCUSSION

Our study was designed to look at the demographic profile, clinical features and responses to various modalities of therapies and its correlations to the clinical outcomes in the Indian setting. To our knowledge, this is possibly the largest study on TNBC done in India.

Our population was slightly younger (median age 49 years) than the ones described in western data^[4] (median age 53 years). The peak incidence was observed in the 5th decade (36.3%) in our study. This finding of younger median age most likely reflects the general trend of breast cancers occurring a decade earlier in India. None of the standard risk factors for breast cancer had any significant association as was noted in other studies also.^[9]

Clinically and pathologically stage II was the most common stage (62%) followed by stage III (15%). The low number of stage IV patients (11%) in our study most probably reflects the bias in presentation to a private tertiary care cancer center. The bias towards MRM was highly significant in our study with all patients of NACT undergoing only MRM. This reflects the social and cultural differences in the Indian population. Irrespective of the type of surgery the relapses were predominantly systemic in our study and very rarely were systemic recurrences preceded by a local relapse. It is well-known that in hormone receptor positive breast cancers, there is a definite increase in the incidence of lymph node positivity with increasing size of the tumor. This has been aptly highlighted in the study by Dent *et al.*^[4] where they have shown that in TNBCs even small tumors have a high chance of lymph node positivity. Our study also found a lack of correlation between tumor size and lymph node positivity, with 41% and 31% node positivity for T2 and T3 size tumors. The T1 size tumors had 17% incidence of lymph node positivity.

TNBCs are known to be highly chemosensitive with higher pCR rates than HR positive tumors. In our study, the pCR rates after NACT of 25% were similar to the results found by Liedtke *et al.*^[10] where they reported 22% CR rates for TNBC. Thirty four out of 153 patients (22%) who underwent surgery (upfront/after NACT) and adjuvant therapy relapsed. Six were local relapses and the rest systemic with only 3 patients with bone only disease and 25 with visceral metastases. Very few local recurrences (16%) preceded a distant recurrence. Most of the recurrences occurred within 2-3 years (84%). The high predilection for visceral metastasis was evident in our study and it was similar to the data from western studies.^[4]

Survival

Dent *et al.*^[4] in their study comparing outcomes in triple negative versus other types of breast cancers have clearly shown that TNBC patients were more likely to have died than other patients (42.2% vs. 28%). The median time to death was 4.2 years for patients with TNBCs compared with 6 years for patients with other cancers. In our study, the maximum follow-up period that could be achieved was 70 months. However, the median was 30 months. There were 18 deaths (all related to disease progression) and 34 relapses in this period. The 3 year OS/BCSS and RFS in our study was 80% and 67% respectively. This was comparable to the survival curves for the TNBC group in studies by Dent *et al.*^[4] where the BCSS and RFS were 74% and 67% and by Rakha *et al.*^[6] where BCSS and RFS were 83% and 73% for TNBCs at 5 years.

In the univariate analysis the differences in BCSS/OS, though present were not statistically significant for known prognostic factors such as age, pathological tumor size, and nodal status in patients who underwent upfront surgery likely due to low number of events and short median follow-up. However, there was a significant difference in RFS for lymph node positive and negative groups ($P=0.03$) and pathological stage of disease ($P=0.05$). The 3 year RFS for lymph node negative and positive patients was 80% and 53%. The 3 year RFS for stage II and III patients was 70% and 50% respectively. Rakha *et al.*^[6] have noted 5 year RFS of 67% for TNBC patients who were lymph node negative.

In the NACT group, there was a statistically significant difference for both BCSS and RFS between the complete responders and non-responders. The 3 year BCSS and RFS for the non-responders was 70% and 40%. The follow-up period was short (maximum of 3 years), and there were no relapses or deaths in the complete responders ($P=0.04$). Similar results were seen in the study by Liedtke *et al.*^[10] with 94% 3 year OS for the pathological complete responders and 68% for patients with residual disease.

It is likely that a longer follow-up period would have brought out the differences in OS statistics for relevant prognostic factors. However, the numbers of relapses were sufficient to show statistical significance for the prognostic factors such as stage and lymph node positivity.

CONCLUSIONS

Triple negative cancers are highly aggressive tumors that have distinct epidemiological, pathological and outcome characteristics.^[4,6,7] This was evident in our study where we found higher grade tumors with a significant number of

early relapses despite the short median follow-up. About 12.5% of breast cancers at this institute were TNBCs, and they affected younger females with no significant risk factors or family history, with no correlation between lymph node positivity and tumor size, had most of the recurrences distally in visceral organs within a period of 3 years. They responded well to NACT and the complete responders were relapse free at 3 years of follow-up. These data are still early findings and further follow-up for more mature data is on.

The main limitation of our study was the lack of testing for basal cytokeratins. Further, large scale prospective trials incorporating basal cytokeratin markers and gene expression profiling are required for complete characterization of these tumors and to identify a positive marker that can facilitate targeted therapy.

REFERENCES

1. ICMR Cancer Registry 2004: Consolidated Reports of the PBCR and HBCR's. 2001-2003. p. 13.
2. Perou CM, Sørlie T, Eisen MB, van de Rijn M, Jeffrey SS, Rees CA, *et al.* Molecular portraits of human breast tumours. *Nature* 2000;406:747-52.
3. Nielsen TO, Hsu FD, Jensen K, Cheang M, Karaca G, Hu Z, *et al.* Immunohistochemical and clinical characterization of the basal-like subtype of invasive breast carcinoma. *Clin Cancer Res* 2004;10:5367-74.
4. Dent R, Trudeau M, Pritchard KI, Hanna WM, Kahn HK, Sawka CA, *et al.* Triple-negative breast cancer: Clinical features and patterns of recurrence. *Clin Cancer Res* 2007;13:4429-34.
5. National Health Service Breast Screening Programme (NHSBSP) and the Royal College of Pathologists. Pathology Reporting of Breast Disease. Sheffield: NHSBSP and the Royal College of Pathologists, NHSBSP Pub. No 58; 2005.
6. Rakha EA, El-Sayed ME, Green AR, Lee AH, Robertson JF, Ellis IO. Prognostic markers in triple-negative breast cancer. *Cancer* 2007;109:25-32.
7. Haffty BG, Yang Q, Reiss M, Kearney T, Higgins SA, Weidhaas J, *et al.* Locoregional relapse and distant metastasis in conservatively managed triple negative early-stage breast cancer. *J Clin Oncol* 2006;24:5652-7.
8. Ajaikumar BS, Rao R, Prabhu J, Kulkarni JD, Patil PK, Babu C, *et al.* The prognostic importance of triple negative breast cancer: A population based study in India. *J Clin Oncol* 2009;27:e22219.
9. Millikan RC, Newman B, Tse CK, Moorman PG, Conway K, Dressler LG, *et al.* Epidemiology of basal-like breast cancer. *Breast Cancer Res Treat* 2008;109:123-39.
10. Liedtke C, Mazouni C, Hess KR, André F, Tordai A, Mejia JA, *et al.* Response to neoadjuvant therapy and long-term survival in patients with triple-negative breast cancer. *J Clin Oncol* 2008;26:1275-81.

How to cite this article: Suresh P, Batra U, Doval DC. Epidemiological and clinical profile of triple negative breast cancer at a cancer hospital in North India. *Indian J Med Paediatr Oncol* 2013;34:89-95.

Source of Support: Nil, **Conflict of Interest:** None declared.