

# Effect of bracket base design on shear bond strength to feldspathic porcelain

Kazem Dalaie<sup>1</sup>, Armin Mirfasihi<sup>2</sup>, Solmaz Eskandarion<sup>3</sup>, Sattar Kabiri<sup>4</sup>

<sup>1</sup>Department of Orthodontics, School of Dentistry, Shahid Beheshti University of Medical Sciences, Tehran, Iran,

<sup>2</sup>General Dentistry Student, Dental School, Shahid Beheshti University of Medical Sciences, Tehran, Iran,

<sup>3</sup>Department of Dental Materials, School of Dentistry, Shahid Beheshti University of Medical Sciences, Tehran, Iran,

<sup>4</sup>Department of Orthodontics, Dental School, Shahid Beheshti University of Medical Sciences, Tehran, Iran

**Correspondence:** Dr. Sattar Kabiri  
Email: sattarkabiri@yahoo.com

## ABSTRACT

**Objectives:** This study sought to assess the effect of bracket base design on the shear bond strength (SBS) of the bracket to feldspathic porcelain. **Materials and Methods:** This *in vitro*, experimental study was conducted on 40 porcelain-fused-to-metal restorations and four different bracket base designs were bonded to these specimens. The porcelain surfaces were etched, silanized, and bonded to brackets. Specimens were thermocyclered, incubated for 24 h and were subjected to SBS. Data were analyzed using Shapiro–Wilk test, Levene’s test, one-way ANOVA, and Tukey’s honest significant difference test. Adhesive remnant index was calculated and compared using Fisher’s exact test. **Results:** One-way ANOVA showed that the SBS values were significantly different among the four groups ( $P < 0.001$ ). Groups 1, 2, and 4 were not significantly different, but group 3 had significantly lower SBS ( $P < 0.001$ ). Fractures mostly occurred at the porcelain-adhesive interface in Groups 1 and 2 while in Groups 3 and 4, bracket-adhesive and mixed failures were more common. **Conclusion:** The bracket base design significantly affects the SBS to feldspathic porcelain.

**Key words:** Bond strength, dental porcelain, orthodontic brackets

## INTRODUCTION

Demand for orthodontic treatment has greatly increased in adults in the recent years.<sup>[1]</sup> Among the types of brackets, metal brackets are the oldest and most commonly used type.<sup>[2]</sup> Porcelain-fused-to-metal (PFM) restorations are the most commonly used crowns due to high strength and accuracy of the cast metal and esthetic properties of the porcelain. Factors affecting the bracket bond strength to enamel have been extensively studied and include enamel surface preparation techniques, adhesive systems, and

bracket-related factors such as the size and design of bracket base. Reportedly, 6–8 MPa bond strength is optimal for bracket bond to enamel.<sup>[3,4]</sup> Some studies confirm the effect of bracket base design on bond strength to enamel<sup>[5-8]</sup> while some others have rejected this theory.<sup>[9,10]</sup>

Type of porcelain surface treatment,<sup>[11]</sup> the adhesive system used and size and design of bracket base are believed to affect the bracket bond to porcelain.

This is an open access article distributed under the terms of the Creative Commons Attribution-NonCommercial-ShareAlike 3.0 License, which allows others to remix, tweak, and build upon the work non-commercially, as long as the author is credited and the new creations are licensed under the identical terms.

**For reprints contact:** reprints@medknow.com

**How to cite this article:** Dalaie K, Mirfasihi A, Eskandarion S, Kabiri S. Effect of bracket base design on shear bond strength to feldspathic porcelain. *Eur J Dent* 2016;10:351-5.

**DOI:** 10.4103/1305-7456.184161

### Access this article online

Quick Response Code:



Website:  
www.eurjdent.com

There is a gap of information about the effect of bracket base design on the bond strength of bracket to porcelain. Thus, this *in vitro* study sought to assess the effect of bracket base design on the shear bond strength (SBS) of the bracket to feldspathic porcelain.

## MATERIALS AND METHODS

This *in vitro* experimental study was conducted on PFM crowns. Bond strength of brackets with four different base designs to feldspathic porcelain was evaluated. Considering the Type I error of 0.05 and Type II error of 0.2 (power of 80%), the sample size was calculated to be 10 specimens in each group (a total of 40).

### Fabrication of specimens

Mandibular premolars of both quadrants on a mandibular dentate model (Nissin, Tokyo, Japan) received the standard preparation for PFM crowns. Forty crowns were fabricated as such and randomly divided into four groups of 10. Each type of bracket was randomly allocated to one group, and brackets were bonded to PFM crowns under similar conditions.

The four types of brackets used were as follows:

1. Discovery stainless steel brackets with laser-structured base (Dentaurum, Ispringen, Germany)
2. Mini Master stainless steel brackets with photochemically micro-etched base (American Orthodontics, WI, USA)
3. Mini Twin stainless steel bracket with maximum injection molding base (Henry Schein Orthodontics, CA, USA)
4. Radiance ceramic bracket with patented Radiance mechanical lock base (American Orthodontics, WI, USA).

### Bracket bonding

The porcelain surface was first cleaned with a brush and then completely dried. Next, 9% hydrofluoric acid (Porcelain Etch®, Ultradent, UT, USA) was applied to the buccal surface of crowns using an applicator. After 2 min, the etchant was removed by rinsing with water, and the surface was air dried for 15 s using air spray to yield a porous, chalky porcelain surface. Using the sweeping motion of an applicator, silane (Ultradent Porcelain Repair Kit, USA) was applied to the porcelain surface. The bonding agent was applied. Self-cure composite resin (3M Unitek, USA) was applied to the

posterior surface of the bracket in 1 mm thickness according to the manufacturer's instructions, and the bracket was placed on the porcelain surface using 150 N load measured by an orthodontic gauge (Dentaurum, Ispringen, Germany). Before composite polymerization, the excess composite resin was removed using the sharp tip of an explorer. Crowns on their respective dies were embedded in auto polymerizing acrylic resin (Meliodent, Germany) [Figure 1].

### Thermocycling

All specimens were thermocycler (Dorsa, Tehran, Iran) for 5000 cycles at 5–55°C with 20 s of dwell time in each water bath and 20 s of transfer time. Next, the specimens were stored in an incubator (Pars Azma, Tehran, Iran) at 37°C and 100% humidity for 24 h.

### Shear bond strength testing

The bracket-porcelain SBS was measured using UTM Instron machine (Zwick Roell Z020, Germany). The load was applied at a crosshead speed of 1 mm/min to the bracket-porcelain interface. To apply a load, each specimen was fixed by clamps to maintain the bonding interface parallel to the blade. Load was applied until fracture, and the load at fracture was recorded in Newton (N). To convert the SBS values to Megapascals (MPa), the load in N was divided by the cross-sectional area of the bracket base (m<sup>2</sup>) provided by the manufacturers (12.93 mm<sup>2</sup> for Discovery, 11.04 mm<sup>2</sup> for Mini Master, 9.42 mm<sup>2</sup> for Mini Twin, and 13.94 mm<sup>2</sup> for Radiance).

### Adhesive remnant index

After separation of brackets from the porcelain, the bracket base and porcelain surface were examined under a stereomicroscope (Olympus SZX9 Research Stereomicroscope System, Japan) at × 10 magnification. To assess the adhesive remnant index (ARI) describing the amount of adhesive remained on the surface, the classification of Bordeaux *et al.*<sup>[12]</sup> was used.



Figure 1: Crowns on their respective dies embedded in acrylic blocks

### Statistical analysis

The Shapiro–Wilk test was used to assess the normality of the SBS data and revealed that the data had a normal distribution. Levene’s test was used to assess the equality of variances for SBS values and confirmed it. One-way ANOVA was applied for overall comparison of groups while the Tukey’s honest significant difference (HSD) test was used for pairwise comparisons. ARI was calculated and compared among groups using Fisher’s exact test. Type I error was considered as 0.05 and  $P < 0.05$  was considered statistically significant [Figure 2].

## RESULTS

### Shear bond strength

The mean SBS values for the four groups are demonstrated in Table 1. Comparison of the mean SBS values with one-way ANOVA revealed statistically significant differences among the four groups ( $P < 0.001$ ). Pairwise comparison of groups with Tukey’s HSD test revealed that groups one, two, and four were not significantly different regarding the mean SBS while the mentioned three groups had significantly higher mean SBS values than group 3 ( $P < 0.001$  for all three). The highest mean SBS values belonged to groups 1 (11.61 MPa), 4 (11.38 MPa), and 2 (10.68 MPa), respectively, which were not significantly different. Group three had the lowest mean SBS (6.16 MPa), which was significantly lower than the corresponding values in the remaining three groups ( $P < 0.001$ ) [Table 2].

### Adhesive remnant index

The results of the ARI scores in the four groups based on the Fisher’s exact test are shown in Table 3. The ARI scores were significantly different among the four groups ( $P < 0.001$ ). As seen in Table 3, Type III ARI was the most frequent in groups one and two. However, in groups three and four, Types I and II indicative of bracket-adhesive and mixed failures, respectively were more common [Figure 3].

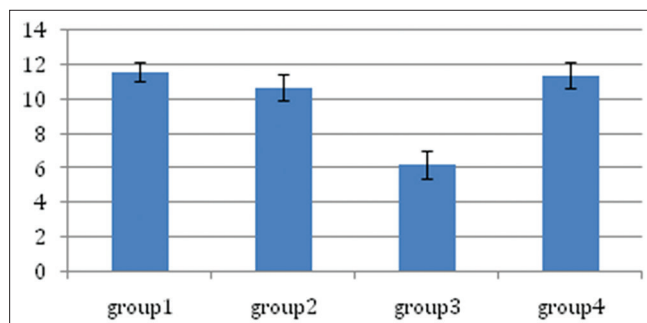


Figure 2: Error bar of the shear bond strength values

## DISCUSSION

The purpose of this study was to compare the SBS of metal and ceramic brackets with different base designs to porcelain crowns and showed that the Discovery bracket had the highest mean SBS followed by the Radiance ceramic bracket and Mini Master bracket. Mini Twin bracket had the lowest mean SBS, showing significant differences with the values in other groups. This confirms the effect of bracket base design on SBS to porcelain.

In the fabrication process of Discovery brackets, the base surface is selectively melted in a controlled fashion by laser irradiation in the final step of fabrication causing droplets of variable sizes. The undercuts created by these droplets provide retention. These structures are probably responsible for high SBS of this bracket to porcelain demonstrated in this study. The manufacturing process of Radiance ceramic bracket is similar to that of other monocrystalline ceramic brackets. Radiance ceramic bracket is fabricated using Patented Quad Matte technology. For the fabrication of Mini Master brackets, 80-gauge mesh is placed over an etched foil base and is subjected to photochemical etching. The resultant porosities provide retention. Mini Twin brackets, with the lowest SBS in this study, are fabricated as a single mass using maximum injection molding technique and then the base is subjected to micro etching to provide retention. Such base design explains the low SBS obtained in this group. The undercuts created in this technique probably provide less mechanical retention. However, in all four groups, the mean SBS values were higher than the minimum required bond strength value of 6–8 MPa<sup>[3,4]</sup> and thus, they may be safely used in the clinical setting.

The ARI scores in this study confirmed our SBS results. In groups one, two, and four (almost) with the

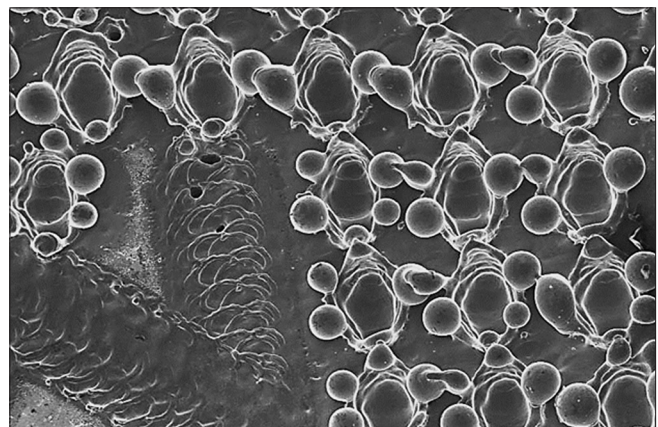


Figure 3: Electron micrograph of Discovery bracket base following laser irradiation

**Table 1: The shear bond strength values in the four groups**

	n	Mean	SE	95% CI for mean		Minimum	Maximum
				Lower bound	Upper bound		
Group 1	10	11.6150	0.57924	10.3047	12.9253	8.80	14.21
Group 2	10	10.6870	0.78903	8.9021	12.4719	6.35	14.07
Group 3	10	6.1660	0.82768	4.2937	8.0383	2.46	11.14
Group 4	10	11.3880	0.78307	9.6166	13.1594	7.57	15.57
Total	40	9.9640	0.50642	8.9397	10.9883	2.46	15.57

SE: Standard error, CI: Confidence interval

**Table 2: Comparison of the shear bond strength values among the four groups using Tukey's honest significant difference test**

Group I	Group J	Mean difference (I-J)	SE	significant
Group 1	Group 2	0.92800	1.06215	0.818
	Group 3	5.44900*	1.06215	0.000
	Group 4	0.22700	1.06215	0.996
Group 2	Group 1	-0.92800	1.06215	0.818
	Group 3	4.52100*	1.06215	0.001
	Group 4	-0.70100	1.06215	0.911
Group 3	Group 1	-5.44900*	1.06215	0.000
	Group 2	-4.52100*	1.06215	0.001
	Group 4	-5.22200*	1.06215	0.000
Group 4	Group 1	-0.22700	1.06215	0.996
	Group 2	0.70100	1.06215	0.911
	Group 3	5.22200*	1.06215	0.000

SE: Standard error, \*significant difference between groups (P < 0.001)

**Table 3: Adhesive remnant index scores in the four groups according to the Fisher's exact test**

	VAR00002			Total
	1.00	2.00	3.00	
VAR00001				
1.00				
Count	0	1	9	10
Percentage within VAR00001	0.0	10.0	90.0	100.0
2.00				
Count	0	0	10	10
Percentage within VAR00001	0.0	0.0	100.0	100.0
3.00				
Count	6	1	3	10
Percentage within VAR00001	60.0	10.0	30.0	100.0
4.00				
Count	0	5	5	10
Percentage within VAR00001	0.0	50.0	50.0	100.0
Total				
Count	6	7	27	40
Percentage within VAR00001	15.0	17.5	67.5	100.0

stronger bond between bracket and composite, the ARI score was mostly Type III. This indicates a strong bracket-adhesive bond. In contrast, in group three with the lowest SBS, fractures were mostly Type I and at the bracket-adhesive interface. As observed in this study,

ceramic brackets had high-bond strength comparable to that of metal brackets, which is in line with the results of Reddy *et al.*, and Stumpf Ade *et al.*<sup>[13,14]</sup> Samruajbenjakul and Kukiattrakoon,<sup>[15]</sup> in 2009, evaluated the effect of the base design of ceramic and metal brackets on the SBS to feldspathic porcelain. They showed that bracket base design significantly affected the SBS, which confirms present findings despite some differences between their study and the present study.

Bishara *et al.*,<sup>[9,16]</sup> in 2004, assessed the SBS of two brackets with single and double mesh bases to enamel *in vitro* and revealed no significant difference in bond strength. They showed that the difference between the two base designs did not affect the bond strength. Cucu *et al.*<sup>[10]</sup> evaluated the effect of base size and mesh size on SBS in an *in vitro* study and reported no significant difference between brackets with different base sizes and similar mesh size. They demonstrated that base size had no effect on bond strength. Since this was an *in vitro* study, further clinical studies are required to better elucidate this subject.

## CONCLUSION

The bracket base design significantly affects the SBS of brackets to feldspathic porcelain, and debonding characteristics are related to bracket base design.

## Financial support and sponsorship

Nil.

## Conflicts of interest

There are no conflicts of interest.

## REFERENCES

1. Whitehouse JA. Everyday uses of adult orthodontics. *Dent Today* 2004;23:116, 118, 120.
2. Keim RG, Gottlieb EL, Nelson AH, Vogels DS 3<sup>rd</sup>. 2008 JCO study of orthodontic diagnosis and treatment procedures, part 1: Results and trends. *J Clin Orthod* 2008;42:625-40.
3. Charles A, Senkutvan R, Ramya RS, Jacob S. Evaluation of shear bond strength with different enamel pretreatments: An *in vitro* study. *Indian J Dent Res* 2014;25:470-4.

4. Whitlock BO 3<sup>rd</sup>, Eick JD, Ackerman RJ Jr., Glaros AG, Chappell RP. Shear strength of ceramic brackets bonded to porcelain. *Am J Orthod Dentofacial Orthop* 1994;106:358-64.
5. Algera TJ, Feilzer AJ, Prahl-Andersen B, Kleverlaan CJ. A comparison of finite element analysis with *in vitro* bond strength tests of the bracket-cement-enamel system. *Eur J Orthod* 2011;33:608-12.
6. Cozza P, Martucci L, De Toffol L, Penco SI. Shear bond strength of metal brackets on enamel. *Angle Orthod* 2006;76:851-6.
7. Sorel O, El Alam R, Chagneau F, Cathelineau G. Comparison of bond strength between simple foil mesh and laser-structured base retention brackets. *Am J Orthod Dentofacial Orthop* 2002;122:260-6.
8. Wang WN, Li CH, Chou TH, Wang DD, Lin LH, Lin CT. Bond strength of various bracket base designs. *Am J Orthod Dentofacial Orthop* 2004;125:65-70.
9. Bishara SE, Soliman MM, Oonsombat C, Laffoon JF, Ajlouni R. The effect of variation in mesh-base design on the shear bond strength of orthodontic brackets. *Angle Orthod* 2004;74:400-4.
10. Cucu M, Driessen CH, Ferreira PD. The influence of orthodontic bracket base diameter and mesh size on bond strength. *SADJ* 2002;57:16-20.
11. Yassaei S, Moradi F, Aghili H, Kamran MH. Shear bond strength of orthodontic brackets bonded to porcelain following etching with Er: YAG laser versus hydrofluoric acid. *Orthodontics (Chic.)* 2013;14:e82-7.
12. Bordeaux JM, Moore RN, Bagby MD. Comparative evaluation of ceramic bracket base designs. *Am J Orthod Dentofacial Orthop* 1994;105:552-60.
13. Reddy YG, Sharma R, Singh A, Agrawal V, Agrawal V, Chaturvedi S. The shear bond strengths of metal and ceramic brackets: An *in-vitro* comparative study. *J Clin Diagn Res* 2013;7:1495-7.
14. Stumpf Ade S, Bergmann C, Prietsch JR, Vicenzi J. Shear bond strength of metallic and ceramic brackets using color change adhesives. *Dental Press J Orthod* 2013;18:76-80.
15. Samruajbenjakul B, Kukiattrakoon B. Shear bond strength of ceramic brackets with different base designs to feldspathic porcelains. *Angle Orthod* 2009;79:571-6.
16. Bishara SE, Ajlouni R, Oonsombat C, Laffoon J. Bonding orthodontic brackets to porcelain using different adhesives/enamel conditioners: A comparative study. *World J Orthod* 2005;6:17-24.