

Diagnostic Single Gene Analyses Beyond Sanger

Economic high-throughput sequencing of small genes involved in congenital coagulation and platelet disorders

Juliane Najm^{1,*} Matthias Rath^{1,*} Winnie Schröder¹ Ute Felbor¹

¹Department of Human Genetics, University Medicine Greifswald, and Interfaculty Institute of Genetics and Functional Genomics, University of Greifswald, Greifswald, Germany

Address for correspondence Prof. Dr. Ute Felbor, MD, Department of Human Genetics, University Medicine Greifswald, Fleischmannstr. 43, 17475 Greifswald, Germany (e-mail: felbor@uni-greifswald.de).

Hämostaseologie 2018;38:158–165.

Summary

Molecular testing of congenital coagulation and platelet disorders offers confirmation of clinical diagnoses, supports genetic counselling, and enables predictive and prenatal diagnosis. In some cases, genotype-phenotype correlations are important for predicting the clinical course of the disease and adaptation of individualized therapy. Until recently, genotyping has been mainly performed by Sanger sequencing. While next generation sequencing (NGS) enables the parallel analysis of multiple genes, the cost-value ratio of custom-made panels can be unfavorable for analyses of specific small genes. The aim of this study was to transfer genotyping of small genes involved in congenital coagulation and platelet disorders from Sanger sequencing to an NGS-based method. A LR-PCR approach for target enrichment of the entire genomic regions of the genes *F7*, *F10*, *F11*, *F12*, *GATA1*, *MYH9*, *TUBB1* and *WAS* was combined with high-throughput sequencing on a MiSeq platform. NGS detected all variants that had previously been identified by Sanger sequencing. Our results demonstrate that this approach is an accurate and flexible tool for molecular genetic diagnostics of single small genes.

Keywords

- ▶ congenital coagulation and platelet disorders
- ▶ LR-PCR
- ▶ NGS
- ▶ high throughput sequencing

Zusammenfassung

Die molekulare Diagnostik hereditärer Gerinnungs- und Thrombozytenstörungen ermöglicht die Bestätigung einer klinischen Verdachtsdiagnose, ist aber auch für die genetische Beratung und die prädiktive und pränatale Diagnostik notwendig. In einigen Fällen ist eine Genotyp-Phänotyp-Korrelation für die Prognose des klinischen Krankheitsverlaufs wichtig und erlaubt eine individuelle Therapieplanung. Im

* Both authors contributed equally.

received
January 31, 2017
accepted after revision
June 6, 2017

© 2018 Georg Thieme Verlag KG
Stuttgart · New York

DOI <https://doi.org/10.5482/HAMO-17-01-0008>.
ISSN 0720-9355.

Schlüsselwörter

- ▶ hereditäre gerinnungs- und thrombozytenstörungen
- ▶ LR-PCR
- ▶ NGS
- ▶ hochdurchsatzsequenzierung

Gegensatz zur Sanger-Sequenzierung ermöglicht Next Generation Sequencing (NGS) die parallele Analyse mehrerer Gene. Allerdings kann das Kosten-Nutzen-Verhältnis von großen Genpanels für die Analyse spezifischer kleiner Gene ungünstig sein. Ziel dieser Studie war es, die Genotypisierung kleiner Gene für hereditäre Gerinnungs- und Thrombozytenstörungen von der Sanger-Sequenzierung auf eine NGS-basierte Methode umzustellen. Zu diesem Zweck wurde ein LR-PCR-Ansatz zur Anreicherung der gesamten genomischen Regionen der Gene *F7*, *F10*, *F11*, *F12*, *GATA1*, *MYH9*, *TUBB1* und *WAS* mit einer Hochdurchsatzsequenzierung auf einer MiSeq-Plattform kombiniert. Mit dieser Methode konnten alle durch Sanger-Sequenzierung identifizierten Veränderungen sicher nachgewiesen werden. Unsere Ergebnisse zeigen, dass dieser Ansatz ein präzises und flexibles Werkzeug in der molekulargenetischen Diagnostik einzelner kleiner Gene sein könnte.

Hemorrhagic diathesis can be caused by disorders in primary hemostasis (such as platelet disorders) and in secondary hemostasis (e.g. coagulation factor deficiencies). They present a heterogeneous group of bleeding disorders with clinical manifestations ranging from mild to severe.¹ The prevalence of the individual disease in the general population is low and strongly influenced by ethnicity and rate of consanguinity.

For many hereditary coagulation and platelet disorders, the diagnostic request focusses on only one specific gene (e.g. *F7* or *F10*). The identification of the causative variant of an affected patient does not only confirm the diagnosis but can also influence the therapeutic regimen. Furthermore, targeted testing of at-risk family members becomes feasible.

In the past two decades, Sanger technology was considered to be the “gold standard” for sequencing. The method provides a precise tool for routine molecular diagnostics, but the capacity of this technique in terms of multiplexing and high-throughput analyses is limited. Furthermore, it is known to be cost and time consuming. In July 2016, next generation sequencing (NGS)-based molecular testing became remunerable for routine diagnostics of hereditary coagulation and platelet disorders according to the reimbursement catalogue of Germany’s statutory health insurance system (EBM).

However, while NGS-based multigene panel analyses achieve high-performance and are suitable for medium to large target regions (≥ 100 kb in settings of less well defined clinical phenotypes), they are not always proficient for the analysis of small genes in which mutations are known to be associated with a specific phenotype.² Thus, additional strategies for targeted enrichment³ must be considered especially in cases in which smaller target regions are of interest for a limited number of samples and time to diagnosis is critical.

Long-range PCR (LR-PCR) has the advantage that it does not require a customized design by commercial vendors. In this proof-of-principle study, we intended to establish LR-PCR target enrichment for single gene analyses of *F7*, *F10*, *F11*, *F12*, *GATA1*, *TUBB1*, and *WAS* on a MiSeq platform. This approach proved to be reliable, highly flexible, and also appropriate for even larger target regions such as *MYH9*.

Material and Methods**DNA Isolation and Conventional Mutation Analyses**

DNA samples of all 43 study probands were extracted with written informed consent according to the German Gene Diagnostic Act from peripheral blood lymphocytes using standard techniques. The coding regions and adjacent exon-intron boundaries (± 50 bp) of the following genes were amplified by PCR:

- *F7* (Locus Reference Genomic sequence LRG_554; transcript LRG_554t1; number of probands [n] = 6)
- *F10* (LRG_548, LRG_548t1; n = 5)
- *F11* (LRG_583, LRG_583t1; n = 3)
- *F12* (LRG_145, LRG_145t1; n = 5)
- *GATA1* (LRG_559, LRG_559t1; n = 5)
- *TUBB1* (LRG_581, LRG_581t1; n = 6)
- *WAS* (LRG_125, LRG_125t1; n = 5)
- *MYH9* (LRG_567, LRG_567t1; n = 8)

Primer sequences are available upon request. Conventional sequencing was performed on an ABI 3130xl sequencer using the BigDye Terminator v3.1 Cycle Sequencing Kit (Applied Biosystems, Carlsbad, CA, USA). Sequence data were analyzed with the SeqPilot software (Version 4.3.1, JSI Medical Systems, Ettenheim, Germany). SALSA MLPA Kits P207, P440 and P432 were used for detection of copy number variations in *F7*, *F10*, *F11*, and *MYH9* (MRC-Holland, Amsterdam, The Netherlands).

Target Enrichment and High-Throughput Sequencing

Primers for LR-PCRs covering the entire genomic regions of *F7*, *F10*, *F11*, *F12*, *GATA1*, *TUBB1*, *WAS*, and *MYH9* were designed with Primer3 (v4.0.0; <http://bioinfo.ut.ee/primer3/>); ▶ **Table S1**). PrimeSTAR® GXL DNA polymerase (Takara Bio Europe/ Clontech, Saint-Germain-en-Laye, France) was used for PCR amplification according to the manufacturer’s instructions. The upstream region of *MYH9* was amplified with the GC-RICH PCR System (Hoffmann-La Roche, Basel, Switzerland). All LR-PCR products were purified with Agencourt® AMPure® XP system (Beckman Coulter, Pasadena, USA) and quantified with the dsDNA HS Assay Kit on a Qubit® 2.0 (Thermo Fischer Scientific, Waltham, USA).

Equimolar amounts of the purified PCR amplicons were combined in 14 pools containing non-overlapping target regions of up to seven individual probands. The Nextera XT kit was used to prepare sequencing libraries with 1 ng of each pool (Illumina®, San Diego, USA). Individually barcoded DNA libraries were combined and sequenced on a MiSeq instrument with 2×150 or 2×250 cycles (Reagent Nano Kit v2 or Reagent Kit v3; Illumina®, San Diego, USA).

Bioinformatics Analyses

The MiSeq Reporter Software was used for demultiplexing and primary data analysis (MSR v2.5.1; Illumina®, San Diego, USA). The quality of sequencing reads was analyzed with the FASTQC toolkit (<http://www.bioinformatics.babraham.ac.uk/index.html>) and sequencing coverage was visualized with the GVIZ package for R software (<https://www.r-project.org/>). The SeqNext module of SeqPilot software (JSI Medical Systems) was used for read alignment against the human reference assembly GRCh37/hg19 and variant calling. Only coding regions, exon-intron boundaries (± 50 bp), and

known promoter regions of the genes were analyzed (diagnostic region of interest). $30 \times$ was defined as the minimum diagnostic sequencing depth.

Results

Fast and Comprehensive Enrichment of Various Genomic Target Regions with LR-PCR

With only minor optimization of the reaction conditions, the entire genomic loci of *F7* (14.9 kb), *F10* (26.7 kb), *F11* (23.8 kb), *F12* (14.4 kb), *GATA1* (7.8 kb), *TUBB1* (7.4 kb), and *WAS* (14.8 kb) could be successfully amplified by LR-PCR. Only one or two PCR amplicons were necessary for a specific and highly efficient enrichment of each gene (→ Fig. 1, → Table S1). Target enrichment, purification of the PCR products, pooling, and library preparation for 35 probands were completed in only two regular working days. Due to its large size of 106.8 kb, the entire genomic region of the *MYH9* gene was independently amplified without any PCR dropouts for another eight probands with eight overlapping LR-PCR amplicons.

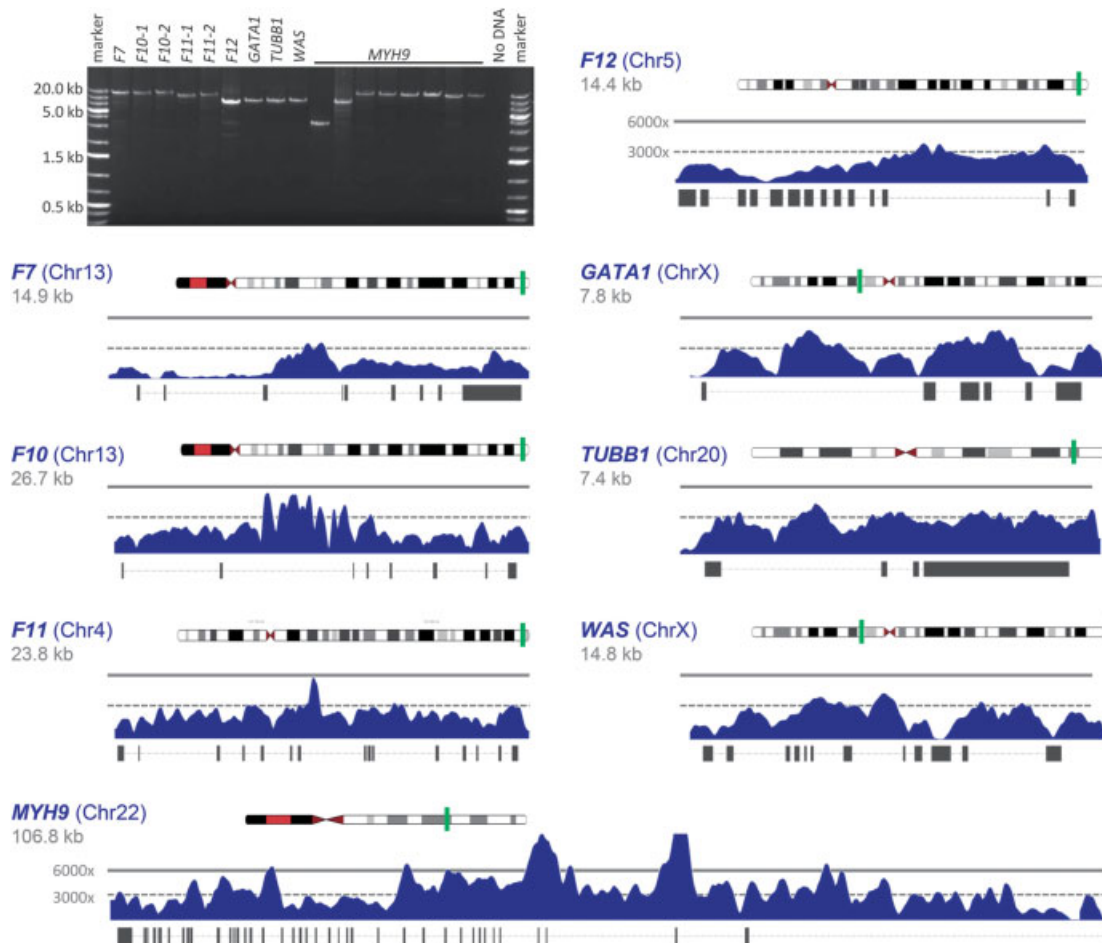


Fig. 1 Comprehensive coverage and characteristic, gene-specific patterns of sequencing depth for the entire genomic target regions. The genomic loci of *F7*, *F10*, *F11*, *F12*, *GATA1*, *TUBB1*, *WAS* and *MYH9* were amplified with 17 LR-PCR amplicons and separated by gel electrophoresis. The robust and specific amplification of all amplicons is shown for a healthy control (upper left subpanel). Representative gene-specific patterns of read depth across the entire genomic regions are shown as coverage plots (darkblue). Horizontal bold and broken lines indicate a read depth of $6000 \times$ and $3000 \times$, respectively. Chromosome ideograms with the cytogenetic locations of the genes (bold green lines) are depicted in the upper part of each subpanel. Exon-intron structures of their respective reference transcripts are shown in the lower parts. The size of its entire genomic region is given below each gene. kb = 1000 base pairs.

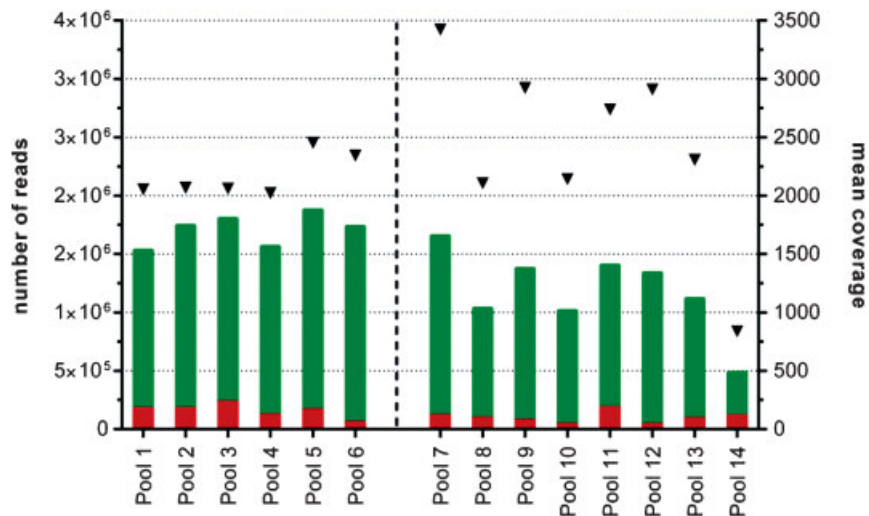


Fig. 2 Quality parameters of NGS analysis. The number of mapped (green) and unmapped reads (red; left y-axis) are shown for all 14 DNA sequencing libraries (Pool 1–14) that comprise amplified target regions of up to seven individual probands. Mean region coverage depths are depicted as black rectangles (right y-axis). Libraries sequenced with 2×150 cycles (1–6) or with 2×250 cycles (7–14) are separated by a dashed line.

High-throughput sequencing of the pooled DNA libraries produced an average output of 1.9×10^6 sequencing reads (SD: 0.3×10^6) and consistently high mean coverages for the specific target regions (Min: $837 \times$, Max: $3434 \times$, SD: $578 \times$; **Fig. 2**). Interestingly, characteristic patterns of sequencing depth were found for each gene after read alignment (**Fig. 1**). These unique patterns were recapitulated in all probands tested for the respective genetic loci (**Fig. S1**). The NGS data of the pooled DNA libraries were also checked for hints of PCR cross-contaminations, but significant read depths (>10 reads) were only seen in regions previously enriched by PCR.

Broad Coverage of Coding Regions and Exon-Intron Boundaries

The mean coverage for the coding regions, canonical splice sites, exon-intron boundaries (± 50 bp) and known promoter regions were:

- *F7*: $1292 \times$,
- *F10*: $1687 \times$,
- *F11*: $2583 \times$, and
- *F12*: $1455 \times$.

The sequencing depths of thrombocytopenia-associated genes were also sufficiently high:

- *GATA1*: $2175 \times$
- *TUBB1*: $2768 \times$
- *WAS*: $1928 \times$
- *MYH9*: $2420 \times$

Overall, 94 % of the cumulative target region was covered with a sequencing depth of more than $30 \times$ (180.6 of 191.6 kb). NGS achieved complete coverage for the diagnostic target regions of *F10*, *F11*, *F12*, *GATA1*, and *TUBB1*. Only a single exonic gap in exon 10 of the *WAS* gene (coverage $< 30 \times$; LRG_125t1: c.932_1338) was consistently seen in all five

probands sequenced for this genomic locus (**Fig. 1**). A minor sequencing problem with a mean coverage of $46 \times$ was also found in exon 36 of *MYH9* (LRG_567t1: c.5062_5150). Both regions have a high GC-content of nearly 70 %. A complete sequencing dropout was observed for only one of the 107 LR-PCR products sequenced in this study (dropout rate = 0.9 %). This single PCR amplicon was included and completely covered in a second sequencing run.

Reliable, Sensitive and Specific Mutation Detection by NGS

The main purpose of this study was to establish a novel NGS-based screen for missense, nonsense, splice and small frame-shift mutations. For an evaluation of the analytic sensitivity and specificity of this approach, DNA samples of 43 probands previously screened with conventional Sanger sequencing were re-analyzed with LR-PCR and NGS. All 25 known pathogenic or likely pathogenic variants (**Table 1**) and 128 polymorphisms in the eight analyzed genes were re-identified.

As no false-positives were detected in the regions of interest, analytical sensitivity and specificity of this NGS approach were calculated with 100 % each.

Interestingly, two large deletions previously found using multiplex ligation-dependent probe amplifications (MLPA) could be re-identified by analyses of the gene-specific coverage patterns. A homozygous deletion spanning exon 2 of the *F7* gene (proband P5; **Fig. S1**) and a heterozygous deletion of exon 6 of the *F10* gene (P7; **Fig. 3**) were consistently detected. NGS sequence analysis gave a rather precise estimation of the respective size of the *F7* [4.35 kb; c.64 + 430_131-6delinsTCGTAA] and *F10* [approximately 4.8 kb; c.(502 + 1_503-1)_(747 + 1_748-1)] deletions but could not fine-map the breakpoints down to single nucleotide level.

Table 1 Distinct pathogenic and likely pathogenic variants included in this study. Variants identified in more than one proband are only listed once

Gene	Nucleotide Change	Protein Change	Reference
F7	c.911C > T	p.(Ala304Val)	Tamary et al. 1996 ¹⁸
	c.1061C > T	p.(Ala354Val)	Bernardi et al. 1994 ¹⁹
	c.1391delC	p.(Pro464Hisfs*32)	Arbini et al. 1994 ²⁰
	c.64 + 430_131-6delinsTCGTAA	p.?	Rath et al. 2015 ²¹
F10	c.413A > T	p.(Gln138Leu)	Rath et al. 2015 ²¹
	c.979C > T	p.(Arg327Trp)	Millar et al. 2000 ²²
	c.1097G > A	p.(Arg366His)	Rath et al. 2015 ²¹
	c.1159C > T	p.(Arg387Cys)	Hermann et al. 2006 ²³
	c.1247A > C	p.(Gln416Pro)	unpublished
	deletion of exon 6 [c.(502 + 1_503-1)-(747 + 1_748-1)]	p.?	Hainmann et al. 2009 ²⁴
F11	c.644_649delTCGACA	p.(Ile215_Asp216del)	Zadra et al. 2004 ²⁵
	c.803G > A	p.(Arg268His)	Duncan et al. 2008 ²⁶
F12	c.-57G > C	p.?	Hofferbert et al. 1996 ²⁷
	c.-62C > T	p.?	Lombardi et al. 2008 ²⁸
	c.1381G > A	p.(Asp461Asn)	Schloesser et al. 1997 ²⁹
	c.1668delC	p.(Asp557Metfs*107)	unpublished
	c.1681-1G > A	p.?	Schloesser et al. 1995 ³⁰
GATA1	c.622G > A	p.(Gly208Arg)	Del Vecchio et al. 2005 ³¹
WAS	c.101delG	p.(Arg34Hisfs*11)	unpublished
	c.256C > T	p.Arg86Cys	Kolluri et al. 1995 ³²

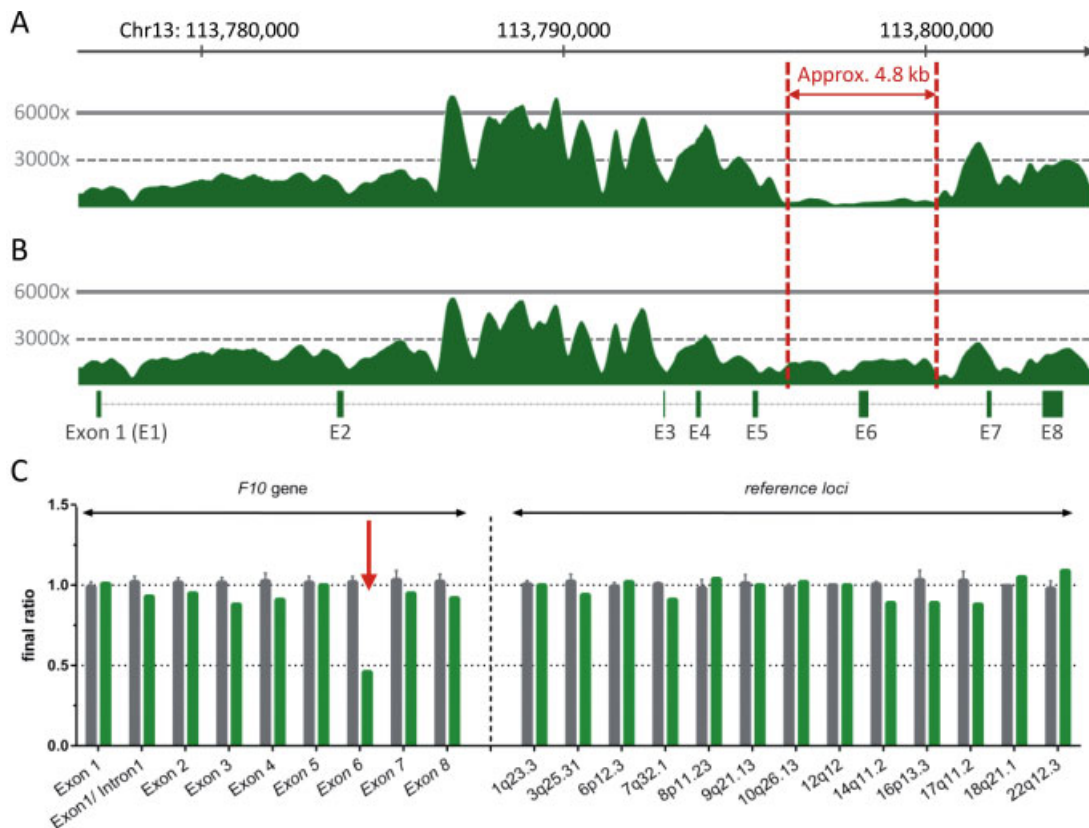


Fig. 3 Identification of a known exon-spanning heterozygous deletion in *F10*. Analysis of the *F10* coverage pattern of proband P7 (A) compared with the characteristic control pattern (B) revealed an approximately 4.8 kb spanning heterozygous deletion (indicated by red broken lines) which includes exon 6 of *F10* and part of the flanking introns. The exon-intron structure of the reference transcript is shown below. Result of *F10* MLPA analysis for P7 also shows the heterozygous deletion of exon 6 (red arrow). Green bars indicate normalized gene dosages of P7 compared with three healthy controls (grey bars). *F10*-specific probes are depicted on the left, reference probes on the right.

Discussion

The implementation of NGS in most laboratories has already changed standard workflows. Nevertheless, NGS can also be challenging for diagnostic laboratories. Its high sequencing capacity often implies the economic need for parallel analyses of large target regions or a higher number of patients. These requirements can usually be best met with capture-based NGS multigene panels. Hybridization probes minimize the risk of allele dropouts, can be easily combined and are perfectly suitable for multiplexing. Technically, all genes tested in this study could also have been covered with comprehensive capture-based panels. However, if a diagnosis can most likely be confirmed by analysis of a single small disease gene such as *F7* or *F10*, additional focussed strategies are more cost-effective.

As an alternative to time-consuming conventional Sanger sequencing, LR-PCR combined with NGS is advantageous in this context since PCR primers are less expensive than hybridization probes and PCR reactions can be realized with standard laboratory skills and equipment. Additionally, there is only a limited need for PCR optimization,⁴ and there are a lot of safety points in the workflow which allow repetition of a failed reaction without extensive additional costs. Targeted single gene analyses by LR-PCR also reduce the risk of incidental findings and have higher enrichment specificities for targets with pseudogenes or repetitive regions compared to capture-based multigene panels. Analogous strategies for the enrichment of en bloc genomic target regions have been described not only for *BRCA1*- and *BRCA2*-associated hereditary cancer predisposition syndromes and *HLA* genotyping⁵⁻⁷ but also for molecular analysis in hemophilia A.^{8,9}

Our study further expands the spectrum of genes that can be efficiently analyzed by LR-PCR amplification and NGS in a diagnostic context.

With an analytic sensitivity and specificity of 100 %, our approach proved to be highly reliable. Furthermore, it is also quite flexible as different target regions can be individually combined. Sequencing gaps or regions with a relatively low read depth that were observed in this study in *WAS* and *MYH9* are mainly restricted to regions with a high GC-content. Those regions are known to cause trouble in NGS sequencing.¹⁰ Currently they still need to be completed by Sanger sequencing.

Obviously, the specific assay for the eight genes studied here might not be suitable for all diagnostic laboratories. However, it can be individually adapted and serve as a valuable addition rather than as an alternative to existing NGS multigene panels. Even combined sequencing with DNA samples enriched with other panels is feasible and further decreases sequencing costs.

Of course, PCR-based enrichments are always hampered by the risk of allele dropout due to sequence variants in primer binding sites or large deletions that can result in a selective amplification of a single allele.^{11,12} For example, we and others have noticed difficulties in conventional DNA sequencing of exon 2 of *MYH9* with a biased amplification due to a poly-guanine repeat.¹³ Thus, several optimization

steps may be necessary for each PCR to find the best primer binding sites. Nonetheless, one has to keep in mind that allele dropout could never be completely excluded and is hard to detect by Sanger sequencing because heterozygous SNPs are often missing in amplified regions due to their small size. LR-PCR significantly increases the chance of finding a heterozygous SNP in the genomic target region that can be used to exclude an allele dropout. Therefore, a screen for heterozygous positions has to be an integral part of data analysis if PCR-based enrichment strategies are chosen.

Multiplex ligation-dependent probe amplification (MLPA) analysis still is the method of choice for copy number detection in routine diagnostics. This technique requires high quality DNA of patients as well as controls and a separate laboratory workflow.¹⁴

The LR-PCR approach described here can replace the standard method to speed up the overall diagnostic process in particular in male patients with X-linked diseases such as *GATA1*- and *WAS*-associated disorders.

A hemizygous intragenic deletion can easily be detected with NGS especially in such small genes that are covered with only one LR-PCR amplicon. Even breakpoint mapping to the approximate location within the amplicon is possible in men. But also in female carriers of X-linked diseases and autosomal disorders, a heterozygous intragenic deletion can be detected due to the unique gene specific NGS pattern (→Fig. S1). In these cases LR-PCR might assess the size of a deletion more accurately than MLPA.

One further advantage of a LR-PCR strategy covering the entire genomic region of a specific gene of interest is the possibility to directly search for deep-intronic mutations in patients that had remained mutation-negative after sequencing of the coding regions and invariant splice sites of the respective disease-associated gene. However, this procedure is not remunerable in a diagnostic setting according to the reimbursement catalogue of Germany's statutory health insurance system (EBM) and can therefore be performed only in a research context.

International research collaborations such as the ThromboGenomics Consortium or the BRIDGE-BPD study have been formed to unravel the genetic basis in probands with congenital bleeding and platelet disorders. They apply comprehensive NGS multigene panels which work well for rather clear phenotypes.^{15,16} For cases without a clear phenotypic lead, whole exome or genome sequencing might be more successful.¹⁷ However, this requires a careful clinical characterization of family members, their participation after informed consent including the management of incidental findings and a well-established bioinformatics pipeline.

Conclusion

Taken together, our LR-PCR approach combined with NGS resulted in a success rate of 100 % for the re-identification of variants in eight different exemplary genes involved in congenital coagulation and platelet disorders. In addition

to multigene panels which are particularly useful for disorders with genetic heterogeneity, it appears to be a practical alternative method to Sanger sequencing for molecular diagnostics of any small gene to confirm a specific clinical diagnosis.

What is known about this topic?

- Molecular testing of genes involved in congenital coagulation and platelet disorders has been routinely done by Sanger sequencing.
- NGS-based molecular testing became remunerable for routine diagnostics of hereditary coagulation and platelet disorders according to the reimbursement catalogue of Germany's statutory health insurance system (EBM).

What does this paper add?

- We here present a new method to transfer mutation analyses of genes involved in congenital coagulation and platelet disorders from Sanger to NGS-based sequencing.
- The LR-PCR strategy covering the entire genomic region of a specific gene of interest raises the possibility to directly search for deep-intronic mutations in patients that had remained mutation-negative after sequencing of the coding regions.

Conflicts of Interest

The authors stated that they had no interests which might be perceived as posing a conflict or bias.

Acknowledgments

Study participants and their families are thanked for their participation. K. Hartwig is thanked for excellent technical assistance.

References

- 1 Peyvandi F, Palla R, Menegatti M, et al. Introduction. Rare bleeding disorders: general aspects of clinical features, diagnosis, and management. *Semin Thromb Hemost* 2009;35(04):349–355
- 2 Mertes F, Elsharawy A, Sauer S, et al. Targeted enrichment of genomic DNA regions for next-generation sequencing. *Brief Funct Genomics* 2011;10(06):374–386
- 3 Altmüller J, Budde BS, Nürnberg P. Enrichment of target sequences for next-generation sequencing applications in research and diagnostics. *Biol Chem* 2014;395(02):231–237
- 4 Jia H, Guo Y, Zhao W, et al. Long-range PCR in next-generation sequencing: comparison of six enzymes and evaluation on the MiSeq sequencer. *Sci Rep* 2014;4:5737
- 5 Hernan I, Borrás E, de Sousa Dias M, et al. Detection of genomic variations in BRCA1 and BRCA2 genes by long-range PCR and next-generation sequencing. *J Mol Diagn* 2012;14(03):286–293
- 6 Ozelik H, Shi X, Chang MC, et al. Long-range PCR and next-generation sequencing of BRCA1 and BRCA2 in breast cancer. *J Mol Diagn* 2012;14(05):467–475
- 7 Ehrenberg PK, Geretz A, Baldwin KM, et al. High-throughput multiplex HLA genotyping by next-generation sequencing using multi-locus individual tagging. *BMC Genomics* 2014;15:864
- 8 Pezeshkpoor B, Zimmer N, Marquardt N, et al. Deep intronic mutations' cause hemophilia A: application of next generation sequencing in patients without detectable mutation in F8 cDNA. *J Thromb Haemost* 2013;11(09):1679–1687
- 9 Bach JE, Wolf B, Oldenburg J, et al. Identification of deep intronic variants in 15 haemophilia A patients by next generation sequencing of the whole factor VIII gene. *Thromb Haemost* 2015;114(04):757–767
- 10 Metzker ML. Sequencing technologies – the next generation. *Nat Rev Genet* 2010;11(01):31–46
- 11 Blais J, Lavoie SB, Giroux S, et al. Risk of Misdiagnosis Due to Allele Dropout and False-Positive PCR Artifacts in Molecular Diagnostics: Analysis of 30,769 Genotypes. *J Mol Diagn* 2015;17(05):505–514
- 12 Landsverk ML, Douglas GV, Tang S, et al. Diagnostic approaches to apparent homozygosity. *Genet Med* 2012;14(10):877–882
- 13 Schlegel N, Binard S, Saposnik B. Apparent homozygosity for p. E1841K mutation in a patient with MYH9-related disorder: a misdiagnosis for an autosomal dominant disorder? *Eur J Haematol* 2012;88(04):365–366
- 14 Stuppia L, Antonucci I, Palka G, et al. Use of the MLPA assay in the molecular diagnosis of gene copy number alterations in human genetic diseases. *Int J Mol Sci* 2012;13(03):3245–3276
- 15 Lentaigne C, Freson C, Laffan MA, et al. Inherited platelet disorders: toward DNA-based diagnosis. *Blood* 2016;127(23):2814–2823
- 16 Simeoni I, Stephens JC, Hu F, et al. A high-throughput sequencing test for diagnosing inherited bleeding, thrombotic, and platelet disorders. *Blood* 2016;127(23):2791–2803
- 17 Stritt S, Nurden P, Turro E, et al. A gain-of-function variant in DIAPH1 causes dominant macrothrombocytopenia and hearing loss. *Blood* 2016;127(23):2903–2914
- 18 Tamary H, Fromovich Y, Shalmon L, et al. Ala244Val is a common, probably ancient mutation causing factor VII deficiency in Moroccan and Iranian Jews. *Thromb Haemost* 1996;76(03):283–291
- 19 Bernardi F, Castaman G, Redaelli R, et al. Topologically equivalent mutations causing dysfunctional coagulation factors VII (294Ala- > Val) and X (334Ser- > Pro). *Hum Mol Genet* 1994;3(07):1175–1177
- 20 Arbin AA, Bodkin D, Lopaciuk S, et al. Molecular analysis of Polish patients with factor VII deficiency. *Blood* 1994;84(07):2214–2220
- 21 Rath M, Najm J, Sirb H, et al. Large deletions play a minor but essential role in congenital coagulation factor VII and X deficiencies. *Hamostaseologie* 2015;35(Suppl 1):S36–S42
- 22 Millar DS, Elliston L, Deex P, et al. Molecular analysis of the genotype-phenotype relationship in factor X deficiency. *Hum Genet* 2000;106(02):249–257
- 23 Herrmann FH, Auerswald G, Ruiz-Saez A, et al. Factor X deficiency: clinical manifestation of 102 subjects from Europe and Latin America with mutations in the factor 10 gene. *Haemophilia* 2006;12(05):479–489
- 24 Hainmann I, Oldenburg J, Pavlova A, et al. Identification of a novel factor X deletion in combination with a missense mutation in the F10 gene – Genotype-phenotype correlation in a girl with severe factor X deficiency. *Hamostaseologie* 2009;29(02):184–186
- 25 Zadra G, Asselta R, Malcovati M, et al. Molecular genetic analysis of severe coagulation factor XI deficiency in six Italian patients. *Haematologica* 2004;89(11):1332–1340
- 26 Duncan EM, Casey CJ, Fenech MP, et al. Partial and severe factor XI deficiency in South Australia and the usefulness of factor XI mutation analysis for diagnosis. *Pathology* 2008;40(04):401–406

- 27 Hofferbert S, Muller J, Kosterling H, et al. A novel 5'-upstream mutation in the factor XII gene is associated with a TaqI restriction site in an Alu repeat in factor XII-deficient patients. *Hum Genet* 1996;97(06):838-841
- 28 Lombardi AM, Bortoletto E, Scarparo P, et al. Genetic study in patients with factor XII deficiency: a report of three new mutations exon 13 (Q501STOP), exon 14 (P547L) and -13C > T promoter region in three compound heterozygotes. *Blood Coagul Fibrinolysis* 2008;19(07):639-643
- 29 Schloesser M, Zeerleder S, Lutze G, et al. Mutations in the human factor XII gene. *Blood* 1997;90(10):3967-3977
- 30 Schloesser M, Hofferbert S, Bartz U, et al. The novel acceptor splice site mutation 11396(G- > A) in the factor XII gene causes a truncated transcript in cross-reacting material negative patients. *Hum Mol Genet* 1995;4(07):1235-1237
- 31 Del Vecchio GC, Giordani L, De Santis A, et al. Dyserythropoietic anemia and thrombocytopenia due to a novel mutation in GATA-1. *Acta Haematol* 2005;114(02):113-116
- 32 Kolluri R, Shehabeldin A, Peacocke M, et al. Identification of WASP mutations in patients with Wiskott-Aldrich syndrome and isolated thrombocytopenia reveals allelic heterogeneity at the WAS locus. *Hum Mol Genet* 1995;4(07):1119-1126