

CONTINUING MEDICAL EDUCATION

Management of Malignant Melanoma

Goo-Hyun Mun

Department of Plastic Surgery, Samsung Medical Center, Sungkyunkwan University School of Medicine, Seoul, Korea

Correspondence: Goo-Hyun Mun

Department of Plastic Surgery, Samsung Medical Center, Sungkyunkwan University School of Medicine, 81 Irwon-ro, Gangnam-gu, Seoul 135-710, Korea
Tel: +82-2-3410-2233, Fax: +82-2-3410-0036, E-mail: supramicro@gmail.com

The author thanks Bo Young Park, MD and So-Young Lim, MD, PhD for their contribution in preparing this article.

No potential conflict of interest relevant to this article was reported.

Received: 25 Jun 2012 • Revised: 11 Aug 2012 • Accepted: 12 Aug 2012

pISSN: 2234-6163 • eISSN: 2234-6171

<http://dx.doi.org/10.5999/aps.2012.39.5.565> • Arch Plast Surg 2012;39:565-574

Copyright © 2012 The Korean Society of Plastic and Reconstructive Surgeons

This is an Open Access article distributed under the terms of the Creative Commons Attribution Non-Commercial License (<http://creativecommons.org/licenses/by-nc/3.0/>) which permits unrestricted non-commercial use, distribution, and reproduction in any medium, provided the original work is properly cited.

ONCOLOGIC BACKGROUND

Incidence

Malignant melanoma is the leading cause of death in skin cancers. The incidence of melanoma is reported to vary throughout the world. It demonstrates a clear demographic disparity, and is a common malignancy in Western countries. It is reported at the highest rates in Auckland, New Zealand, with the age-standardized rate of 40.2/100,000 [1]. Other high rates have been reported in Australia, with a rate of 37.7/100,000 among males and 29.4/100,000 among females [2]. In the United States, 68,720 patients diagnosed with and 8,650 deaths from malignant melanoma were reported in 2009 [3]. In Asia, malignant melanoma is a rare disease and it is difficult to locate reports on the incidence. The age-adjusted rate for melanoma in 2006 was known to be 0.65/100,000 and 0.71/100,000 for males and 0.59/100,000 for females in Taiwan. To the best of our knowledge, there has been no multi-center study of malignant melanoma in Korea.

Etiology

UV exposure has been implicated as a major cause in the etiology of malignant melanoma [4]. However, acral lentiginous melanoma (ALM) and mucosal melanoma, which are more common in Asia, are generally not a result of exposure to ultraviolet irradiation. The etiology is yet to be determined. In an epidemiologic study of ALM from Australia, an increased risk was associated with penetrating injury of the feet or hands (relative

risk [RR], 5.0) and with heavy exposure to agrichemicals (RR, 3.6) [5]. Further etiologic studies to identify the risk factors are warranted.

MORPHOLOGIC SUBTYPE

The cardinal clinical feature of malignant melanoma is a pigmented lesion that changes visibly over a period of months to years. Any lesion noted to have changed in color, shape, size, or elevation warrants medical attention. Changes in lesions are highlighted in the 'ABCDE Guidelines' (Asymmetry, Border irregularity, Color change, Diameter > 6 mm, and Evolution [changing lesion] or Elevation; previously 'ABCD Criteria') [6]. The letter 'E' for evolution highlights the importance of changing lesion in appearance, size, shape, color, and symptoms. The major growth patterns of melanoma are lentigo maligna (LMN), superficial spreading (SMM), nodular melanoma (NM), and ALM [6] (Fig. 1). The most common subtype in Caucasians is SMM, which has a good prognosis. However, in Asians, ALM is the most common subtype, and it is diagnosed in the advanced stage.



Fig. 1.

(A) Nodular malignant melanoma. (B) Acral lentiginous malignant melanoma.

STAGING

Biopsy

Adequate biopsy is the first step for a definite diagnosis of malignant melanoma. Whether cutting into a tumor leads to a poor prognosis for the patient has been debated for decades. The *noli me tantere* ("do not touch me") strategy is considered appropriate. There is still concern that incomplete biopsy or punch biopsies will harm, although several studies have shown no negative influence on patient survival [7-12]. However, incisional biopsies do not seem to influence patient prognosis. Nevertheless, a complete excisional biopsy should generally be performed whenever possible. For a lesion clinically suspicious for malignant melanoma, one should perform an excisional biopsy with a clinically negative margin when possible to a full depth sufficient to ensure that the lesion is not transected [13-19]. It has been recommended that 1 to 3 mm margins are required to include the subclinical component of most atypical melanocytic lesions [20]. A number of biopsy methods have been known for a diagnosis of malignant melanoma including elliptical punch excision, or shave removal to a depth below the anticipated plane [17]. Shave biopsy may compromise pathologic diagnosis and make it difficult to measure the thickness. Clinically clear margins on excisional biopsy that encompass the entire width are preferred. However, incisional biopsy of the most atypical portion of the lesion is an acceptable technique in select circumstances, such as a facial or acral lentiginous lesions, or those with low clinical suspicion or very large lesions for which is impossible to obtain the whole lesion [14]. If an incisional biopsy specimen is inadequate for definite diagnosis of melanoma, a repeat biopsy should be performed [14].

In a suspicious nail lesion, the nail matrix should be sampled. Because of anatomical complexity of the nail area and the fact that melanoma arises in the nail matrix, suspicious nail lesions are best evaluated in the nail apparatus. For suspicious subungual lesions, the nail plate should be sufficiently removed to expose the underlying lesion and a biopsy should be performed with an adequate amount of atypical tissue.

2010 American Joint Committee on Cancer TNM definitions

A new American Joint Committee on Cancer (AJCC) cutaneous malignant melanoma staging system was published in 2010 [21]. This revised system was developed on the basis of a multivariate analysis of 30,946 patients with stage I, II, and III melanoma and 72,972 patients with stage IV melanoma. New findings include the following: 1) In patients with localized melanoma, tumor thickness, mitotic rate (mitoses/mm²), and ulceration were the

most powerful prognostic factors. 2) Mitotic rate replaces level of invasion as a primary criterion for T1b melanoma. 3) Among the 3,307 patients with regional metastases, 'the N components' were defined as the tumor burden, the ulceration of the primary lesions, and the number of metastatic nodes. 4) All patients who have microscopic nodal metastases, regardless of extent of the tumor burden, are classified as stage III. Micrometastases can be detected by immunohistochemistry. 5) On the basis of analysis of patients with distant metastases, the two dominant components were included in defining of the 'M component': Site of metastases and an elevated serum lactate dehydrogenase level.

TREATMENT

Surgery is the most important modality for malignant melanoma. Surgery means wide excision of the primary site, surgical management of clinically normal and abnormal lymph nodes, and surgery for distant metastases.

Wide excision of primary melanoma

The primary treatment modality for malignant melanoma is surgical excision (Fig. 2). After the diagnosis of melanoma has been histologically confirmed and the primary lesion has been adequately staged, a wider and deeper excision is needed. It is reported that melanoma cells may extend micro-satellite fashion from several millimeters to several centimeters from the clinically visible lesion.

Excision margins for melanoma have been a major subject of heated debate in recent years. Recommended surgical margins are based on a prospective randomized controlled study for survival and mortality (Table 1). The primary goal of wide excision of malignant melanoma is to achieve a histologically negative margin and prevent local recurrence. Surgical margin recommendations are based on studies in which margins were clini-



Fig. 2. Wide excision of malignant melanoma of the plantar area (black line, margin of tumor; red line, margin of wide excision).

cally measured around the primary tumor and including these basic concepts: 1) Wide excision is associated with a reduced risk of local recurrence; 2) there is no evidence in thin melanoma (< 1 mm) to confirm the improvement of the survival or local recurrence rate with excision margins exceeding 1 cm; 3) Excision with greater than 2-cm margins offers no benefit in the survival rate or local recurrence [22].

Melanoma of 1.0 mm or less (T1). Wide excision with a 1.0 cm margin is recommended. However, many surgeons consider 0.5 cm margins the standard of care for excision of melanoma *in situ*. For melanoma between the depth of 1.0 and 2.0 mm, 1 to 2 cm margins are adequate while 2 cm margins are adequate for lesions up to 4 mm thickness (Fig. 3). Although patients with lesions above 4 mm in thickness have a relatively high risk of local recurrence, there are few data to support the use of margins wider than 2 cm [23]. In desmoplastic melanoma, which shows locally aggressive behavior, a resection margin of 3 to 5 cm is needed [23].

Excision margins should be performed with known guidelines, but may involve amputation depending on the anatomical location of the lesion. For more complex areas, such as the

perineum, fingers and toes, or where the primary melanoma involves the anatomic areas not amenable to simple wide excision, a multidisciplinary treatment modality should be sought. Caution should be exercised in choosing the width of the margins of *in situ* melanomas as there are no known randomized studies.

Regarding excision depth, the recommended depth for invasive melanoma has always been to the level of the muscle fascia; no unequivocal evidence exists to support that this is necessary in every circumstance such as in anatomic locations with an a thick fat layer. Although no recommended depth of excision exists, the expert group recommends that, whenever possible, excision should be performed down to the muscle fascia, or at least deep adipose tissue [20,24].

Special areas

Scalp

Deciding on the surgical management of the scalp area is challenging because reconstructive options are limited. Even after free flap surgery reconstruction, an additional operation will be needed for resolving the alopecia. Some authors recommend that scalp melanoma should be excised including the ‘galea aponeurosis’ down through the pericranium. In this clinical situation, reconstruction is difficult because a skin graft is impossible and local flap usage is not desirable due to the risk of recurrence (Fig. 4). Also, malignant melanoma in the head and neck area shows a high mortality compared with other sites, when controlled for other factors [25].

Ear and face

Wide excision of the lesions in the face is limited to avoid injury or deformity of vital structures which is important for cosmetic results (Fig. 5). The ear is the site of primary malignant mela-

Table 1. Recommended excision margin in malignant melanoma	
Tumor thickness (mm)	Excision margin (cm)
<i>In situ</i>	0.5-1
0-1	1
1-2	1 or 2 ^{a)}
2-4	2
>4	2

^{a)}A 1 cm margin in anatomically restricted area; otherwise a 2 cm margin is preferable.



Fig. 3. Wide excision with a 2 cm margin and reconstruction with a thracodorsal artery perforator flap.



Fig. 4. Male 54-year-old, 8 mm invasion, T4aN0M0, Stage IIIB. Wide excision and skin grafting was performed.



Fig. 5. Female 87-year-old, 5 mm invasion, T4bN0M0, Stage IIc. Wide excision with a 2 cm margin and coverage with a local flap and split-thickness skin graft were performed.

noma in 7% to 20% of cases of head and neck melanoma [26]. Depending on the lesion in the ear, in most cases, it is best treated with wedge resection. When the excision has been performed with an initially narrower margin, the surgeon should obtain a negative resection margin. The excision depth should be down to the perichondrium and include the cartilage. Partial or total auriculectomy should be performed in only recurrent or extensive disease. Lymphatic drainage of the ear is to flow to the parotid basin and the superficial parotidectomy and anterior neck dissections are indicated in positive sentinel lymph nodes. The drainage is occasionally into the posterior neck, and level V lymph node dissection should be indicated.

Digit

Excision of melanoma of the toe or finger is controversial. The traditional method of treatment is amputation of the involved digit. The thumb is the most commonly affected digit in the hand, and loss of its function can be devastating. In primary lesions of the subungual or distal phalanx, the digit should preferentially be amputated at the level proximal to the distal interphalangeal (DIP) joint to preserve as much of the length of the digit as possible (Fig. 6). Kozlow and Rees [27] insisted that superficial lesions (below 1 mm) could be treated with wide excision. Only in invasive lesions (greater than 1 mm), is amputation of the digit required at one joint proximal to the lesion. For the index finger, ray amputation should be preferred considering the improved functional ability in pinching.

Recent studies have shown that more distal levels of amputation do not compromise the survival or recurrence rate [28]. Unless the bone is directly involved, total amputation of a finger or ray amputation is not mandated for proximal finger lesions.



Fig. 6. Male 76-year-old, acral lentiginous malignant melanoma with amputation just proximal to the distal interphalangeal joint.

Also, the digit-sparing approach shows good results [28]. Adequate soft tissue excision with reconstruction should be performed to prevent functional impairment.

Sentinel lymph node biopsy and lymphadectomy

The initial site of metastasis in melanoma is via the lymphatics in the majority of cases [29]. In general, nodal metastases in melanoma happen in an ordered manner. Involvement of the sentinel lymph node (SLN) occurs first, then the more distal lymph node (LN) is involved. The incidence of skip metastasis (cases of negative SLN with positive involvement of non-sentinel LN) is < 5% [30,31]. Lymphatic mapping using lymphoscintigraphy and intraoperative injection of radioisotope and/or blue dye is used to identify the lymph node immediately flown from the primary lesion [30,32,33]. Histologic examination of the sentinel lymph node is known to be the most important prognostic indicator for disease-specific survival of patients with melanoma greater than 1 mm in thickness (T2) [34-36]. The overall rate of SLN positivity among patients with intermediate depth melanoma is approximately 15% to 20%, and it significantly decreases in melanoma with less than a 1 mm thickness [37-39]. Sentinel lymph node biopsy should be considered in patients with melanoma > 1 mm in thickness (T2, 3, and 4), and it is not recommended for patients with melanoma *in situ* or T1a lesions. In patients with T1b melanoma of 0.76 to 1.00 mm thickness, sentinel lymph node biopsy should be discussed; in T1b melanoma, with tumor thickness < 0.75 mm, sentinel lymph node biopsy should not be considered, unless other adverse parameters in addition to ulceration or increased mitotic rate are present, such as angiolymphatic invasion, positive deep margin, or young age [20]. Some authors recommend sentinel lymph

**Fig. 7.**

Female 53-year-old, acral lentiginous type malignant melanoma of the foot with distant metastasis to the right hand dorsum. Wide excision of both areas and coverage with a split-thickness skin graft (foot) and thoracodorsal artery perforator free flap to the hand were performed.

node biopsy for most patients with melanomas >0.76 mm and increased mitotic rate [40].

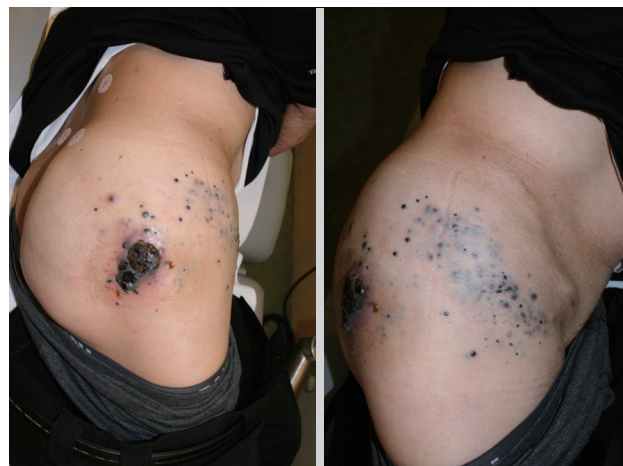
SPECIAL CONSIDERATION

Surgery in advanced malignant melanoma

Surgical excision of metastatic lesions can increase the survival rate in selected patients. The median survival for a metastatic melanoma in one site is 7 months, for a patient with disease at 2 sites is 4 months, and when 3 sites are involved, the median survival is 2 months. The numbers of metastases is the most significant factor predicting survival, and the location of metastases is also important [41].

The prognosis of AJCC stage IV melanoma is known to be less than 10% in 5 years [42] and a multimodal treatment method including chemotherapy, radiation therapy, and limb-infusion therapy is usually offered. However, surgery is the most powerful modality for palliation and prolonging life. Decision making regarding surgery of advanced lesions should take into consideration multiple factors including the number of metastases, rate of growth, types of and responses to previous treatment, and the age, medical condition, and desires of the patient [43].

Surgery should be chosen when resection is possible in a case

**Fig. 8.**

Multiple in-transit metastases of primary malignant melanoma in the lateral buttock.

of a lesion that is clinically isolated, and especially in skin and soft tissue lesions, complete resection with an adequate resection margin should be performed (Fig. 7). Multiple resections also are possible. However, cure is usually not a realistic aim, and treatment must reflect a carefully considered judgment concerning attempts to improve or preserve the quality of life.

In-transit metastasis

In-transit metastasis means the clinical manifestation of small tumor emboli trapped within the dermal and subdermal lymphatics between the site of the primary lesion and regional lymph node drainage basin (Fig. 8) [44]. The choice of therapy depends on the number of lesions, their anatomic location, their depth and size, and the presence or absence of extraregional disease. Their treatment options are classified into local, regional, and systemic therapy [20]. Surgical excision is appropriate as an initial treatment, and it should be performed until the negative margin (Fig. 9). Some authors recommend the wide excision with a 2 cm margin [24]. However, surgical excision alone often fails to control regional disease. Dong et al. [45] reported that the patients who showed the recurrences after wide excision developed the locoregional recurrences were seen in 55% of patients by 2 years and in 82% by 5 years. Also, intralesional injection of Bacillus Calmette–Guérin (BCG), dinitrochlorobenzene, or interferon has been reported [46]. In regional therapy, regional infusion or perfusion chemotherapy has been performed. However, in patients with recurrent in-transit metastasis who are not candidates for either local or regional therapy, systemic therapy such as chemotherapy or immunotherapy should be considered [47]. Most patients who show ‘in-transit metastasis’ will die of

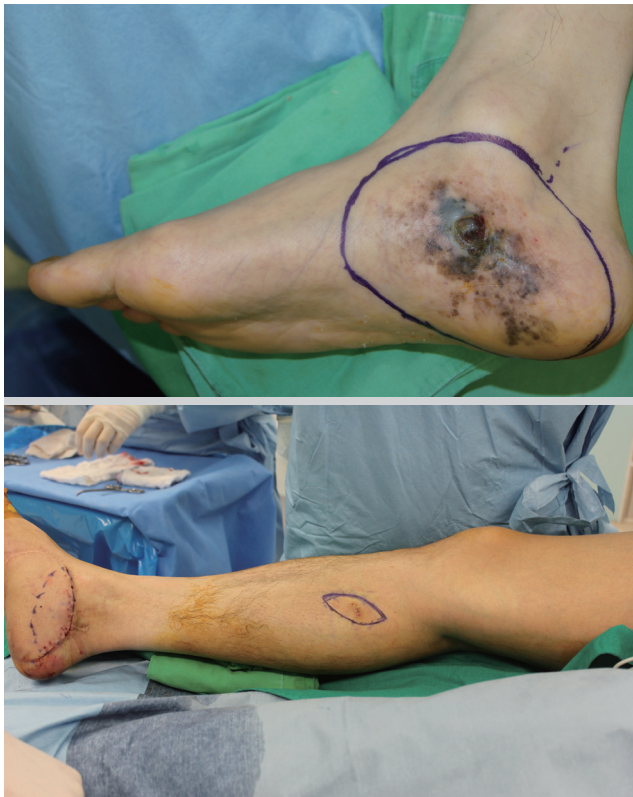


Fig. 9. In-transit metastases to the calf region in primary malignant melanoma of the right foot.

their disease. The factor most predictive of a poor outcome was revealed to be the presence of subcutaneous metastasis (as opposed to dermal-only metastasis) [48]. Also, the most important predictor of survival is the type of recurrence, with patients of distant metastasis having a 5-year survival of 10% [49].

Local recurrent disease

Local recurrence means a regrowth of melanoma within 2 cm of the primary surgical excision scar [50]. Most recurrences occur in the first 2 years and greater tumor thickness is associated with an increased risk of local recurrence [51]. Also, incidence of local recurrence increases with the presence of ulceration and location of the head, neck, or distal extremity. Recurrence after 10 years is infrequent (below 3%) [52]. Median time intervals and ranges between the initial visit and diagnosis of recurrences are reported according to the AJCC staging. Stage 1 had a median recurrence of 22 months (range, 2.0 to 60.5 months) and median recurrence of stage 2 is 13.2 months (range, 2.0 to 71.0 months). In stage 3, median recurrence is known to be 10.6 months (range, 2.3 to 53.8 months). Local recurrence is closely related to high mortality. Surgeons should concentrate their efforts on excising enough tissue for preventing repeated recurrence. Surgery is also the mainstay of treatment (Fig. 10). Although a 5-cm margin was once recommended, recent clinical trials have demonstrated that narrower margins lead to equivalent local control [53]. In the absence of significant data, some authors recommend excision using approximately 1 cm margins. However, few data exist about appropriate surgical margins because follow-up is quite short in these patient groups. After the surgery, high dose interferon alpha 2b is sometimes considered.

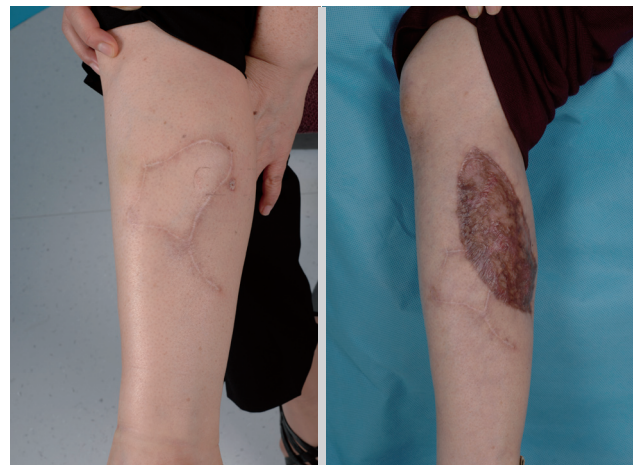


Fig. 10. Female 62-year-old, recurrence 14 months after wide excision and local flap coverage. Wide excision of the recurrent lesion and split-thickness skin graft were performed.

Children and young people

Melanoma accounts for 1% to 3% of older childhood malignancies [54]. The incidence of melanoma in childhood is strongly related to age and sex. Melanoma is exceedingly rare in children younger than 10 years [55]. A sharp increase occurs in puberty and is more pronounced in girls. In patients diagnosed with melanoma, approximately 50% have regional disease after sentinel lymph node biopsy or radiologic examination [54]. In pediatric patients, amelanotic melanoma is shown more frequently, which delays definite treatment. Unlike the adult population, it is unclear whether a negative sentinel lymph node biopsy is a prognostic indicator for survival [56]. Sentinel lymph node positivity rates are reported to be higher in children than adults (44% vs. 23%) [57]. Disease-free survival and overall survival seem to be similar to the rates for melanoma of adults, and sentinel lymph node biopsy has been shown to be safe [54].

For melanoma in childhood, as in adults, surgery is the primary modality of treatment. Wide local excision is recommended to be practiced with the same margin guidelines as those for adults (Fig. 11). Also, adjuvant therapy such as interferon alpha 2b is more tolerable in children than adults [58]. However, melanoma in childhood is very rare and limited data exist for evaluat-

ing the outcomes.

REFERENCES

1. Sneyd M, Cox B. The control of melanoma in New Zealand. *N Z Med J* 2006;119:U2169.
2. Parkin DM, Bray F, Ferlay J, et al. Global cancer statistics, 2002. *CA Cancer J Clin* 2005;55:74-108.
3. Jemal A, Siegel R, Ward E, et al. Cancer statistics, 2009. *CA Cancer J Clin* 2009;59:225-49.
4. Lea CS, Scotto JA, Buffler PA, et al. Ambient UVB and melanoma risk in the United States: a case-control analysis. *Ann Epidemiol* 2007;17:447-53.
5. Green A, McCredie M, MacKie R, et al. A case-control study of melanomas of the soles and palms (Australia and Scotland). *Cancer Causes Control* 1999;10:21-5.
6. Netscher DT, Leong M, Orenge I, et al. Cutaneous malignancies: melanoma and nonmelanoma types. *Plast Reconstr Surg* 2011;127:37e-56e.
7. Lederman JS, Sober AJ. Does biopsy type influence survival in clinical stage I cutaneous melanoma? *J Am Acad Dermatol* 1985;13:983-7.
8. Martin RC 2nd, Scoggins CR, Ross MI, et al. Is incisional biopsy of melanoma harmful? *Am J Surg* 2005;190:913-7.
9. Bong JL, Herd RM, Hunter JA. Incisional biopsy and melanoma prognosis. *J Am Acad Dermatol* 2002;46:690-4.
10. Lees VC, Briggs JC. Effect of initial biopsy procedure on prognosis in Stage 1 invasive cutaneous malignant melanoma: review of 1,086 patients. *Br J Surg* 1991;78:1108-10.
11. Griffiths RW, Briggs JC. Biopsy procedures, primary wide excisional surgery and long term prognosis in primary clinical stage I invasive cutaneous malignant melanoma. *Ann R Coll Surg Engl* 1986;68:58.
12. Molenkamp BG, Sluijter BJ, Oosterhof B, et al. Non-radical diagnostic biopsies do not negatively influence melanoma patient survival. *Ann Surg Oncol* 2007;14:1424-30.
13. Stell VH, Norton HJ, Smith KS, et al. Method of biopsy and incidence of positive margins in primary melanoma. *Ann Surg Oncol* 2007;14:893-8.
14. Karimipour DJ, Schwartz JL, Wang TS, et al. Microstaging accuracy after subtotal incisional biopsy of cutaneous melanoma. *J Am Acad Dermatol* 2005;52:798-802.
15. Austin JR, Byers RM, Brown WD, et al. Influence of biopsy on the prognosis of cutaneous melanoma of the head and neck. *Head Neck* 1996;18:107-17.
16. Ng JC, Swain S, Dowling JP, et al. The impact of partial biopsy on histopathologic diagnosis of cutaneous melanoma: experience of an Australian tertiary referral service. *Arch*



Fig. 11.

Male 12-year-old, amelanotic melanoma, depth of invasion 8 mm with sentinel lymph node (+), wide excision with 2 cm margin and closure.

- Dermatol 2010;146:234-9.
17. Ng PC, Barzilai DA, Ismail SA, et al. Evaluating invasive cutaneous melanoma: is the initial biopsy representative of the final depth? *J Am Acad Dermatol* 2003;48:420-4.
 18. Pflugfelder A, Weide B, Eigentler TK, et al. Incisional biopsy and melanoma prognosis: Facts and controversies. *Clin Dermatol* 2010;28:316-8.
 19. Lorusso GD, Sarma DP, Sarwar SF. Punch biopsies of melanoma: a diagnostic peril. *Dermatol Online J* 2005;11:7.
 20. Bichakjian CK, Halpern AC, Johnson TM, et al. Guidelines of care for the management of primary cutaneous melanoma. American Academy of Dermatology. *J Am Acad Dermatol* 2011;65:1032-47.
 21. Balch CM, Gershenwald JE, Soong SJ, et al. Final version of 2009 AJCC melanoma staging and classification. *J Clin Oncol* 2009;27:6199-206.
 22. Lens MB, Nathan P, Bataille V. Excision margins for primary cutaneous melanoma: updated pooled analysis of randomized controlled trials. *Arch Surg* 2007;142:885-91.
 23. Chang JW. Cutaneous melanoma: Taiwan experience and literature review. *Chang Gung Med J* 2010;33:602-12.
 24. Wright F, Spithoff K, Easson A, et al. Primary excision margins and sentinel lymph node biopsy in clinically node-negative melanoma of the trunk or extremities. *Clin Oncol (R Coll Radiol)* 2011;23:572-8.
 25. Parrett BM, Kashani-Sabet M, Singer MI, et al. Long-term prognosis and significance of the sentinel lymph node in head and neck melanoma. *Otolaryngol Head Neck Surg* 2012 Apr 24 [Epub]. <http://dx.doi.org/10.1177/0194599812444268>.
 26. Jahn V, Breuninger H, Garbe C, et al. Melanoma of the ear: prognostic factors and surgical strategies. *Br J Dermatol* 2006;154:310-8.
 27. Kozlow JH, Rees RS. Surgical management of primary disease. *Clin Plast Surg* 2010;37:65-71.
 28. Wagner A, Garrido I, Ferron G, et al. Subungual melanoma: for a conservative approach on the thumb scale. *Ann Plast Surg* 2007;59:344-8.
 29. Morton DL, Wen DR, Wong JH, et al. Technical details of intraoperative lymphatic mapping for early stage melanoma. *Arch Surg* 1992;127:392-9.
 30. Morton DL, Thompson JF, Essner R, et al. Validation of the accuracy of intraoperative lymphatic mapping and sentinel lymphadenectomy for early-stage melanoma: a multicenter trial. Multicenter Selective Lymphadenectomy Trial Group. *Ann Surg* 1999;230:453-63.
 31. Reintgen D, Cruse CW, Wells K, et al. The orderly progression of melanoma nodal metastases. *Ann Surg* 1994;220:759-67.
 32. Mattsson J, Bergkvist L, Abdiu A, et al. Sentinel node biopsy in malignant melanoma: Swedish experiences 1997-2005. *Acta Oncol* 2008;47:1519-25.
 33. Rossi CR, De Salvo GL, Trifiro G, et al. The impact of lymphoscintigraphy technique on the outcome of sentinel node biopsy in 1,313 patients with cutaneous melanoma: an Italian Multicentric Study (SOLISM-IMI). *J Nucl Med* 2006;47:234-41.
 34. Twomey P. Sentinel node biopsy for early-stage melanoma: accuracy and morbidity in MSLT-1, an international multicenter trial. *Ann Surg* 2007;245:156-7.
 35. Gershenwald JE, Mansfield PF, Lee JE, et al. Role for lymphatic mapping and sentinel lymph node biopsy in patients with thick (≥ 4 mm) primary melanoma. *Ann Surg Oncol* 2000;7:160-5.
 36. Ferrone CR, Panageas KS, Busam K, et al. Multivariate prognostic model for patients with thick cutaneous melanoma: importance of sentinel lymph node status. *Ann Surg Oncol* 2002;9:637-45.
 37. Bleicher RJ, Essner R, Foshag LJ, et al. Role of sentinel lymphadenectomy in thin invasive cutaneous melanomas. *J Clin Oncol* 2003;21:1326-31.
 38. Warycha MA, Zakrzewski J, Ni Q, et al. Meta-analysis of sentinel lymph node positivity in thin melanoma (≤ 1 mm). *Cancer* 2009;115:869-79.
 39. Wright BE, Scheri RP, Ye X, et al. Importance of sentinel lymph node biopsy in patients with thin melanoma. *Arch Surg* 2008;143:892-9.
 40. Phan GQ, Messina JL, Sondak VK, et al. Sentinel lymph node biopsy for melanoma: indications and rationale. *Cancer Control* 2009;16:234-9.
 41. Tagawa ST, Cheung E, Banta W, et al. Survival analysis after resection of metastatic disease followed by peptide vaccines in patients with Stage IV melanoma. *Cancer* 2006;106:1353-7.
 42. Balch CM, Soong SJ, Gershenwald JE, et al. Prognostic factors analysis of 17,600 melanoma patients: validation of the American Joint Committee on Cancer melanoma staging system. *J Clin Oncol* 2001;19:3622-34.
 43. Lui P, Cashin R, Machado M, et al. Treatments for metastatic melanoma: synthesis of evidence from randomized trials. *Cancer Treat Rev* 2007;33:665-80.
 44. Testori A, Rutkowski P, Marsden J, et al. Surgery and radiotherapy in the treatment of cutaneous melanoma. *Ann Oncol* 2009;20 Suppl 6:vi22-9.
 45. Dong XD, Tyler D, Johnson JL, et al. Analysis of prognosis and disease progression after local recurrence of melanoma. *Cancer* 2000;88:1063-71.

46. Storm FK, Sparks FC, Morton DL. Treatment for melanoma of the lower extremity with intralesional injection of bacille Calmette Guerin and hyperthermic perfusion. *Surg Gynecol Obstet* 1979;149:17-21.
47. Testori A, Richards J, Whitman E, et al. Phase III comparison of vitespen, an autologous tumor-derived heat shock protein gp96 peptide complex vaccine, with physician's choice of treatment for stage IV melanoma: the C-100-21 Study Group. *J Clin Oncol* 2008;26:955-62.
48. Sutherland CM, Mather FJ, Krementz ET. Factors influencing the survival of patients with regional melanoma of the extremity treated by perfusion. *Surg Gynecol Obstet* 1987;164:111-8.
49. Francken AB, Accortt NA, Shaw HM, et al. Prognosis and determinants of outcome following locoregional or distant recurrence in patients with cutaneous melanoma. *Ann Surg Oncol* 2008;15:1476-84.
50. Balch CM, Urist MM, Karakousis CP, et al. Efficacy of 2-cm surgical margins for intermediate-thickness melanomas (1 to 4 mm). Results of a multi-institutional randomized surgical trial. *Ann Surg* 1993;218:262-7.
51. Karakousis CP, Balch CM, Urist MM, et al. Local recurrence in malignant melanoma: long-term results of the multiinstitutional randomized surgical trial. *Ann Surg Oncol* 1996;3:446-52.
52. Mooney MM, Mettlin C, Michalek AM, et al. Life-long screening of patients with intermediate-thickness cutaneous melanoma for asymptomatic pulmonary recurrences: a cost-effectiveness analysis. *Cancer* 1997;80:1052-64.
53. Cohn-Cedermark G, Rutqvist LE, Andersson R, et al. Long term results of a randomized study by the Swedish Melanoma Study Group on 2-cm versus 5-cm resection margins for patients with cutaneous melanoma with a tumor thickness of 0.8-2.0 mm. *Cancer* 2000;89:1495-501.
54. Gow KW, Rapkin LB, Olson TA, et al. Sentinel lymph node biopsy in the pediatric population. *J Pediatr Surg* 2008;43:2193-8.
55. Strouse JJ, Fears TR, Tucker MA, et al. Pediatric melanoma: risk factor and survival analysis of the surveillance, epidemiology and end results database. *J Clin Oncol* 2005;23:4735-41.
56. Raval MV, Bilimoria KY, Bentrem DJ, et al. Use of sentinel lymph node biopsy for melanoma in children and adolescents. *J Surg Oncol* 2010;102:634-9.
57. Melnik MK, Urdaneta LF, Al-Jurf AS, et al. Malignant melanoma in childhood and adolescence. *Am Surg* 1986;52:142-7.
58. Shah NC, Gerstle JT, Stuart M, et al. Use of sentinel lymph node biopsy and high-dose interferon in pediatric patients with high-risk melanoma: the Hospital for Sick Children experience. *J Pediatr Hematol Oncol* 2006;28:496-500.

■ Quiz ■

1. This is a photo of a 70-year-old female patient who was diagnosed with acral lentiginous type of malignant melanoma. In the histologic report, the invasion depth was revealed to be 0.5 mm without dermal invasion. Decide on the surgical treatment for this lesion. What is the recommended surgical method by current American Joint Committee on Cancer (AJCC) guidelines?



- 1) Wide excision with 0.5 cm margin without sentinel lymph node biopsy
 - 2) Wide excision with 0.5 cm margin with sentinel lymph node biopsy
 - 3) Wide excision with 1 cm margin with sentinel lymph node biopsy
 - 4) Wide excision with 1 cm margin with lymphadenectomy
 - 5) Wide excision with 2 cm margin with sentinel lymph node biopsy
2. This is a photo of a 50-year-old patient who was diagnosed with acral lentiginous type of malignant melanoma at the sub-ungual area of the index finger. In the histologic report, the invasion depth was revealed to be 4 mm. Decide on the type of amputation for this lesion. What is the recommended amputation level according to the AJCC guidelines?



- 1) Ray amputation
 - 2) Amputation proximal to the proximal interphalangeal (PIP) joint
 - 3) Amputation proximal to the distal interphalangeal (DIP) joint
 - 4) Functional surgery without bone excision
3. These are descriptions of the biopsy technique in malignant melanoma. Choose the most correct answer.
- 1) Punch biopsy is harmful to a patient's prognosis, so it should not be performed.
 - 2) Shave biopsy is preferred due to its simplicity.
 - 3) Excisional biopsy is recommended including 1 to 3 mm margins for the subclinical component of most atypical melanocytic lesions, when it is possible.
 - 4) In a suspicious nail lesion, a nail plate should not be removed due to the possibility of tumor seeding.
4. A 30-year-old male patient came to your clinic with a 4 cm melanocytic lesion in his foot. His histologic report showed acral lentiginous malignant melanoma with a 10 mm depth. In preoperative evaluation, resectable solitary lung metastasis is found. In this case, which is the most suitable plan for this primary lesion of the foot under current guidelines?
- 1) Chemotherapy
 - 2) Radiotherapy
 - 3) Wide excision
 - 4) Interferon therapy