



Fig. 5.
The left eye of the patient three months after the operation, after full recovery.

elevated intraocular pressure [3]. Although the enlargement of the cavernous sinus and extraocular muscle or dilation of the ophthalmic vein is suggestive of CCFs, the gold standard for the diagnosis of CCFs is cerebral angiography [5]. The goal of treatment is to occlude the fistula site by a range of possible methods. Conservative therapy, such as external manual compression of the ipsilateral cervical carotid artery and radiosurgical intervention, may be effective for CCFs with low blood flow [5]. However, endovascular embolization through transarterial or transvenous access using metallic coils, with or without liquid embolic agents, is the first line of treatment for CCFs with high blood flow [5]. Open surgical intervention should be performed in cases where endovascular treatment is not possible or is unsuccessful [5]. After successful occlusion of the fistula, symptoms such as conjunctival chemosis and proptosis generally improve within hours to days [1,3,5]. Cranial nerve palsies often resolve within several weeks [5]. The recovery of vision largely depends on the severity of the injury before intervention [5].

This case highlights the importance of the diagnosis and treatment of CCFs in patients with a facial bone fracture accompanying a basal skull fracture. Since serious sequelae, such as irreversible visual loss, can result from CCFs, the early detection of alarming signs and symptoms in patients with facial bone and basal skull fractures could prevent permanent disability and improve treatment outcomes. Therefore, we recommend that ocular examinations should be performed in patients with craniofacial injuries and symptoms suggestive of CCFs. Moreover, radiologic modalities for the diagnosis and treatment of CCFs, such as CT scans and cerebral angiography, should be considered.

References

1. Miller NR, Monsein LH, Debrun GM, et al. Treatment of carotid-cavernous sinus fistulas using a superior ophthalmic vein approach. *J Neurosurg* 1995;83:838-42.
2. Miller NR. Carotid-cavernous sinus fistulas. In: Miller NR, Walsh FB, editors. *Walsh and Hoyt's Clinical neuro-ophthalmology*. Vol. 2. Baltimore; London: William & Wilkins; 1985. p.2263-95.
3. Nocini P, Lo Muzio L, Cortelazzi R, et al. Cavernous sinus-carotid fistula: a complication of maxillofacial injury. *Int J Oral Maxillofac Surg* 1995;24:276-8.
4. Cantini Ardila JE, Mendoza MA, Ortega VG. Sphenoid sinus and sphenoid bone fractures in patients with craniomaxillofacial trauma. *Craniomaxillofac Trauma Reconstr* 2013;6:179-86.
5. Ellis JA, Goldstein H, Connolly ES Jr, et al. Carotid-cavernous fistulas. *Neurosurg Focus* 2012;32:E9.

Giant Fibroadenoma in the Axilla: A Common Entity of Uncommon Size in a Rare Location

Bommie Florence Seo, Sang Wook Park,
Deuk Young Oh

Department of Plastic and Reconstructive Surgery, College of Medicine, The Catholic University of Korea, Seoul, Korea

Correspondence: Deuk Young Oh
Department of Plastic and Reconstructive Surgery, College of Medicine, The Catholic University of Korea, 222 Banpo-daero, Seocho-gu, Seoul 06591, Korea
Tel.: +82-2-2258-2842, Fax: +82-2-594-7230
E-mail: ohdeuk1234@hanmail.net

No potential conflict of interest relevant to this article was reported.

Received: 7 Jan 2015 • Revised: 10 Feb 2015 • Accepted: 10 Feb 2015
pISSN: 2234-6163 • eISSN: 2234-6171
<http://dx.doi.org/10.5999/aps.2015.42.6.793> • Arch Plast Surg 2015;42:793-795

Copyright © 2015 The Korean Society of Plastic and Reconstructive Surgeons
This is an Open Access article distributed under the terms of the Creative Commons Attribution Non-Commercial License (<http://creativecommons.org/licenses/by-nc/3.0/>) which permits unrestricted non-commercial use, distribution, and reproduction in any medium, provided the original work is properly cited.

A 20-year-old patient presented at our department with a slow-growing mass spanning from her right axilla to the medial upper arm. She had first noted the asymptomatic mass 10 months previously. Physical examination revealed a firm but relatively mobile



Fig. 1.

Preoperative and intraoperative findings. (A) The bulging, palpable mass spanning from the right axilla to the upper portion of the arm is seen preoperatively. (B) A well-encapsulated, pink, rubbery, and lobulated mass was found.

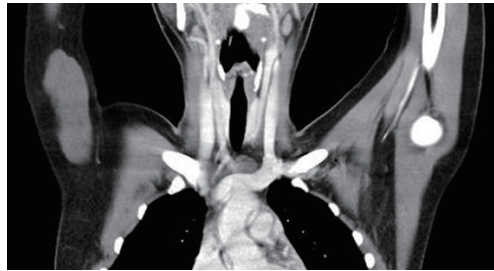


Fig. 2.

Computed tomography findings of a lobulated mass measuring 8.5 cm × 4.0 cm × 2.1 cm with intermediate density in the subcutaneous layer of the right upper medial arm and the axilla.

mass measuring 8 cm × 2 cm in the right upper medial arm. The mass was painless and nontender, with no fluctuation. No neurological signs and no infection signs with respect to the right arm were observed (Fig. 1). Computed tomography showed a lobulated mass measuring 8.5 cm × 4.0 cm × 2.1 cm with intermediate density in the subcutaneous layer of the right axilla and the upper medial arm (Fig. 2). Under the impression of a soft-tissue tumor of nerve origin, an excisional biopsy was performed through an axillary incision. A well-encapsulated, lobulated, pink, rubbery mass was found in the deep subcutaneous fat layer and was excised from the surrounding tissue (Fig. 3). Histopathologically, a biphasic pattern of epithelial and stromal proliferation was noted. The ductal epithelium was composed of an inner cuboidal/columnar epithelium and an outer myoepithelial layer. The fibrous stromal tissue showed an intracanalicular growth pattern, corresponding to the diagnosis of fibroadenoma (Fig. 3). The patient underwent sonography evaluation for any lesions in both breasts with negative findings.

Fibroadenoma is a benign, fibroepithelial tumor of

the breast. While a vast majority of these tumors have been found in females, rare occurrences have been reported in males [1]. Due to their benign nature, some have thought that these lesions are not neoplasms but hyperplastic lesions. However, recent studies observing the transformation of breast fibroadenoma to malignancies have reported differently. Pacchiarotti et al. [2] reported the transformation of fibroadenoma into high-grade malignant tumors after ovarian stimulation in *in vitro* fertilization patients.

Specific variants of fibroadenoma include giant fibroadenoma, juvenile fibroadenoma, multiple fibroadenomas, and fibroadenoma of pregnancy and lactation. Giant fibroadenomas have a diameter of more than 5 cm and/or weigh more than 500 g, as in this case. Multiple fibroadenomas are associated with a related family history or several cancer syndromes such as the Maffucci syndrome, Cowden syndrome, and Carney complex [3]. Juvenile fibroadenoma usually presents as a breast mass in patients between the age of 10 and 18 years. Jung et al. [4] reported a case found in a 13-month-old child, but such incidence is extremely rare. The incidence of breast lesions in the general adolescent population is low (2.2%), and a majority of these lesions are fibroadenomas.

Definitive diagnosis is done through histopathological examination. Ultrasonography may help distinguish between solid and cystic lesions of the breast, and fibroadenomas typically have a longer width than height, surrounded by an echogenic capsule. Fine-needle aspiration is not reliable in distinguishing a fibroadenoma from a phyllodes tumor. Core-needle biopsy has strong negative (93%) and positive (83%) predictive power, but only by

**Fig. 3.**

(A) The excised specimen measuring 11.5 cm × 5 cm. (B) Histological findings of both epithelial hyperplasia and stromal hypercellularity (H&E, × 100).

histopathological examination of the entire specimen can a definite diagnosis be made.

The pathophysiology of this entity has not been fully established. Hormonal influences have been suggested to be a factor, due to the increase in prevalence during puberty or pregnancy, or during the intake of oral contraceptives. Suggested hypotheses are an imbalance of estrogen levels or hypersensitivity of breast tissue to estrogen, resulting in mammary gland hyperplasia [5]. Thus, a vast majority of fibroadenomas are found in the breast. Although there have been rare reports of lesions found in the axilla, this is the first report of a fibroadenoma of this dimension solitarily occurring in the axilla [5]. In this report, we have included the relevant clinical, gross, and micrographic pathological images.

References

1. Gupta P, Foshee S, Garcia-Morales F, et al. Fibroadenoma in male breast: case report and literature review. *Breast Dis* 2011;33:45-8.
2. Pacchiarotti A, Frati P, Caserta D, et al. First case of transformation for breast fibroadenoma to high-grade malignant cystosarcoma in an in vitro fertilization patient. *Fertil Steril* 2011;96:1126-7.
3. Amin AL, Purdy AC, Mattingly JD, et al. Benign breast disease. *Surg Clin North Am* 2013;93:299-308.
4. Jung YS, Lee KJ, Yoon TI, et al. Juvenile fibroadenoma in 13-month-old female child. *J Paediatr Child Health* 2005;41:78-9.
5. Zhang RR, Bevan S, Sun P, et al. Unusual presentation of multiple fibroadenomas in bilateral breasts and axillary accessory breast. *Breast Cancer (Auckl)* 2012;6:95-9.

Superficial Subcutaneous Leiomyosarcoma on the Face of a Pediatric Patient

Byung Mi Lee¹, Seok Joo Kang¹, Seong Pin Jeon¹, Hook Sun¹, Bomi Kim²

Departments of ¹Plastic and Reconstructive Surgery and ²Pathology, Busan Paik Hospital, Inje University College of Medicine, Busan, Korea

Correspondence: Hook Sun

Department of Plastic and Reconstructive Surgery, Busan Paik Hospital, Inje University College of Medicine, 75 Bokji-ro, Busanjin-gu, Busan 47392, Korea
Tel: +82-51-890-6136, Fax: +82-51-894-7976, E-mail: sun443@naver.com

No potential conflict of interest relevant to this article was reported.

Received: 30 Apr 2015 • Revised: 26 May 2015 • Accepted: 29 May 2015
pISSN: 2234-6163 • eISSN: 2234-6171
<http://dx.doi.org/10.5999/aps.2015.42.6.795> • Arch Plast Surg 2015;42:795-798

Copyright © 2015 The Korean Society of Plastic and Reconstructive Surgeons
This is an Open Access article distributed under the terms of the Creative Commons Attribution Non-Commercial License (<http://creativecommons.org/licenses/by-nc/3.0/>) which permits unrestricted non-commercial use, distribution, and reproduction in any medium, provided the original work is properly cited.

Leiomyosarcomas (LMSs) are rare malignant tumors of the smooth muscles, and superficial LMS is a type of LMS that develops on the skin. Superficial LMS of the head is exceedingly rare and represents only 1%–5% of all superficial LMS cases [1].

LMSs are classified as cutaneous or subcutaneous depending on the primary site of origin. A primary cutaneous LMS derives from the erector muscles of the hair and sweat glands in the dermis. Subcutaneous LMS is considered to arise from the muscular coat of a vessel [2]. It mostly develops in people in the age group of 40–60 years and is twice more likely to occur in women than in men. The most common sites of LMS development are the legs